

BITIWEND Door Chime

BITIWEND Wireless Door Chime System User Manual

Brand: BITIWEND | Model: Door Chime

1. INTRODUCTION

The BITIWEND Wireless Door Chime System is designed to provide reliable alerts for door and window openings. This system is ideal for homes, offices, garages, and retail stores, ensuring you never miss a visitor or an unauthorized entry. With a long wireless range, multiple chime options, and adjustable volume levels, it offers a customizable and effective monitoring solution.

Key Features:

- **Extended Wireless Range:** Up to 600 feet (183 meters) in open areas.
- **Versatile Chime Options:** 58 selectable ringtones, including various melodies and alerts.
- **Adjustable Volume:** 5 levels, ranging from 0dB (mute) to 110dB.
- **Expandable System:** Supports multiple door/window sensors and receivers.
- **Memory Function:** Retains last-set volume and ringtone settings after power off.



Image: The BITIWEND Wireless Door Chime System, showing the main receiver unit and three contact sensors.

2. COMPONENTS

Please verify that all components are present in your package:

- 1 x Plug-in Receiver (Chime Unit)
- Door/Window Contact Sensors (Quantity may vary based on package)
- Mounting Hardware (Screws, double-sided adhesive tape)
- Small Screwdriver (for battery replacement)
- User Manual (This document)

3. SETUP INSTRUCTIONS

Follow these steps to set up your BITIWEND Wireless Door Chime System:

1. **Prepare the Sensor:** Pull out the plastic insulation strip from the battery compartment of each door sensor.
2. **Plug in the Receiver:** Plug the receiver unit into a standard electrical outlet in your desired location.
3. **Adjust Volume & Choose Ringtone:**

- Press the 'Volume' button on the receiver to cycle through 5 volume levels.
- Use the 'Up' and 'Down' buttons to select your preferred ringtone from the 58 available options.

4. Pair the Sensor:

- Press and hold both the 'Volume' and 'Down' buttons on the receiver simultaneously for a few seconds until the LED indicator flashes.
- Quickly separate the two parts of the door sensor (as if a door is opening) to trigger it. The receiver will chime, indicating successful pairing.

5. Install the Sensor:

- Clean the desired installation surface (door/window frame and the moving part).
- Attach the two sensor parts using the provided double-sided adhesive tape or screws. Ensure the two parts are aligned and the gap between them is no more than 0.4 inches (1 cm) when the door/window is closed.

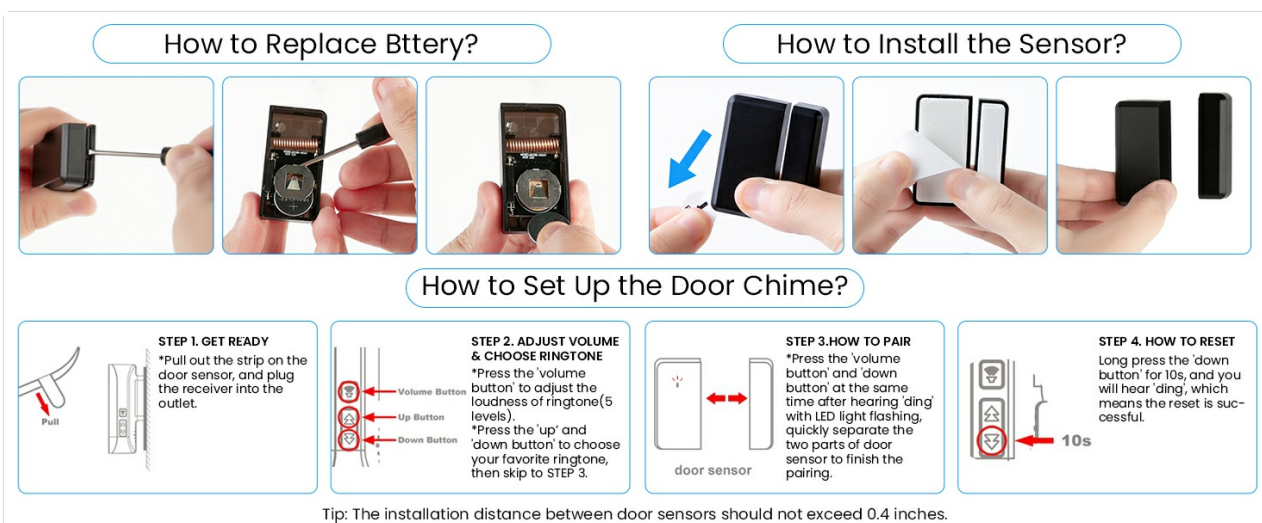


Image: Visual guide for setting up the door chime, from sensor preparation to pairing.

Your browser does not support the video tag.

Video: An official product video demonstrating the setup and basic functionality of the BITIWEND Door Chime.

4. OPERATING INSTRUCTIONS

Once set up, the BITIWEND Wireless Door Chime operates automatically. When a monitored door or window opens and the two sensor parts separate, the sensor sends a signal to the receiver, triggering the selected chime.

Adjusting Volume and Chimes:

- **Volume Control:** Press the 'Volume' button on the receiver to cycle through 5 distinct volume levels (0dB, 50dB, 70dB, 90dB, 110dB) to suit your environment.
- **Ringtone Selection:** Use the 'Up' and 'Down' buttons to browse and select from 58 different ringtones.



-  5 Volume Levels
-  17 Chimes Tones
-  41 Music Tones
-  58 Total Tones

Image: Illustration of the 5 volume levels and the variety of 58 chime tones available.

Memory Function:

The receiver is equipped with a memory function that saves your last-set volume and ringtone preferences. This ensures that your settings are retained even if the receiver is unplugged or experiences a power outage, eliminating the need for re-configuration.

Memory Function

The receiver has a memory function that records the last settings, including volume, ringtone, at the time of power off. Therefore, you don't have to worry about resetting when the receiver is suddenly turned off due to a power failure or other reasons.



Image: A visual representation of the memory function, highlighting its benefit.

Applications:

- **Home Security:** Monitor entry points like front doors, back doors, and windows to detect unauthorized access.
- **Child/Pet Safety:** Place sensors on doors leading to dangerous areas or exits to be alerted if children or pets open them.
- **Retail/Office Use:** Use as a welcome chime for customers entering a store or to monitor restricted areas in an office.



ULTRA-LONG WIRELESS RANGE

Door Chime Kit supports a range of connections up to 600 feet. You can use it on home, office, garage, store etc, never miss any visitors.



Image: The system's ultra-long wireless range demonstrated across different parts of a house.

5. MAINTENANCE

Battery Replacement (Sensor):

The door/window sensors are powered by a button cell battery. When the sensor's blue LED indicator no longer

flashes upon activation, or if the chime unit fails to respond to the sensor, it's time to replace the battery.

1. **Separate Sensor Parts:** Gently separate the two parts of the sensor.
2. **Open the Casing:** Use the provided small screwdriver to carefully pry open the sensor casing.
3. **Remove Battery Panel:** Take out the internal battery panel. Be careful not to touch the metal ring tube at the top or the black conduit raised on the side, as these are sensitive components.
4. **Replace Battery:** Carefully remove the old button cell battery. Insert a new CR2032 battery, ensuring the positive (+) side is facing up.
5. **Secure Battery Slot:** After removing the battery, gently press the metal tab of the battery slot to ensure a snug fit for the new battery and prevent loosening.
6. **Reassemble:** Place the battery panel back into its original position, then close the sensor casing by pressing it firmly until it clicks into place.



Image: Step-by-step visual guide for replacing the sensor battery.

Your browser does not support the video tag.

Video: An official product video demonstrating how to replace the battery of the sensor.

6. TROUBLESHOOTING

If you encounter issues with your BITIWEND Wireless Door Chime System, refer to the table below for common problems and their solutions:

Problem	Possible Cause	Solution
Chime unit does not sound when sensor is triggered.	Sensor battery is low or dead. Sensor is out of range. Sensor and receiver are not paired. Sensor parts are not aligned correctly.	Replace sensor battery. Move receiver closer to the sensor. Re-pair the sensor and receiver (refer to Setup section). Adjust sensor alignment; ensure gap is within 0.4 inches.

Problem	Possible Cause	Solution
Chime sounds intermittently or falsely.	Interference from other wireless devices. Sensor parts are too far apart or loose. Environmental factors (e.g., metal doors).	Relocate receiver or sensor away from interfering devices. Re-secure sensor parts; ensure proper alignment and gap. Note: Metal doors may reduce wireless range.
Receiver LED flashes but no sound.	Volume is set to 0dB (mute).	Press the 'Volume' button to increase the volume level.
Cannot change ringtone or volume.	Buttons are not responding.	Unplug the receiver, wait 10 seconds, then plug it back in. Try again.

7. SPECIFICATIONS

Specification	Detail
Brand	BITIWEND
Model Number	Door Chime
Power Source (Receiver)	AC Plug-in
Power Source (Sensor)	Battery Powered (Alkaline, CR2032)
Voltage	1.5 Volts (DC)
Wireless Range	Up to 600 feet (approx. 183 meters)
Chime Tones	58 selectable
Volume Levels	5 (0dB to 110dB)
Noise Level (Max)	110 dB
Mounting Type	Door Mount (Adhesive/Screws)
Sensor Technology	Contact Sensor
Color	Black
Item Weight	6.7 ounces (approx. 190 grams)
Package Dimensions	3.78 x 3.74 x 3.11 inches (approx. 9.6 x 9.5 x 7.9 cm)

8. WARRANTY AND SUPPORT

For product support, troubleshooting assistance beyond this manual, or warranty inquiries, please contact BITIWEND customer service directly. Refer to the product packaging or the official BITIWEND website for the most current contact information.

You may also find additional resources and FAQs on the BITIWEND store page on Amazon: [BITIWEND Store](#)