

Manuals+

[Q & A](#) | [Deep Search](#) | [Upload](#)

[manuals.plus](#) /

› [Colibri](#) /

› [Colibri Quasar Premium 2-in-1 Desk Cutter Instruction Manual \(Model CU700T5\)](#)

Colibri CU700T5

Colibri Quasar Premium 2-in-1 Desk Cutter Instruction Manual

Model: CU700T5



Image: Colibri Quasar Premium 2-in-1 Desk Cutter, Metallic Navy color, showcasing its unique pyramidal design.

INTRODUCTION

This manual provides instructions for the safe and effective use of your Colibri Quasar Premium 2-in-1 Desk Cutter. Designed for cigar enthusiasts, this device offers both V-cut and straight-cut options with precision and ease.

Key features include a dual cutting design, spring-loaded mechanism, sturdy all-metal construction with a non-slip base, and high-quality stainless steel blades.

SETUP

- Unboxing:** Carefully remove the Colibri Quasar Desk Cutter from its packaging. Inspect the unit for any signs of damage.
- Placement:** Place the cutter on a stable, flat surface. The integrated rubber gasket on the base ensures stability and protects your desktop.

OPERATING INSTRUCTIONS

The Colibri Quasar features a unique spring-loaded mechanism. To operate, gently press down on the top pyramidal section of the cutter. This action will smoothly raise the internal mechanism, exposing the cutting blades.

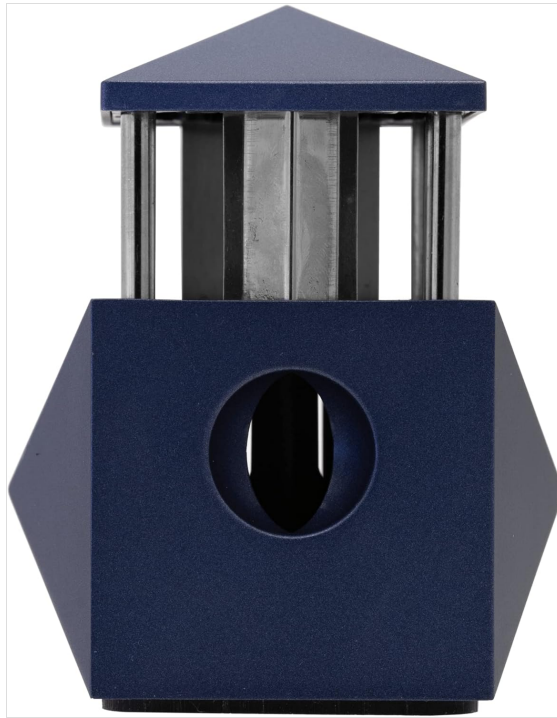


Image: The Colibri Quasar Desk Cutter with its V-cut blade exposed, ready for use. The top section is depressed, revealing the cutting mechanism.

Using the V-Cut

- Locate the V-cut opening on the side of the cutter.
- Insert the head of your cigar into the V-cut opening. The V-cut is designed for cigars up to a 60-ring gauge, providing a deep, precise wedge cut.
- Ensure the cigar is seated firmly against the back of the opening.
- Press down on the top of the cutter to engage the blade and make the cut.

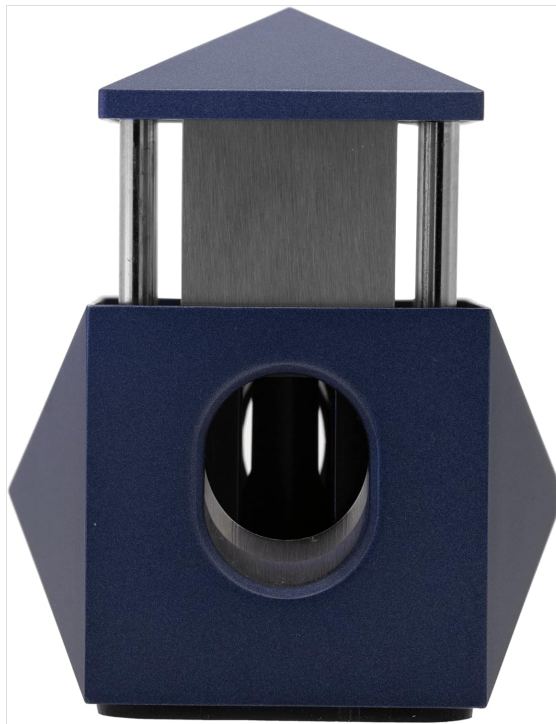


Image: The Colibri Quasar Desk Cutter with its straight-cut blade exposed, ready for use. The top section is depressed, revealing the cutting mechanism.

Using the Straight Cut

- Locate the straight-cut opening on the opposite side of the cutter.
- Insert the head of your cigar into the straight-cut opening. This cut is suitable for cigars up to a 70-ring gauge.
- Ensure the cigar is positioned to remove only the cap, avoiding damage to the cigar body.
- Press down on the top of the cutter to engage the blade and make the cut.

MAINTENANCE

Cleaning Clippings

The Colibri Quasar is designed with a twist-off cap underneath the base for easy removal of cigar clippings. Regularly empty the clippings chamber to prevent accumulation and ensure optimal performance.

1. Turn the cutter upside down.
2. Twist the cap counter-clockwise to unlock and remove it.
3. Discard accumulated cigar clippings.
4. Replace the cap and twist clockwise to secure it.

Blade Care

The stainless steel blades are designed for durability and sharpness. To maintain their performance, avoid cutting anything other than cigar caps. If necessary, gently wipe the blades with a dry, soft cloth to remove any residue. Do not use abrasive cleaners or immerse the unit in water.

TROUBLESHOOTING

- **Cutter feels stiff or blades do not fully retract/extend:** Ensure the clippings chamber is empty and clean. Accumulated debris can impede the mechanism. Refer to the "Cleaning Clippings" section.

- **Uneven cuts:** Ensure the cigar is inserted straight and firmly against the back of the cutting opening before pressing down. A quick, decisive press yields the best results.
- **Cigar cap gets stuck:** After cutting, sometimes the cap may remain in the cutting area. Gently push it out with a non-sharp object or your finger (with caution, avoiding blades) before the next cut. Regular cleaning helps prevent this.

SPECIFICATIONS

Feature	Detail
Model Number	CU700T5
Brand	Colibri
Material	Stainless Steel (Blades), All-metal body, Rubber (Handle/Base)
Color	Navy (as per current product)
Cutting Type	V-Cut, Straight Cut
V-Cut Capacity	Up to 60-ring gauge, 7mm deep
Straight Cut Capacity	Up to 70-ring gauge
Dimensions	4.02 x 3.86 x 3.82 inches (Package)
Weight	1.52 Pounds (Package)





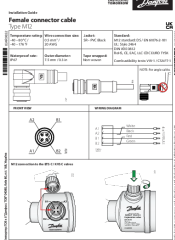

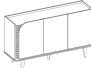

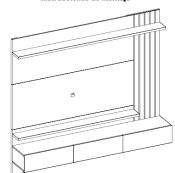

WARRANTY INFORMATION

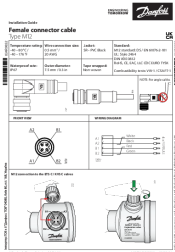
The Colibri Quasar Premium 2-in-1 Desk Cutter is backed by Colibri's international 2-year warranty. This warranty covers manufacturing defects and ensures lasting satisfaction. For warranty claims or detailed terms, please refer to the official Colibri website or contact customer support.

SUPPORT

For additional assistance, product information, or to explore other Colibri products, please visit the official Colibri store:

[Visit the Colibri Store on Amazon](#)

 <p>Invacare® Colibri</p> <p>® Invacare Mobility Scooter</p> 	<p>Invacare Colibri Mobility Scooter Maintenance and Service Manual</p> <p>This manual provides detailed maintenance, troubleshooting, and repair instructions for the Invacare Colibri mobility scooter, covering component replacement, safety guidelines, and diagnostic codes.</p>
 <p>Invacare® Colibri</p> <p>® Invacare Mobility Scooter</p> 	<p>Invacare Colibri Scooter Service Manual - Technical Guide</p> <p>Official service manual for the Invacare Colibri mobility scooter. Contains detailed technical instructions, safety guidelines, troubleshooting steps, and component replacement procedures for qualified technicians. Essential for maintaining the Invacare Colibri.</p>
 <p>Female connector cable Type M12</p> 	<p>Danfoss M12 Female Connector Cable Installation Guide</p> <p>Installation guide for the Danfoss M12 female connector cable, detailing specifications, wiring, and connection procedures for industrial applications.</p>
 <p>Manuel de montage Assembly Instructions Instrucciones de montaje</p> <p>Buffet Jurerê 1.541</p> 	<p>Colibri Buffet Jurerê 1.541 Assembly Instructions</p> <p>Comprehensive assembly guide for the Colibri Buffet Jurerê 1.541, detailing parts, tools, safety precautions, and step-by-step instructions for building the furniture.</p>
 <p>Manuel de montage Assembly Instructions Instrucciones de montaje</p> <p>Home Suspenso Juriti 1.8 1.644</p> 	<p>Colibri Home Suspenso Juriti 1.8 1.644 Assembly Instructions</p> <p>Comprehensive assembly guide for the Colibri Home Suspenso Juriti 1.8 1.644 TV stand. Includes safety precautions, a detailed parts list, step-by-step assembly instructions, and final dimensions.</p>



[Danfoss Female Connector Cable Type M12 Installation Guide](#)

Installation guide for the Danfoss Female Connector Cable Type M12, detailing specifications, front view, wiring diagram, and connection instructions for ETS C/KVS C valves.