

## Manuals+

[Q & A](#) | [Deep Search](#) | [Upload](#)

manuals.plus /

- › [Corsair](#) /
- › [Corsair K70 RGB TKL CHAMPION SERIES Gaming Keyboard User Manual](#)

## Corsair CH-911901A-NA

# User Manual: Corsair K70 RGB TKL CHAMPION SERIES Gaming Keyboard

Model: CH-911901A-NA

## 1. INTRODUCTION

---

This manual provides comprehensive instructions for the setup, operation, maintenance, and troubleshooting of your Corsair K70 RGB TKL CHAMPION SERIES Tenkeyless Optical-Mechanical Gaming Keyboard. Designed for competitive gaming, this keyboard features advanced technology and durable components to enhance your performance. Please read this manual thoroughly before using the product to ensure proper functionality and longevity.

## 2. PACKAGE CONTENTS

---

Verify that all items listed below are present in your product packaging. If any items are missing or damaged, please contact Corsair customer support.

- Corsair K70 RGB TKL CHAMPION SERIES Gaming Keyboard
- Detachable USB Type-C Cable (1.8m / 6ft)
- User Manual (this document)



Figure 2.1: Included items in the product box, featuring the Corsair K70 RGB TKL keyboard and its detachable USB-C cable.

### 3. PRODUCT OVERVIEW

The Corsair K70 RGB TKL is a high-performance tenkeyless gaming keyboard engineered for competitive play. It incorporates several key features designed for speed, durability, and customization.

#### Key Features:

- **CORSAIR OPX RGB Optical-Mechanical Keyswitches:** Provides hyper-fast input with a 1.0mm actuation distance and smooth linear travel, guaranteed for 150 million keystrokes.
- **CORSAIR AXON Hyper-Processing Technology:** Processes and transmits inputs up to 8x faster than conventional gaming keyboards with 8,000Hz hyper-polling and 4,000Hz key scanning.
- **PBT Double-Shot Keycaps:** Precision-molded keycaps with a standard bottom row layout, resisting wear, fading, and shine, with 1.5mm thickness for rigid stability.
- **Tournament Mode Switch:** Instantly disables macros and swaps to distraction-free static backlighting for competitive environments.
- **Detachable USB Type-C Cable:** For portability and easy setup.
- **Onboard Profile Storage:** Store up to 50 profiles directly on the keyboard.

- **Dedicated Media Keys & Aluminum Volume Roller:** Convenient control over media playback.
- **Full N-Key Rollover (NKRO) & 100% Anti-Ghosting:** Ensures every keypress is registered accurately.



Figure 3.1: Overview of the K70 RGB TKL keyboard's design and core technologies.

**POWERED BY AXON**

AXON Hyper-Processing Technology delivers inputs up to 8x faster.



**8,000Hz**  
Hyper-Polling

Up To  
**20-LAYER**  
Hardware Lighting Effects

Figure 3.2: Detachable USB Type-C cable connection and Tournament Switch location.

# LINEAR AND HYPER-FAST

Rapid input with just 1.0mm actuation distance and smooth linear travel for top-tier gaming performance.

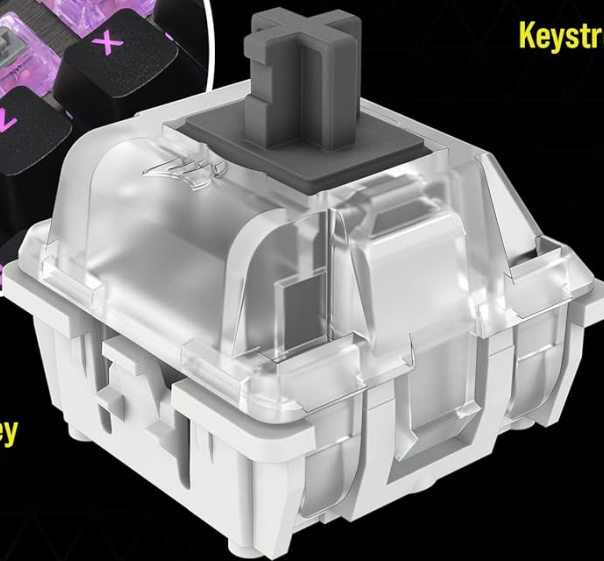


# 150 MILLION

Keystrokes Guaranteed



Programmable Per-Key  
RGB Backlighting



## CORSAIR OPX RGB Optical-Mechanical Keyswitches

Figure 3.3: Explanation of AXON Hyper-Processing Technology.

# PLAY HARDER

Take on the competition in style with a durable aluminum frame illuminated by fully programmable per-key RGB backlighting.



## PBT DOUBLE-SHOT KEYCAPS

Resist wear, fading, and shine, with 1.5mm thickness for rigid stability.

Figure 3.4: Details of the CORSAIR OPX RGB Optical-Mechanical Keyswitches.



Figure 3.5: PBT Double-Shot Keycaps for enhanced durability.

# TOURNAMENT READY

Flip the tournament switch to enable distraction-free static backlighting and prevent accidental macro activations.



Figure 3.6: Layout highlighting dedicated media keys and volume roller.

## 4. SETUP

Follow these steps to set up your Corsair K70 RGB TKL keyboard.

1. **Connect the USB Cable:** Insert the USB Type-C end of the detachable cable into the port on the back of the keyboard. Connect the USB Type-A end of the cable to an available USB 3.0 (or higher) port on your computer. For optimal performance, use a direct port on your motherboard.
2. **Initial Power On:** The keyboard will light up upon successful connection. Your operating system should automatically detect and install the necessary drivers.
3. **Install iCUE Software (Recommended):** For full customization of RGB lighting, macro programming, and performance settings, download and install the latest version of the Corsair iCUE software from the official Corsair website ([www.corsair.com/icue](http://www.corsair.com/icue)).
4. **Software Configuration:** Once iCUE is installed, launch the application. The software will detect your K70 RGB TKL keyboard, allowing you to customize profiles, lighting effects, key assignments, and more.



Figure 4.1: Keyboard connected and ready for use.

## 5. OPERATING INSTRUCTIONS

---

This section details the basic operation and special functions of your keyboard.

### 5.1. Basic Keyboard Functions

- **Typing:** Use the standard QWERTY layout for typing.
- **Function Keys (F1-F12):** Perform standard system functions. These can be remapped via iCUE.
- **Arrow Keys:** Navigate through menus and documents.
- **Modifier Keys:** Shift, Ctrl, Alt, Windows Key.

### 5.2. Special Functions

- **Media Controls:** Dedicated media keys (Play/Pause, Stop, Previous, Next) and an aluminum volume roller are located above the function keys for easy audio control.
- **Brightness Control:** Adjust the keyboard's RGB backlight brightness using the dedicated brightness key.
- **Windows Key Lock:** The dedicated Windows Key Lock button disables the Windows key to prevent accidental presses during gaming.
- **Profile Switching:** Use the dedicated profile switch button to cycle through onboard profiles configured in iCUE.
- **Tournament Switch:** Located on the back of the keyboard near the USB-C port. Flipping this switch activates Tournament Mode, which disables custom macros and sets the lighting to a static, distraction-free color. An indicator light will illuminate when Tournament Mode is active.

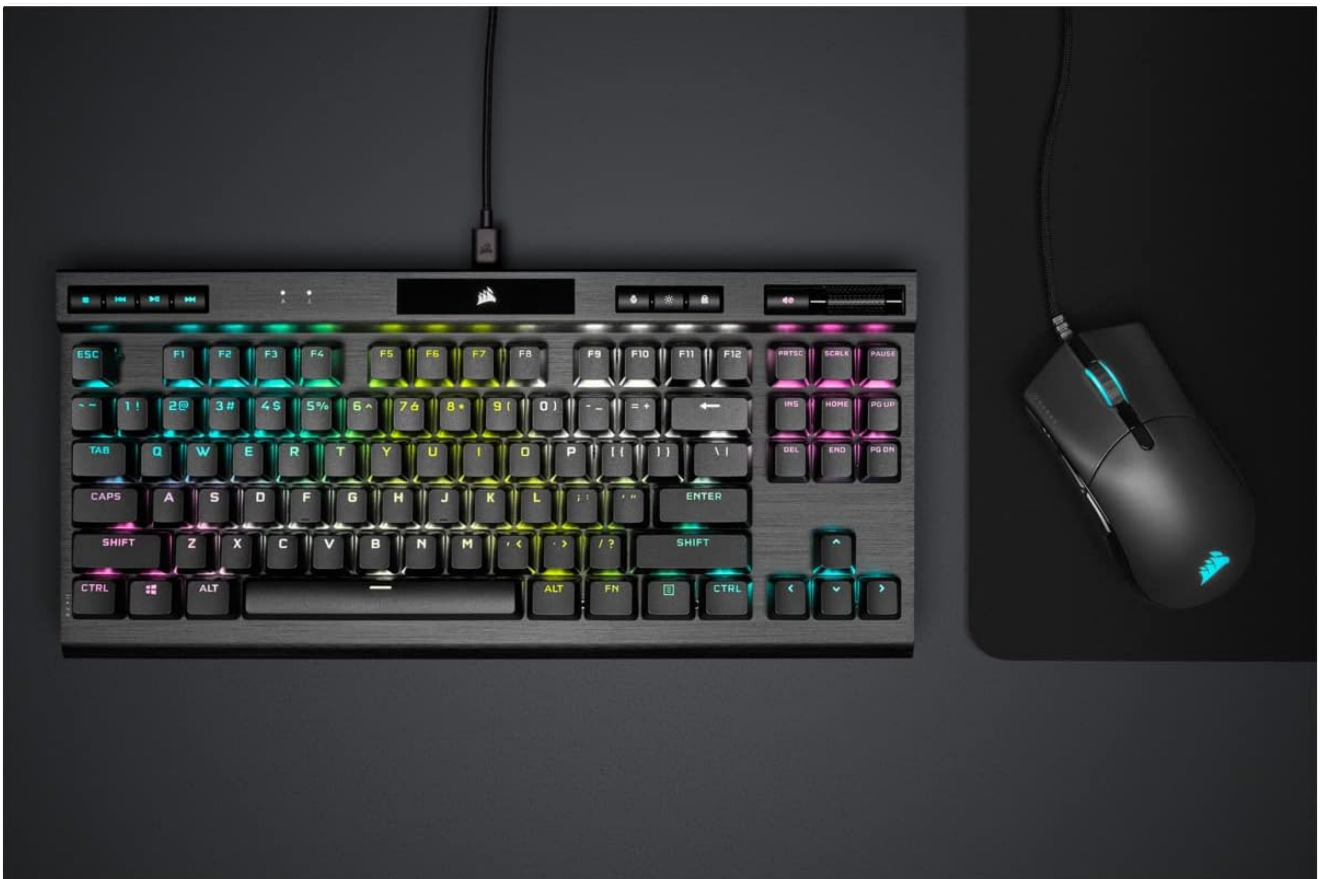


Figure 5.1: Keyboard in a typical gaming setup, demonstrating its compact form factor.

## 6. MAINTENANCE

---

Proper maintenance ensures the longevity and optimal performance of your keyboard.

- **Cleaning the Keyboard:**

- Disconnect the keyboard from your computer before cleaning.
- Use a can of compressed air to remove dust and debris from between the keycaps.
- Wipe the surface of the keyboard and keycaps with a soft, lint-free cloth lightly dampened with water or a mild, non-abrasive cleaning solution. Avoid harsh chemicals.
- Do not spray liquid directly onto the keyboard.

- **Keycap Removal (Advanced Users):**

- If you need to remove keycaps for deeper cleaning or replacement, use a keycap puller tool.
- Gently pull the keycap straight up to avoid damaging the switch stem.
- When reattaching, align the keycap with the switch stem and press down firmly until it clicks into place.

- **Cable Management:** Ensure the detachable USB-C cable is not excessively bent or strained, especially at the connection points, to prevent damage.

## 7. TROUBLESHOOTING

---

If you encounter issues with your Corsair K70 RGB TKL keyboard, refer to the following common solutions.

Problem	Possible Cause	Solution
---------	----------------	----------

Problem	Possible Cause	Solution
Keyboard not responding / No lighting	Loose USB connection, incorrect USB port, driver issue.	<p>Ensure the USB cable is securely connected to both the keyboard and the computer.</p> <p>Try a different USB port on your computer (preferably a USB 3.0 or higher port).</p> <p>Restart your computer.</p> <p>Reinstall iCUE software and update keyboard firmware.</p>
RGB lighting not working or incorrect	iCUE software issue, profile settings, Tournament Mode active.	<p>Ensure iCUE software is running and updated.</p> <p>Check the active profile in iCUE and verify lighting settings.</p> <p>Disable Tournament Mode if it is active (check the switch on the back of the keyboard).</p> <p>Perform a soft reset of the keyboard (refer to Corsair support for specific instructions).</p>
Keys are too sensitive / Accidental presses	Characteristic of OPX optical-mechanical switches, user adjustment needed.	<p>The OPX switches have a very low actuation point (1.0mm). This is by design for rapid input.</p> <p>Adjust your typing/gaming style to a lighter touch.</p> <p>There are no sensitivity adjustments for these switches.</p>
Macros not executing	Tournament Mode active, iCUE profile issue.	<p>Ensure Tournament Mode is disabled.</p> <p>Verify macro assignments within the iCUE software.</p> <p>Ensure the correct profile with the macros is active.</p>

For further assistance, please visit the Corsair support website or contact their customer service.

## 8. SPECIFICATIONS

Detailed technical specifications for the Corsair K70 RGB TKL CHAMPION SERIES Gaming Keyboard.

Feature	Detail
<b>Model Name</b>	K70 RGB TKL CHAMPION SERIES
<b>Model Number</b>	CH-911901A-NA
<b>Brand</b>	Corsair
<b>Switch Type</b>	CORSAIR OPX RGB Optical-Mechanical
<b>Actuation Distance</b>	1.0mm

Feature	Detail
Keystroke Lifespan	150 Million
Polling Rate	Up to 8,000Hz (with AXON Hyper-Processing)
Key Rollover	Full N-Key Rollover (NKRO) with 100% Anti-Ghosting
Keycaps	PBT Double-Shot (1.5mm thickness)
Backlighting	Per-key RGB, programmable
Connectivity	Detachable USB Type-C to USB Type-A
Cable Length	1.8m (6ft)
Onboard Memory	Yes (up to 50 profiles)
Dimensions (LxWxH)	14.17 x 6.46 x 1.57 inches (360 x 164 x 40 mm)
Weight	1.94 pounds (0.88 kg)
Color	Black
Compatible OS	PC (Windows), Mac OS

## 9. WARRANTY AND SUPPORT

---

Corsair products come with a limited warranty. For specific warranty terms and conditions, please refer to the warranty information included with your product or visit the official Corsair website.

For technical support, driver downloads, firmware updates, and frequently asked questions, please visit the Corsair support page: [support.corsair.com](https://support.corsair.com).

You can also find additional resources and community forums on the Corsair website.