

[Manuals.plus](#) /

> [SANNCE](#) /

> SANNCE 2K Wireless Security Camera System SU-N48WHE0-V1-78GL-P-OP User Manual

SANNCE SU-N48WHE0-V1-78GL-P-OP

SANNCE 2K Wireless Security Camera System User Manual

Model: SU-N48WHE0-V1-78GL-P-OP

1. INTRODUCTION

1.1 System Overview

The SANNCE 2K Wireless Security Camera System provides comprehensive surveillance for your property. This system includes an 8-channel 5MP NVR and eight 3MP outdoor WiFi IP surveillance cameras, offering features such as one-way audio, night vision, remote access, and motion alerts. It is designed for easy setup and reliable performance, compatible with Alexa for integrated smart home control.

1.2 What's in the Box

Carefully unpack the box and ensure all items are present:

- 1x 8 Channel NVR
- 8x 3MP IP Cameras
- 1x Network Cable
- 8x Antennas
- 9x Power Adapters
- 1x USB Mouse
- 1x Quick Start Guide
- 4x Surveillance Signs
- 5x Mounting Screws Bags

Intelligent Human Detection

Customize Video Recording, 24/7 Monitoring.

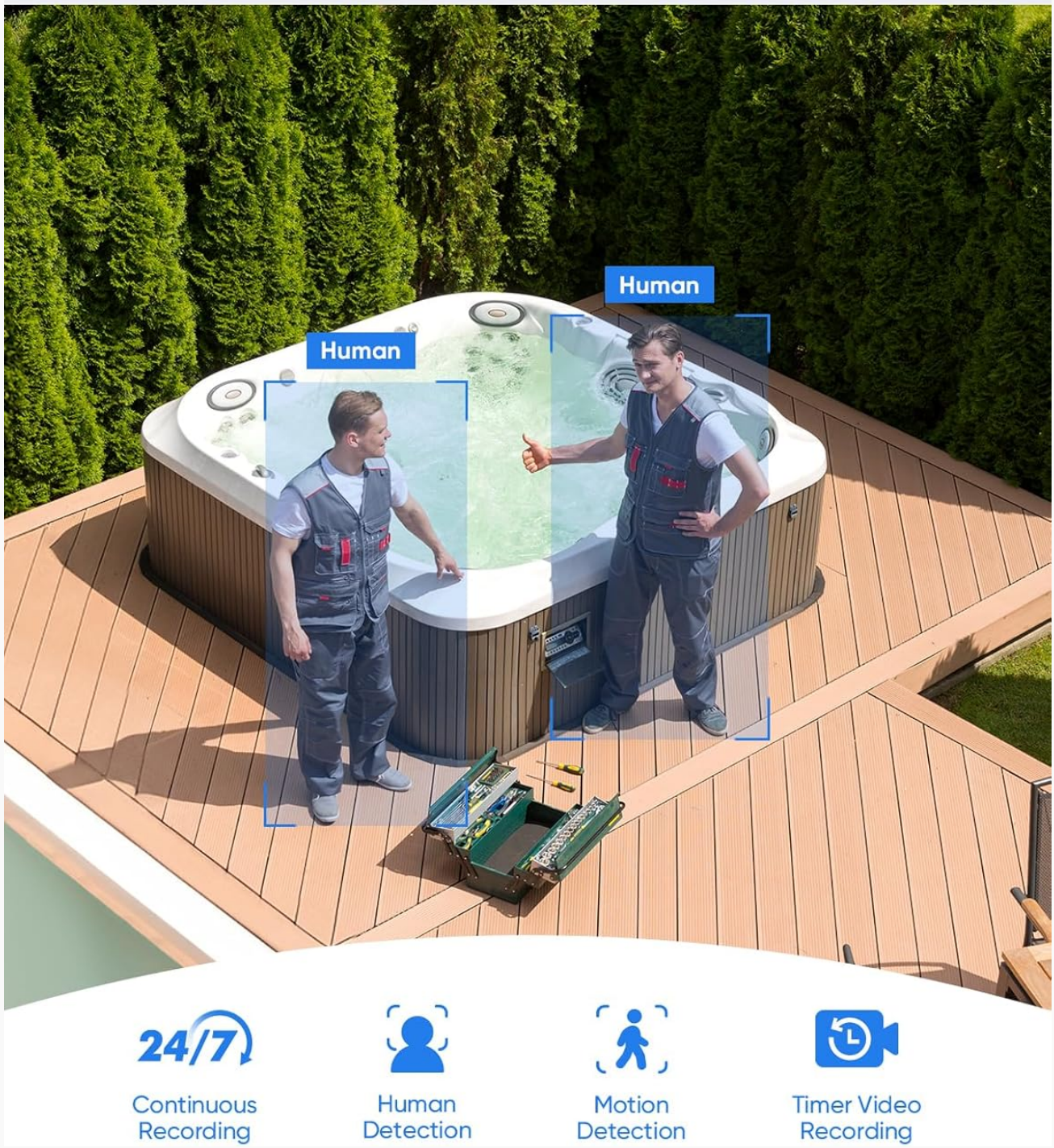


Image 1.1: All components included in the SANNCE 2K Wireless Security Camera System package.

2. SYSTEM SETUP

2.1 Initial Power-On and Connection

The system is designed for plug-and-play setup. Connect the power adapters to the cameras and the NVR. Connect the NVR to a PC or monitor using an HDMI or VGA cable. The system supports connection to a router via a 2.4GHz WiFi network or an Ethernet cable. The WiFi cameras will automatically reconnect to the system using auto

cascading technology if the connection is temporarily lost.

2.2 Camera Installation

Mount the cameras in desired outdoor or indoor locations. Ensure the cameras are within range of the NVR's WiFi signal or can utilize the auto cascading feature for extended range. The cameras are designed for easy installation with the provided mounting screws.

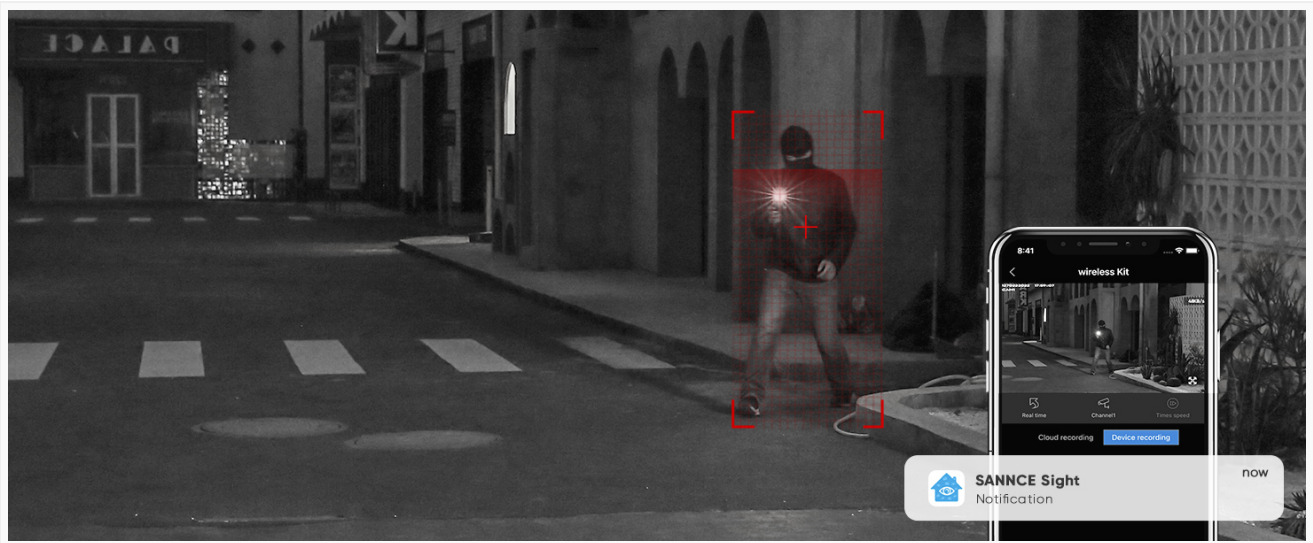


Image 2.1: Example of mounting a SANNCE wireless security camera.

Your browser does not support the video tag.

Video 2.1: This video demonstrates the easy installation and setup process for the SANNCE 2K Wireless Security Camera System, including mounting a camera and connecting it to the system.

2.3 Optimizing Wireless Connection

The system features auto cascading technology, allowing the camera closest to the NVR to act as a WiFi repeater. This boosts the network connection distance for cameras further away, extending coverage up to 3,300 ft. Position cameras strategically to maximize signal strength and coverage.



Image 2.2: Illustration of stable and reliable wireless connection within a home environment.

3. OPERATION

3.1 Remote Access and Smart Integration

Access your security system remotely through the dedicated mobile application or by connecting to an Alexa device for hands-free control. This allows you to view live footage, review recordings, and manage settings from anywhere.

Not Just a Security Product, But a Guardian for Your Home

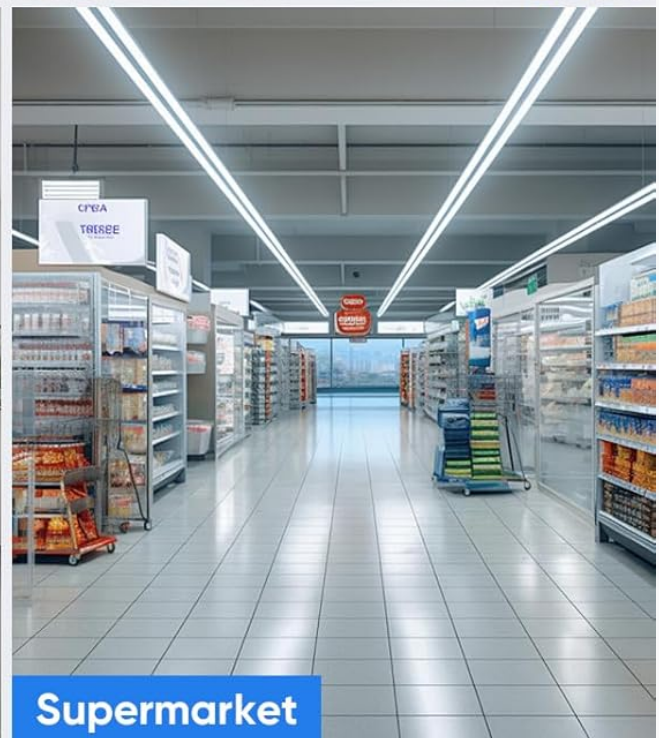
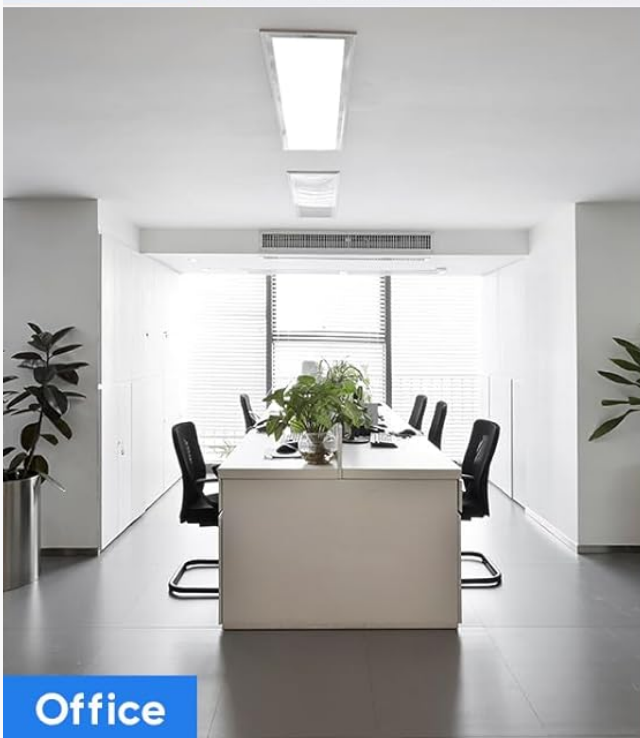


Image 3.1: Remote viewing of camera feeds and notifications via the mobile app.

3.2 Intelligent Human Detection

The system features AI human detection, which sends instant app pushes and email alerts with snapshots only when a person triggers motion. This reduces false alarms caused by animals, vehicles, or environmental changes, ensuring you receive relevant notifications.

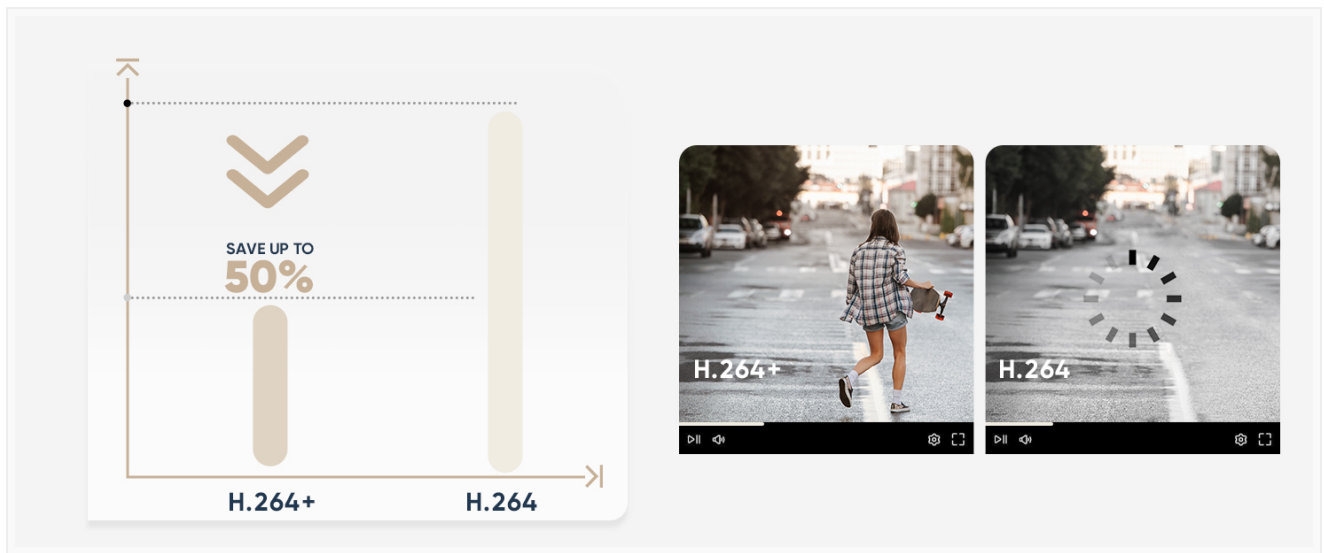


Image 3.2: AI human detection in action, identifying human figures in the surveillance area.

3.3 Night Vision Capabilities

Equipped with 18 infrared LEDs, the 3MP Super HD WiFi IP cameras provide crisp night vision footage up to 100 ft away. This ensures clear monitoring even in complete darkness, enhancing security around the clock.

What's in the Box



NVR*1



Camera*4



Cat5e Ethernet Cable
3.3ft/1m*1



USB Mouse*1



Power Adapter*5



Antenna*4



Surveillance Sign*4



Quick Start Guide*1



Mounting Screws Bag*5

Image 3.3: Demonstration of the camera's night vision capabilities, providing clear images in low light.

3.4 Weather Resistance

The wireless IP security cameras feature an IP66 waterproof rating, allowing them to withstand extreme weather conditions ranging from -20°C to 60°C (-4°F to 140°F). The durable metal housing ensures all-year-round protection, whether installed outdoors or indoors.

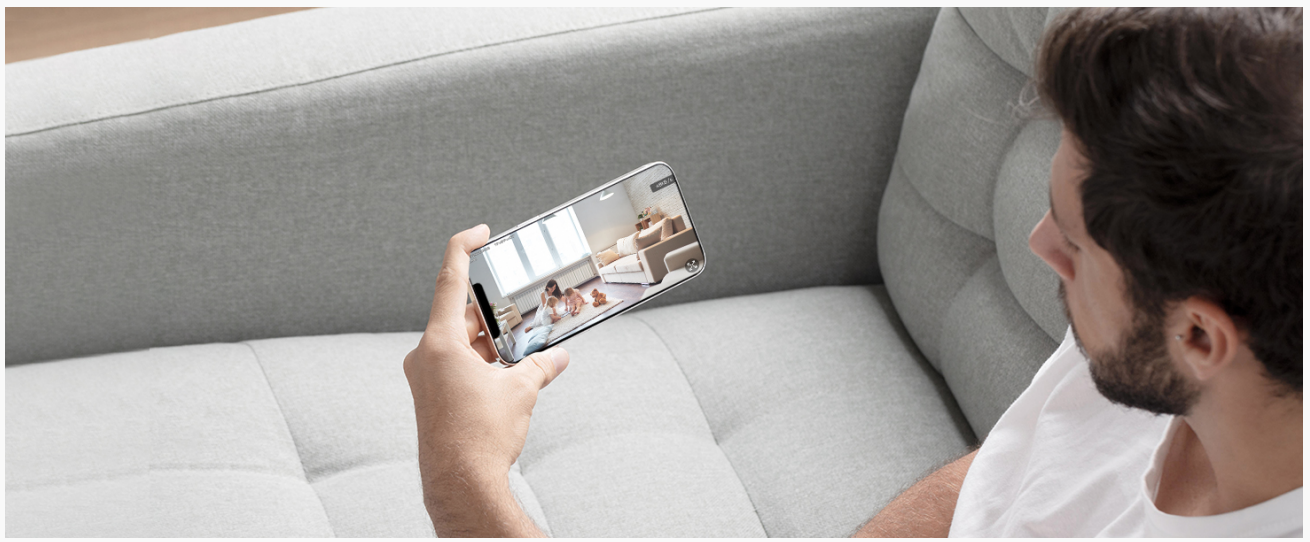


Image 3.4: SANNCE camera demonstrating its IP66 weather resistance in rainy conditions.

4. MAINTENANCE

To ensure optimal performance and longevity of your SANNCE security camera system, regular maintenance is recommended:

- **Lens Cleaning:** Periodically clean the camera lenses with a soft, damp cloth to remove dust, dirt, or smudges that may affect image clarity. Avoid abrasive cleaners.
- **Firmware Updates:** Check for and install any available firmware updates for the NVR and cameras. Updates often include performance improvements, new features, and security enhancements.
- **Cable Inspection:** Regularly inspect all power and network cables for any signs of wear, damage, or loose connections. Secure or replace damaged cables promptly.
- **NVR Ventilation:** Ensure the NVR is placed in a well-ventilated area to prevent overheating. Keep vents clear of obstructions.
- **Data Backup:** If critical recordings are stored locally, consider backing them up periodically to an external storage device.

5. TROUBLESHOOTING GUIDE

This section addresses common issues you might encounter with your SANNCE security camera system.

Problem	Possible Cause	Solution
No image on monitor/TV	Incorrect cable connection; NVR not powered on; Monitor input not selected.	Check HDMI/VGA cable connection; Ensure NVR power adapter is connected; Select correct input source on monitor/TV.
Camera not connecting to NVR	Camera not powered; Out of WiFi range; Interference; Pairing issue.	Ensure camera has power; Move camera closer to NVR or a repeater camera; Reduce WiFi interference; Re-pair camera with NVR (refer to Quick Start Guide).
No remote access via app	NVR not connected to internet; Incorrect app settings; Network firewall.	Verify NVR's internet connection (Ethernet or WiFi); Check app login credentials and device settings; Ensure router firewall is not blocking NVR access.

Problem	Possible Cause	Solution
False motion alerts	Sensitivity too high; Environmental factors (e.g., moving branches, insects).	Adjust motion detection sensitivity in NVR/app settings; Utilize AI Human Detection feature to filter non-human motion.

6. PRODUCT SPECIFICATIONS

Detailed technical specifications for the SANNCE 2K Wireless Security Camera System:

Brand: SANNCE

Model Number: SU-N48WHE0-V1-78GL-P-OP

Connectivity Technology: Wireless

Video Capture Resolution: 2K (NVR), 3MP (Cameras)

Special Features: Night Vision, Waterproof, Wireless, AI Human Detection, Remote Access, Alexa Compatibility

Number of Channels: 8

Memory Storage Capacity: 2 TB (HDD included)

Power Source: Power Adapter (Cameras are not battery powered)

Operating System: Linux-Based

Compatible Devices: Personal Computers, Smartphones (via app), Alexa devices

Signal Format: Digital

Night Vision Range: 100 Feet

Frame Rate: 30 fps

Recording Mode: Continuous, Motion Detection

Optical Sensor Technology: CMOS

Hardware Interface: Ethernet, HDMI, VGA

Lens Type: Fixed

Waterproof Rating: IP66

Operating Temperature: -20°C to 60°C (-4°F to 140°F)

Color: Black, White

Item Dimensions: 12.5 x 11 x 10.6 inches (System packaging)

7. CUSTOMER SUPPORT

For further assistance, technical support, or warranty information, please contact SANNCE customer service through the following channels:

- **Official Website:** Visit the SANNCE official website for FAQs, support articles, and contact forms.
- **Email Support:** Refer to your Quick Start Guide or the SANNCE website for the dedicated support email address.
- **Online Chat:** Some regions may offer online chat support via the SANNCE website.

Please have your model number (SU-N48WHE0-V1-78GL-P-OP) and purchase details ready when contacting support.

