

## KETOTEK D52-2047

# KETOTEK D52-2047 Digital AC Power Meter

## Instruction Manual

### 1. PRODUCT OVERVIEW

The KETOTEK D52-2047 is a single-phase digital AC power meter designed for measuring various electrical parameters. It provides accurate readings for voltage, current, active power, electrical energy, cumulative time of electrical energy, and power factor. This meter is suitable for a wide range of applications in residential, commercial, and industrial settings.



Figure 1: KETOTEK D52-2047 Digital AC Power Meter

## 2. SAFETY INFORMATION

Please read and understand all safety instructions before installation and operation. Failure to follow these instructions may result in electric shock, fire, or serious injury.

- Installation should only be performed by qualified personnel.
- Ensure the power supply is disconnected before any installation or maintenance.
- Do not operate the device if it is damaged or malfunctioning.
- The meter is designed for indoor use in dry environments.
- The housing is made of ABS flame-retardant material for enhanced safety.

# Safe And Durable

The shell is made of ABS flame retardant material.



Figure 2: The meter features a durable, flame-retardant ABS casing.

## 3. PRODUCT FEATURES

The KETOTEK D52-2047 offers comprehensive monitoring capabilities:

- **Multi-data Display:** Simultaneously shows AC voltage, AC current, power factor, active power, electrical energy, and cumulative time of electrical energy.
- **High Precision:** Equipped with high-precision chips for accurate measurements.
- **Data Storage:** Automatically saves electrical energy and cumulative time data upon power-off, resuming data collection when power is reconnected.
- **Data Reset Function:** Allows resetting of electrical energy data by pressing the 'SAM CK' button for five seconds.
- **Clear LED Display:** Red and green LED indicators ensure easy readability of digital values.
- **DIN Rail Mountable:** Designed for easy installation on a standard DIN rail.

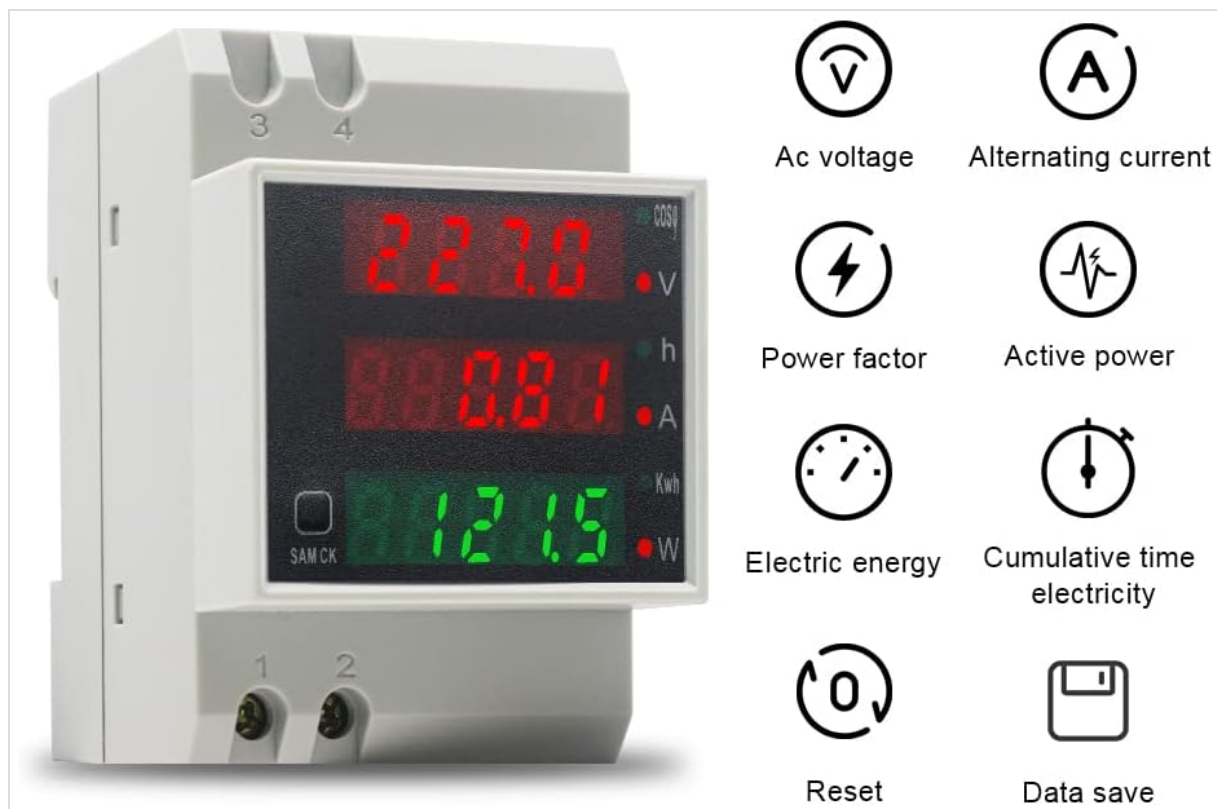


Figure 3: Key measurement functions including AC voltage, alternating current, power factor, active power, electric energy, cumulative time electricity, reset, and data save.

## 4. SPECIFICATIONS

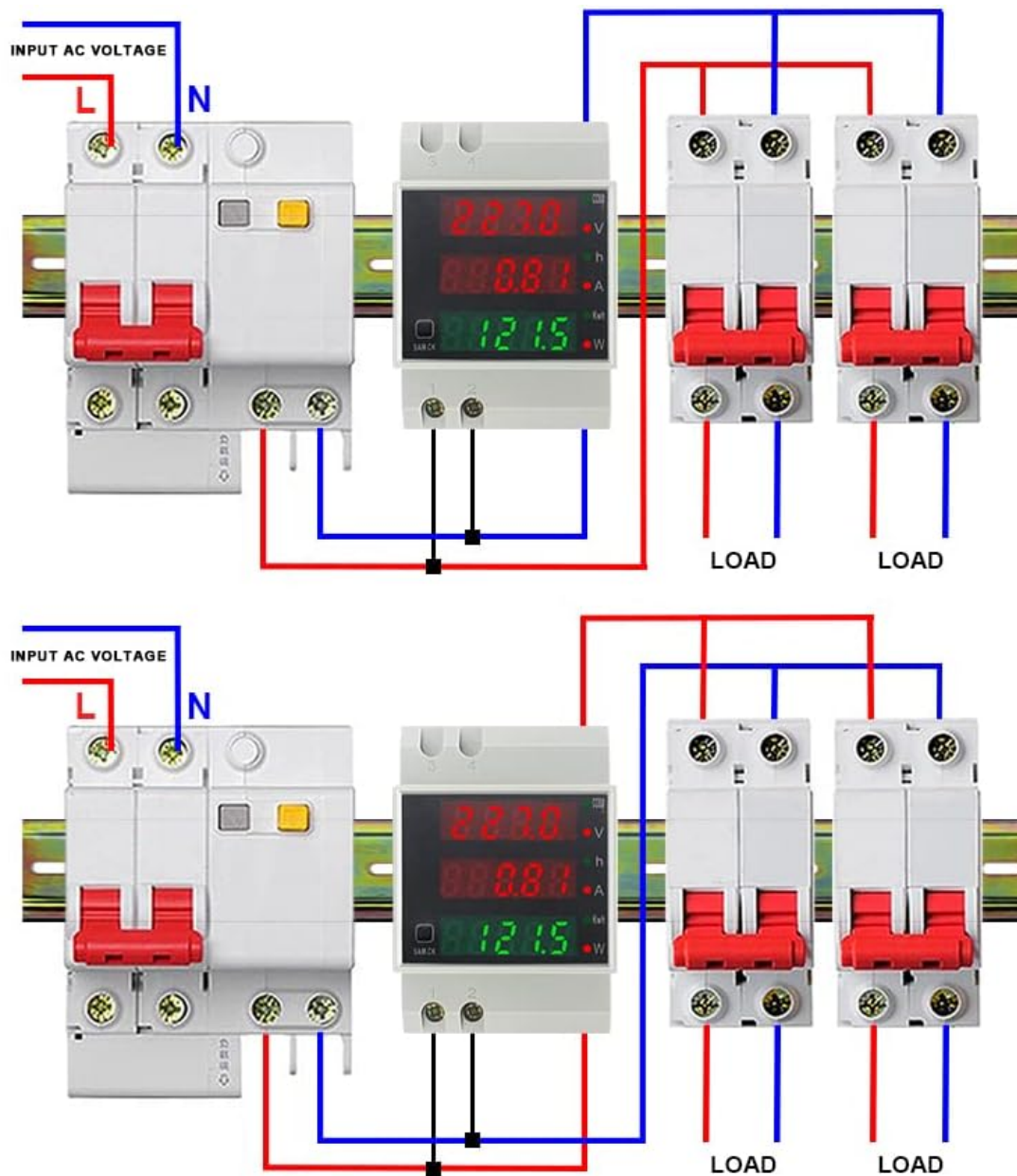
Parameter	Value
Voltage Range	AC 80V-300V
Current Range	AC 0.0-100A
Active Power Range	0.0-30000W
Electrical Energy Range	0-99999kwh
Power Factor Range	1.000-0.000
Cumulative Time of Electrical Energy	0.00-999.59 hours
Model Number	D52-2047
Dimensions	5.4 x 6.4 x 8 cm
Weight	130 g

## 5. INSTALLATION

The KETOTEK D52-2047 is designed for easy DIN rail installation. Follow these steps carefully:

1. **Preparation:** Ensure the main power supply is turned off before beginning installation.
2. **Mounting:** Attach the meter to a standard 3.5cm DIN rail. The meter's dimensions are 5.4 x 6.4 x 8 cm, with a 3.5cm standard DIN-rail installation width.

3. **Wiring:** Connect the AC voltage input to terminals 1 and 2. For current measurement, pass one of the phase or neutral conductors (L1, L2, L3, or N in a three-phase system, or L/N in a single-phase system) through the designated hole on the meter. It is not necessary to distinguish between L and N when passing the wire through the hole.
4. **Verification:** After wiring, double-check all connections for security and correctness before restoring power.



**The wire passing through the hole does not need to distinguish between L and N**

Figure 4: Wiring diagram for single-phase AC power measurement. Ensure only one conductor passes through the current sensing hole.

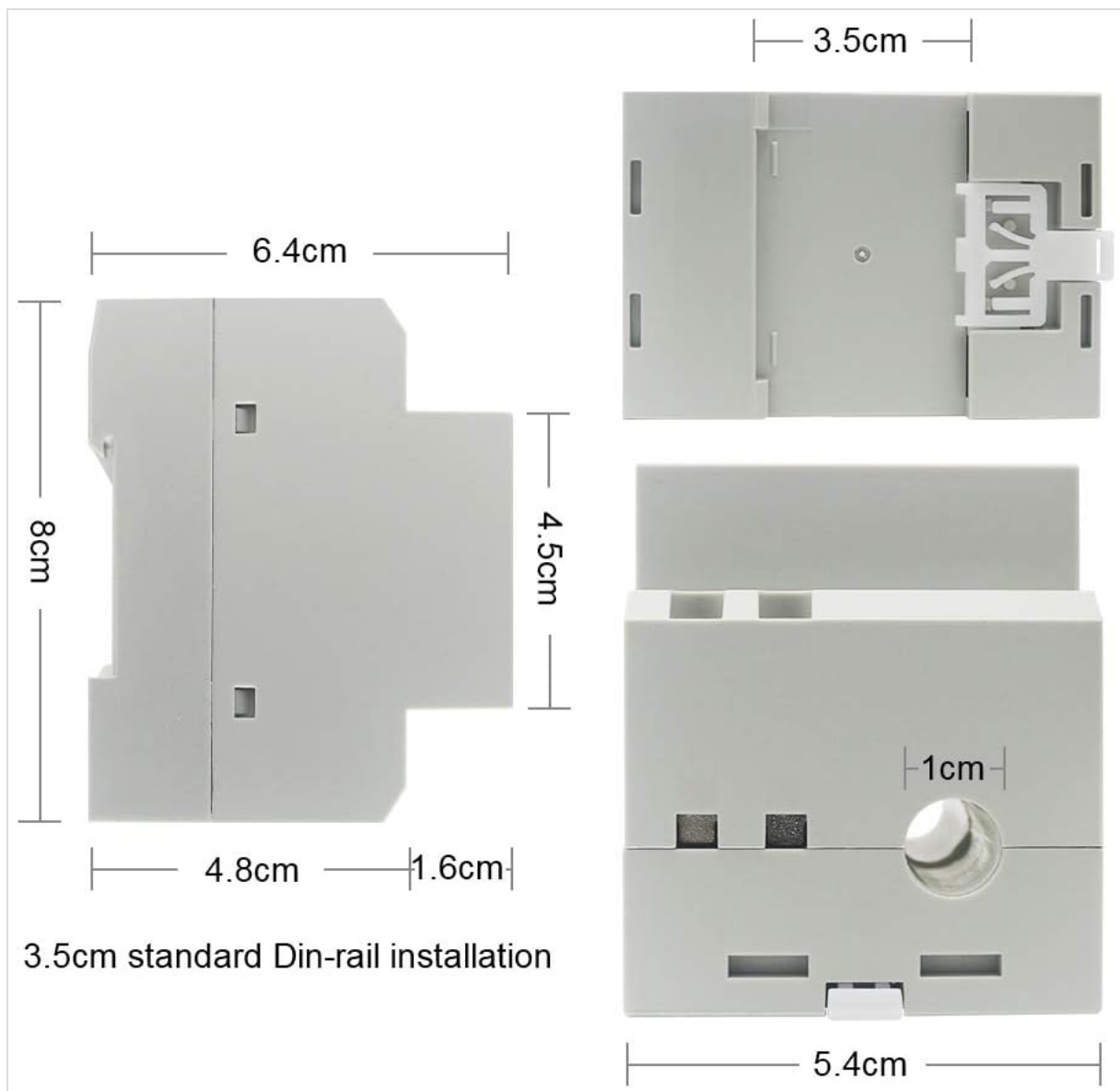


Figure 5: Product dimensions for installation planning, showing 3.5cm standard DIN-rail installation.

## 6. OPERATION

Once installed and powered, the meter will display various electrical parameters on its LED screen.

### 6.1. Display Overview

The meter features a clear LED display with red and green segments. The red segments typically show voltage and current, while the green segment shows energy and active power. Indicators for Power Factor ( $\cos\phi$ ), Cumulative Time (h), and Electrical Energy (kwh) are also present.





Figure 6: Display elements showing Power Factor/Voltage, Timing/Current, and Energy/Power displays, along with the function conversion button.

## 6.2. Function Conversion and Data Reset

The 'SAM CK' button on the front panel serves two primary functions:

- **Switching Display:** Press the 'SAM CK' button briefly to cycle through the display of Power Factor ( $\cos\phi$ ), Cumulative Time of Electrical Energy (h), and Electrical Energy (kwh). The corresponding red LED will illuminate to indicate the currently displayed parameter.
- **Data Reset:** To reset the electrical energy (kwh) value, press and hold the 'SAM CK' button for five seconds while the meter is displaying electrical energy. The meter will then reset the accumulated energy data.



Figure 7: The 'SAM CK' button for display mode switching and data reset.

## 7. MAINTENANCE

To ensure optimal performance and longevity of your KETOTEK D52-2047 Digital AC Power Meter, follow

these maintenance guidelines:

- Keep the meter clean and free from dust and moisture. Use a soft, dry cloth for cleaning.
- Avoid exposing the device to extreme temperatures, direct sunlight, or corrosive substances.
- Do not attempt to open or repair the meter yourself, as this will void the warranty and may pose a safety risk.

## 8. TROUBLESHOOTING

---

If you encounter issues with your KETOTEK D52-2047, consider the following basic troubleshooting steps:

- **No Display:** Check if the power supply is connected correctly and within the specified voltage range (AC 80V-300V). Ensure all wiring is secure.
- **Incorrect Readings:** Verify that the current sensing wire is correctly passed through the meter's hole and that only one conductor is used for measurement.
- **Data Not Resetting:** Ensure you are pressing and holding the 'SAM CK' button for the required five seconds while the electrical energy (kwh) is displayed.

For persistent issues, contact customer support.

## 9. WARRANTY AND SUPPORT

---

KETOTEK products are manufactured to high-quality standards. For warranty information and technical support, please refer to the documentation included with your purchase or visit the official KETOTEK website. Keep your proof of purchase for warranty claims.

## 10. PRODUCT VIDEOS

---

No official product videos specifically for the KETOTEK D52-2047 Digital AC Power Meter were found from the seller. Please refer to the images and text instructions for guidance.