

[Manuals.plus](#) /

> [Smuxee](#) /

> Smuxee 23.6" Round Nesting Coffee Table Set - Oak Wood Grain Instruction Manual

## Smuxee nesting tables

# Smuxee 23.6" Round Nesting Coffee Table Set - Oak Wood Grain

Instruction Manual

## 1. PRODUCT OVERVIEW

The Smuxee Nesting Coffee Table Set of 2 provides a flexible and stylish furniture solution for various spaces. This set includes two round tables designed to be nested together for space-saving or separated for individual use. The tables feature a durable wood grain top and a sturdy metal frame, blending modern industrial aesthetics with rustic charm.



Image 1.1: Smuxee Nesting Coffee Table Set in a living room, showcasing both tables.

## 2. KEY FEATURES

---

- **Space-Saving Design:** Circular nesting tables can be stacked to save space, ideal for smaller rooms.
- **Versatile Use:** Can function as coffee tables, side tables, end tables, or corner tables.
- **Durable Construction:** Made from high-quality thick particle board and strong, durable steel legs.
- **Adjustable Stability:** Equipped with adjustable non-slip feet to ensure stability on uneven surfaces.
- **Elegant Aesthetic:** Vintage design with wood grain top and matte black metal base.



Image 2.1: Key features and dimensions of the Smuxee Nesting Coffee Table Set.



Image 2.2: Demonstrating the versatility of the nesting tables: nested, stacked, and individually placed.

### 3. SAFETY INFORMATION

- Ensure all parts are securely fastened before use.
- Do not exceed the maximum weight recommendation of 15.4 pounds per table.
- Keep small children away during assembly to prevent choking hazards from small parts.
- Place tables on a flat, stable surface to prevent tipping.
- Avoid placing hot items directly on the table surface without protective coasters.

### 4. PARTS LIST

Please verify that all components are present before beginning assembly.

Part	Description	Quantity
------	-------------	----------

Part	Description	Quantity
Tabletop (Large)	Round wood grain top for the larger table	1
Tabletop (Small)	Round wood grain top for the smaller table	1
Leg Frame (Large)	Metal frame for the larger table	1
Leg Frame (Small)	Metal frame for the smaller table	1
Adjustable Feet	For leveling and stability	8
Screws/Hardware	Necessary fasteners for assembly	As needed
Assembly Guide	Printed instruction manual	1

Tools Recommended For Assembly: Allen Key, Screw Driver (not included).

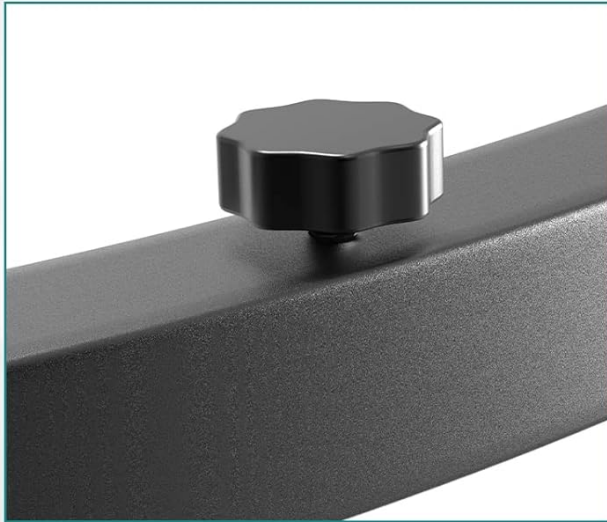
## 5. SETUP AND ASSEMBLY

Follow these steps to assemble your Smuxee Nesting Coffee Table Set. An assembly guide is included with your product for detailed visual instructions.

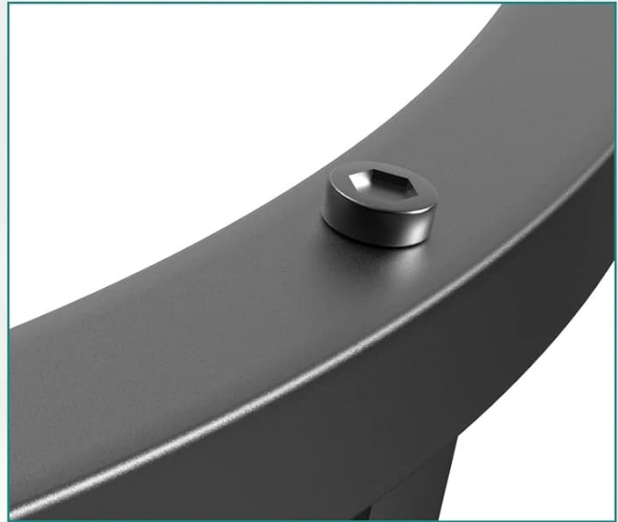
1. Unpack all components and verify against the parts list.
2. Attach the adjustable feet to the bottom of each metal leg frame.
3. Align each tabletop with its corresponding metal leg frame.
4. Secure the tabletops to the frames using the provided screws and tools. Ensure all screws are tightened for stability.
5. Place the smaller table under the larger table for nesting, or position them separately as desired.

Your browser does not support the video tag.

Video 5.1: Official Smuxee video demonstrating the assembly and features of the Round Nesting Tables.



Adjustable Foot Pads



High-Quality Metal Brackets



Thickened Top Plate



Smooth Around Arc

Image 5.2: Detailed view of table components including adjustable foot pads and metal brackets.

## 6. OPERATING INSTRUCTIONS

The Smuxee Nesting Coffee Table Set is designed for flexible use in various configurations:

- **Nesting:** Slide the smaller table completely under the larger table to save space when not in use.
- **Separated:** Use the tables individually as a coffee table, side table, or end table in different areas of a room.
- **Staggered:** Partially slide the smaller table out from under the larger one to create a multi-level display or provide additional surface area.

Your browser does not support the video tag.

Video 6.1: Official Smuxee video showcasing the nesting and versatile use of the coffee tables.

## 7. MAINTENANCE AND CARE

- **Cleaning:** Wipe the table surfaces with a soft, damp cloth. Avoid harsh chemicals or abrasive cleaners.
- **Spills:** Although the tabletop is designed to be waterproof, promptly wipe up any spills to prevent potential damage.
- **Protection:** Use coasters under drinks and placemats under hot dishes to protect the surface from heat and moisture rings.
- **Stability Check:** Periodically check and tighten all screws to ensure the tables remain stable.
- **Avoid Scratches:** Do not drag sharp or heavy objects across the tabletop.

## 8. TROUBLESHOOTING

- **Wobbling Table:** If a table wobbles, adjust the non-slip feet on the bottom of the legs until the table is stable. Ensure all screws are tightened.
- **Missing Parts:** If any parts are missing or damaged upon arrival, please contact Smuxee customer support immediately for assistance.
- **Difficulty Assembling:** Refer to the included Assembly Guide for detailed illustrations. If issues persist, contact customer support.

## 9. SPECIFICATIONS

Attribute	Detail
Brand	Smuxee
Model Name	nesting tables
ASIN	B09W4SGYMC
UPC	752859452867
Large Table Dimensions	23.6"D x 23.6"W x 17.7"H
Small Table Dimensions	15.7"D x 15.7"W x 15.7"H
Item Weight	15.4 Pounds
Maximum Weight Recommendation	15.4 Pounds
Frame Material	Alloy Steel
Top Material Type	Engineered Wood (Particle Board)
Color	Oak (Top), Matte Black (Frame)
Shape	Round
Indoor/Outdoor Usage	Indoor
Assembly Required	Yes

## 10. WARRANTY AND SUPPORT

For any questions, concerns, or warranty claims regarding your Smuxee Nesting Coffee Table Set, please contact Smuxee customer support through the retailer's platform or visit the official Smuxee store page. Please retain your proof of purchase for warranty purposes.

Visit the [Smuxee Store](#) for more information.