

MoesGo AUB088K9T82Z

MoesGo WiFi Smart Wall Light Switch (Model AUB088K9T82Z) Instruction Manual

Your guide to installation, operation, and smart home integration.



1. INTRODUCTION

This manual provides detailed instructions for the installation, configuration, and operation of your MoesGo WiFi Smart Wall Light Switch. This device allows you to control your lighting remotely via a smartphone application, voice commands, or directly through its touch panel. It supports multi-control functionality and integrates with popular smart home platforms.



Image 1.1: MoesGo WiFi Smart Wall Light Switch and its retail packaging.

2. SAFETY INFORMATION AND IMPORTANT CONSIDERATIONS

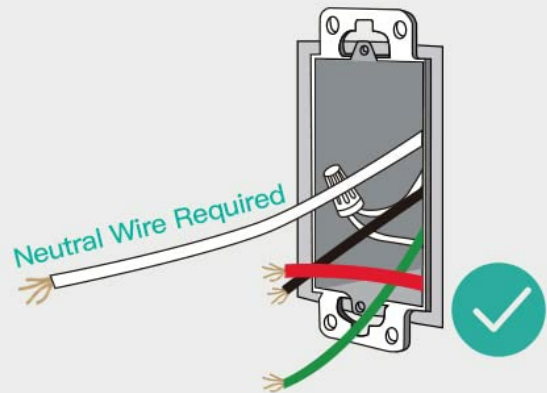
Before proceeding with installation, please read and understand the following safety guidelines. Improper installation can lead to electrical shock or damage to the device and your electrical system.

- **Neutral Wire Required:** This smart switch requires a neutral wire for operation. Verify that your electrical box has a neutral wire (typically white) before purchasing or attempting installation.
- **2.4GHz Wi-Fi Only:** The switch operates exclusively on a 2.4GHz Wi-Fi network. It is not compatible with 5GHz Wi-Fi networks. Ensure your router supports 2.4GHz and that your device is connected to this frequency during pairing.
- **Power Disconnection:** Always turn off power at the circuit breaker before installing, removing, or servicing the switch. Failure to do so can result in serious injury or death.
- **Professional Installation:** If you are unfamiliar with electrical wiring, consult a qualified electrician.
- **Not a Dimmer Switch:** This device is an ON/OFF switch and does not support dimming functionality.

- **Not for Traditional 3-Way Wiring:** This switch uses a multi-control association via the app for 3-way functionality, not traditional 3-way wiring.

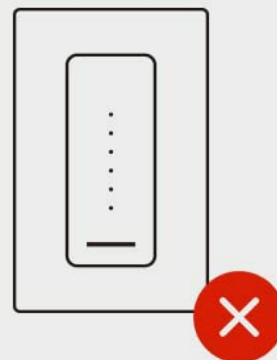
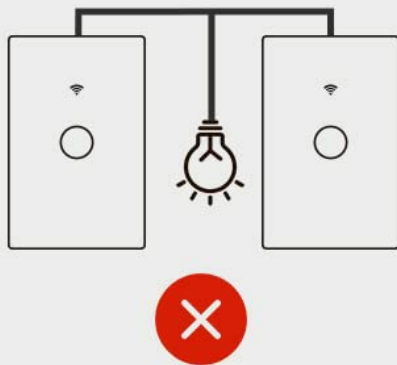
ATTENTION

2.4GHz



1. Only **2.4GHz Wi-Fi**,
Not 5GHz

2. **Neutral Wire Required**



3. **Not Use** as Traditional
3-Way Switch

4. **Not Use** as **Dimmer
Switch**

Image 2.1: Visual summary of critical installation requirements and limitations.

3. SPECIFICATIONS

Feature	Detail
Brand	MoesGo
Model Number	AUB088K9T82Z
Product Dimensions	4.7 x 2.9 x 1.5 inches
Weight	7.83 ounces
Operation Mode	ON-OFF-ON

Feature	Detail
Current Rating	10 Amps
Operating Voltage	240 Volts
Contact Type	Normally Open
Connector Type	Wireless (2.4GHz Wi-Fi)
Terminal	Screw
Circuit Type	3-way (via app multi-control)
Actuator Type	Smart Touch

4. INSTALLATION GUIDE

4.1 Pre-Installation Checklist

- Confirm presence of a neutral wire in your electrical box.
- Ensure your Wi-Fi network is 2.4GHz.
- Turn off power at the circuit breaker before starting.
- Gather necessary tools: screwdriver, wire strippers, voltage tester.

4.2 Wiring Instructions

1. **Turn off Power:** Locate the circuit breaker controlling the light switch you intend to replace and turn it OFF. Verify power is off using a voltage tester.
2. **Remove Old Switch:** Carefully remove the existing wall plate and unscrew the old switch from the electrical box. Disconnect the wires.
3. **Identify Wires:** Identify the Live (Load), Neutral, and Ground wires. The Live wire typically carries power from the breaker, the Neutral wire completes the circuit, and the Ground wire provides safety.
4. **Connect New Switch:** Connect the wires from your electrical box to the MoesGo Smart Switch according to the diagram below. Ensure all connections are secure.
 - Connect the Live wire (L) from the electrical box to the 'L IN' terminal on the switch.
 - Connect the Neutral wire (N) from the electrical box to the 'N IN' terminal on the switch.
 - Connect the Load wire(s) (to the light fixture) to the 'L1 OUT', 'L2 OUT', 'L3 OUT', 'L4 OUT' terminals as appropriate for your switch gang configuration.
 - Connect the Ground wire (if present) to the ground screw in the electrical box.
5. **Mount Switch:** Gently push the wired switch into the electrical box, ensuring wires are not pinched. Screw the switch into place.
6. **Install Wall Plate:** Attach the new glass wall plate.
7. **Restore Power:** Turn the power back ON at the circuit breaker. The switch indicator light should illuminate.

Update2:New ON/OFF Relay Status in App

More personalized settings as ON/OFF/Remember last status when power off.

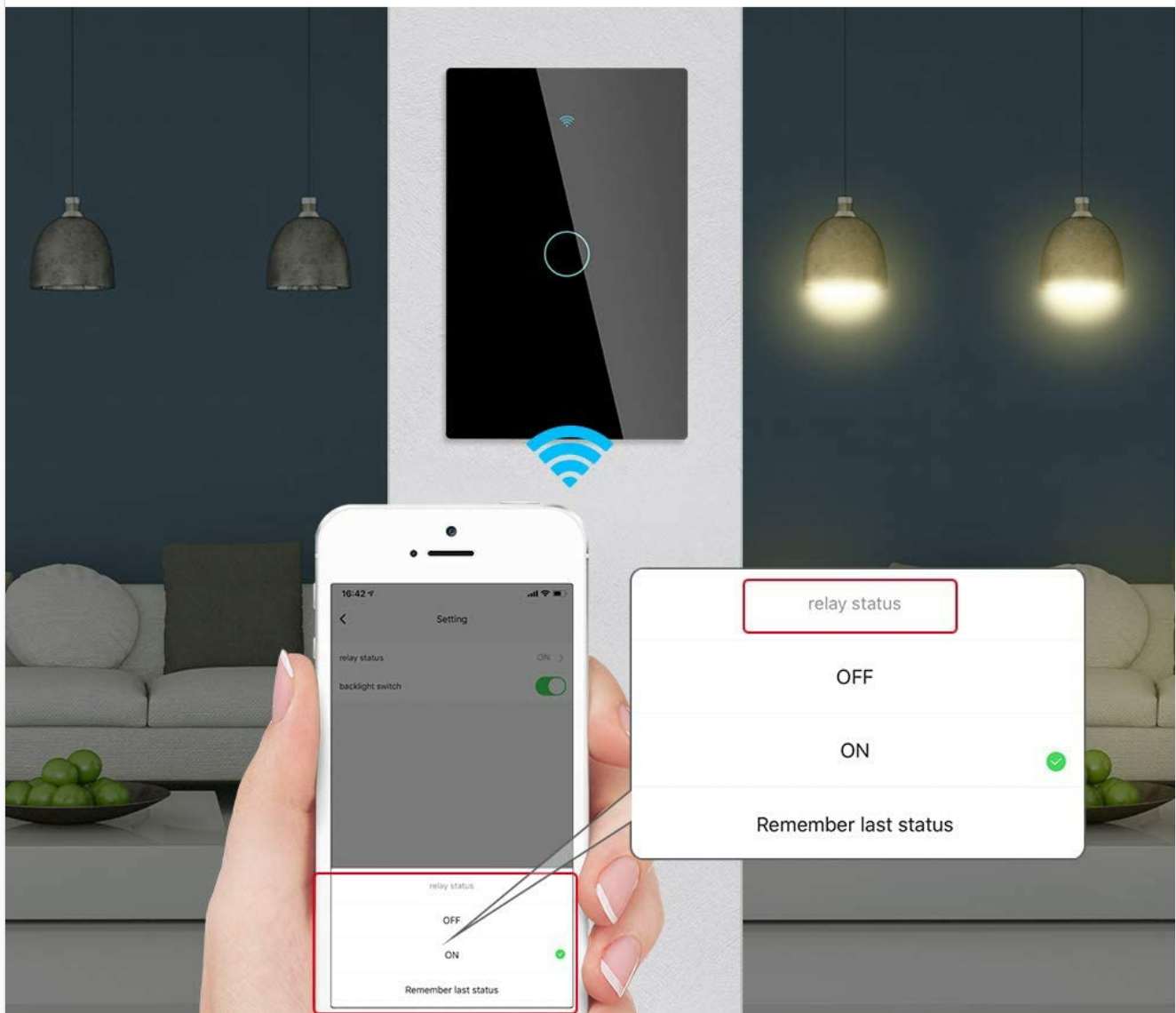


Image 4.1: Detailed wiring diagram for the MoesGo Smart Wall Light Switch.

5. APP PAIRING AND CONFIGURATION

5.1 Download the Smart Life/Tuya App

Search for "Smart Life" or "Tuya Smart" in your smartphone's app store (iOS or Android) and download the application. Register for an account or log in if you already have one.

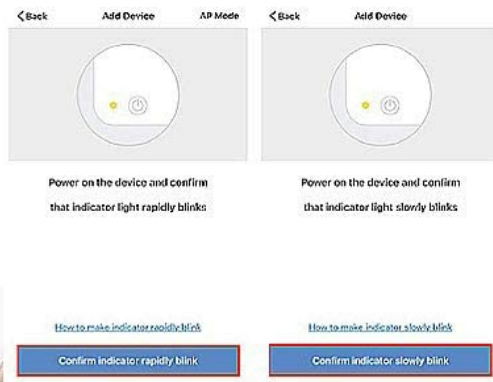
5.2 Pairing the Switch

1. **Enter Pairing Mode:** After restoring power, the Wi-Fi indicator on the switch should blink rapidly. If not, press and hold any button on the switch for 5-10 seconds until it blinks rapidly.
2. **Add Device in App:** Open the Smart Life/Tuya app. The app may automatically detect the new device. If not, tap the "+" icon in the top right corner, then select "Add Device" or "Auto Scan".
3. **Confirm Wi-Fi Network:** Ensure your phone is connected to a 2.4GHz Wi-Fi network. Enter your Wi-Fi password when prompted.

4. **Complete Pairing:** Follow the on-screen instructions in the app to complete the pairing process. Once successfully paired, you can rename the switch and assign it to a room.

Update5: New Pairing Mode with Simple Operations

Others



Power on the device and confirm that indicator light rapidly blinks


Power on the device and confirm that indicator light slowly blinks

How to make indicator rapidly blink

Confirm indicator rapidly blink

How to make indicator slowly blink

Confirm indicator slowly blink



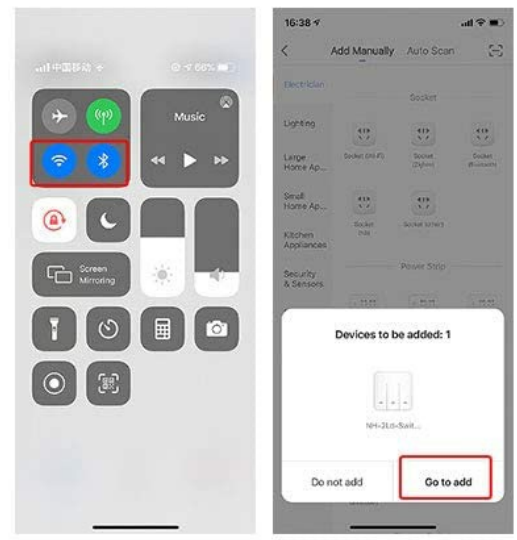
So disgusting!

Why fails to connect again!

I am crazy about the complex operations!

Who can help me?

Ours



- ✓ 1. With WiFi+Bluetooth connected for automatic identification and easy configuration.
- ✓ 2. No more need to do so many complicated steps for pairing.
- ✓ 3. Quick and easy connection within 8 seconds.

Image 5.1: Simplified pairing process using the Smart Life app.

6. OPERATING INSTRUCTIONS

6.1 Manual Touch Control

Simply touch the corresponding button on the glass panel to turn the connected light ON or OFF.

6.2 Remote Control via Smart Life/Tuya App

Once paired, you can control your lights from anywhere using the Smart Life/Tuya app on your smartphone. Open the app, select your switch, and tap the ON/OFF button.

6.3 Voice Control (Alexa & Google Home)

Integrate your MoesGo Smart Switch with Amazon Alexa or Google Home for hands-free voice control. Follow the

instructions within the Alexa or Google Home app to link your Smart Life/Tuya account.

- **For Alexa:** Say, "Alexa, turn on [Switch Name]" or "Alexa, turn off [Switch Name]".
- **For Google Home:** Say, "Hey Google, turn on [Switch Name]" or "Hey Google, turn off [Switch Name]".



Image 6.1: Overview of various control methods for the smart switch.

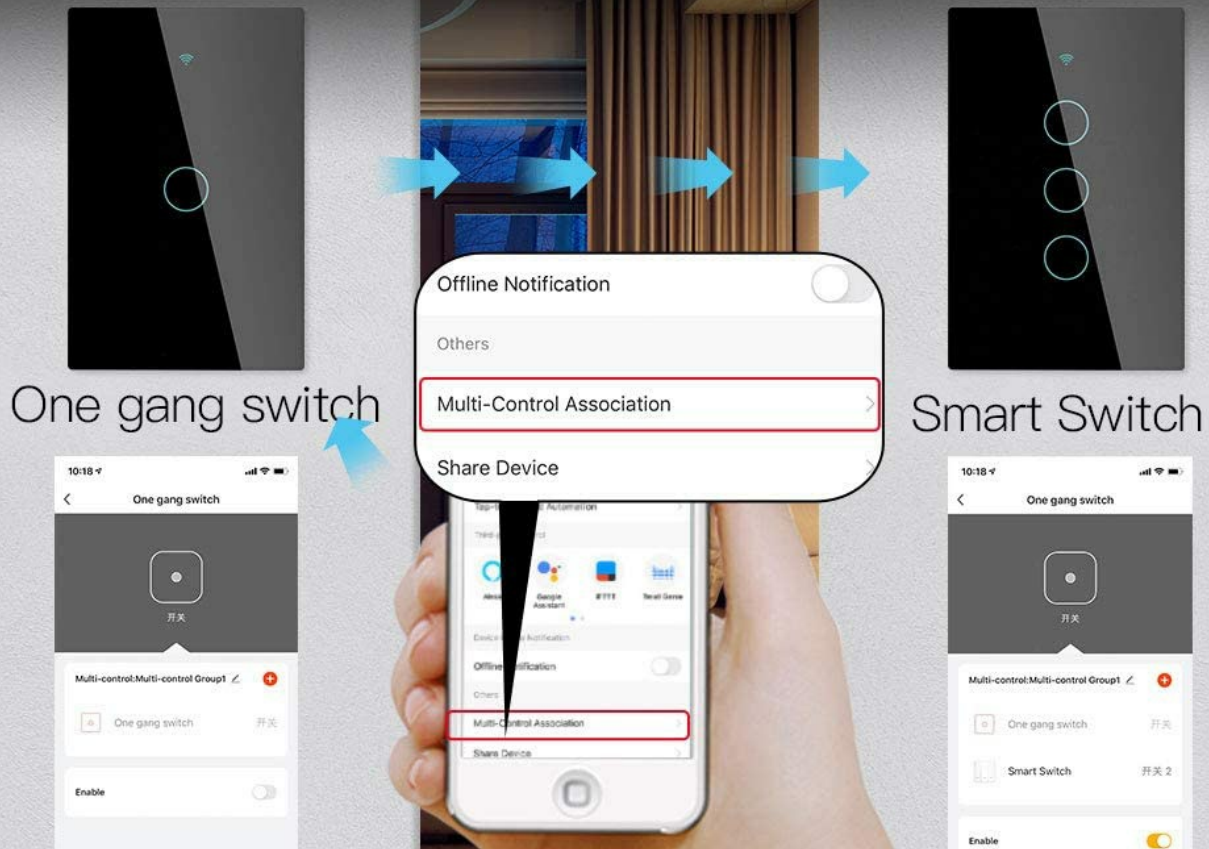
6.4 Multi-Control (3-Way) Association

The MoesGo Smart Switch supports multi-control functionality, allowing multiple switches to control a single light without traditional 3-way wiring. This is achieved through an association feature within the Smart Life/Tuya app.

1. Ensure both smart switches are installed and paired to the app.
2. In the app, select one of the switches.
3. Navigate to its settings or options, and look for "Multi-Control Association."
4. Follow the app's prompts to link the two switches to control the same light.

Update 1:A New Idea For 3 Way Control

Multi-control association of the switch to another wifi smart switch in the App for achieving 3 Way feature(two switches control one light).



Note: There is no need to wire the new added switch to the light, only L and N are required for wiring.

Image 6.2: App interface for setting up multi-control association.

6.5 Scheduling and Timers

Use the Smart Life/Tuya app to set schedules or countdown timers for your lights. This allows you to automate when lights turn ON or OFF, enhancing convenience and energy efficiency.

6.6 Relay Status and Backlight Settings

The app provides options to customize the switch's behavior:

- **Relay Status:** Configure the switch to remember its last ON/OFF state after a power outage, or to default to ON or OFF.
- **Backlight Switch:** Turn the switch's backlight ON or OFF. This can be useful for bedrooms to avoid light disturbance during sleep.

Update3:Backlight Switch with ON/OFF Optional No influences on sleep.

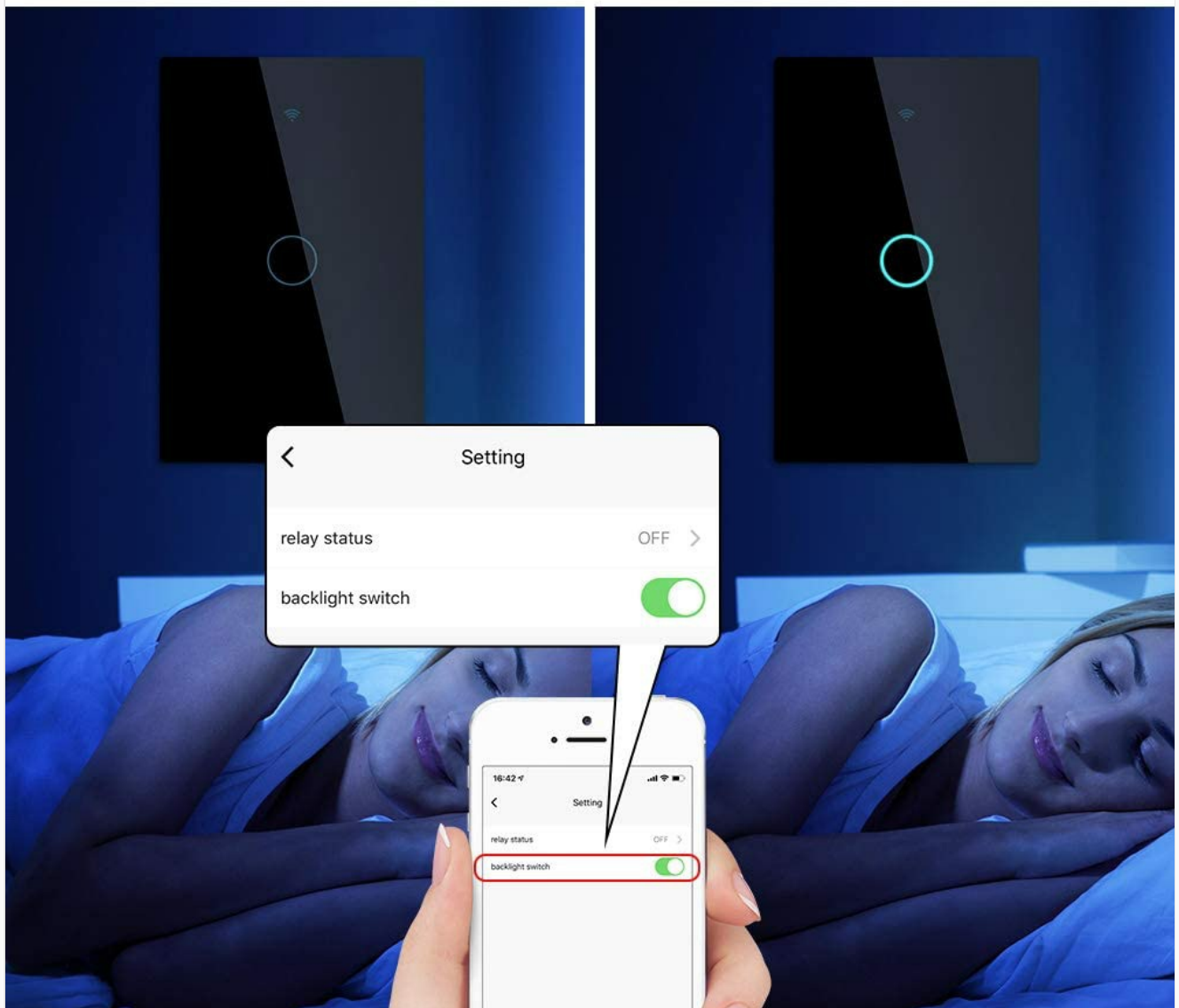


Image 6.3: App settings for customizing relay status.

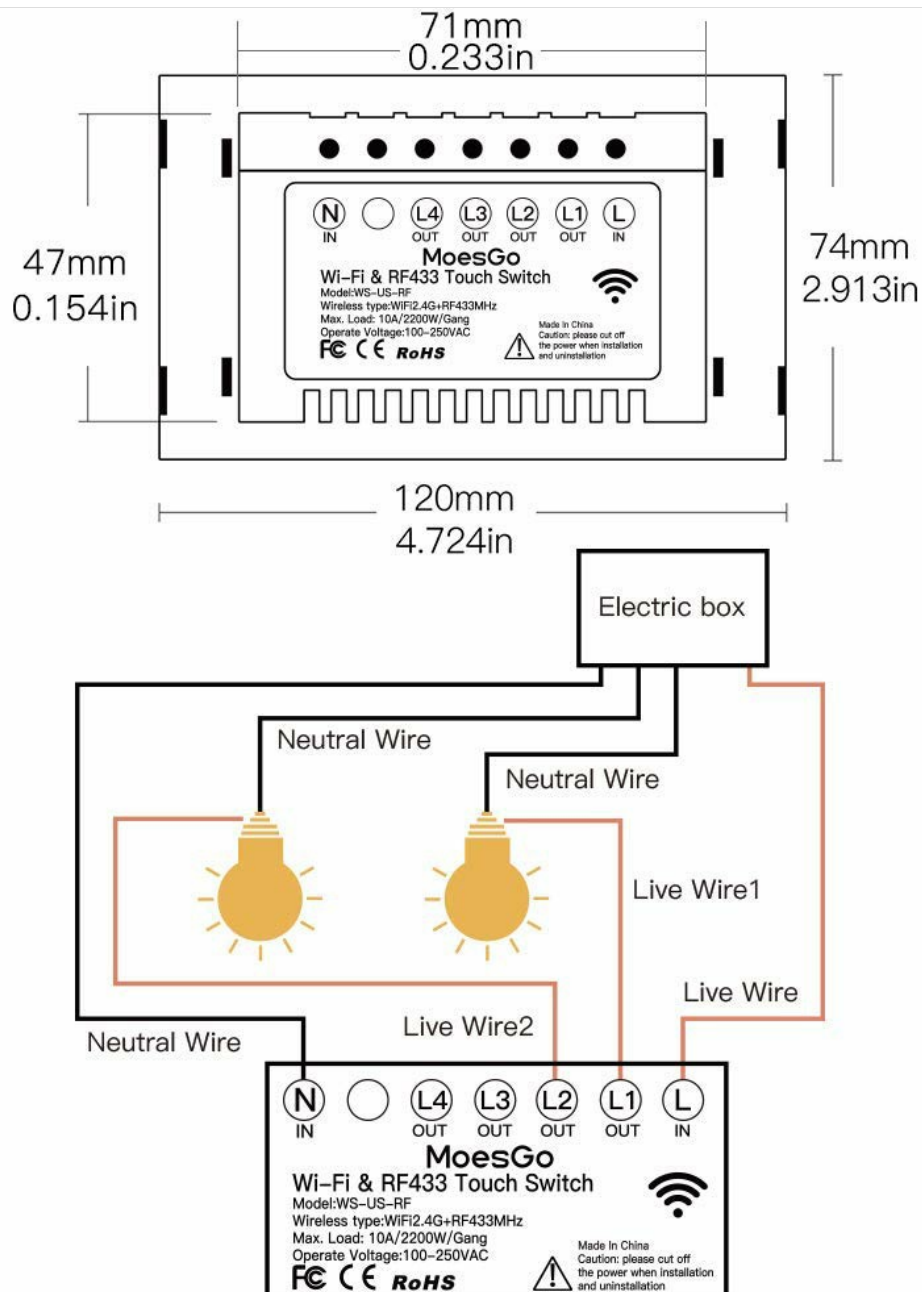


Image 6.4: App settings for controlling the switch backlight.

7. TROUBLESHOOTING

If you encounter issues with your MoesGo Smart Wall Light Switch, refer to the following common problems and solutions:

- **Switch Not Responding / No Power:**
 - Check the circuit breaker to ensure power is ON.
 - Verify all wiring connections are secure and correct, especially the neutral wire.
 - Ensure the light bulb is functional.
- **Unable to Pair with App:**
 - Confirm your Wi-Fi network is 2.4GHz. The switch does not support 5GHz.
 - Ensure your smartphone is connected to the 2.4GHz Wi-Fi network during pairing.
 - Make sure the switch is in rapid blinking pairing mode. If not, press and hold any button for 5-10

seconds.

- Move the switch closer to your Wi-Fi router if signal strength is weak.
- Temporarily disable mobile data on your phone during pairing.
- Restart your Wi-Fi router and try again.

• **Voice Control Not Working:**

- Ensure your Smart Life/Tuya account is correctly linked to Alexa or Google Home.
- Verify the switch name in the Smart Life/Tuya app matches the name used in voice commands.
- Check your internet connection.

• **Switch Turns ON/OFF Randomly:**

- Check for any active schedules or automation rules in the Smart Life/Tuya app that might be causing this behavior.
- Ensure no other smart home devices or users are inadvertently controlling the switch.
- If the issue persists, consider resetting the switch and re-pairing it.

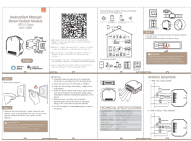
8. MAINTENANCE

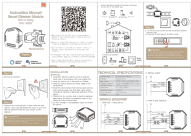


To ensure optimal performance and longevity of your MoesGo Smart Wall Light Switch, follow these maintenance guidelines:

- **Cleaning:** Use a soft, dry cloth to clean the glass panel. Avoid abrasive cleaners, solvents, or excessive moisture, which can damage the surface or internal components.
- **Firmware Updates:** Periodically check the Smart Life/Tuya app for available firmware updates for your switch. Updates can improve performance, add features, and enhance security.
- **Environmental Conditions:** Ensure the switch is installed in an indoor environment within recommended temperature and humidity ranges. Avoid exposure to direct sunlight, extreme temperatures, or high humidity.



Related Documents - AUB088K9T82Z

	<p>MoesGo MS-104B WiFi Smart Switch Module: Installation and User Guide</p> <p>Comprehensive guide for installing and using the MoesGo MS-104B 2-Gang WiFi Smart Switch Module. Covers wiring, app setup, voice control with Alexa and Google Assistant, and troubleshooting.</p>
---	---

	<p>MoesGo Smart Switch Instruction Manual Wi-Fi+RF433</p> <p>Detailed instruction manual for the MoesGo Smart Switch (WS-EU-RF/WS-US-RF) with Wi-Fi and RF433 connectivity. Learn how to install, set up with the MOES App, integrate with Alexa, and manage multi-control associations.</p>
	<p>MoesGo MS-105B Smart Dimmer Module WiFi 2 Gang - Installation and User Manual</p> <p>Comprehensive guide for the MoesGo MS-105B Smart Dimmer Module. Learn about installation, wiring, technical specifications, app control via Smart Life, and voice assistant integration with Amazon Alexa and Google Home.</p>
	<p>MoesGo Smart Switch (Single Pole) WS-SY-US-L110 Instruction Manual</p> <p>Instruction manual for the MoesGo Smart Switch (Single Pole) WS-SY-US-L110. Covers product outline, specifications, installation, app setup, safety information, and FCC/IC compliance.</p>
	<p>MoesGo Smart Single Fire Wire Switch: Installation and Setup Guide</p> <p>A comprehensive guide for installing and setting up the MoesGo Smart Single Fire Wire Switch, covering product features, safety information, installation steps, device pairing via Wi-Fi and RF, and integration with Amazon Alexa.</p>
	<p>MoesGo Smart Switch Wi-Fi+RF433 Single Live - Instruction Manual & Installation Guide</p> <p>This document provides a comprehensive instruction manual for the MoesGo Smart Switch Wi-Fi+RF433 Single Live. It covers product features, detailed installation steps, app connectivity via Wi-Fi and Bluetooth, voice control integration with Alexa and Google Assistant, RF remote pairing, service information, and warranty details. Designed for easy setup and smart home automation.</p>