

**DASH DFAF755GBBK01**

# DASH Tasti-Crisp Electric Air Fryer Oven 6 Qt. Analog Instruction Manual

Model: DFAF755GBBK01

## 1. IMPORTANT SAFEGUARDS

Please read all instructions carefully before using your DASH Tasti-Crisp Electric Air Fryer Oven. Failure to follow these instructions may result in property damage, personal injury, or damage to the appliance. Keep this manual for future reference.

- Do not touch hot surfaces. Use handles or knobs.
- To protect against electrical shock, do not immerse cord, plugs, or appliance in water or other liquid.
- Close supervision is necessary when any appliance is used by or near children.
- Unplug from outlet when not in use and before cleaning. Allow to cool before putting on or taking off parts.
- Do not operate any appliance with a damaged cord or plug, or after the appliance malfunctions or has been damaged in any manner.
- Do not use outdoors.
- Do not let cord hang over edge of table or counter, or touch hot surfaces.
- Do not place on or near a hot gas or electric burner, or in a heated oven.
- Extreme caution must be used when moving an appliance containing hot oil or other hot liquids.
- Do not use appliance for other than intended use.
- Always attach plug to appliance first, then plug cord into the wall outlet. To disconnect, turn any control to "off", then remove plug from wall outlet.
- A short power-supply cord is provided to reduce the risk resulting from becoming entangled in or tripping over a longer cord.

## 2. PRODUCT OVERVIEW

The DASH Tasti-Crisp Electric Air Fryer Oven utilizes AirCrisp® Technology to circulate hot air, cooking food with minimal to no oil. This 6-quart analog model is designed for ease of use and efficient cooking.



Image 1: The DASH Tasti-Crisp Electric Air Fryer Oven in black, with the crisper basket pulled out, filled with golden-brown french fries.

# FAMILY SIZED!



Image 2: Diagram highlighting key features: AirCrisp Technology, Temperature Control & Auto Shutoff Timer, Cool Touch Handle, and 6 Quart Crisper Drawer.

## Components:

- Main Unit (Housing)
- Crisper Basket
- Crisper Plate (removable, non-stick)
- Temperature Control Dial
- Timer Dial with Auto Shut-Off

## 3. SETUP AND FIRST USE

### Unpacking:

1. Carefully remove all packaging materials, including any stickers or labels.
2. Inspect the appliance for any damage. Do not use if damaged.

### Initial Cleaning:

1. Wash the Crisper Basket and Crisper Plate with warm, soapy water using a non-abrasive sponge. Rinse thoroughly and dry completely.
2. Wipe the exterior of the Main Unit with a damp cloth. Do not immerse the Main Unit in water.

### Placement:

1. Place the Air Fryer on a stable, heat-resistant, and level surface.
2. Ensure there is at least 6 inches of clear space around the back and sides of the appliance for proper ventilation.
3. Do not place the appliance directly against a wall or under cabinets during operation.

### First Use (Burn-Off):

It is recommended to run the Air Fryer empty for 10-15 minutes before its first use to eliminate any

manufacturing odors.

1. Plug the appliance into a grounded electrical outlet.
2. Set the Temperature Control Dial to 400°F (200°C).
3. Set the Timer Dial to 15 minutes. The appliance will turn on.
4. After 15 minutes, the timer will ding, and the appliance will automatically shut off.
5. Allow the unit to cool completely before proceeding with cooking.

## 4. OPERATING INSTRUCTIONS

### Preheating the Air Fryer:

Preheating is recommended for optimal cooking results, especially for items that require a crispy exterior.

1. Plug the Air Fryer into a grounded electrical outlet.
2. Pull out the Crisper Basket. Ensure the Crisper Plate is properly seated inside.
3. Set the Temperature Control Dial to the desired cooking temperature.
4. Set the Timer Dial to 3-5 minutes for preheating. The appliance will begin heating.
5. Once the timer dings, the Air Fryer is preheated and ready for food.

### Cooking with the Air Fryer:

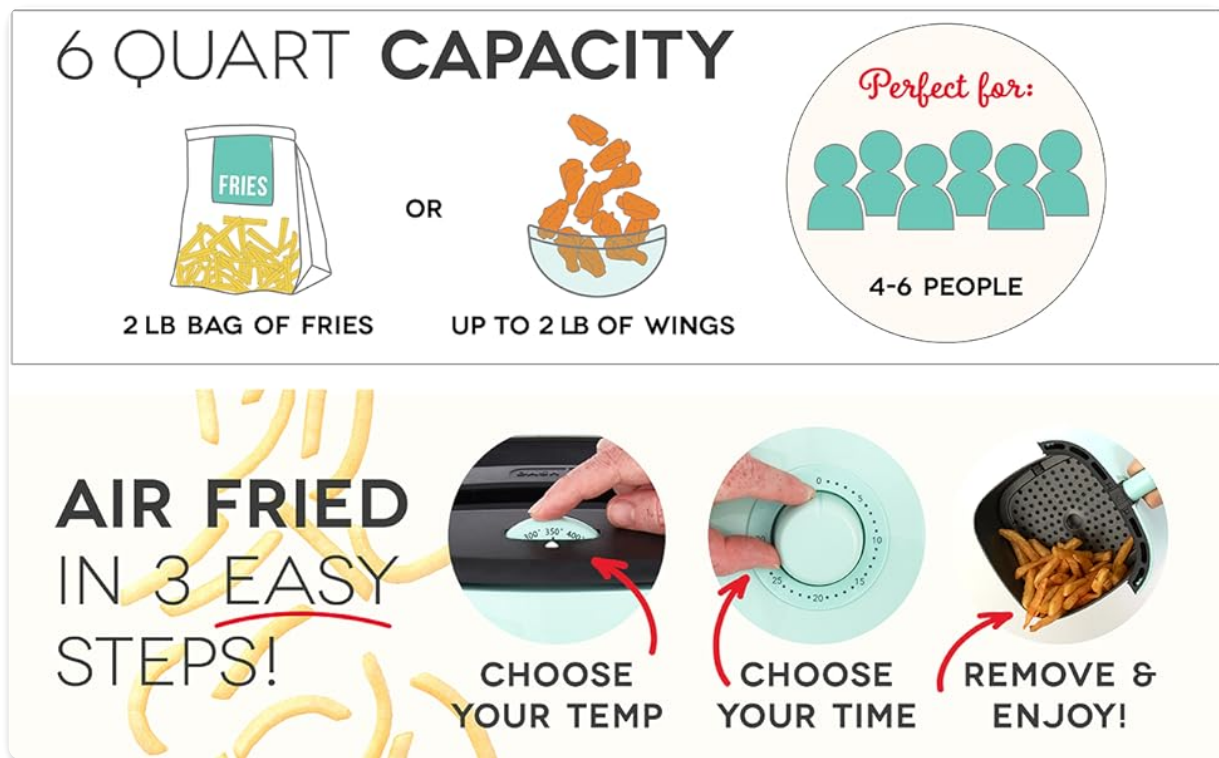


Image 3: Visual guide showing the three steps for air frying: choosing temperature, choosing time, and removing food.

1. After preheating (or if not preheating), pull out the Crisper Basket.
2. Place your food onto the Crisper Plate inside the basket. Do not overfill the basket; ensure air can circulate around the food for best results.
3. Slide the Crisper Basket back into the Main Unit until it clicks securely into place.
4. Set the Temperature Control Dial to the desired cooking temperature (up to 400°F).
5. Set the Timer Dial to the recommended cooking time (up to 30 minutes). The appliance will begin cooking.
6. For even cooking and crispiness, some foods may require shaking or tossing the contents of the



basket halfway through the cooking cycle. To do this, carefully pull out the basket using the cool-touch handle, shake or toss the food, and reinsert the basket. The Air Fryer will resume cooking.

7. When the timer dings, the cooking cycle is complete, and the appliance will automatically shut off.
8. Carefully pull out the Crisper Basket. Use tongs or a spatula to remove the cooked food. Be cautious of hot steam.
9. Unplug the appliance from the wall outlet after use.

### Cooking Capacity:

## LARGE CAPACITY



**CHICKEN**



**FRENCH FRIES**



**PIGS IN A BLANKET**



**BRUSSEL SPROUTS**

Image 4: Examples of food items that can be cooked in the 6-quart capacity basket, including a whole chicken, french fries, pigs in a blanket, and brussel sprouts.

The 6-quart capacity is suitable for family-sized portions. It can accommodate approximately 2 lbs of french fries or a small whole chicken.

## 5. CLEANING AND MAINTENANCE

Regular cleaning ensures optimal performance and extends the life of your Air Fryer.

### Before Cleaning:

1. Always unplug the Air Fryer from the power outlet.

2. Allow the appliance to cool down completely before handling any parts.

### Cleaning the Crisper Basket and Crisper Plate:

- The Crisper Basket and Crisper Plate are **dishwasher safe**.
- Alternatively, they can be hand washed with warm, soapy water and a non-abrasive sponge.
- For stubborn food residue, soak the basket and plate in warm, soapy water for about 10-15 minutes before cleaning.
- Ensure all parts are thoroughly rinsed and dried before reassembling or storing.

### Cleaning the Main Unit:

- Wipe the exterior of the Main Unit with a soft, damp cloth.
- Do not use abrasive cleaners or scouring pads, as these can damage the finish.
- Never immerse the Main Unit in water or any other liquid.
- Clean the interior of the Air Fryer with a damp cloth if necessary, ensuring no moisture enters the electrical components.

### Storage:

Ensure the appliance is clean, dry, and completely cool before storing. Store in a dry place.



Image 5: The compact design of the air fryer, showing its dimensions (approximately 14 inches high, 12 inches wide) and how it can be easily stored in a kitchen cabinet.

## 6. TROUBLESHOOTING

If you encounter issues with your Air Fryer, refer to the following common problems and solutions:

Problem	Possible Cause	Solution
Air Fryer does not turn on.	Appliance is not plugged in.	Ensure the power cord is securely plugged into a grounded electrical outlet.
	Timer is not set.	Turn the Timer Dial to the desired cooking time.
Food is not crispy.	Basket is overcrowded.	Cook food in smaller batches to allow for better air circulation.
	Temperature or time settings are incorrect.	Adjust temperature and/or time as needed. Refer to recipes or cooking guides.
	Food not shaken or tossed.	Shake or toss the food in the basket halfway through cooking.
White smoke comes from the appliance.	Excess oil or grease from food.	Clean the Crisper Basket and Crisper Plate thoroughly after each use. For fatty foods, drain excess grease during cooking.
	Food residue in the heating element.	Unplug and allow to cool. Carefully clean the heating element with a soft brush.
Appliance smells during first use.	Manufacturing residues burning off.	This is normal. Run the appliance empty for 10-15 minutes at 400°F before first use. Ensure good ventilation.

## 7. SPECIFICATIONS

Detailed technical specifications for the DASH Tasti-Crisp Electric Air Fryer Oven.

Feature	Specification
Model Number	DFAF755GBBK01
Brand	DASH
Capacity	6 Quarts
Color	Black
Wattage	1700 Watts
Voltage	110 Volts
Control Method	Mechanical Knob (Analog)
Max Temperature Setting	400°F (200°C)

Feature	Specification
Special Features	Automatic Shut-Off, Non-Stick Crisper Plate, Timer
Product Dimensions (D x W x H)	10.8" x 13.5" x 12.9"
Item Weight	10 Pounds
Material	Aluminum, Plastic, Polypropylene (PP)
Air Frying Technology	AirCrisp®
Dishwasher Safe Parts	Crisper Basket, Crisper Plate
UPC	810051856330

## 8. WARRANTY AND SUPPORT

### Manufacturer's Warranty:

DASH products are manufactured to high-quality standards. For specific warranty details, including duration and coverage, please refer to the warranty information provided with your purchase documentation or visit the official DASH website. Keep your proof of purchase for warranty claims.

### Customer Support:

For technical assistance, troubleshooting beyond this manual, or inquiries regarding parts and service, please contact DASH customer support. Contact information can typically be found on the manufacturer's website or in your product packaging.

You may also refer to the official User Manual (PDF) for additional information [Download User Manual \(PDF\)](#)

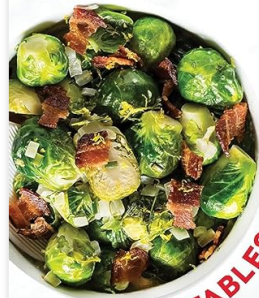
## 9. ADDITIONAL RESOURCES

While this manual provides essential instructions, you may find additional cooking tips and recipes from the manufacturer or online resources.



# So VERSATILE

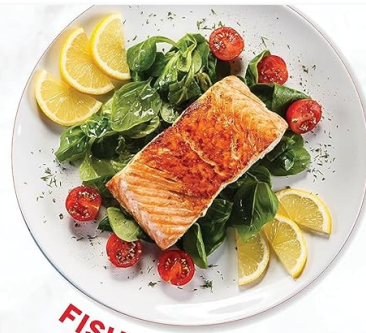
Tasti-Crisp™ Air Fryer  
makes all this and *more!*



VEGETABLES



CHICKEN



FISH



POTATOES



DESSERTS



ONION RINGS



WINGS

Image 6: A collage showcasing the versatility of the Tasti-Crisp Air Fryer, capable of preparing various dishes including fish, potatoes, chicken, vegetables, desserts, onion rings, and wings.





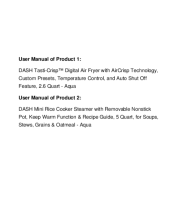
No official product videos were available for embedding in this manual.

## Related Documents - DFAF755GBBK01



### [Dash DCAF260 Digital Tasti-Crisp Air Fryer: Instruction Manual & Recipe Guide](#)

Comprehensive instruction manual and recipe guide for the Dash DCAF260 Digital Tasti-Crisp Air Fryer. Learn how to safely operate, maintain, and use this kitchen appliance for delicious air-fried meals.

 <p><b>DASH</b> DIGITAL <b>TASTI-CRISP™ AIR FRYER</b> Instruction Manual / Recipe Guide</p>	<p><a href="#">Dash Digital Tasti-Crisp Air Fryer DCAF260: Instruction Manual &amp; Recipe Guide</a></p> <p>Explore the Dash Digital Tasti-Crisp Air Fryer (Model DCAF260) with this comprehensive instruction manual and recipe guide. Learn about important safety precautions, parts and features, usage instructions, cleaning, troubleshooting, and discover delicious recipes.</p>
 <p><b>DASH</b> DIGITAL <b>TASTI-CRISP™ AIR FRYER</b> Instruction Manual / Recipe Guide</p>	<p><a href="#">Dash Tasti-Crisp™ Digital Air Fryer Instruction Manual and Recipe Guide</a></p> <p>Comprehensive guide for the Dash Tasti-Crisp™ Digital Air Fryer, including important safety information, parts and features, operating instructions, tips and tricks, temperature charts, cleaning and maintenance, troubleshooting, and a variety of recipes.</p>
 <p><b>WW</b> <b>Tasti-Crisp™ Air Fryer</b> Instruction Manual / Recipe Guide</p>	<p><a href="#">WW by Dash Tasti-Crisp Air Fryer: Instruction Manual &amp; Recipe Guide</a></p> <p>Comprehensive guide for the WW by Dash Tasti-Crisp Air Fryer, including safety instructions, usage tips, troubleshooting, and a collection of delicious recipes.</p>
 <p><b>DASH</b> <b>TASTI-CRISP™ EXPRESS DIGITAL AIR FRYER</b> Instruction Manual / Recipe Guide</p>	<p><a href="#">Dash Tasti-Crisp Express Digital Air Fryer: Instruction Manual &amp; Recipe Guide</a></p> <p>Comprehensive instruction manual and recipe guide for the Dash Tasti-Crisp Express Digital Air Fryer (Model #DCAF220), covering setup, usage, safety, troubleshooting, and delicious recipes.</p>
 <p><b>User Manual of Product 1:</b> Dash Tasti-Crisp™ Digital Air Fryer with AirCrisp Technology. Custom Presets, Temperature Controls, and Auto Shut Off Features. 5.8 Quart. Aqua.</p> <p><b>User Manual of Product 2:</b> Dash Mini Rice Cooker Steamer with Removable Nonstick Pot, Keep Warm Function &amp; Recipe Guide. 5-Quart. for Soups, Stews, Grains &amp; Coldmeal. Aqua.</p>	<p><a href="#">DASH Air Fryer &amp; Rice Cooker User Manual and Recipe Guide</a></p> <p>Comprehensive user manual and recipe guide for the DASH Tasti-Crisp™ Digital Air Fryer (DCAF260) and the DASH Mini Rice Cooker Steamer (DRCM200), featuring setup, operation, maintenance, troubleshooting, and recipes.</p>