



Manuals.plus /

› oneisall /

› oneisall Dog Clippers with Double Blades, Model C61 - Instruction Manual

oneisall C61

oneisall Dog Clippers with Double Blades, Model C61 - Instruction Manual

Cordless Small Pet Hair Grooming Trimmer for Paws, Eyes, Ears, Face, and Rump

INTRODUCTION

This instruction manual provides detailed guidance for the safe and effective use of your oneisall Dog Clippers, Model C61. Please read this manual thoroughly before operating the device and retain it for future reference. This trimmer is designed for precise grooming of small areas on pets, including paws, eyes, ears, face, and rump.

PACKAGE CONTENTS

Upon unpacking, please ensure all items listed below are present and in good condition:

- 1x oneisall Dog Clipper (main unit)
- 1x Small Blade
- 1x Middle Blade
- 1x Cleaning Brush
- 1x USB Charging Cord
- 1x Blade Oil
- 1x User Manual (this document)

What's in the Box?



● 1 x Paw Trimmer

● 1 x Blade Brush

● 1 x Replaceable Blade

● 1 x Blade Oil

● 1 x USB Cable

● 1 x User Manual

Image: The complete package contents of the oneisall Dog Clippers, Model C61, laid out clearly.

SETUP

Charging the Device

The oneisall Dog Clipper features a built-in rechargeable battery. Before first use, fully charge the device.

1. Connect the USB charging cord to the charging port on the clipper.
2. Plug the other end of the USB cord into a compatible USB power adapter (not included) or a computer USB port.
3. The indicator light will illuminate during charging.
4. A full charge takes approximately 2 hours and provides about 2 hours of continuous use.

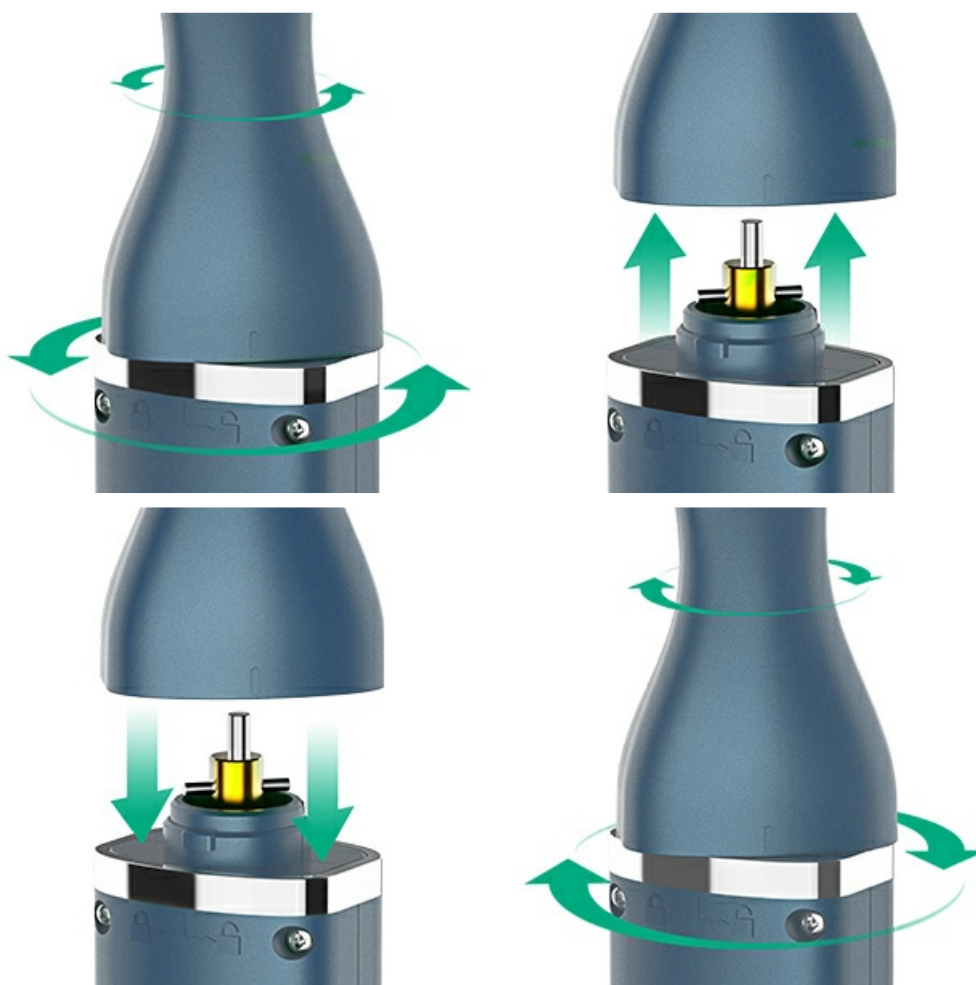


Image: The onesall Dog Clipper connected to a USB charging cable, illustrating the charging process.

Attaching/Detaching Blades

The clipper comes with two interchangeable blades (small and middle) for different grooming needs.

- To detach: Hold the clipper firmly and twist the blade head counter-clockwise until it unlocks, then pull it off.
- To attach: Align the desired blade head with the clipper body, push it down, and twist clockwise until it locks securely into place.



Images: A sequence of diagrams illustrating the steps to correctly attach and detach the clipper blades.

OPERATING INSTRUCTIONS

Powering On/Off and Speed Settings

The clipper features a single power button for ease of use and two speed settings.

- Press the power button once to turn on the clipper at the lower speed (5000 RPM).
- Press the power button a second time to switch to the higher speed (5700 RPM).
- Press the power button a third time to turn off the clipper.



Image: The power button and speed indicators on the clipper, demonstrating the two available speeds.

Grooming Tips

For optimal results and pet comfort, follow these guidelines:

- **Low Noise Design:** The clipper operates at approximately 60 dB, ensuring a comfortable grooming experience for your pet.
- **Safe and Sharp Blades:** The stainless steel fixed blade provides excellent cutting performance. Use the small blade for delicate areas like paws, eyes, and ears.
- **R-Shaped Edge & Skin-Safe:** The R-shaped edge design helps prevent accidental cuts or scratches to your pet's skin.
- **Trimming Paws:** Gently hold your pet's paw and carefully trim the hair between the paw pads.
- **Trimming Face/Ears/Rump:** Use the appropriate blade size and carefully trim hair in these sensitive areas, always being mindful of your pet's skin.

2 X
LONG

Lasting Power



Data based on oneisall internal lab testing

Image: Close-up of the clipper blade highlighting its R-shaped edge and skin-safe design for pet safety.

Quiet, Calm Grooming



80dB
Hairdryer

70dB
Conditioner

50 dB
oneisall

Image: Visual representation of the low noise level (50 dB) of the oneisall Dog Clipper during operation, ensuring a calm grooming experience.

Your browser does not support the video tag.

Video: A demonstration of using the oneisall Dog Clipper for paw trimming on a dog, showcasing its ease of use and quiet operation.

MAINTENANCE

Cleaning the Blades

Regular cleaning ensures optimal performance and longevity of your clipper.

- The blade part can be removed for easy cleaning.
- After each use, detach the blade and use the provided cleaning brush to remove any trapped hair.
- The blade can be washed directly under running water. Ensure it is completely dry before reattaching.



Image: The detachable blade of the oneisall Dog Clipper being rinsed under water for thorough cleaning.

Lubricating the Blades

Apply a few drops of the included blade oil to the blades periodically to maintain smooth operation and prevent rust.

- Ensure the clipper is turned off before applying oil.
- Apply 1-2 drops of oil to the moving parts of the blade.
- Turn on the clipper for a few seconds to distribute the oil evenly.

TROUBLESHOOTING

No specific troubleshooting steps are provided in the product information. If you encounter issues, please refer to the Warranty and Support section for assistance.

SPECIFICATIONS

Feature	Detail
Model Number	C61
Brand	oneisall
Blade Material	Stainless Steel
Power Source	Battery Powered (Rechargeable via USB)
Charging Time	Approx. 2 hours
Operating Time	Approx. 2 hours (after full charge)
Noise Level	Approx. 60 dB
Item Weight	0.22 Kilograms
Package Dimensions	7.8 x 4.92 x 1.73 inches

WARRANTY AND SUPPORT

Your oneisall Dog Clipper, Model C61, comes with a **2-Year Warranty**. For any product inquiries, technical assistance, or warranty claims, please contact oneisall customer support. They offer **24/7 Support** to ensure your satisfaction.

For further assistance, please visit the oneisall Store on Amazon.