

EAST OAK B09VX3F92Y

EAST OAK 44-inch Propane Fire Pit Table Instruction Manual

Model: B09VX3F92Y

1. INTRODUCTION AND OVERVIEW

This manual provides essential information for the safe and efficient operation of your EAST OAK 44-inch Propane Fire Pit Table. Designed for outdoor use, this fire pit table offers a 60,000 BTU heat output, an aluminum frame, a tempered glass tabletop, and an H-type burner. It is CSA Listed for safety and includes a wind guard, fire glass, and a lid.

- **High Heat Output:** Equipped with an H-type burner, this propane fire pit table delivers 60,000 BTU of heat, providing warmth for outdoor gatherings.
- **Durable Construction:** Features a 100% aluminum frame (rust-resistant), tempered glass tabletop, 304 stainless steel burner, and UV-protected PE rattan covering to prevent cracking or discoloration.
- **Ample Legroom:** The design includes heightened and widened leg space for comfortable seating.
- **Integrated Ignition:** One-piece fast ignition and adjustable flame control are managed by a single push-and-turn knob, requiring no batteries or lighters.
- **Complete Kit:** Includes a glass wind guard, a removable anti-rust lid, and 7 lbs of brown fire glass.

2. SAFETY INFORMATION

- For outdoor use only.
- Children and pets must be supervised when near this product.
- It is prohibited to use any conversion kit to connect to natural gas.
- Ensure the fire pit is placed on a stable, non-combustible surface.
- Keep flammable materials away from the fire pit.
- Do not touch hot surfaces. Allow the unit to cool completely before handling or covering.

3. PACKAGE CONTENTS

Your EAST OAK 44-inch Propane Fire Pit Table is delivered in two boxes. Please ensure all components are present before beginning assembly.

- 1 x Fire pit table (Box 1 of 2)
- 1 x Glass wind guard (Box 2 of 2)
- 1 x Removable anti-rust lid (Box 1 of 2)
- 1 x User manual (Box 1 of 2)
- 2 x Accessories bag (Box 1 of 2)
- 7 pounds fire glass (Box 1 of 2)

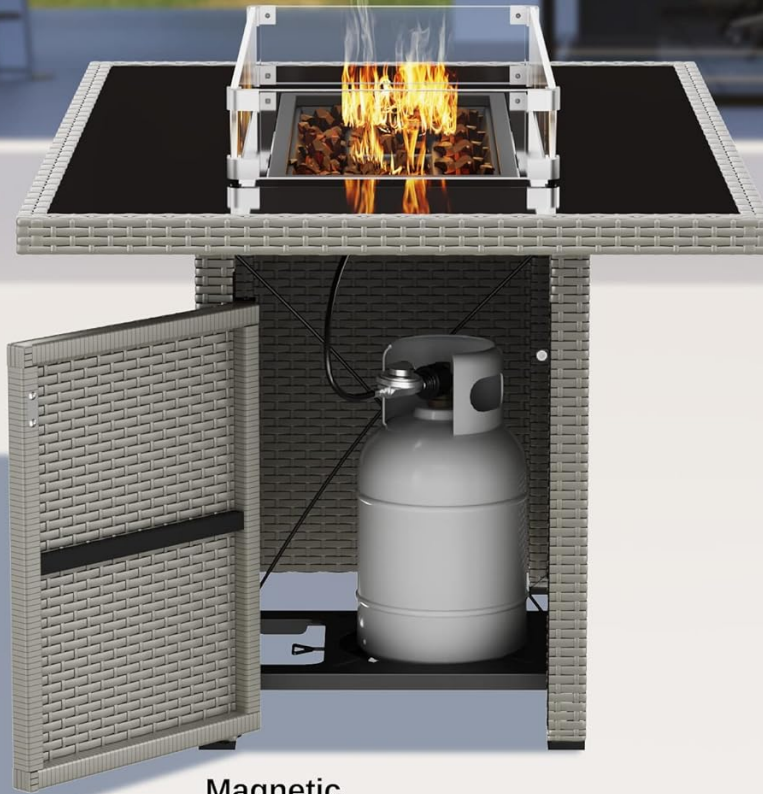
4. SETUP AND ASSEMBLY

Assembly typically takes less than an hour. It is recommended to assemble the main table structure upside down for easier access to connection points.

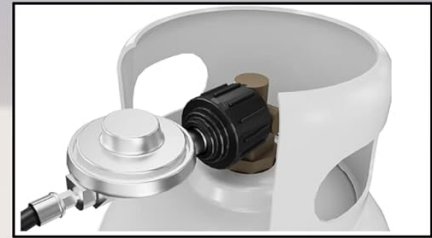
1. **Assemble the Base:** Connect the side panels of the fire pit table using the provided screws and brackets. Ensure all connections are secure.
2. **Install Gas Tank Support:** Attach the bottom support for the propane tank inside the base. This piece is typically screwed in from the underside.
3. **Orient the Burner Assembly:** The burner assembly may be shipped in a vertical position. Remove the silver screws, carefully rotate the burner assembly 90 degrees to a horizontal position, and reattach it securely.
4. **Flip the Table:** With the base and burner assembly secured, carefully flip the table right-side up.
5. **Connect Propane Tank:** Open the magnetic door on the side of the table. Place a standard 20 lb liquid propane (LPG) cylinder on the support tray. Secure the cylinder using the retainer bolt. Connect the gas line to the LPG cylinder nozzle and fasten with a coupler. Ensure the connection is tight.
6. **Add Fire Glass:** Carefully pour the 7 lbs of brown fire glass into the burner area, distributing it evenly around the H-type burner. It is recommended to wear gloves when handling fire glass due to sharp edges.
7. **Assemble Wind Guard:** The wind guard consists of four plexiglass panels and corner brackets. Attach the panels using the provided brackets and screws. Insert the rubber pegs into the bottom holes of the brackets to allow the wind guard to stand securely on the glass tabletop.

Hideaway Tank Storage

Clever design ensures your propane tank is easy to replace.



**Magnetic
Opening Door**



Overflow valve safety device

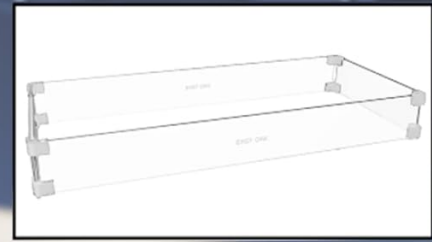
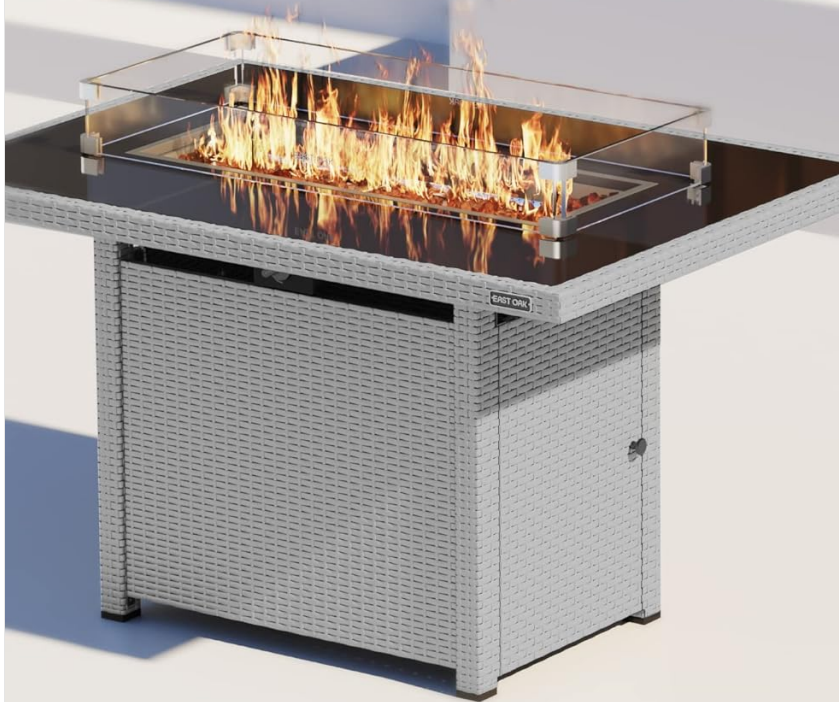


**Knob for securing
the gas tank**

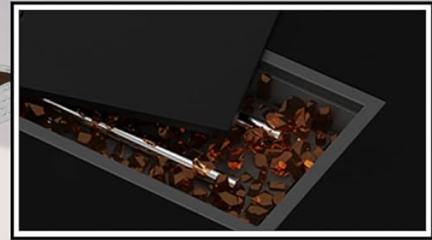
Figure 4.1: Hideaway Tank Storage. The magnetic door provides easy access to the propane tank compartment, which includes a tray and retainer bolt for securing the tank.

Complete Accessories

Packaged with everything you need.



Glass Wind Guard



Removable Anti-Rust Lid



7lbs Glass Stone

Figure 4.2: Complete Accessories. The fire pit table comes with a glass wind guard, a removable anti-rust lid, and 7 lbs of brown glass stone.

5. OPERATING INSTRUCTIONS

1. **Open Gas Tank Valve:** Slowly turn the valve on the propane cylinder counter-clockwise to open the gas flow.
2. **Ignite the Fire Pit:** Locate the control knob on the side of the fire pit table. Press and turn the knob counter-clockwise to the "ON" position. For first-time use, it may be necessary to press the switch a few times to initiate ignition.
3. **Adjust Flame:** Once ignited, continue turning the knob to adjust the flame height to your desired level.
4. **Turn Off:** To turn off the appliance, turn the control knob clockwise to the "OFF" position. Turn off the cylinder valve and disconnect the regulator when the fire table is not in use.

Convenient Integrated Piezo Ignition

Ensures you a safe quick start and variable flame control.

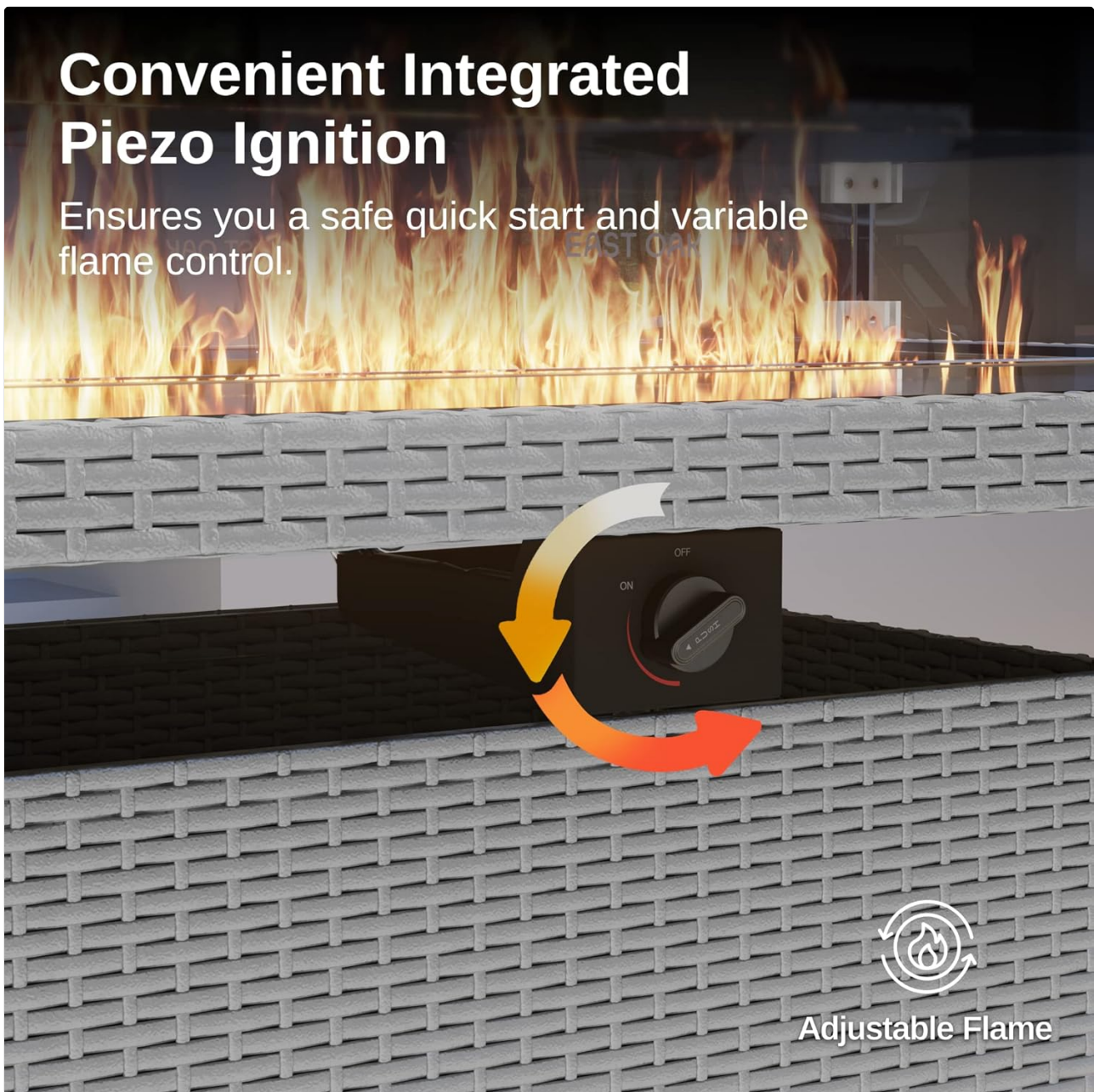


Figure 5.1: Integrated Piezo Ignition. The push-and-turn knob allows for quick start and variable flame control.

Video 5.1: EAST OAK Fire Pit Table - Operation Guide. This video demonstrates the steps for operating the fire pit table, including ignition and flame adjustment.

6. MAINTENANCE

- Keep the removable anti-rust lid on the fire pit when not in use to prevent rain, leaves, and debris from entering the burner area.
- Clean the tempered glass tabletop with a soft cloth and mild glass cleaner.
- Periodically inspect the gas hose and connections for any signs of wear or leaks.
- Ensure the PE rattan covering is clean and free from debris to maintain its UV protection.

7. SPECIFICATIONS

Feature	Detail
Material	Aluminum, PE Rattan
Product Dimensions (D x W x H)	32"D x 44"W x 25.6"H
Style	Modern
Brand	EAST OAK
Finish Type	Polished
Shape	Rectangular
Item Weight	47.4 Pounds
Fuel Type	Liquefied Petroleum Gas
Color	Gray
UPC	850039974465
Manufacturer	EAST OAK
Included Components	Fire pit table, Glass wind guard, Removable anti-rust lid, User manual, Accessories bag, 7 pound fire glass

8. WARRANTY AND SUPPORT

All EAST OAK products are covered by a 3-year customer satisfaction warranty. If you have any questions or concerns, please contact our satisfaction team first.

Manufacturer Contact Information:

USA Phone: 1-833-EAST-OAK (1-833-327-8625)

Hours: Monday-Friday, 9:00 am - 5:00 pm PST/PDT

9. VISUAL GUIDE



Figure 9.1: The EAST OAK 44-inch Propane Fire Pit Table, showcasing its design and included wind guard.

Powerful 60,000 BTU Heat Output

Make the party atmosphere "warm-up" quickly.



Figure 9.2: Enjoying the 60,000 BTU heat output of the fire pit table with friends.

Ample Legroom for More Convenience

Heightened and widened the space under the fire table



Figure 9.3: The heightened and widened leg space ensures comfort for users.

UV Protected Rattan and All Aluminum Frame



UV Protected



Anti-Rust

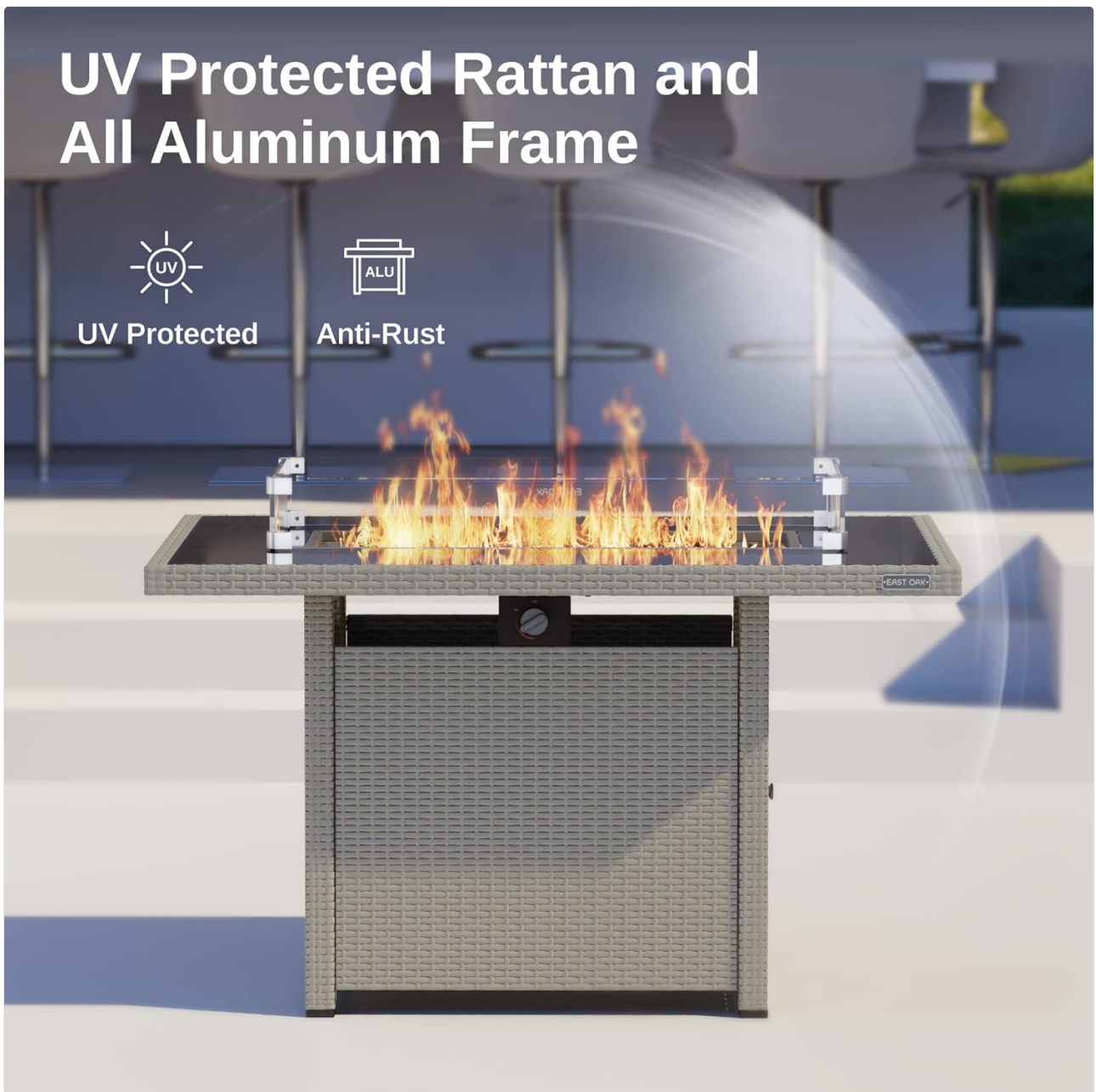


Figure 9.4: The durable aluminum frame and UV-protected rattan ensure longevity and resistance to outdoor elements.

Gas fire pit table and dining table two in one

When not burning, place the lid
and enjoy your patio dinner time.



Figure 9.5: The versatile design allows the fire pit table to be used as a dining table when the lid is in place.

Video 9.1: EAST OAK 60,000 BTU Propane Fire Pit Table Gas Firepit. This video provides a general overview of the fire pit table and its features.

Video 9.2: EAST OAK 44" Propane Fire Pit Table, 60,000 BTU. This video highlights the features and benefits of the 44-inch fire pit table.

Video 9.3: Up close 360 look at the East Oak Propane Fire Pit Table. A detailed 360-degree view of the fire pit table, showcasing its design and components.