



Manuals.plus /

- › GA.MA ITALY PROFESSIONAL /
- › GA.MA Italy Absolute Ultra T-Blade Trimmer Instruction Manual

GA.MA ITALY PROFESSIONAL Absolute Ultra T-Blade Trimmer

GA.MA Italy Absolute Ultra T-Blade Trimmer Instruction Manual

[Introduction](#) [Safety Information](#) [What's Included](#) [Setup](#) [Operating](#)
[Instructions](#) [Maintenance](#) [Specifications](#) [Troubleshooting](#) [Warranty & Support](#)

1. INTRODUCTION

The GA.MA Italy Absolute Ultra T-Blade Trimmer is engineered for precision grooming. It features a powerful 10,000 RPM motor and a DLC-coated stainless steel T-blade, designed for ultra-close, zero-gap detailing with reduced friction and enhanced durability. This trimmer offers both corded and cordless operation, providing flexibility for professional and personal use.

Key Features:

- **Powerful 10,000 RPM Motor:** Ultra-high-speed magnetic motor delivers smooth, precise outlining with professional-grade power and minimal resistance or vibration.
- **DLC-Coated Stainless Steel Blade:** T-blade with diamond-like carbon coating ensures maximum sharpness, reduced friction, and long-lasting performance.
- **Corded or Cordless Operation:** Lithium-ion battery offers 80 minutes of runtime on a rapid 70-minute charge, or use plugged in for nonstop professional grooming.
- **Ultra-Precise Cutting Adjustments:** Achieve zero-gap finishes with cutting range from 0.0039" to 0.047" and 3 guide combs: 1/2", 1", and 1-1/2" for added flexibility.
- **Designed for Barbers:** Features extra-long 118.1" cord, charging base, maintenance tools, and ergonomic body built for long hours of detailing and outlining.

2. SAFETY INFORMATION

Always unplug the trimmer before cleaning or storing. Keep it away from water sources. Avoid using it on infants or near the eyes. Always use the guard combs when trimming to prevent skin irritation or injury. Follow the recommended maintenance procedures using the provided cleaning kit. Always supervise children when using the trimmer.

3. WHAT'S INCLUDED

Your GA.MA Italy Absolute Ultra T-Blade Trimmer package includes the following items:

- GA.MA Italy Absolute Ultra T-Blade Trimmer
- Charging Base
- 3 Guide Combs (1/2", 1", 1-1/2")
- Lubricating Oil
- Cleaning Brush
- Extra-long 118.1" Power Cord

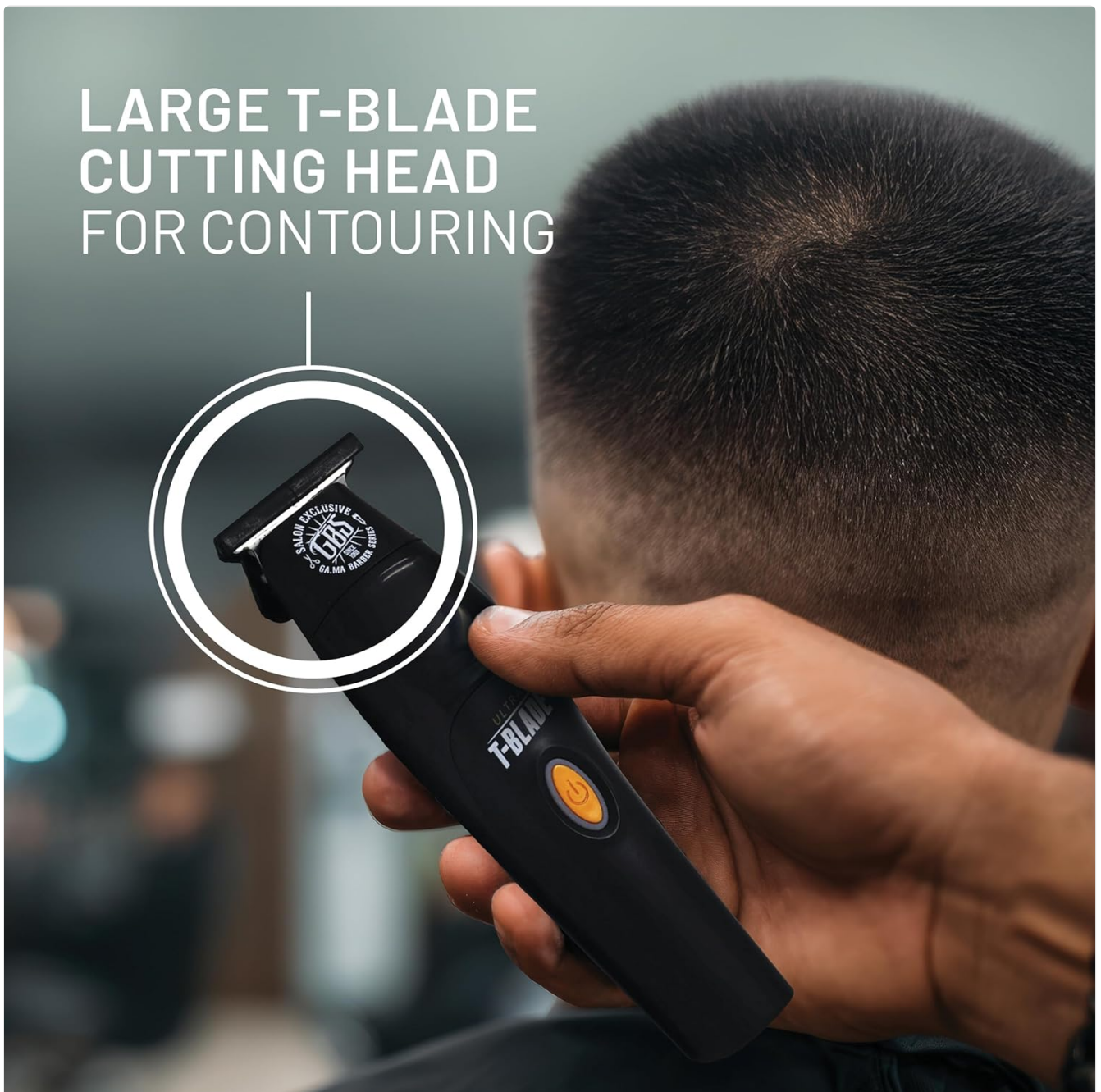


Image: The GA.MA Italy Absolute Ultra T-Blade Trimmer displayed with its charging base, three guide combs, cleaning brush, lubricating oil, and power cord.



BLADE DIAMOND COATING

Maximum sharpness durability and less friction between blades.

Image: Close-up view of the GA.MA Italy Absolute Ultra T-Blade Trimmer, highlighting the T-blade and several comb attachments.

4. SETUP

4.1 Initial Charge

Before first use, fully charge your trimmer. Connect the power cord to the charging base and plug it into a suitable power outlet. Place the trimmer onto the charging base. A rapid 70-minute charge provides up to 80 minutes of cordless runtime.

4.2 Blade Oiling

Apply a few drops of the provided lubricating oil to the blades before each use. This ensures smooth operation, reduces friction, and prolongs blade life. Turn on the trimmer for a few seconds to distribute the oil evenly.

5. OPERATING INSTRUCTIONS

5.1 Powering On/Off

Press the power button to turn the trimmer on or off. The powerful 10,000 RPM motor provides immediate, consistent performance.

5.2 Corded and Cordless Use

The trimmer can be used cordlessly after charging, offering up to 80 minutes of runtime. For continuous operation or if the battery is low, connect the power cord directly to the trimmer for corded use.

5.3 Attaching Guide Combs

Select the desired guide comb (1/2", 1", or 1-1/2") for your preferred cutting length. Align the comb with the trimmer blade and snap it securely into place. Ensure the comb is firmly attached before use.

5.4 Blade Adjustment (Zero-Gap)

The DLC-coated T-blade allows for ultra-precise cutting adjustments, achieving zero-gap finishes. The cutting range can be adjusted from 0.0039" to 0.047". Refer to the detailed instructions in the included manual for precise blade adjustment procedures to achieve your desired closeness.



Made with the highest quality materials for maximum precision and durability.

Image: A detailed view of the large T-blade cutting head, ideal for contouring and precise lines.



Image: Visual representation of the blade diamond coating, emphasizing maximum sharpness and reduced friction.

6. MAINTENANCE

6.1 Cleaning the Trimmer

After each use, turn off and unplug the trimmer. Remove any attached guide combs. Use the provided cleaning brush to remove loose hairs from the blades and the trimmer body. For thorough cleaning, the blades can be rinsed under water, ensuring the trimmer body remains dry.

6.2 Oiling the Blades

Regular oiling is crucial for optimal performance and longevity. Apply 1-2 drops of the included lubricating oil to the blades before or after each use. Turn the trimmer on for a few seconds to allow the oil to spread evenly across the blades.

6.3 Storage

Store the trimmer in a dry place, away from direct sunlight and moisture. Ensure it is fully charged before storing for extended periods to maintain battery health.

7. SPECIFICATIONS

Feature	Detail
Brand	GA.MA ITALY PROFESSIONAL
Model	Absolute Ultra T-Blade Trimmer
Motor Speed	10,000 RPM
Blade Type	DLC-Coated Stainless Steel T-Blade
Cutting Adjustment	0.0039" to 0.047" (Zero-Gap)
Guide Combs	3 included (1/2", 1", 1-1/2")
Battery Type	Lithium-ion
Runtime	Up to 80 minutes
Charge Time	70 minutes (rapid charge)
Operation	Corded or Cordless
Cord Length	118.1" (9.85 ft)
Item Weight	0.79 Kilograms
Color	Black
Recommended Uses	Barber, Professional, Salon, Trimming

8. TROUBLESHOOTING

If you encounter any issues with your GA.MA Italy Absolute Ultra T-Blade Trimmer, please consider the following

common solutions:

- **Trimmer not turning on:** Ensure the battery is charged. If using corded, check the power connection.
- **Reduced cutting performance:** Clean the blades thoroughly and apply lubricating oil. Ensure no hair is trapped between the blades.
- **Excessive noise or vibration:** This may indicate a need for blade oiling or cleaning. If the issue persists, contact customer support.
- **Battery not charging:** Verify the power cord and charging base are correctly connected and plugged into a working outlet.

For further assistance, refer to the full instruction manual or contact customer support.

9. WARRANTY & SUPPORT

For detailed warranty information and customer support, please refer to the documentation included with your product or visit the official GA.MA Italy Professional website. Protection plans may also be available for extended coverage.