

## Manuals+

[Q & A](#) | [Deep Search](#) | [Upload](#)

manuals.plus /

› [VLOXO](#) /

› [VLOXO Cordless Electric Scissors Model AT001 User Manual](#)

## VLOXO AT001

# VLOXO Cordless Electric Scissors Model AT001 User Manual

Comprehensive instructions for the VLOXO 4.2V Cordless Electric Scissors, Model AT001, covering setup, operation, maintenance, and safety.

## 1. INTRODUCTION

---

Thank you for choosing the VLOXO Cordless Electric Scissors, Model AT001. This tool is designed for efficient cutting of various materials such as cardboard, leather, plastic mats, carpets, and felt. Please read this manual thoroughly before use to ensure safe and optimal operation.

### Package Contents

- Cordless Electric Scissor Unit (1)
- TYPE-C Charge Cable (1)
- Storage Case (1)
- User Manual (1)



Image 1.1: The VLOXO Cordless Electric Scissors, including the main unit, USB-C charging cable, and a protective storage case.

# PACKAGE INCLUDING



Image 1.2: A visual representation of the items included in the package, along with the dimensions of the tool and case.

## 2. SAFETY INFORMATION

Always observe the following safety precautions to prevent injury or damage to the tool.

- Keep hands and fingers away from the rotating blade during operation.
- Ensure the safety lock switch is engaged when the tool is not in use to prevent accidental activation.
- Do not use the tool for cutting fabric or for precision cuts, as it is not designed for these applications.
- Do not use the tool while it is charging.
- Store the tool in its storage case when not in use, out of reach of children.
- Wear appropriate personal protective equipment, such as safety glasses, when operating the tool.
- Do not attempt to cut materials thicker than 1/4 inch (6.35 mm).
- Keep the blade guard area clean to ensure proper sharpening and operation.



Self Sharpening Blade

Safety Lock Switch

**KEEP SAFE &  
KEEP SHARPENING**

Image 2.1: Detail view highlighting the self-sharpening blade mechanism and the safety lock switch on the VLOXO electric scissors.

## TOUCH THE BLADE CORRECTLY

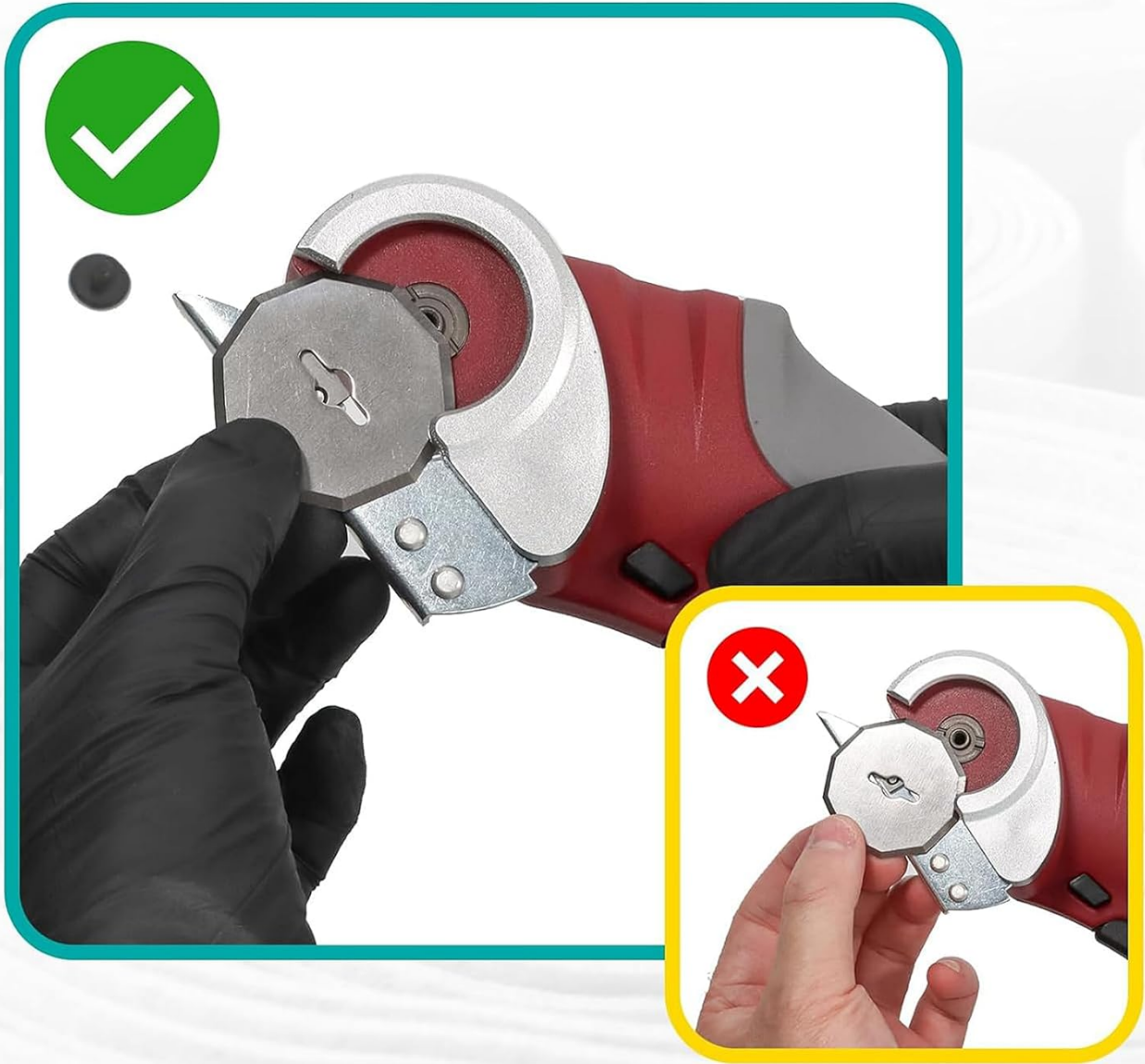


Image 2.2: Guidance on correctly touching the blade, emphasizing safety during handling or cleaning.

### 3. SETUP

#### Charging the Battery

1. Locate the TYPE-C charging port on the tool.
2. Connect the provided TYPE-C charge cable to the tool and a compatible USB power adapter (not included).
3. The charging indicator light will illuminate.
4. Allow the tool to charge fully before first use. Charging time may vary.
5. Disconnect the charger once fully charged.

**Important: Do not operate the electric scissors while charging.**

If the tool is not used for an extended period, charge it regularly to maintain battery health.

# PORTABLE TYPE-C CHARGING



USB Type-C  
Charge



4.2V Battery

## Do not use when charging

If the item is not used for a long time, please charge it regularly to maintain the battery.



Image 3.1: The electric scissors being charged via its USB Type-C port, connected to a power source.

## 4. OPERATING INSTRUCTIONS

### Activating the Tool

The VLOXO electric scissors feature a safety lock-off mechanism to prevent unintended activation.

1. **Press the Safety Lock Switch:** With your thumb, press the safety lock switch located on the side of the handle.
2. **Pull the Trigger:** While holding the safety lock switch, pull the main trigger with your index finger. The blade will begin to rotate.
3. **Release Safety Lock:** Once the blade is rotating, you may release the safety lock switch. The tool will continue to operate as long as the trigger is pressed.
4. **Stop Operation:** Release the trigger to stop the blade.



Image 4.1: Step-by-step guide illustrating how to safely activate the electric scissors by engaging the safety lock and then pulling the trigger.

## Cutting Materials

The VLOXO electric scissors are suitable for cutting materials up to 1/4 inch (6.35 mm) thick, including:

- Cardboard
- Leather
- Plastic Mats
- Carpets
- Felts

**Note: This tool is not recommended for cutting fabric or for applications requiring high precision.**

1. Ensure the material to be cut is placed on a stable, flat surface.
2. Activate the tool as described above.
3. Gently guide the rotating blade along the desired cutting line. Apply steady, even pressure.
4. Allow the tool to do the work; do not force it through materials.

5. After cutting, release the trigger and store the tool safely.

# CONTINUOUS CUTTING



1. Cutting blade
2. Fixing screw
3. Blade guard
4. Safety Lock-off
5. On/Off switch



1. Press safety switch in



2. Pull trigger with safety switch pressed



3. Release safety switch and cut



Image 4.2: The VLOXO electric scissors in action, demonstrating its ability to cut through various materials with its 240 RPM cutting speed and 1/4 inch capacity.

# WIDELY APPLICATION



Leather



Cloth



Cardboard



Carpet



Plastic



Felts

Image 4.3: A visual guide to the wide range of materials compatible with the VLOXO electric scissors, including leather, cloth, cardboard, carpet, plastic, and felts.

## 5. MAINTENANCE

### Blade Sharpening

The VLOXO electric scissors are equipped with an automatic sharpening system. This system ensures the octagonal blade remains sharp during use.

- To maintain optimal cutting performance, regularly inspect the area around the blade guard.
- Ensure this area is free from dust and debris.
- Clean by blowing out with compressed air or using a small brush.



**Self Sharpening Blade**



Image 5.1: A detailed view of the self-sharpening blade feature, which helps maintain the cutting edge during operation.

## Cleaning and Storage

- Before cleaning, ensure the tool is turned off and the safety lock is engaged.
- Use a dry cloth to wipe down the exterior of the tool.
- Remove any accumulated debris from the blade area using a brush or compressed air.
- Store the electric scissors in the provided storage case in a dry, cool place.

## 6. TROUBLESHOOTING

Problem	Possible Cause	Solution
Tool does not turn on.	Battery is depleted. Safety lock not disengaged.	Charge the battery fully. Ensure both the safety lock switch and trigger are pressed simultaneously to start.
Cutting performance is poor.	Blade area is obstructed. Material is too thick.	Clean debris from around the blade guard. Do not attempt to cut materials exceeding 1/4 inch thickness.
Tool stops during operation.	Battery is low. Overload protection activated.	Recharge the battery. Reduce pressure or cut thinner materials. Allow tool to cool if overheated.

## 7. SPECIFICATIONS

Feature	Detail
Model Number	AT001
Brand	VLOXO
Battery Voltage	4.2V
Cutting Speed	240 RPM

Feature	Detail
Cutting Capacity	1/4 inch (6.35 mm)
Blade Material	High Speed Tool Steel
Product Dimensions	8.6"L x 1.9"W
Item Weight	14.9 ounces (approx. 422g)
Handle Material	Plastic
Hand Orientation	Ambidextrous
Battery Type	Lithium Metal (included)

## 8. WARRANTY AND SUPPORT

For warranty information or technical support, please refer to the contact details provided with your purchase or visit the official VLOXO website.

Keep your purchase receipt as proof of purchase for warranty claims.