

JOOWIN JW-WR302SV2-EU-IT+ESBZFO1

JOOWIN 300 Mbps Wireless WiFi Repeater Extender User Manual

Model: JW-WR302SV2-EU-IT+ESBZFO1

1. INTRODUCTION

Thank you for choosing the JOOWIN Wireless WiFi Repeater Extender. This device is designed to expand your existing wireless network coverage, eliminate Wi-Fi dead zones, and provide a stable internet connection throughout your home or office. It supports Repeater, AP, and Router modes to meet various network requirements. Please read this manual carefully before use and retain it for future reference.

2. PACKAGE CONTENTS

Please check the package contents upon opening:

- 1 x JOOWIN WiFi Repeater
- 1 x Power Cable
- 1 x Quick Installation Guide

3. PRODUCT OVERVIEW

The JOOWIN WiFi Repeater features a compact design with two external rotatable antennas for enhanced signal strength and stability. It includes an Ethernet port for wired device connectivity.



Image 3.1: Front view of the JOOWIN WiFi Repeater, highlighting its power indicator, wired connection status, wireless connection status, rotatable antennas, WPS button, and WAN/LAN port.

DOPPIA ANTENNA

Le doppie antenne ad alto guadagno con 5dBi aumentano efficacemente il segnale WiFi

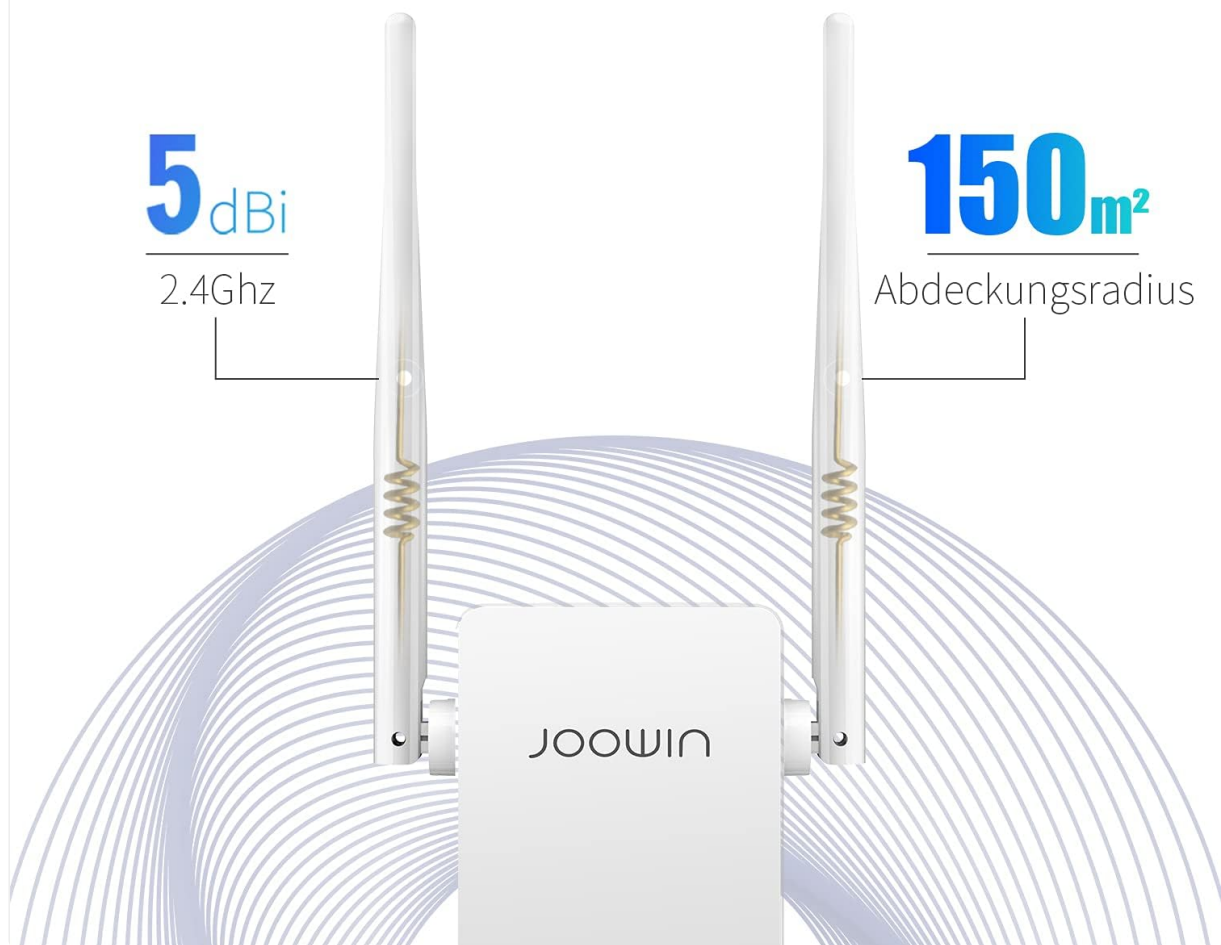


Image 3.2: Illustration of the dual 5dBi high-gain antennas, emphasizing their role in effectively boosting the WiFi signal and providing a coverage radius of up to 150m².

4. SETUP AND INSTALLATION

Follow these steps for easy installation:

1. **Power On:** Plug the repeater into a power outlet. Wait for the power indicator and WiFi indicator lights to illuminate.
2. **Connect to Repeater's WiFi:** On your smartphone or computer, connect to the WiFi network named "JOOWIN-XXX" (where XXX is a unique identifier).
3. **Access Configuration Page:** The configuration web page should appear automatically. If not, open a web browser and enter "192.168.10.1" in the address bar.
4. **Login:** Enter the default password "admin" and click "Login" (or similar button).
5. **Select Network to Extend:** Choose the WiFi network you wish to extend from the list. Enter its WiFi password and click "Connect".
6. **Restart and Reconnect:** After installation, the device will automatically restart. Then, connect your devices to the new extended WiFi network, typically named "XXX-plus" (the new extender SSID).

4.1 WPS Quick Setup

For a quicker setup, you can use the WPS function:

1. Plug the JOOWIN repeater into a power outlet near your main router.
2. Press the WPS button on your main router.
3. Within 2 minutes, press the WPS button on the JOOWIN repeater for approximately 10 seconds.
4. The repeater will automatically connect to your router and extend the network. The indicator lights will confirm a successful connection.



Image 4.1: Diagram illustrating the WPS quick setup process, showing the simultaneous pressing of the WPS button on both the router and the JOOWIN repeater for easy expansion.

5. OPERATING MODES

The JOOWIN WiFi Repeater supports three operating modes:

- **Repeater Mode:** Extends the coverage of an existing WiFi network, eliminating dead zones. This is ideal for large homes or offices where the main router's signal is weak in certain areas.
- **AP (Access Point) Mode:** Transforms a wired network connection into a wireless one. This allows multiple devices to share the same wireless network, suitable for areas with only wired internet access.
- **Router Mode:** Creates a new wireless network from a wired internet connection, functioning as a

primary router. This is useful if you need to set up a new network or replace an existing router.

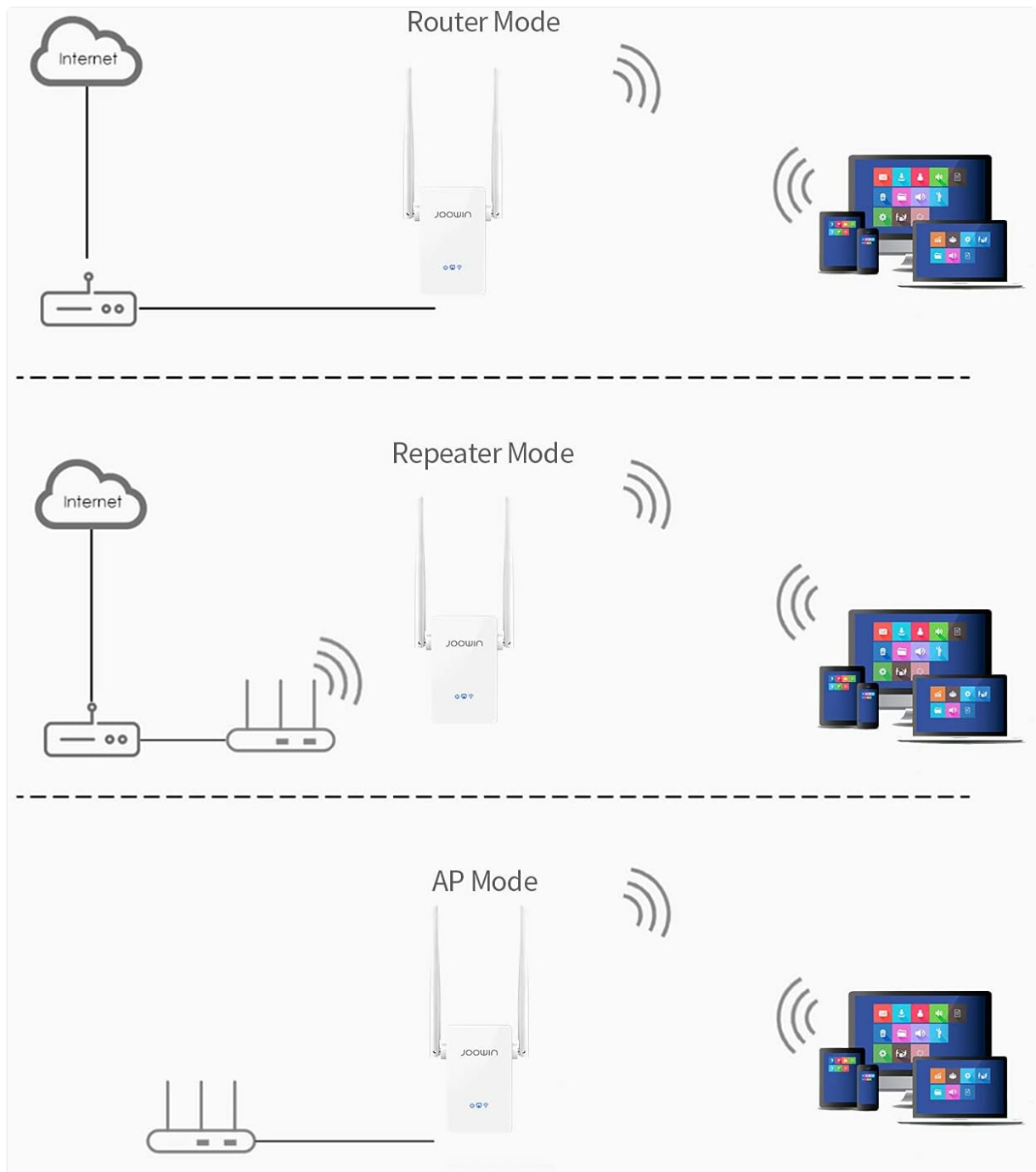


Image 5.1: Visual representation of the three operating modes: Router Mode (creating a new wireless network), Repeater Mode (extending an existing wireless network), and AP Mode (converting a wired connection to wireless).



● Copertura WiFi del router ⚠ Nessuna area di rete 📶 Copertura WiFi ripetitore JW-WR302S

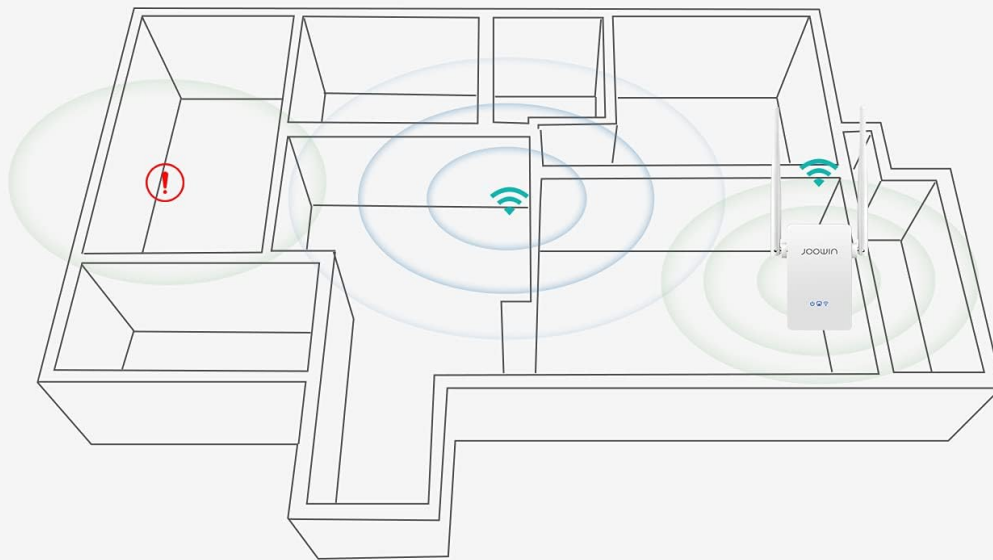


Image 5.2: Floor plan illustrating how the JOOWIN repeater (JW-WR302S) extends WiFi coverage from a router, eliminating areas with no network signal.

6. CONNECTIVITY

The repeater features an Ethernet port (WAN/LAN 10/100Mbps) that allows it to function as a wireless adapter for connecting wired devices such as smart TVs, gaming consoles, or desktop computers to your wireless network.

7. MAINTENANCE

To ensure optimal performance and longevity of your JOOWIN WiFi Repeater:

- Keep the device in a cool, dry place, away from direct sunlight and heat sources.
- Avoid placing the device near strong electromagnetic fields.
- Clean the device regularly with a soft, dry cloth. Do not use liquid cleaners.
- Ensure proper ventilation around the device.

8. TROUBLESHOOTING

If you encounter issues with your JOOWIN WiFi Repeater, consider the following:

- **No Power:** Ensure the power cable is securely connected and the power outlet is functional.
- **Cannot Connect to Repeater's WiFi:** Verify that the repeater is powered on and its WiFi indicator is lit. Try restarting the repeater.
- **Cannot Access Configuration Page:** Double-check that you are connected to the repeater's WiFi (e.g., "JOOWIN-XXX") and that you have entered "192.168.10.1" correctly in your browser. Clear your browser's cache or try a different browser.
- **Weak or Unstable Signal:** Relocate the repeater to a position between your main router and the desired coverage area. Ensure there are minimal obstructions (thick walls, metal objects) between the repeater and your devices.
- **Forgotten Password:** You may need to reset the device to factory defaults. Locate the reset button (usually a small pinhole) and press it for 5-10 seconds while the device is powered on. This will erase all custom settings.

9. SPECIFICATIONS

Brand	JOOWIN
Model Number	JW-WR302SV2-EU-IT+ESBZFO1
Wireless Communication Standard	802.11n
Data Transfer Rate	300 Megabits per second
Supported Frequency Bands	2.4 GHz
Special Features	Repeater/Router/AP Mode, 2 Antennas
Compatible Devices	Generic WiFi devices

10. WARRANTY AND SUPPORT

JOOWIN products come with a standard manufacturer's warranty. For detailed warranty information, please refer to the warranty card included in your package or visit the official JOOWIN website. If you require technical assistance or have questions not covered in this manual, please contact JOOWIN customer support through their official channels.