

GODOX LC500R

GODOX LC500R RGB LED Light Stick User Manual

Model: LC500R

Brand: GODOX

1. INTRODUCTION

The GODOX LC500R is a versatile 23W RGB LED Light Stick designed for various photographic and videographic applications. It features adjustable brightness, color temperature, and a wide range of RGB colors and special effects. This manual provides essential information for the safe and effective operation, maintenance, and troubleshooting of your LC500R light stick.



Image 1.1: The GODOX LC500R RGB LED Light Stick with its detachable barn doors.

2. WHAT'S IN THE BOX

Please check the contents of your package to ensure all items are present:

- LC500R LED Light Stick x1
- Two-way Barndoors x1
- Charger x1
- Portable Bag x1
- Summay Cleaning Cloth x1

[Included Items]



LC500R LED Light *1
Portable Bag *1

Two-way Barndoors *1
Summay Cleaning Cloth *1

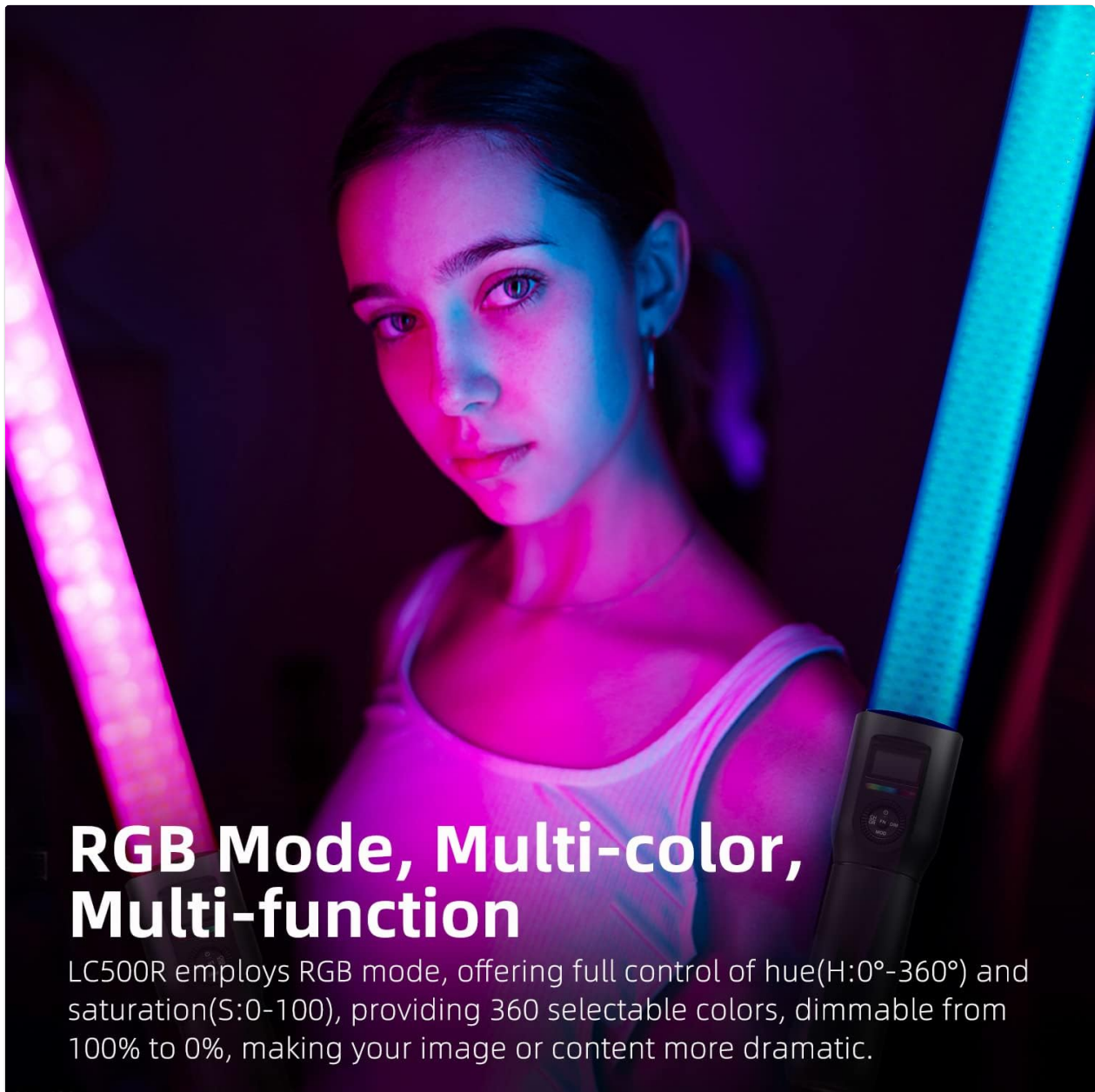
Charger *1

Image 2.1: All items included in the GODOX LC500R package.

3. PRODUCT FEATURES

3.1 RGB Mode (HSI)

The LC500R offers full control over hue (H: 0°-360°), saturation (S: 0-100), and intensity, providing 360 selectable colors. This allows for creative lighting effects and color matching.



RGB Mode, Multi-color, Multi-function

LC500R employs RGB mode, offering full control of hue(H:0°-360°) and saturation(S:0-100), providing 360 selectable colors, dimmable from 100% to 0%, making your image or content more dramatic.

Image 3.1: The LC500R in RGB mode, demonstrating multi-color capabilities.

3.2 CCT Mode (Color Temperature)

In CCT mode, the LC500R provides a wide color temperature range from 2500K (warm) to 8500K (cool). It boasts high color accuracy with a CRI of 96 and TLCI of 98, ensuring natural and precise color rendition.

CCT Mode

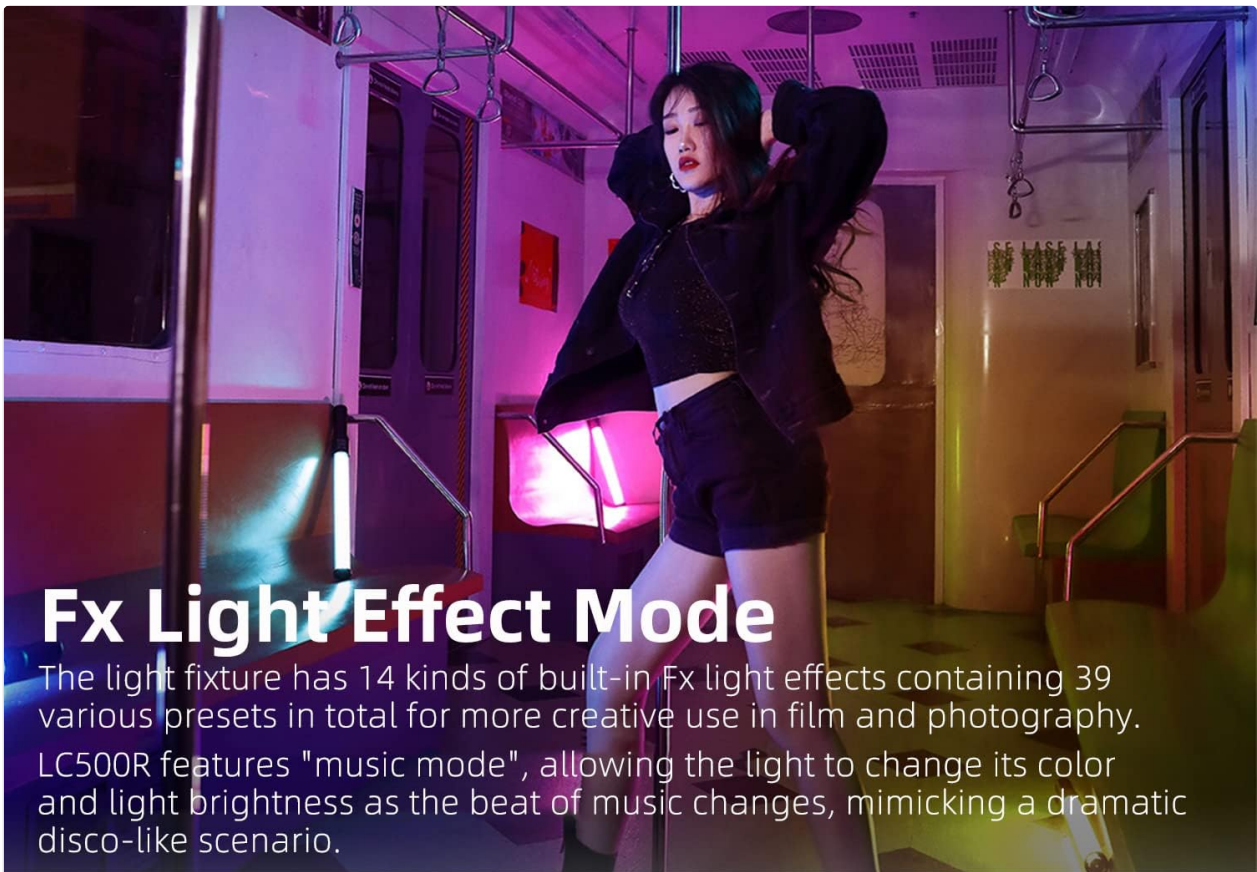
The LC500R features CCT mode to precisely adjust the color temperature from 2500K to 8500K.



Image 3.2: The LC500R in CCT mode, showing the range of adjustable color temperatures.

3.3 FX Light Effects

The light stick includes 14 types of built-in FX light effects with 39 presets, allowing simulation of various scenes for creative shooting. Examples include RGB looping, broken bulbs, fireworks, police car, fire engine, and ambulance lights.



Fx Light Effect Mode

The light fixture has 14 kinds of built-in Fx light effects containing 39 various presets in total for more creative use in film and photography. LC500R features "music mode", allowing the light to change its color and light brightness as the beat of music changes, mimicking a dramatic disco-like scenario.

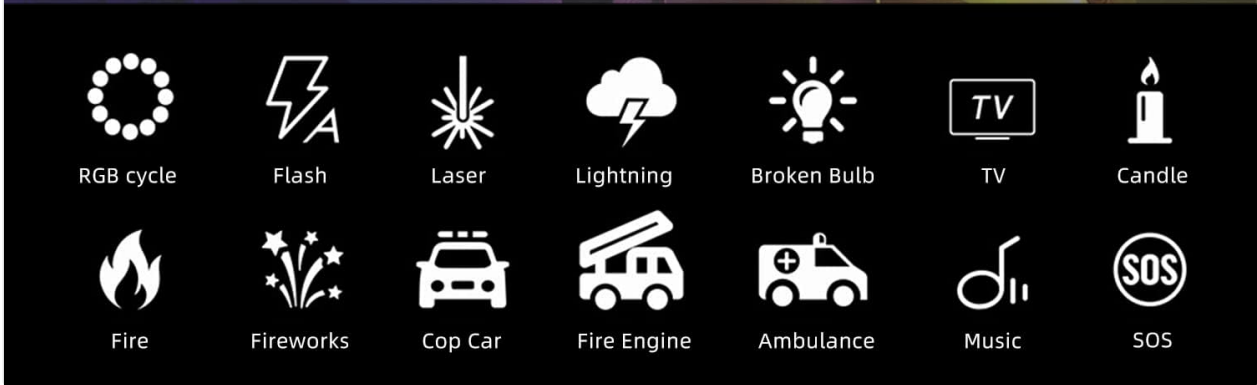


Image 3.3: Visual representation of the 14 FX light effects available on the LC500R.

3.4 Music Mode

Equipped with a built-in microphone, the LC500R features a "music mode" that allows the light's color and brightness to change in sync with music beats, creating dynamic visual effects.



Image 3.4: The LC500R's display indicating Music Mode is active.

3.5 Two-way Barndoors

The included two-way barndoors attach to the light stick, allowing users to shape and direct the light beam, providing more control over lighting effects.



Image 3.5: Detachable two-way barndoors for light shaping.

3.6 Flexible Positioning

The LC500R is lightweight and designed for handheld use. It also features a 1/4"-20 thread at its base, allowing it to be mounted on tilt stands, tripods, or light stands for flexible placement.

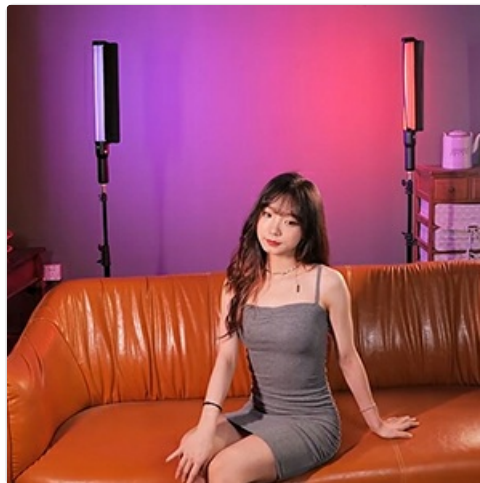


Image 3.6: The 1/4"-20 mounting thread at the base of the LC500R.

4. SETUP

4.1 Charging the Battery

The LC500R has a built-in 14.4V/2600mAh rechargeable battery. Before first use, fully charge the device using the provided charger. A full charge provides approximately 1.5 hours of lighting at 100% brightness.

4.2 Attaching Barndoors

Align the two-way barndoors with the ends of the light stick and secure them into place. These can be adjusted to control the light beam.

4.3 Mounting the Light Stick

For hands-free operation, attach the LC500R to a compatible light stand, tripod, or tilt stand using the 1/4"-20 thread located at the bottom of the handle.

5. OPERATING INSTRUCTIONS

5.1 Power On/Off

Press and hold the power button on the control panel to turn the light stick on or off.

5.2 Control Panel Overview

The integrated control panel allows for direct adjustments. Use the dial and buttons to navigate through settings and modes.



Image 5.1: Detailed view of the LC500R's control panel and display.

5.3 Mode Selection

Press the 'MODE' button to switch between RGB (HSI), CCT, and FX modes. The current mode will be displayed on the screen.

5.4 Adjusting Settings

- **Brightness:** In any mode, rotate the 'DIM' dial to adjust brightness from 0% to 100%.
- **CCT Mode:** Use the 'FN' button to select color temperature (2500K-8500K) and adjust with the dial.
- **RGB Mode:** Use the 'FN' button to select Hue (H) or Saturation (S) and adjust with the dial.
- **FX Mode:** Use the 'FN' button to cycle through the 14 FX effects and select specific presets with the dial.

5.5 Wireless Remote Control (Optional)

The LC500R supports an optional wireless remote control (not included) for convenient adjustments from a distance. Refer to the remote control's manual for pairing and operation instructions.



Image 5.2: The LC500R can be controlled wirelessly with an optional remote.

6. MAINTENANCE

- Keep the device dry. Do not handle with wet hands.
- Clean the light stick with a soft, dry cloth. Do not use harsh chemicals or abrasive materials.
- Avoid extreme temperatures and direct sunlight.
- Store in the portable bag when not in use to protect it from dust and damage.

7. TROUBLESHOOTING

- **Light not turning on:** Ensure the battery is charged. Connect to the charger and try again.
- **Light flickering:** Check for loose connections or low battery. If persistent, contact support.
- **Remote control not working:** Ensure the remote has fresh batteries and is within range. Check pairing instructions in the remote's manual.

8. SPECIFICATIONS

Technical Data



RGB LED Light Stick LC500R

Power: $\approx 23W$

FX Light Effects: 14

Color Temperature Range: 2500K~8500K

Channel: 32

100% Light Brightness(Lux): $\approx 5800(1m)$

CRI Index: ≈ 96

TLCI Index: ≈ 98



Bi-color LED Light Stick LC500

$\approx 18W$

/

5600 \pm 300K, 3300K \pm 300K

16 \uparrow

$\approx 1200(1m)$

≈ 95

≈ 95

Image 8.1: Technical specifications for the GODOX LC500R.

Feature	Specification
Brand	GODOX
Model Name	LC500R
Power	23W
Color Temperature Range	2500K-8500K
CRI Index	~ 96
TLCI Index	~ 98
100% Light Brightness (Lux)	$\sim 5800 (1m)$
FX Light Effects	14 types (39 presets)
Battery Life (100% brightness)	Approx. 1.5 Hours

Feature	Specification
Connectivity Technology	Bluetooth
Water Resistance Level	Not Water Resistant

9. OFFICIAL PRODUCT VIDEO

Video 9.1: An official product video showcasing the GODOX LC500R RGB LED Light Stick's features and various lighting effects. This video demonstrates the light's versatility in different shooting scenarios, including RGB and CCT modes, FX effects, and flexible positioning options.

10. WARRANTY AND SUPPORT

The GODOX LC500R comes with a **12-month warranty** from the date of purchase. For warranty claims, technical support, or service inquiries, please contact your retailer or GODOX customer service directly. Keep your proof of purchase for warranty validation.