



[Manuals.plus](#) /

› [Skullcandy](#) /

› Skullcandy Jib True 2 Wireless Earbuds User Manual

## Skullcandy S1JTW-P948

# Skullcandy Jib True 2 Wireless Earbuds User Manual

Model: S1JTW-P948

## INTRODUCTION

Welcome to the user manual for your Skullcandy Jib True 2 Wireless Earbuds. These earbuds offer a seamless audio experience with extended battery life and integrated Tile finding technology. This manual provides essential information on setting up, operating, maintaining, and troubleshooting your device to ensure optimal performance.

## WHAT'S IN THE BOX

- Skullcandy Jib True 2 Wireless Earbuds
- Charging Case
- USB Charging Cable
- Ear Gels (S, M, L)

## SETUP

### Charging Your Earbuds and Case

Before first use, fully charge your Jib True 2 earbuds and charging case. Place the earbuds into the charging case. Connect the USB charging cable to the case and a power source. The LED indicator on the case will show charging status.



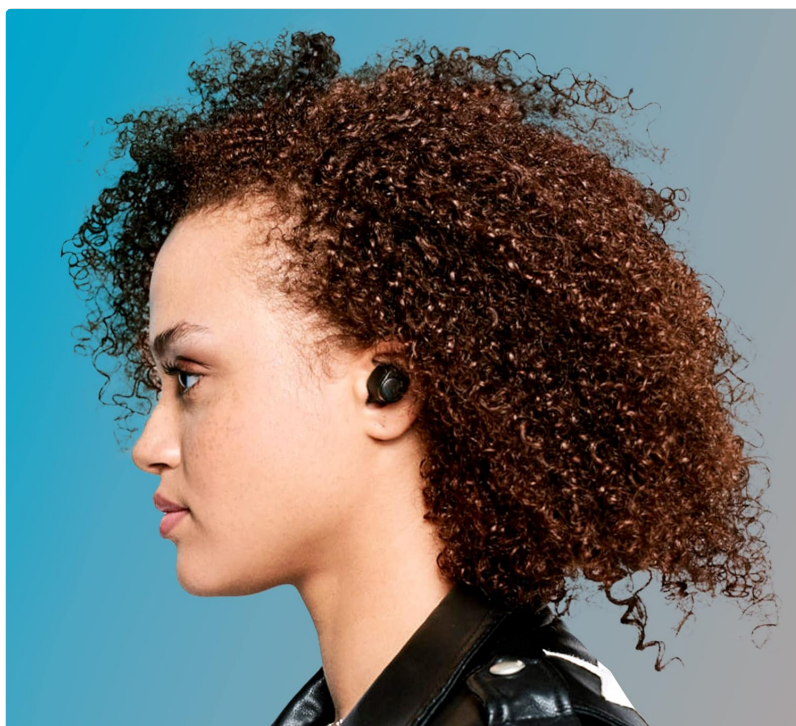
The Jib True 2 offers up to 33 hours of total battery life: 24 hours from the charging case and 9 hours from the earbuds themselves.

### **Bluetooth Pairing**

1. Remove both earbuds from the charging case. They will automatically enter pairing mode.
2. On your device (smartphone, tablet, etc.), open Bluetooth settings.
3. Select "Jib True 2" from the list of available devices.
4. Once connected, you will hear an audible confirmation.

### **Tile Finding Technology Setup**

Your Jib True 2 earbuds come with built-in Tile technology, allowing you to locate them if misplaced. Download the Tile app from your device's app store and follow the in-app instructions to activate and register your earbuds.



Easily locate your earbuds using the Tile app if they are misplaced.

## OPERATING INSTRUCTIONS

### On-Earbud Controls

The Jib True 2 earbuds feature intuitive controls for managing your audio and calls:

- **Play/Pause:** Single press either earbud.
- **Track Forward:** Double press the right earbud.
- **Track Back:** Double press the left earbud.
- **Volume Up:** Press and hold the right earbud.
- **Volume Down:** Press and hold the left earbud.
- **Answer/End Call:** Single press either earbud.
- **Activate Voice Assistant:** Triple press either earbud.

### Solo Mode

The Jib True 2 supports Solo Mode, allowing you to use either the left or right earbud independently. Simply remove one earbud from the case, and it will automatically connect to your device. This is useful for calls or when you need to stay aware of your surroundings.

### Water Resistance (IPX4)

Your Jib True 2 earbuds are rated IPX4 water resistant, meaning they can withstand splashes of water from any direction. This makes them suitable for workouts and light rain. However, they are not designed for submersion in water.



The IPX4 rating ensures your earbuds can handle sweat and light splashes.

## MAINTENANCE

### Cleaning

To maintain sound quality and hygiene, regularly clean your earbuds. Use a soft, dry, lint-free cloth to wipe the earbuds and charging case. For ear gels, remove them and gently clean with a damp cloth, then ensure they are completely dry before reattaching.

## Storage

When not in use, store your Jib True 2 earbuds in their charging case to protect them and keep them charged. Avoid storing them in extreme temperatures or humid environments.

## TROUBLESHOOTING

If you encounter issues with your Skullcandy Jib True 2 earbuds, try the following solutions:

- **Earbuds not pairing:** Ensure both earbuds are removed from the case and are in pairing mode. Turn off and on your device's Bluetooth, then try re-pairing.
- **Only one earbud playing audio:** Place both earbuds back into the charging case, close the lid for a few seconds, then remove them. This often re-syncs them.
- **No sound:** Check the volume level on your device and on the earbuds. Ensure the earbuds are properly connected via Bluetooth.
- **Charging issues:** Verify the charging cable and power source are working. Clean the charging contacts on both the earbuds and the case.
- **Lost earbud:** Use the Tile app on your smartphone to 'ring' your misplaced earbud.

## SPECIFICATIONS

| Feature                           | Detail   |
|-----------------------------------|--|
| Model Name                        | Jib True   |
| Model Number                      | S1JTW-P948                                       |
| Connectivity Technology           | Bluetooth  |
| Wireless Communication Technology | Bluetooth  |
| Battery Life                      | Up to 33 Hours (9 hours earbuds + 24 hours case) |
| Water Resistance Level            | IPX4 (Sweat and Water Resistant)                 |
| Noise Control                     | Sound Isolation                                  |
| Ear Placement                     | In Ear   |
| Control Type                      | Media Control                                    |
| Bluetooth Range                   | 10 Meters  |
| Item Weight                       | 1.71 ounces (48.5 Grams)                         |
| Product Dimensions                | 5.71 x 3.54 x 1.22 inches                        |
| UPC                               | 810045686608                                     |

## WARRANTY AND SUPPORT

Your Skullcandy Jib True 2 Wireless Earbuds come with a 1-year US warranty. For detailed warranty information, product support, or to explore other Skullcandy products, please visit the official Skullcandy store:

[Visit the Skullcandy Store on Amazon](#)

