

## Extel EXT-XR106

# Extel Gold Solid Latin Cross Pendant (Model EXT-XR106) User Manual

## INTRODUCTION

This manual provides essential information for the care and use of your Extel 14k Yellow Gold Latin Cross Pendant, Model EXT-XR106. This pendant features a classic Latin cross design, where the vertical beam extends above the crossbeam, with a longer bottom arm. It is crafted from 14k yellow gold and manufactured in the United States.

## PRODUCT OVERVIEW

The Extel Latin Cross Pendant is designed to be a durable and elegant piece of jewelry. Its construction from 14k yellow gold ensures longevity and a timeless aesthetic. The design is a traditional Latin cross, symbolizing faith.

- **Design:** Classic Latin Cross, with the vertical beam extending above the crossbeam.
- **Material:** 14k Yellow Gold, a blend of pure gold with alloy metals like copper and zinc for enhanced durability.
- **Dimensions:** Approximately 1 inch (2.54 cm) in length and 0.5 inch (1.27 cm) in width.
- **Origin:** Proudly manufactured in the United States.

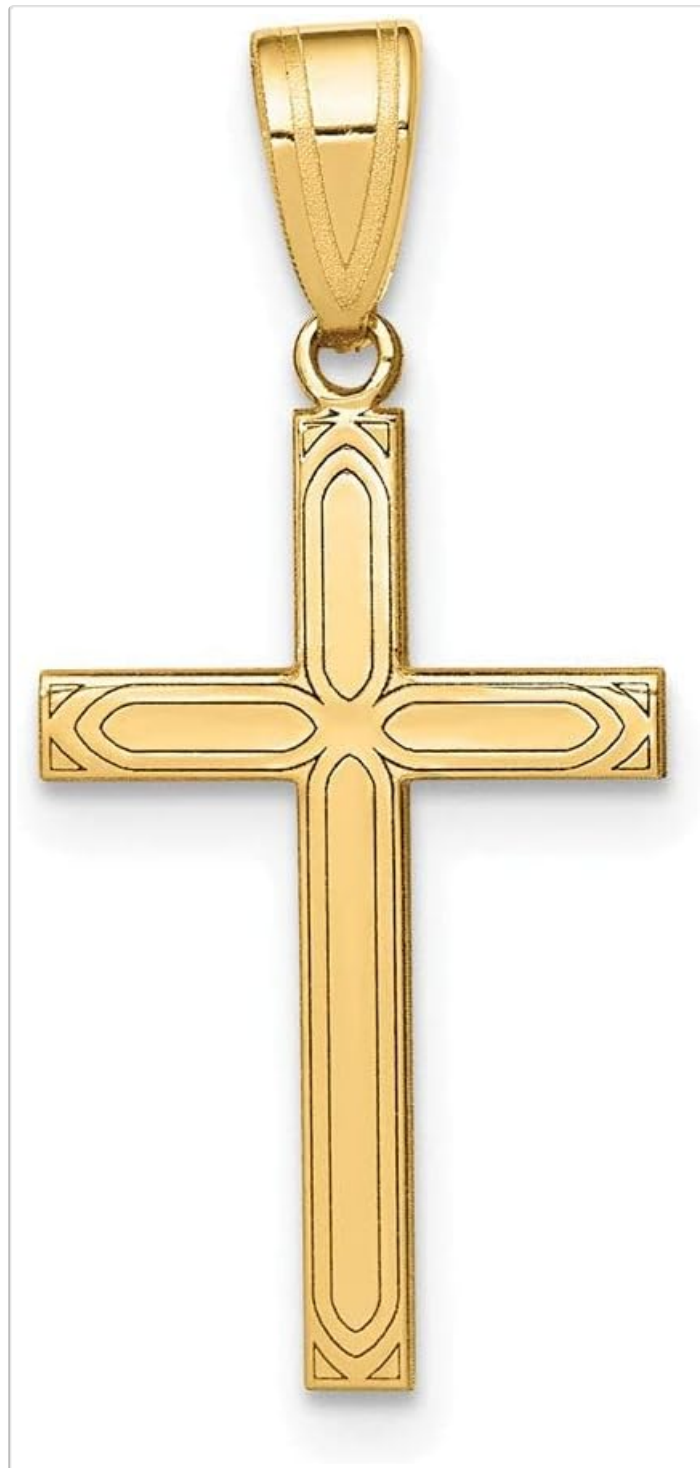


Image: Front view of the Extel 14k Yellow Gold Latin Cross Pendant, showcasing its classic design and polished finish.



Image: Back view of the Extel 14k Yellow Gold Latin Cross Pendant, showing the brushed texture and bail.

## SETUP

---

The Extel Latin Cross Pendant is designed to be worn with a necklace chain (chain not included). To set up your pendant:

1. Select a suitable necklace chain. Ensure the chain's clasp and end link can pass through the pendant's bail (the loop at the top).
2. Carefully thread the chain through the bail of the pendant.
3. Secure the chain by fastening its clasp.

## OPERATING (WEARING)

---

Once attached to a chain, the pendant can be worn as desired. Consider the following for optimal wear:

- Ensure the chain length is comfortable and allows the pendant to rest at your preferred position.
- Avoid wearing the pendant during strenuous activities that could cause it to snag or be damaged.
- Remove the pendant before showering, swimming, or applying lotions and perfumes to prevent buildup and maintain its luster.

## MAINTENANCE

---

Proper care will help maintain the beauty and integrity of your 14k yellow gold pendant.

- **Cleaning:** Gently clean your pendant with a soft, lint-free cloth. For deeper cleaning, use a mild soap and warm water solution. Soak the pendant for a few minutes, then gently scrub with a soft brush (like a toothbrush). Rinse thoroughly with clean water and dry completely with a soft cloth.
- **Storage:** Store your pendant in a clean, dry place, preferably in a fabric-lined jewelry box or pouch to prevent scratches and tangling with other jewelry.
- **Avoid Chemicals:** Keep the pendant away from harsh chemicals, including household cleaners, chlorine, and abrasive materials, as these can damage the gold.

## TROUBLESHOOTING

---

If you encounter issues with your pendant, consider the following:

- **Dullness/Tarnish:** Gold can become dull over time due to skin oils, lotions, and environmental factors. Regular cleaning as described in the Maintenance section will restore its shine.
- **Scratches:** Gold is a relatively soft metal. Minor scratches can occur with wear. Avoid abrasive contact and store properly to minimize scratching. For significant scratches, consult a professional jeweler.
- **Damage to Bail:** If the bail (loop) appears bent or damaged, do not attempt to repair it yourself, as this could cause further damage. Seek assistance from a professional jeweler.

## SPECIFICATIONS

---

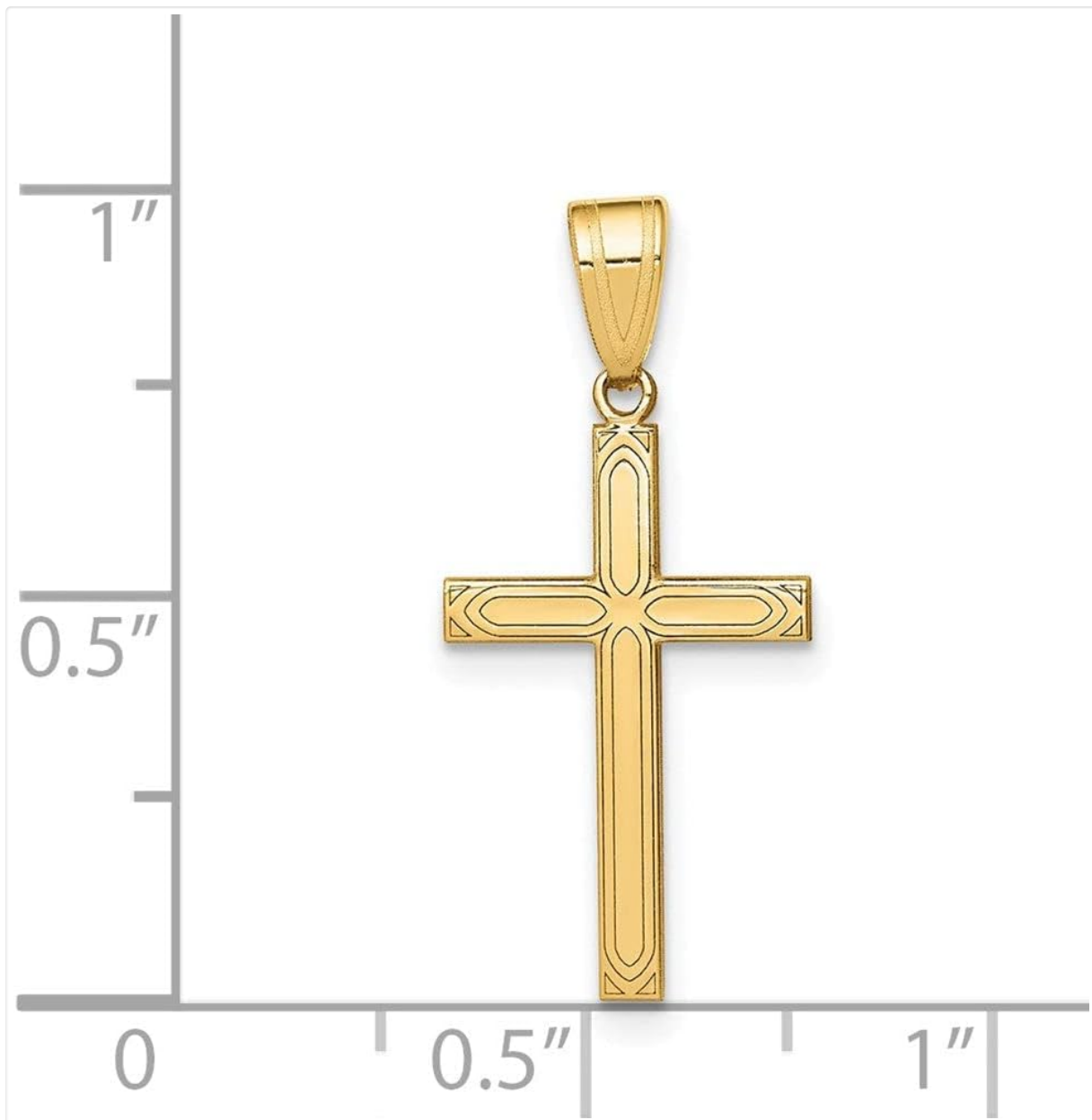


Image: Extel 14k Yellow Gold Latin Cross Pendant shown with measurement markings, indicating its 1 x 0.5 inch size.

Attribute	Detail
Item Model Number	EXT-XR106
Department	Unisex Adult
Date First Available	March 15, 2022
ASIN	B09VLZVZDL
Material	Metal
Metal Type	Yellow Gold
Gem Type	No Gemstone

## WARRANTY AND SUPPORT

Extel Jewelry provides a lifetime guarantee against any manufacturer's defects for this product. This

warranty covers defects in materials and workmanship under normal use.

For warranty claims, questions, or support, please contact Extel customer service. You can find more information about Extel Jewelry and their products by visiting the [Extel Store](#).



Image: Graphic highlighting the American manufacturing of Extel jewelry, emphasizing quality materials.

# Extel

## CLASSIC JEWELRY DESIGNS

### MISSION



Our mission at Extel Jewelry is to offer simple, classic jewelry designs at an affordable price with an emphasis on quality and customer service. Our extensive jewelry collection is curated from the best designers here in the United States ensuring the highest quality standards and craftsmanship.

### MATERIALS



Created with an array of precious metals from 14kt gold to Sterling Silver. These offer a bright, eye catching shine that is classic, versatile, and meant to last.

### SERVICE COMMITMENT



We strive to conduct business with honesty and integrity. The Extel Golden Rule Commitment is to treat our customers the way we'd want to be treated.

### GIFT BOX



Extel Jewelry comes packaged in an elegant gift box with each purchase making it the perfect gift for any occasion.

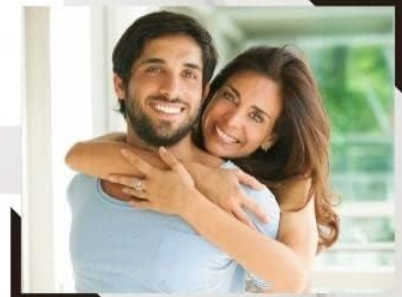




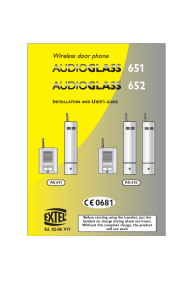


Image: Details about Extel's commitment to quality materials and customer service, relevant to product support.

## Related Documents - EXT-XR106



### [Extel Mood 083701 Smart Access: Installation Guide & User Manual](#)

Comprehensive installation and user guide for the Extel Mood 083701 Smart Access wireless doorbell and smart home device. Learn about setup, features, maintenance, and specifications.

	<p><a href="#">EXTEL WAVE Connected Videophone and Intercom Panel Installation and User Manual</a></p> <p>Comprehensive guide for installing and using the EXTEL WAVE connected videophone and intercom panel, including setup, features, technical specifications, and safety instructions.</p>
	<p><a href="#">Extel Wave 3 : Guide d'installation et d'utilisation du visiophone connecté avec lecteur d'empreintes digitales</a></p> <p>Découvrez le guide complet d'installation et d'utilisation du visiophone connecté sans fil Extel Wave 3 avec lecteur d'empreintes digitales (Réf. 720337). Apprenez à installer, configurer et utiliser toutes les fonctionnalités de votre interphone vidéo.</p>
	<p><a href="#">EXTEL AUDIOGLASS 651 &amp; 652 Wireless Door Phone: Installation and User's Guide</a></p> <p>Comprehensive installation and user guide for the EXTEL AUDIOGLASS 651 and 652 wireless door phone systems. Covers component descriptions, installation steps, specifications, troubleshooting, and programming.</p>
	<p><a href="#">Extel Wave 720313 Video Intercom System: Installation and User Manual</a></p> <p>This comprehensive guide details the installation, operation, and technical specifications of the Extel Wave 720313 video intercom system. It covers kit contents, component descriptions, wiring, mounting, smartphone app integration, advanced settings, warranty, and safety precautions.</p>
	<p><a href="#">EXTEL Klavy 3 Code Keypad: Installation and User Manual</a></p> <p>Comprehensive guide for the EXTEL Klavy 3 code keypad, covering installation, programming, safety guidelines, and usage. Learn how to connect, configure, and operate the device for secure access control.</p>