

Manuals.plus /

- › FinaMill /
- › FinaMill Electric Spice Grinder Instruction Manual

FinaMill GP180134-12STO

FinaMill Electric Spice Grinder Instruction Manual

Welcome to the FinaMill experience. This manual provides essential information for the safe and effective use of your new FinaMill electric spice grinder.



The FinaMill electric spice grinder is designed for effortless grinding of whole spices, offering convenience and versatility in your kitchen. Its innovative interchangeable pod system ensures pure flavor without cross-contamination.

1. GETTING STARTED

1.1 Unpacking

Carefully remove all components from the packaging: the FinaMill grinder unit and the two FinaPod PRO Plus spice pods. Retain packaging for future storage or transport.

1.2 Battery Installation

The FinaMill is powered by AA batteries (not included).

1. Twist the top section of the FinaMill unit counter-clockwise to open the battery compartment.
2. Insert 3 AA batteries, ensuring correct polarity (+/-) as indicated inside the compartment.
3. Align the top section and twist clockwise to securely close the compartment.

THE EASIEST WAY TO GRIND SPICES.



This image illustrates the internal components, including the battery placement area within the main grinder unit.

1.3 Filling Spice Pods

Your FinaMill comes with two FinaPod PRO Plus pods. These are suitable for grinding dry spices such as peppercorns, salt, dried garlic, dried chopped onion, and dried rosemary. They are not suitable for fresh or wet herbs.

1. To open a FinaPod, twist the clear top section counter-clockwise and lift it off.

2. Fill the pod with your desired whole spices. Avoid overfilling.
3. Replace the clear top section and twist clockwise to secure it.



This image demonstrates the process of refilling a FinaPod by removing its top and adding spices.

2. OPERATION

2.1 Attaching a Spice Pod

Place the FinaMill grinder unit directly over a filled FinaPod. Gently press down until you hear a "click," indicating the pod is securely attached.

2.2 Adjusting Coarseness

Each FinaPod features an adjustable coarseness knob located on its bottom.

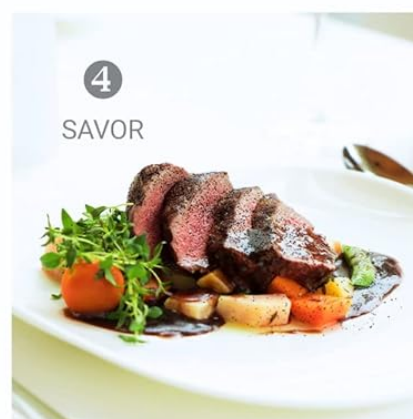
1. Turn the knob clockwise for a finer grind.
2. Turn the knob counter-clockwise for a coarser grind.



This image highlights the adjustable knob on the base of the spice pod, allowing users to select their preferred grind size.

2.3 Grinding Spices

With a FinaPod attached and the coarseness set, simply press the power button located on the top of the FinaMill unit. The grinder will activate, and an LED light will illuminate the grinding area. Release the button to stop grinding.



This visual guide demonstrates the simple four-step process: selecting a spice pod, attaching it with a click, pressing the button to grind, and enjoying freshly ground spices.

2.4 Changing Spice Pods

To change pods, gently press the FinaMill unit down onto a flat surface. The attached FinaPod will release with a click. You can then swap it for another filled FinaPod. This system prevents flavor cross-contamination between different spices.



Dedicated Spice pods
No Cross Contamination

One Grinder for Many Spices

**BETTER TASTE.
FAST AND EASY.**

Elevate your dining experience with freshly ground spices.

This image showcases the versatility of the FinaMill system, with multiple dedicated spice pods allowing for quick and clean changes between different spices.

3. MAINTENANCE AND CARE

3.1 Cleaning

The FinaMill grinder unit and spice pods are **not dishwasher safe**.

1. To clean the FinaMill unit, wipe the exterior with a damp cloth. Do not submerge in water.
2. For the FinaPods, remove any remaining spices. The ceramic grinding elements can be cleaned with a small brush. The clear plastic body can be wiped clean with a damp cloth. Ensure all parts are completely dry before reassembly or refilling.

3.2 Storage

Store your FinaMill and FinaPods in a dry place away from direct sunlight and excessive heat.

4. TROUBLESHOOTING

Problem	Possible Cause	Solution
Grinder not working	Batteries are low or incorrectly installed.	Check battery polarity or replace with fresh AA batteries.
Pod not attaching securely	Pod or grinder mechanism is obstructed.	Ensure no spice residue is blocking the connection points.
Inconsistent grind	Coarseness setting is incorrect or grinding elements are dirty.	Adjust the coarseness knob. Clean the ceramic grinding elements.
Grinder jams	Attempting to grind wet or fresh herbs, or oversized spices.	Only use dry, whole spices. Ensure spices are not too large for the pod.

5. PRODUCT SPECIFICATIONS

Brand: FinaMill

Model: GP180134-12STO

Dimensions: 3.5"W x 9"H

Weight: 1.5 pounds (680 Grams)

Material: Ceramic grinding elements

Operation Mode: Automatic, Battery-Operated (3 AA batteries, not included)

Included Components: 1 FinaMill Grinder, 2 FinaPod PRO Plus

Care Instructions: Hand Wash (Not Dishwasher Safe)



6. WARRANTY AND SUPPORT

For warranty information, product support, or to purchase additional FinaPods and accessories, please visit the official FinaMill website or contact customer service.

Note: Specific warranty terms and contact details may vary and are typically provided with your product purchase or on the manufacturer's official channels.