

TP-Link Archer TXE75E

TP-Link Archer TXE75E AXE5400 PCIe WiFi 6E Card Instruction Manual

Model: Archer TXE75E

1. INTRODUCTION

The TP-Link Archer TXE75E is an AXE5400 Wi-Fi 6E Bluetooth 5.3 PCIe Adapter designed to upgrade your desktop PC's wireless capabilities. It offers tri-band speeds, enhanced signal coverage, and advanced security features for a reliable and fast wireless experience.



Figure 1: TP-Link Archer TXE75E PCIe WiFi 6E Card and Magnetic Antenna Base

2. PACKAGE CONTENTS

Verify that all items are included in your package:

- 1 x Archer TXE75E PCIe Adapter
- 1 x Magnetized Antenna Base with 1m RF Cable
- 2 x High Gain Antennas
- 1 x Low-Profile Bracket
- 1 x Bluetooth Header Cable
- 1 x Quick Installation Guide
- 1 x Resource CD (for drivers)

3. SYSTEM REQUIREMENTS

- An available PCIe X1 slot (or larger, e.g., X16) on your motherboard.
- For Bluetooth functionality: An available F_USB connector on your motherboard.
- Operating System: Windows 10 (64-bit) or Windows 11.
- To utilize 6GHz Wi-Fi, the user needs to be using Windows 11.
- A Wi-Fi 6E compatible router or access point is recommended to fully utilize the adapter's capabilities.

4. SETUP AND INSTALLATION

4.1 Pre-Installation Checklist

1. Turn off your computer and unplug the power cable.
2. Open your computer case.
3. Locate an available PCIe X1 slot. If you have a low-profile computer case, you may need to replace the pre-installed standard bracket on the adapter with the provided low-profile bracket.

4.2 Installing the PCIe Adapter

1. Carefully insert the Archer TXE75E adapter into an available PCIe X1 slot (or a larger slot like X16, which is fully compatible). Ensure it is seated firmly.
2. Secure the adapter with a screw if your case requires it.

Low Profile and Standard Bracket provided

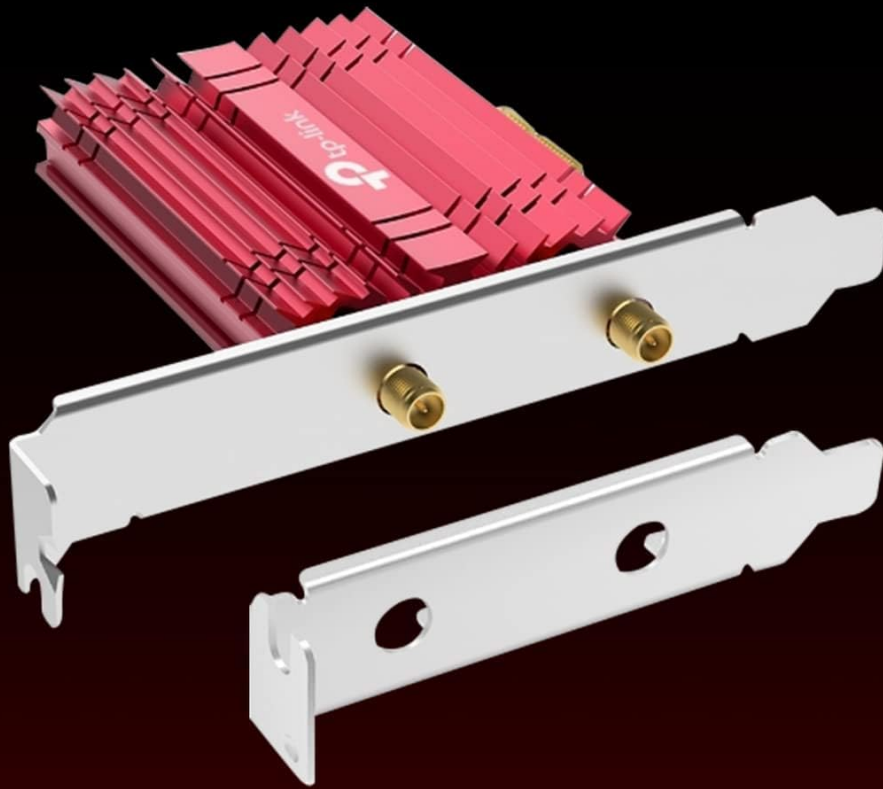


Figure 2: Low-profile and standard brackets are provided for different PC case sizes.

4.3 Connecting the Bluetooth USB Cable

To utilize the Bluetooth function, the provided Bluetooth USB cable must be connected:

1. Connect the smaller end of the Bluetooth header cable to the connector on the Archer TXE75E adapter.
2. Connect the larger end of the Bluetooth header cable to an available F_USB connector on your motherboard. Refer to your motherboard's manual for the exact location of the F_USB connector.

Bluetooth 5.3

Connect all the devices you need with faster speed
and broader coverage than Bluetooth 4.2



* Please note that to utilize the Bluetooth function, the Bluetooth USB cable must be connected to a F_USB connector

** Please also note to update firmware to support Bluetooth 5.3

Figure 3: The Archer TXE75E supports Bluetooth 5.3 for connecting various peripherals.

4.4 Attaching the Antennas

You have two options for antenna placement:

1. **Directly to the Adapter:** Screw the two high-gain antennas directly onto the connectors on the back of the Archer TXE75E adapter.
2. **Using the Magnetic Base:** Screw the two high-gain antennas onto the magnetized antenna base. Then, connect the RF cables from the magnetic base to the connectors on the back of the Archer TXE75E adapter. Place the magnetic base anywhere on your desktop for optimal signal reception.

Broader Reception and Flexibility

Two High-Gain Tri-Band antennas extend your existing WiFi reception while a magnetic base allows for flexible placement.

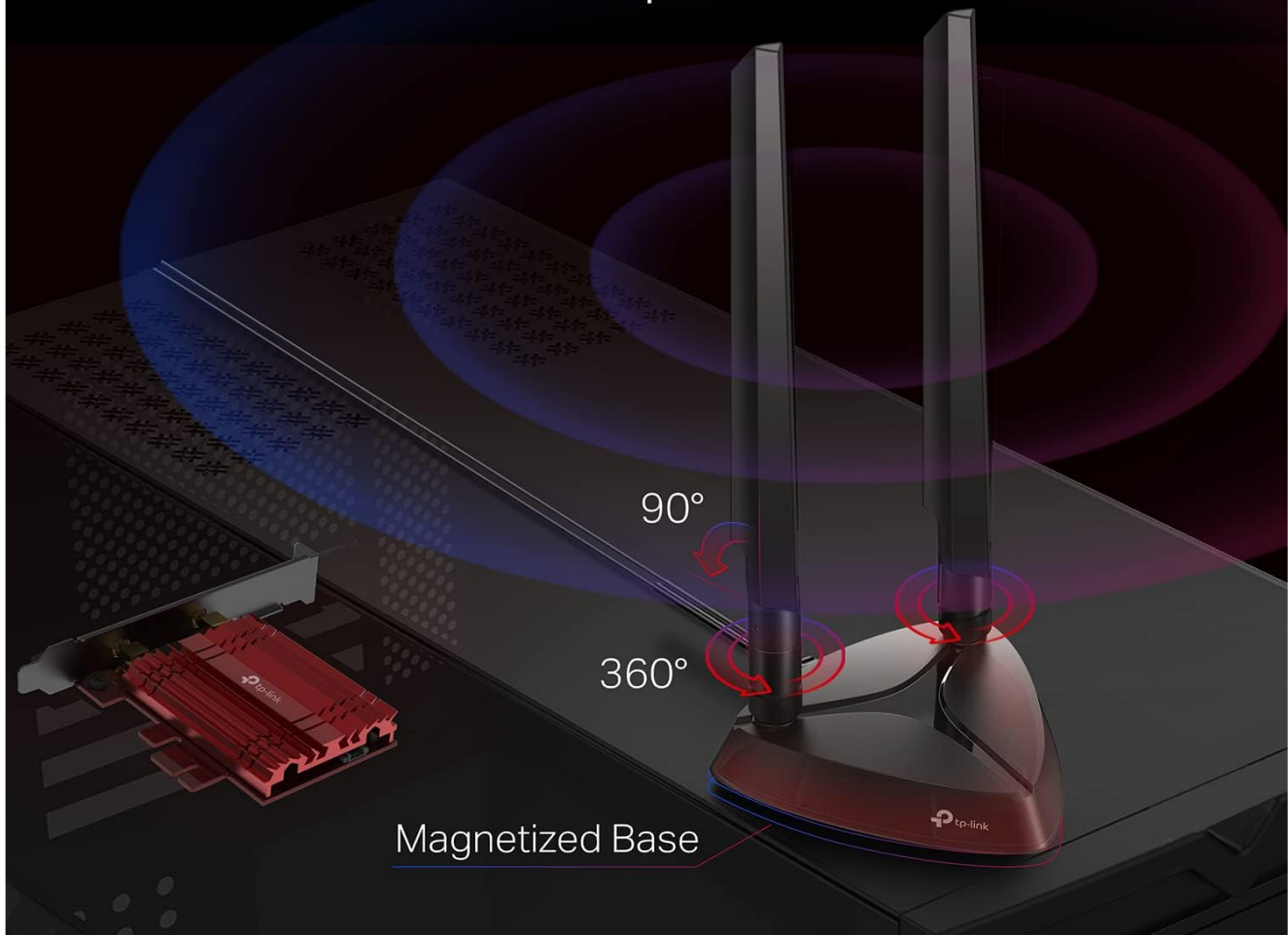


Figure 4: The magnetic antenna base offers flexible placement for improved reception.

4.5 Driver Installation

After physical installation, close your computer case, plug in the power cable, and turn on your computer.

1. **Using the Resource CD:** Insert the provided Resource CD into your computer's CD/DVD drive and follow the on-screen instructions to install the Wi-Fi and Bluetooth drivers.
2. **Downloading Drivers:** If your computer does not have a CD/DVD drive, or if you prefer the latest drivers, visit the official TP-Link website (www.tp-link.com) and download the drivers for the Archer TXE75E.

Windows 10 and Windows 11 typically install basic drivers automatically, but installing the official drivers ensures full functionality and optimal performance.

Your browser does not support the video tag.

Video 1: Official TP-Link PCIe Wifi Card Set Up Video. This video demonstrates the installation process for the TP-Link PCIe WiFi card.

5. OPERATING INSTRUCTIONS

5.1 Connecting to Wi-Fi

1. After driver installation, click the Wi-Fi icon in your system tray.
2. Select your desired Wi-Fi network (2.4 GHz, 5 GHz, or 6 GHz if available) and click 'Connect'.
3. Enter the network security key (password) if prompted.

5.2 Bluetooth Pairing

1. Ensure the Bluetooth USB cable is correctly connected to your motherboard.
2. Go to Windows Settings > Devices > Bluetooth & other devices.
3. Turn on Bluetooth and click 'Add Bluetooth or other device'.
4. Select 'Bluetooth' and choose your device from the list to pair.

6. MAINTENANCE

- **Driver Updates:** Regularly check the TP-Link website for the latest drivers to ensure optimal performance and compatibility.
- **Firmware Updates:** While the packaging may indicate Bluetooth 5.2, you can update the firmware from the TP-Link website to support Bluetooth 5.3.
- **Physical Inspection:** Periodically check antenna connections and the PCIe card seating to ensure they are secure.

7. TROUBLESHOOTING

- **Wi-Fi Not Detected/Connecting:**
 - Ensure the adapter is correctly seated in the PCIe slot.
 - Verify antennas are securely attached.
 - Reinstall or update Wi-Fi drivers.
 - Check if your router is broadcasting the correct Wi-Fi bands (2.4/5/6 GHz).
- **6GHz Wi-Fi Not Working:**
 - Ensure your operating system is Windows 11.
 - Confirm your router supports Wi-Fi 6E and 6GHz band.
 - Update drivers to the latest version.
- **Bluetooth Not Working:**
 - Ensure the Bluetooth USB cable is securely connected to both the adapter and an F_USB connector on the motherboard.
 - Install or update Bluetooth drivers.
 - Check Windows Bluetooth settings to ensure it's enabled.
- **Slow Speeds:**
 - Ensure you are connected to a Wi-Fi 6E compatible router for optimal speeds.
 - Check for interference from other devices.
 - Adjust antenna position for better signal reception.
 - Update drivers.

8. SPECIFICATIONS

Feature	Description
Brand	TP-Link
Model	Archer TXE75E
Wireless Standard	Wi-Fi 6E (802.11ax)
Bluetooth Version	Bluetooth 5.3
Interface	PCIe X1
Data Transfer Rate	Up to 5400 Mbps (2402 Mbps on 6 GHz, 2402 Mbps on 5 GHz, 574 Mbps on 2.4 GHz)
Antenna	Two high-gain multi-directional antennas with magnetized base
Security	WPA3
Operating System	Windows 10 (64-bit), Windows 11
Dimensions (L x W x H)	3.75 x 4.76 x 0.85 inches
Item Weight	9.4 ounces

9. WARRANTY AND SUPPORT

For warranty information, technical support, and further assistance, please visit the official TP-Link website or contact their customer support:



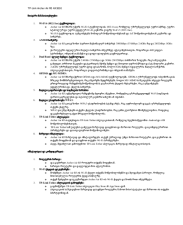


- **Website:** www.tp-link.com
- **Support Page:** support.tp-link.com
- **Phone Support:** (866) 225-8139 (for US customers)

Please retain your purchase receipt for warranty claims.

© 2025 TP-Link. All rights reserved.

Related Documents - Archer TXE75E

 	<p>TP-Link Archer TBE400E BE6500 Wi-Fi 7 Bluetooth PCIe Adapter User Guide</p> <p>This user guide provides comprehensive information for the TP-Link Archer TBE400E BE6500 Wi-Fi 7 and Bluetooth 5.4 PCIe adapter, covering installation, setup, usage, and troubleshooting for Windows 11 systems.</p>
--	---

	<p>TP-Link Archer TX50E User Guide: AX3000 Wi-Fi 6 & Bluetooth 5.0 PCIe Adapter</p> <p>Comprehensive user guide for the TP-Link Archer TX50E AX3000 Wi-Fi 6 and Bluetooth 5.0 PCIe adapter. Includes installation, driver setup, connectivity, troubleshooting, and regulatory information.</p>
	<p>TP-Link AX3000 Wi-Fi 6 Bluetooth 5.0 PCIe Adapter Archer TX50E</p> <p>Discover the TP-Link Archer TX50E, an AX3000 Wi-Fi 6 and Bluetooth 5.0 PCIe adapter designed to upgrade your PC's wireless connectivity. Featuring high speeds, low latency, enhanced security, and broad compatibility, it's ideal for gaming, streaming, and general use.</p>
	<p>TP-Link Archer Air R5 AX3000: მთავარი მახასიათებლები და ინსტალაცია</p> <p>დეტალური მიმოხილვა TP-Link Archer Air R5 AX3000 Wi-Fi 6 როუტერის შესახებ, რომელიც მოიცავს მის ძირითად მახასიათებლებს, როგორიცაა AX3000 სიჩქარე, ორმაგი ზოლის მხარდაჭერა, OFDMA, MU-MIMO, WPA3 უსაფრთხოება და TP-Link Tether აპლიკაციის დაყენება.</p>
	<p>TP-Link AC1200 Wi-Fi Bluetooth PCIe Adapter User Guide</p> <p>Comprehensive user guide for the TP-Link AC1200 Wi-Fi Bluetooth PCIe Adapter (Archer T4E/T5E), covering installation, connection, usage, troubleshooting, and compliance information.</p>
	<p>TP-Link Archer TBE553E WLAN Bluetooth PCI Express Adapter Installation Guide</p> <p>Step-by-step installation guide for the TP-Link Archer TBE553E Wi-Fi 7 and Bluetooth PCI Express adapter, including setup, driver installation, network connection, and troubleshooting for Windows.</p>