

Mcbazel INSP0173

Mcbazel Sync Button Flex Cable and Screwdriver Set for Nintendo Switch / Switch OLED Joy-Con SL/SR Repair

MODEL: INSP0173

Brand: Mcbazel

Introduction

This instruction manual provides guidance for replacing the SL/SR button flex cables on Nintendo Switch and Nintendo Switch OLED Joy-Con controllers. This kit includes the necessary flex cables and specialized screwdrivers to facilitate the repair process.

Important Compatibility Note: This product is compatible with Nintendo Switch and Nintendo Switch OLED Joy-Cons. It is NOT compatible with Switch 2.



SL/SR Sync Button Flex Cable +Screwdriver "+"and "Y" **Fix Your Damaged Joy-Con**

Perfect for Nintendo Switch

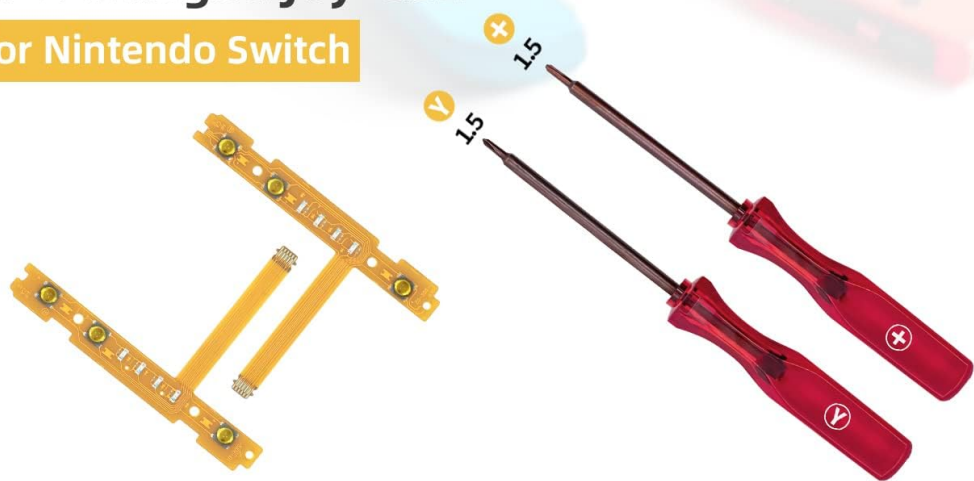


Image: Compatibility chart for the repair kit, indicating support for Nintendo Switch and Switch OLED, but not for Switch 2.

Package Contents

The Mcbazel Sync Button Flex Cable and Screwdriver Set includes the following components:

- 1 x SL/SR Sync Button Flex Cable Set (for Left and Right Joy-Con)
- 1 x "+" (Phillips) 1.5mm Screwdriver
- 1 x "Y" (Tri-Wing) 1.5mm Screwdriver

Package Includes

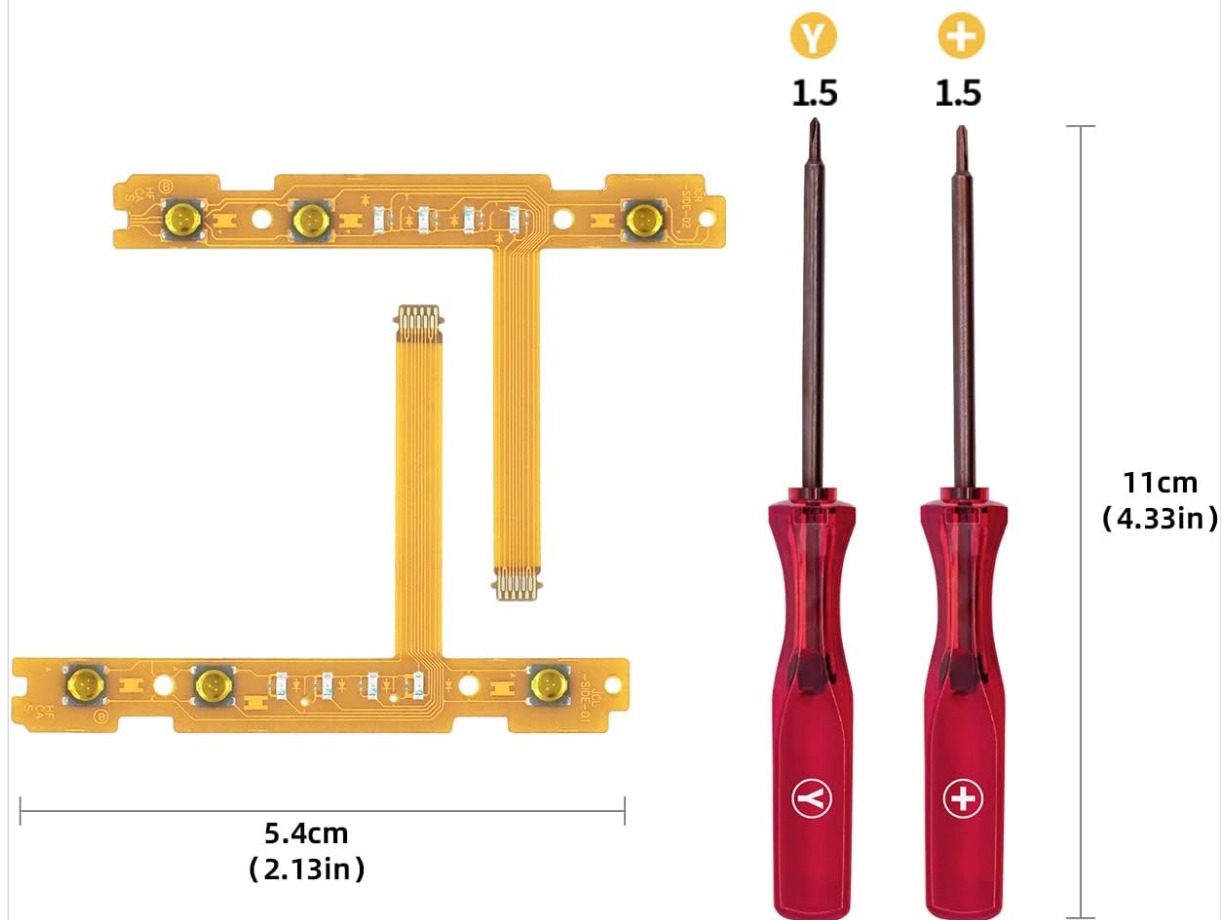


Image: The complete package contents, including the SL/SR flex cables and the two specialized screwdrivers.

The included screwdrivers feature magnetic tips to assist in handling small screws during the repair process.



Magnetic Tip

Easily to hold tiny screws



Image: A screwdriver with a magnetic tip, shown holding several small screws, illustrating its utility for precision work.

Installation Instructions

This section outlines the steps required to replace the SL/SR button flex cable in your Nintendo Switch Joy-Con. Exercise caution and precision throughout the process, as internal components are delicate.

1. Step 1: Open the Joy-Con Casing

Using the included "Y" (Tri-Wing) screwdriver, carefully remove the screws located on the back of the Joy-Con controller.



Use the "Y" screwdriver to remove the screws on the back of Joy-Con

Image: A hand holding a red-handled 'Y' screwdriver, unscrewing one of the tri-wing screws on the rear casing of a blue Joy-Con.

2. Step 2: Remove the Internal Battery

Once the back casing is open, carefully disconnect and remove the internal battery. This provides access to the internal components.

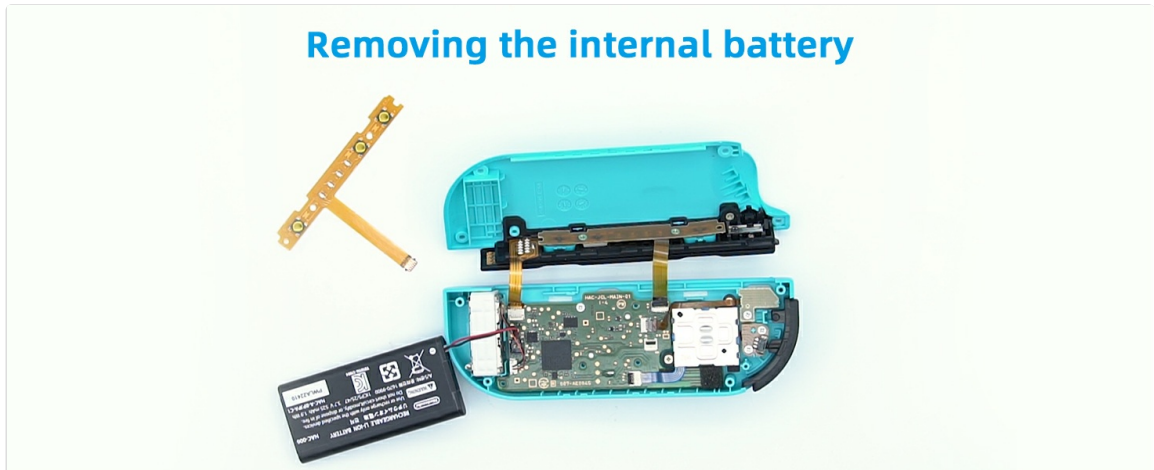


Image: An opened Joy-Con controller, with its blue casing separated and the internal battery carefully removed, revealing the circuit board and flex cable.

3. Step 3: Remove the Original Button Flex Cable

Using the included "+" (Phillips) screwdriver, remove any screws securing the old flex cable. Carefully detach the old flex cable from its connectors. Note the orientation of the original cable for correct installation of the new one.

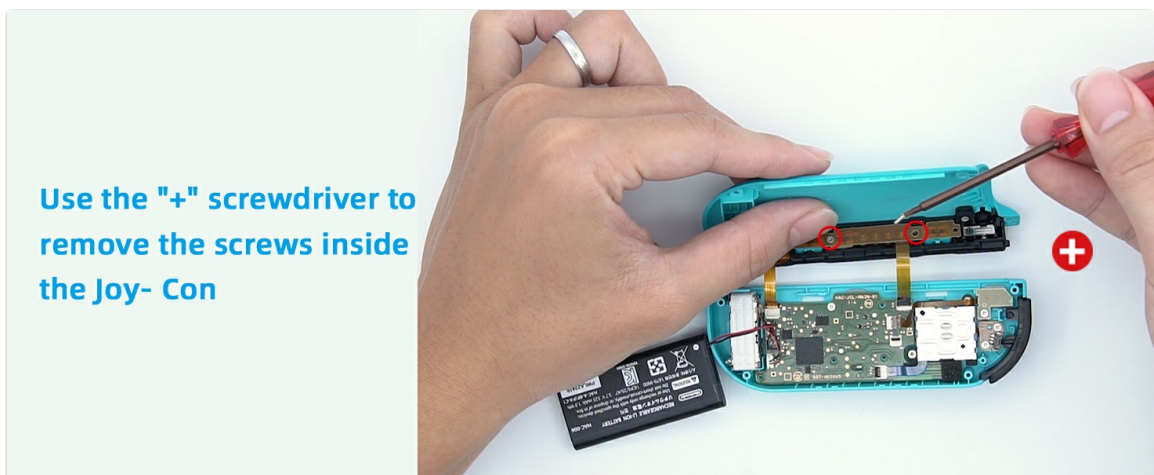


Image: A hand using a red-handled '+' screwdriver to carefully remove small screws that secure the existing flex cable within the opened Joy-Con controller.

4. Step 4: Install the New Button Flex Cable

Carefully position the new SL/SR button flex cable into place, ensuring it aligns correctly with the connectors. Secure it with the screws previously removed in Step 3. Reconnect the battery and close the Joy-Con casing, securing it with the "Y" screwdriver.



Image: A hand using precision tweezers to carefully place the new button flex cable onto the circuit board inside the opened Joy-Con controller.

For a visual guide, an installation video may be available on the manufacturer's official website or support channels. Search for "Mcbazel Joy-Con SL/SR Flex Cable Installation" for additional assistance.

Operating the Repaired Joy-Con

After successful installation, the SL and SR buttons on your Joy-Con controller should function as intended. Test all buttons and connectivity to ensure the repair was successful.

Maintenance

No specific maintenance is required for the flex cables themselves. To prolong the life of your Joy-Cons and internal components:

- Avoid dropping or subjecting the controllers to strong impacts.
- Keep controllers clean and free from dust and debris.
- Store in a dry environment away from extreme temperatures.

Troubleshooting

If the SL/SR buttons do not function correctly after installation, consider the following:

- **Cable Connection:** Ensure the flex cable is securely and correctly seated in its connectors. These connectors are very small and require precise alignment.
- **Cable Damage:** Inspect the new flex cable for any bends, tears, or damage that may have occurred during installation.
- **Battery Reconnection:** Verify that the Joy-Con battery is properly reconnected.
- **Tooling:** Some users find that specialized fine-tip tweezers are helpful for handling the delicate ribbon cables and connectors. While not included in this kit, they can aid in precise installation.
- **Reassembly:** Double-check that all screws are tightened appropriately, but do not overtighten to avoid stripping.

If issues persist, it is recommended to review the installation steps carefully or seek professional assistance.

Specifications

Component	Specification
Product Dimensions	15 x 1.15 x 10 cm
Product Weight	20 g
"+" Screwdriver Bit Size	1.5 mm
"Y" Screwdriver Bit Size	1.5 mm
Manufacturer Reference	INSP0173

Warranty and Support

For information regarding product warranty or technical support, please refer to the official Mcbazel website or contact their customer service directly. You can visit the [Mcbazel Store on Amazon](#) for more details or to find contact information.

Documents - Mcbazel – INSP0173

no relevant documents