

## Hikity Y3070B1

# Hikity Y3070B1 USB DVR Dashcam

Instruction Manual

Model: Y3070B1 | Brand: Hikity

## 1. INTRODUCTION

Thank you for choosing the Hikity Y3070B1 USB DVR Dashcam. This device is designed to enhance your driving safety and provide reliable video recording of your journeys. It features Full HD 1080P resolution, a 170° wide-angle lens, loop recording, G-sensor functionality, and Advanced Driving Assistance Systems (ADAS).

This manual provides detailed instructions for the proper installation, operation, and maintenance of your dashcam. Please read it thoroughly before use and keep it for future reference.

## 2. PRODUCT OVERVIEW

### 2.1 Key Features

- **Full HD 1080P Resolution:** Captures clear and detailed video footage.
- **170° Wide-Angle Lens:** Provides an expansive view, covering multiple lanes and minimizing blind spots.
- **Seamless Loop Recording:** Automatically overwrites older footage when the memory card is full, ensuring continuous recording without missing frames. Locked videos are protected.
- **G-Sensor:** Automatically detects collisions and locks the current video footage to prevent overwriting.
- **ADAS (Advanced Driving Assistance Systems):** Includes Lane Departure Warning System (LDWS) and Forward Collision Warning System (FCWS) for enhanced driving safety.
- **WDR Function:** Wide Dynamic Range allows the camera to capture clear details in both low-light and brightly lit areas.
- **Easy USB Installation:** Plugs directly into the USB port of most Android-based car stereos for convenient setup and viewing.

### 2.2 Package Contents

- 1 x Hikity USB Car DVR HD Dashcam
- 1 x 5M Video Power Cable

## 2.3 Product Components and Dimensions

# Installation Effect



Image: Detailed view of the Hikity Y3070B1 Dashcam, showing its dimensions (80mm length, 50mm width, 30mm height, 10mm thickness) and various angles including the camera lens, indicator light, and identification area. The camera lens features free rotation.

# Sensor with Loop Recording

Adopting all new intelligent overlapping technology, it can automatically overwrite the previous video when the memory card is full, thus realizing loop recording without missing frames.



Image: Illustration of the dashcam's TF card slot for memory card insertion and removal. The image also depicts the concept of loop recording, showing how older footage is overwritten by new recordings when the memory card is full.

## 3. SETUP & INSTALLATION

### 3.1 Memory Card Installation

1. Ensure the dashcam is powered off.
2. Locate the TF card slot on the side of the dashcam (refer to Product Components image).
3. Insert a Class 10 or higher Micro SD card (up to 32GB, not included) into the slot until it clicks into place.
4. To remove, gently push the card until it springs out.

### 3.2 Mounting the Dashcam

## 170 °Wide Angel Lens

170 "Wide Angel Lens makes the shooting range extended to four lanes. Viewing the whole world from a larger perspective.

170°

140°

120°

120°

140°

170°



Image: Examples of the Hikity Y3070B1 Dashcam mounted on a car windshield, showing its discreet placement near the rearview mirror and the view from the driver's perspective.

1. Clean the area on your windshield where you intend to mount the dashcam.
2. Attach the dashcam to the windshield using the provided adhesive mount. Ensure it is placed in a position that does not obstruct your view of the road.
3. Adjust the camera lens angle to capture the desired field of view (170° wide angle).

### 3.3 Connecting to an Android Car Stereo

# Sensor with Loop Recording

Adopting all new intelligent overlapping technology, it can automatically overwrite the previous video when the memory card is full, thus realizing loop recording without missing frames.



Image: The Hikity Y3070B1 Dashcam connected via USB to an Android car stereo, illustrating the simple plug-and-play setup. Icons below represent key features: Full HD 1080P, 32G SD support, G-sensor, 24-hour monitoring, HDR WDR, Loop video, ADAS, 170° wide angle, motion detection, and USB interface.

1. Connect the provided 5M USB video power cable to the dashcam.
2. Plug the other end of the USB cable into an available USB port on your Android-based car stereo.
3. The dashcam should be automatically recognized by the car stereo. You may need to install a specific application on your Android stereo to access the dashcam's features and live view. Refer to your car stereo's manual for app installation instructions.

## 4. OPERATING INSTRUCTIONS

### 4.1 Power On/Off

- The dashcam typically powers on automatically when your vehicle's ignition is turned on and the car stereo receives power.
- It will power off automatically when the vehicle's ignition is turned off.

### 4.2 Recording Modes

- **Continuous Loop Recording:** Once powered on, the dashcam will automatically begin recording. Videos are saved in segments (e.g., 1, 3, or 5 minutes) and stored on the Micro SD card. When the card is full, the oldest unlocked files are overwritten.
- **G-Sensor (Emergency Recording):** In the event of a sudden impact or collision, the built-in G-sensor will detect the event and automatically lock the current video segment, protecting it from being overwritten by loop recording.

### 4.3 ADAS Functions

## Product Wiring & More Function



Full HD  
1080P



Support  
32G SD



G-sensor



24-hour  
monitoring



HDR WDR



Loop video



ADAS



170° wide angle



Montion  
Detection



USB interface

Image: Visual representation of the ADAS (Advanced Driver Assistance System) features, including ADAS Warning for potential forward collisions and LDWS Reminder for lane departure warnings, enhancing driving safety.

- **Lane Departure Warning System (LDWS):** Provides alerts if your vehicle drifts out of its lane without signaling.
- **Forward Collision Warning System (FCWS):** Warns you if you are approaching the vehicle ahead too quickly, helping to prevent rear-end collisions.
- *Note: ADAS features require proper calibration and may depend on the specific Android car stereo application.*

### 4.4 Viewing Recordings

- You can view recorded videos directly on your Android car stereo through the dedicated dashcam application.
- Alternatively, remove the Micro SD card from the dashcam and insert it into a computer or compatible device to view the files.

## 5. MAINTENANCE

### 5.1 Memory Card Management

- Regularly format the Micro SD card (e.g., once a month) to ensure optimal performance and prevent data corruption. This can usually be done through the dashcam's settings via the Android car stereo app.
- Back up important video files to another storage device before formatting.
- Replace the Micro SD card if you notice frequent errors or degraded performance.

### 5.2 Cleaning

- Use a soft, dry cloth to clean the dashcam lens and body.
- Do not use abrasive cleaners or solvents, as they may damage the device.

## 6. TROUBLESHOOTING

Problem	Possible Cause	Solution
Dashcam does not power on.	No power from USB port; loose connection.	Check USB cable connection. Ensure car stereo is powered on. Try a different USB port.
Recording stops or freezes.	Memory card full; slow memory card; card error.	Format the Micro SD card. Use a Class 10 or higher card. Replace the memory card if issues persist.
Video quality is poor.	Dirty lens; incorrect settings; low light conditions.	Clean the camera lens. Check video resolution settings in the app. WDR function helps in varied lighting.
ADAS features not working.	Improper calibration; app not installed/updated; environmental factors.	Ensure the dashcam is properly calibrated through the Android app. Update the app if necessary. ADAS performance can be affected by weather or road conditions.
Cannot view recordings on car stereo.	App not installed; app error; file format incompatibility.	Install or update the dashcam application on your Android stereo. Check if the app supports the video file format.

## 7. SPECIFICATIONS

Feature	Detail
Model Name	Y3070B1
Image Sensor	1/4" Color Sensor
Video Recording Resolution	1080P Full HD

<b>Feature</b>	<b>Detail</b>
Lens Angle	170° Wide Angle
Video Output	1.0 Vp-p, 75 Ohm
TV System	NTSC and PAL
Minimum Illumination	<0.5 Lux
Waterproof Rating	IP66
Operating Temperature	-20°C to +80°C
Storage Temperature	-30°C to +80°C
Working Power (DCV)	12V
Current Consumption	90mA max.
Dimensions (D x W x H)	5 cm x 8 cm x 3 cm
Weight	32 Grams
Connectivity Technology	USB
Mounting Type	Windshield Mount
Supported Memory Card	Micro SD (up to 32GB, Class 10 or higher)

# ADAS Advanced Driver Assistance System



ADAS Warning



LDWS Reminder

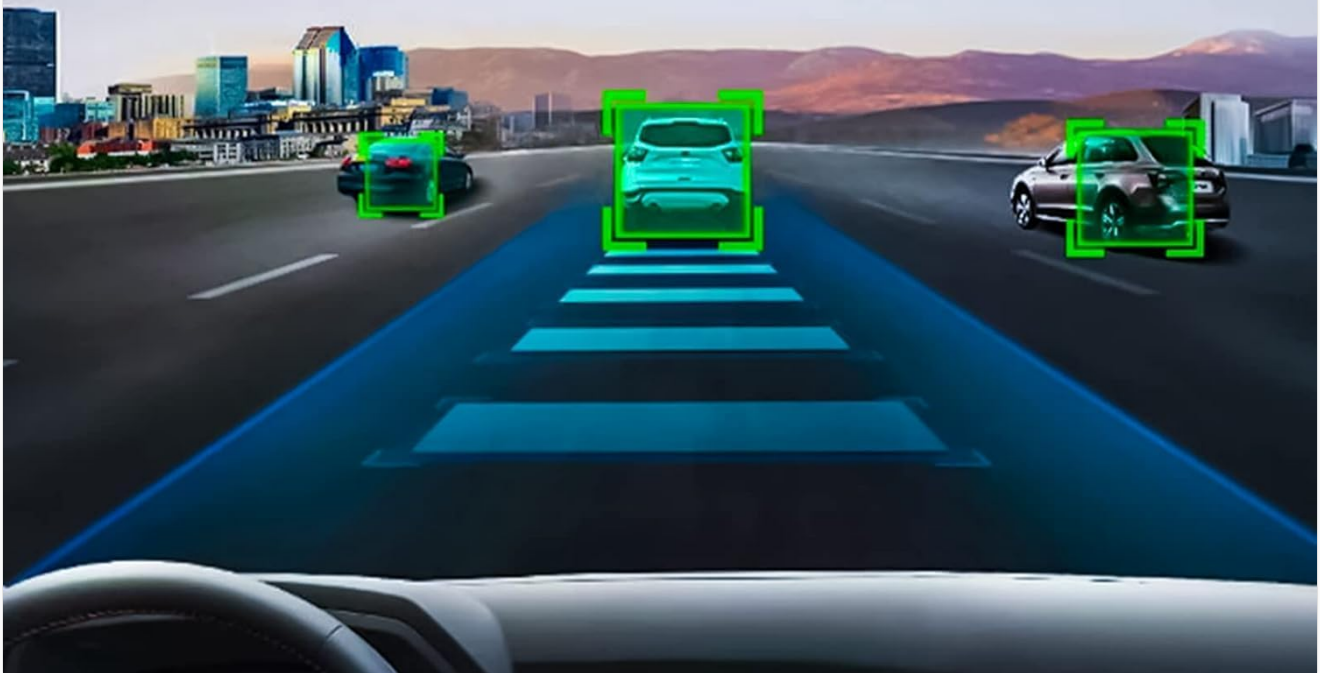


Image: Comparison of day and night recording quality, demonstrating the 1080P high definition capture capability of the Hikity Y3070B1 Dashcam in various lighting conditions.



## 1080P High Definition

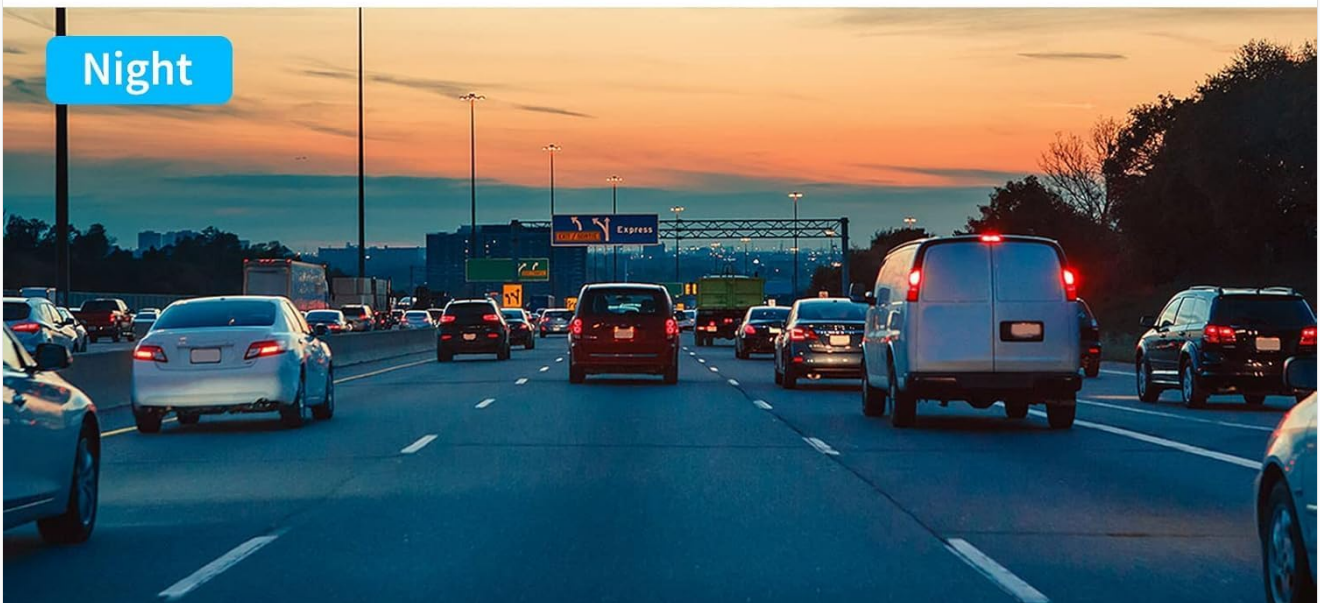


Image: Illustration of the 170-degree wide-angle lens, showing how it extends the field of view to cover four lanes, providing a broader perspective of the road.

## 8. WARRANTY AND SUPPORT

### 8.1 Warranty Information

The Hikity Y3070B1 USB DVR Dashcam comes with a **2-year limited warranty** from the date of purchase. This warranty covers manufacturing defects and malfunctions under normal use. It does not cover damage caused by misuse, accidents, unauthorized modifications, or natural disasters.

Please retain your proof of purchase for warranty claims.

### 8.2 Customer Support

For technical assistance, warranty claims, or any questions regarding your Hikity dashcam, please contact Hikity customer support. Refer to the contact information provided with your product packaging or visit the official Hikity website for support details.

Hikity is committed to providing attentive service and protecting customer interests.

