

HUDAMZKY M14

HUDAMZKY E-Bike Hub Motor Axle Nut and Washer Set (M14)

Instruction Manual

1. INTRODUCTION

This manual provides essential information for the installation and maintenance of your HUDAMZKY E-Bike Hub Motor Axle Nut and Washer Set, Model M14. This set is designed for replacing electric bike hub motor nuts, typically used with 500W-5000W motors featuring 12mm or 14mm axles. Please read these instructions carefully before installation to ensure proper function and safety.

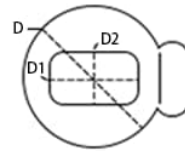
2. PRODUCT COMPONENTS

The HUDAMZKY E-Bike Hub Motor Axle Nut and Washer Set (M14) includes the following components:

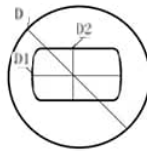
- **Hex Nuts:** Two M14 hex nuts, typically gold-colored, for securing the motor axle.
- **Flat Washers:** Two flat washers, typically gold-colored, to distribute the load of the fastener.
- **Anti-Rotation Washers:** Two anti-rotation washers, typically gold-colored, designed to prevent the axle from rotating.
- **Rubber Protective Caps:** Two black rubber caps to cover and protect the nuts and axle ends.
- **Connector:** One white plastic connector, likely for motor wiring protection or connection.
- **Spacer Ring:** One silver metal spacer ring.



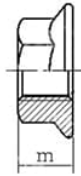
M-14



**D1: 14mm
D2: 10mm
D: 24mm
H: 3mm**



**D1: 14mm
D2: 10mm
D: 23.6mm
H: 2.7mm**



**s: 13.7mm
d: 26.5mm
m: 13mm**

Image 2.1: Overview of all components included in the M14 set, showing nuts, washers, rubber caps, connector, and spacer ring.



Image 2.2: Close-up view of the M14 hex nuts, flat washers, and anti-rotation washers.

3. SPECIFICATIONS

The HUDAMZKY E-Bike Hub Motor Axle Nut and Washer Set (M14) is manufactured from high-quality steel for durability and sturdiness. The rubber caps provide additional protection.

- **Material:** Steel (nuts, washers, ring), Rubber (caps), Plastic (connector)
- **Color:** Black (caps), Gold/Silver (nuts, washers, ring), White (connector)
- **Weight:** Approximately 20g per set.
- **Compatibility:** Designed for electric bike hub motors with 12mm or 14mm axles, typically in the 500W-5000W range.
- **Thread Size:** M14 (for nuts).
- **Washer Dimensions (Approximate):**
 - Inner Square Hole: 10.5mm x 10.5mm
 - Outer Diameter: 14.4mm

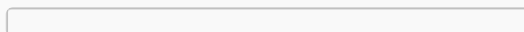


Image 3.1: Detailed dimensional diagram of the M14 washers and nuts, showing inner and outer measurements.

4. SETUP AND INSTALLATION

Follow these steps to properly install the HUDAMZKY E-Bike Hub Motor Axle Nut and Washer Set:

1. **Preparation:** Ensure your e-bike is powered off and secured. If replacing existing nuts and washers, carefully remove them.

2. **Axle Compatibility Check:** Verify that your motor's axle is compatible with M14 nuts and washers (typically 12mm or 14mm axle diameter).
3. **Washer Placement:** Place the flat washer onto the motor axle, followed by the anti-rotation washer. Ensure the anti-rotation washer's tab aligns with any corresponding slot on the motor or frame to prevent rotation.
4. **Nut Installation:** Thread the M14 hex nut onto the motor axle. Tighten securely using an appropriate wrench. Do not overtighten, as this can damage the axle or motor.
5. **Protective Cap Installation:** Once the nuts are tightened, place the rubber protective caps over the nuts and axle ends. These caps help protect against dirt, moisture, and physical damage.
6. **Wiring Connector (if applicable):** If your motor wiring requires protection or connection, use the provided white plastic connector as needed.



Image 4.1: The rubber protective caps and an example of a cap installed on an e-bike hub motor axle.



Image 4.2: The complete set of components and a detailed view of a protective cap properly installed on an e-bike hub motor axle.

Installation Video Guide

Your browser does not support the video tag.

Video 4.1: An official video demonstrating the components and their general application for an E-Bike Hub Motor Screw set. This video provides a visual guide to the parts and their basic handling.

5. OPERATING

Once properly installed, the HUDAMZKY E-Bike Hub Motor Axle Nut and Washer Set functions to securely fasten the e-bike hub motor to the frame. The anti-rotation washers prevent the axle from spinning within the dropouts, which is crucial for maintaining motor alignment and preventing damage. The protective caps shield the nuts and axle ends from environmental elements and potential impacts.

6. MAINTENANCE

- **Regular Inspection:** Periodically check the nuts for tightness and ensure the washers are correctly seated.
- **Cleanliness:** Keep the nuts, washers, and protective caps free from dirt and debris. Clean with a

damp cloth if necessary.

- **Damage Check:** Inspect the rubber caps for any tears or damage. Replace if compromised to maintain protection.
- **Corrosion:** While made of steel, prolonged exposure to harsh conditions can lead to corrosion. Consider applying a thin layer of grease to the threads if operating in wet or corrosive environments.

7. TROUBLESHOOTING

- **Loose Nuts:** If nuts become loose, re-tighten them to the manufacturer's recommended torque specifications for your e-bike motor.
- **Axle Rotation:** Ensure the anti-rotation washers are correctly installed and their tabs are engaged with the frame's dropouts. Incorrect installation can lead to axle rotation.
- **Incompatible Fit:** Verify that the M14 size is appropriate for your e-bike motor's axle. This set is designed for 12mm or 14mm axles.

8. WARRANTY AND SUPPORT

Information regarding product warranty and customer support was not provided in the source data. Please refer to the product packaging or contact the retailer for details on warranty coverage and support options.