

WEEFUN Tina2 Basic V7

WEEFUN TINA2 Mini 3D Printer

Instruction Manual - Model: Tina2 Basic V7

1. INTRODUCTION

Welcome to the WEEFUN TINA2 Mini 3D Printer instruction manual. This guide provides essential information for setting up, operating, maintaining, and troubleshooting your new 3D printer. The TINA2 is designed for beginners and features auto-leveling, resume printing, and a flexible magnetic build plate, making 3D printing accessible and enjoyable.

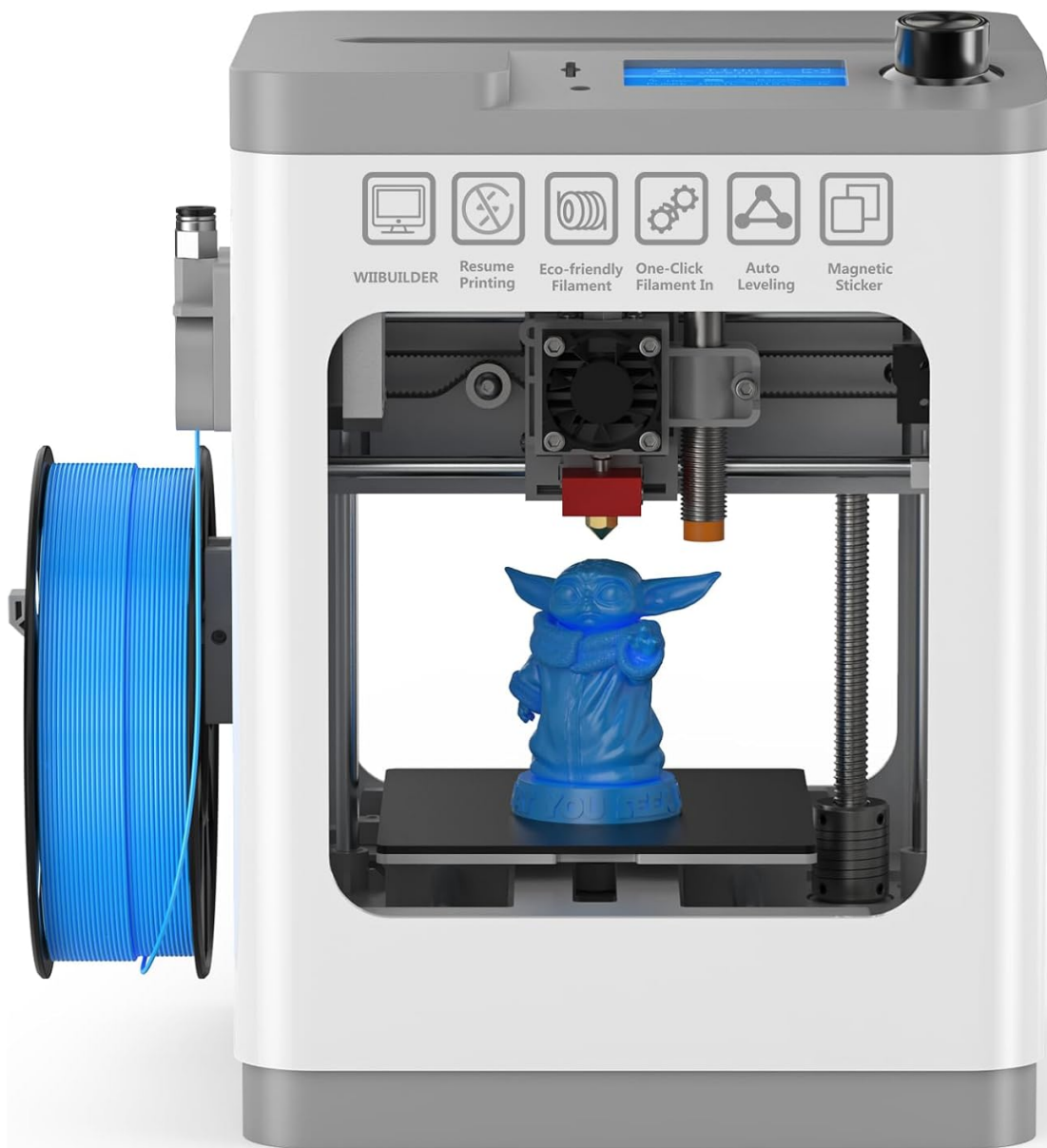


Figure 1.1: The WEEFUN TINA2 Mini 3D Printer, showcasing its compact design and a printed model.

WEEFUN TINA2 3D Printer

Enjoy 3D Printing, Enjoy Creating



Figure 1.2: The WEEFUN TINA2 3D Printer in a home or office setting, emphasizing its user-friendly nature for creative projects.

2. SAFETY INFORMATION

Please read all safety instructions carefully before operating the printer to prevent injury or damage. Keep this manual for future reference.

- **Moving Parts:** The printer contains moving parts that can cause injury. Keep hands, hair, and clothing clear of the print head and build plate during operation.
- **Hot Surfaces:** The nozzle and build plate can reach high temperatures. Avoid touching these components during or immediately after printing. Allow them to cool completely before handling.
- **Ventilation:** Operate the printer in a well-ventilated area to dissipate any fumes from melting filament.
- **Power Supply:** Use only the provided power adapter. Ensure the power outlet meets the specified voltage requirements.
- **Children:** This product is not a toy. Children should only operate the printer under direct adult

supervision.

- **Filament:** Use only recommended filament types. Incorrect filament can damage the printer or produce hazardous fumes.

3. PRODUCT COMPONENTS

Familiarize yourself with the main components of your WEEFUN TINA2 Mini 3D Printer:

- **Print Head (Extruder):** Dispenses melted filament.
- **Build Plate:** The surface where models are printed.
- **Filament Holder:** Holds the filament spool.
- **LCD Screen & Control Knob:** For navigating menus and controlling printer functions.
- **Power Port:** Connects to the power adapter.
- **SD Card Slot:** For loading print files.
- **USB Port:** For connecting to a computer (USB cable not included).

MULTI-FUNCTION 3D PRINTER

Thoughtful Design, Easy to Use



Figure 3.1: Overview of the multi-function features of the TINA2 Mini 3D Printer.

4. SETUP

The WEEFUN TINA2 Mini 3D Printer comes fully assembled for a quick and easy setup process.

4.1 Unpacking

1. Carefully remove the printer from its packaging.
2. Remove all protective foam and ties.
3. Ensure all accessories (power adapter, filament, SD card) are present.

4.2 Power Connection

- Connect the power adapter to the printer's power port.
- Plug the power adapter into a suitable electrical outlet.

4.3 Filament Loading

1. Place the filament spool onto the filament holder.
2. Feed the filament into the extruder's input hole until it is gripped by the gears.
3. On the printer's LCD screen, select "Load Filament" and follow the on-screen prompts. The printer will heat up and automatically feed the filament through the nozzle.

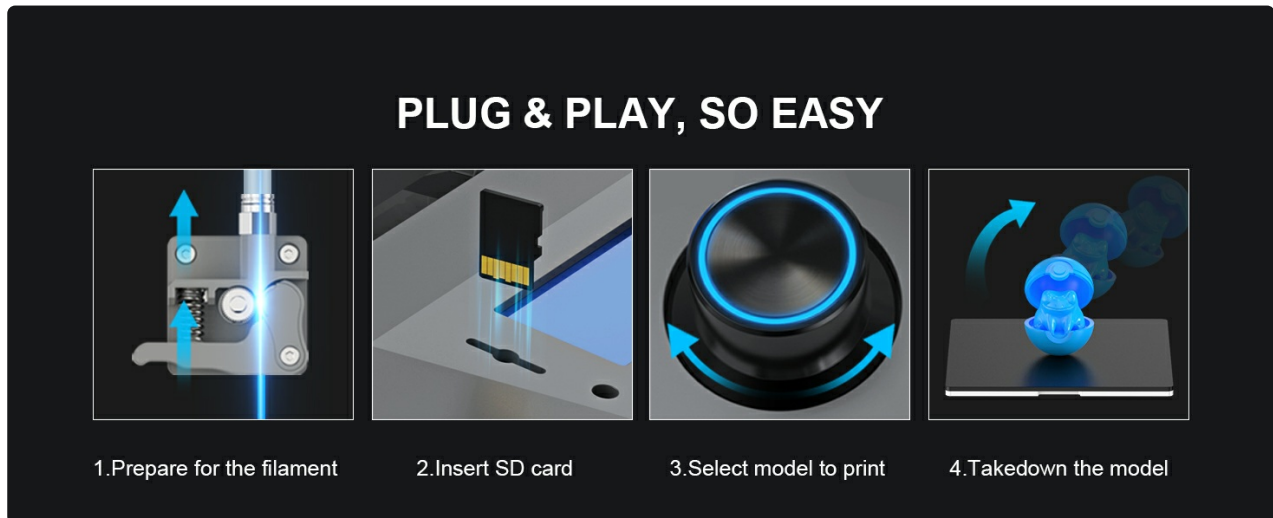


Figure 4.1: Quick guide to the plug-and-play setup and printing process.

4.4 Auto-Leveling

The TINA2 features an automatic bed leveling system. No manual adjustment is required for initial setup.

- The printer will perform an auto-leveling sequence before each print to ensure optimal bed adhesion.

AUTO-LEVELING FUNCTION



No Manual Adjustment



Smart-Leveling Calibration



Easy to Use



More Precision

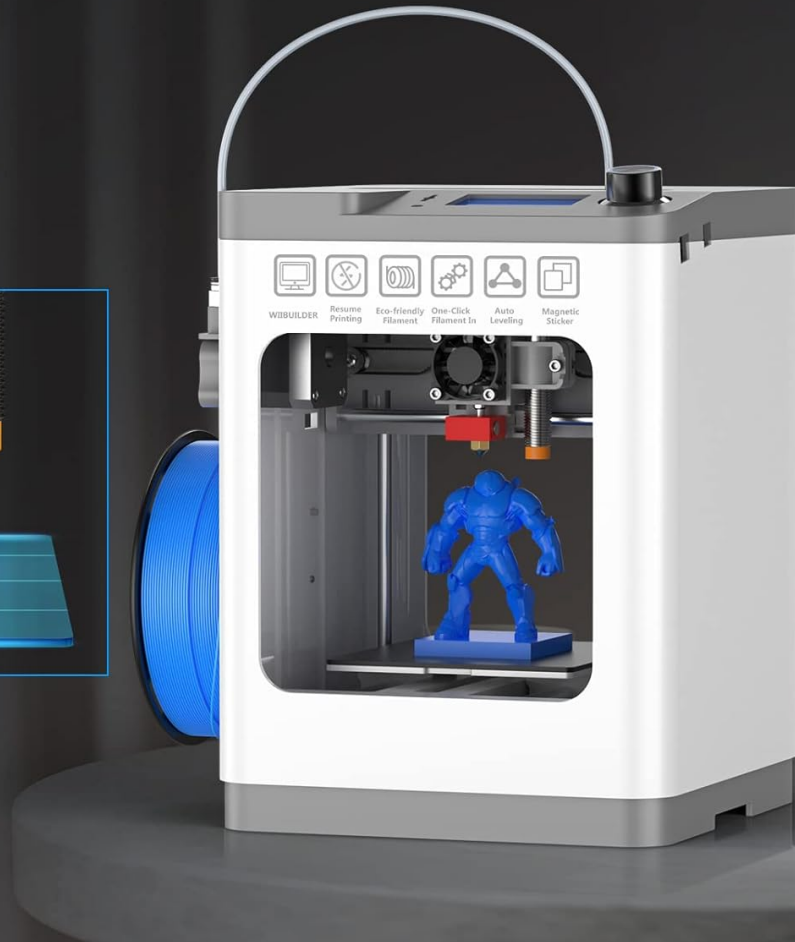
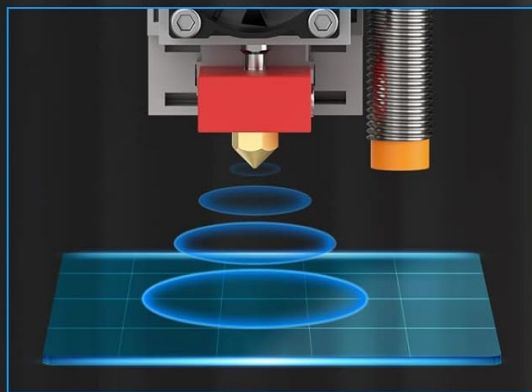


Figure 4.2: The auto-leveling function ensures precise first layers without manual calibration.

5. OPERATING INSTRUCTIONS

5.1 Preparing a Print File

- The printer supports G-code files. You will need a 3D modeling software and a slicer program (e.g., Cura, PrusaSlicer) to convert 3D models (.STL, .OBJ) into G-code.
- Save the G-code file to the provided SD card.

PRINTING METHOD

Print by SD Card or USB Cable (USB cable is not including in the package)



SOFTWARE: Kiri(Chrome book)/PrusaSlicer
COMPATIBILITY: Windows/MacOS/Linux

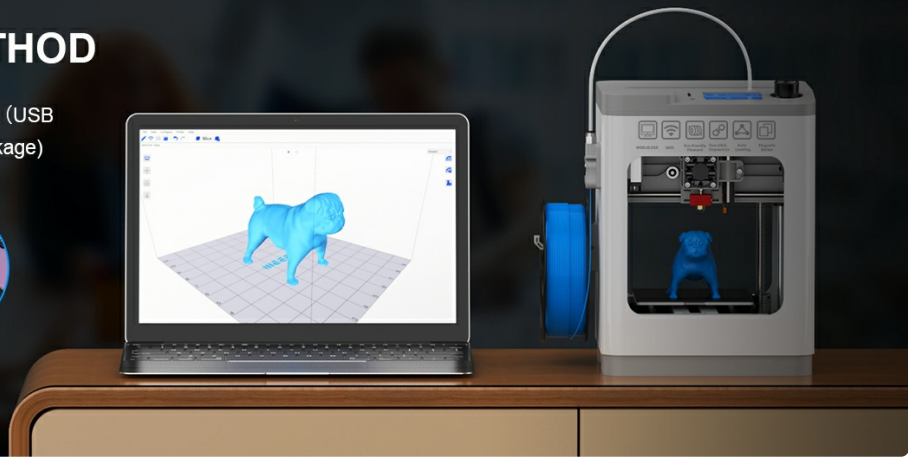


Figure 5.1: The printer supports printing via SD card or USB cable (USB cable not included).

5.2 Starting a Print

1. Insert the SD card into the printer's SD card slot.
2. Turn on the printer.
3. Using the control knob and LCD screen, navigate to "Print from SD" and select your desired G-code file.
4. The printer will begin the auto-leveling sequence, heat up, and then start printing.

LCD SCREEN & KNOB

Multi-Language Optional, HD LCD Screen with Rotary Knob, Easy to Read & Use



Figure 5.2: The HD LCD screen and rotary knob provide an easy-to-use interface for beginners.

5.3 Resume Printing Function

The TINA2 features a resume printing function, allowing it to continue a print from where it left off after a power outage or accidental disconnection.

- If power is interrupted during a print, simply restore power. The printer will prompt you to resume the last print.

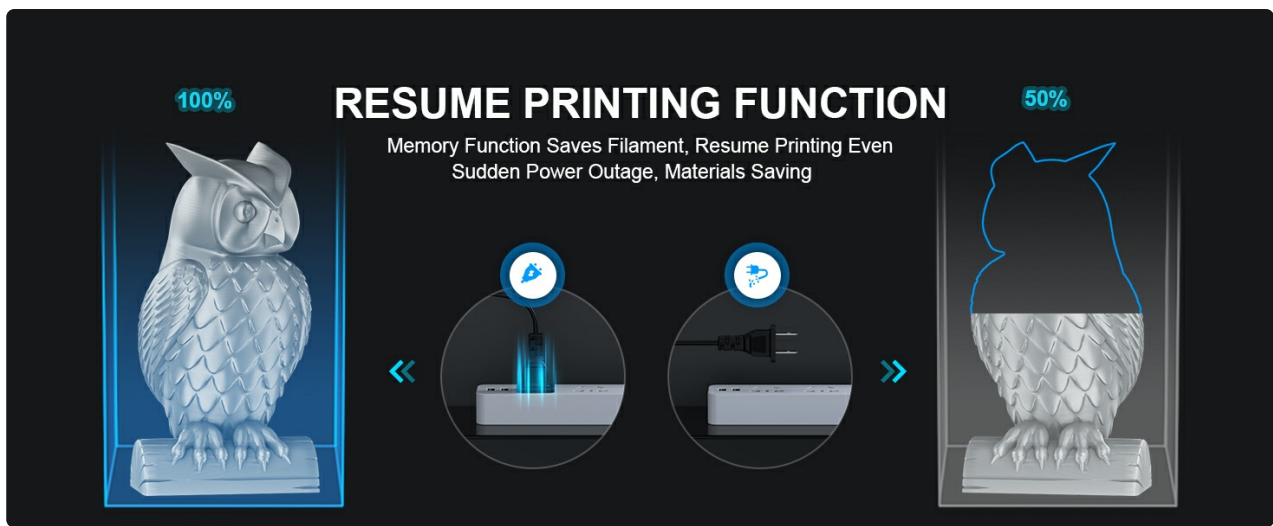


Figure 5.3: The memory function saves filament and allows printing to resume after a sudden power outage.

5.4 Removing a Print

The flexible magnetic build plate makes removing finished prints easy.

- Once the print is complete and the build plate has cooled, gently remove the magnetic build plate from the printer.
- Flex the build plate to easily detach the printed model.

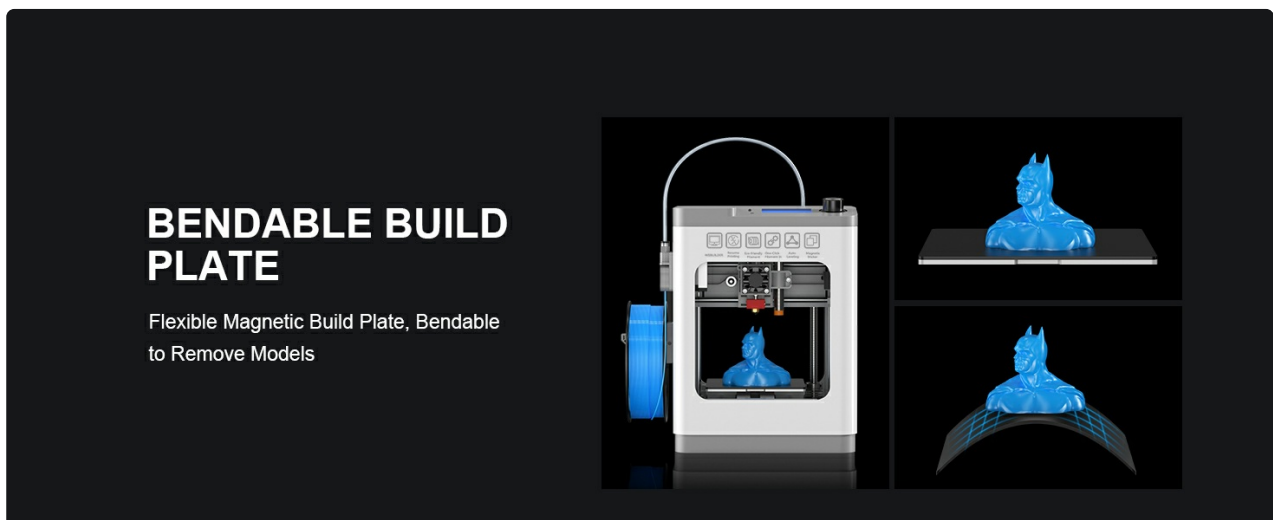


Figure 5.4: The bendable build plate simplifies the removal of printed models.

6. MAINTENANCE

Regular maintenance ensures optimal performance and longevity of your 3D printer.

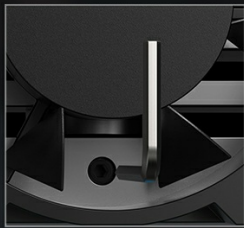
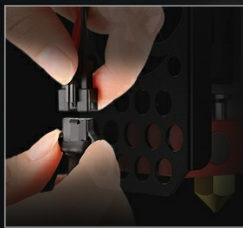
6.1 Cleaning the Build Plate

- After each print, ensure the build plate is clean and free of any filament residue. Use a soft cloth and isopropyl alcohol if necessary.

6.2 Nozzle Cleaning and Replacement

- If the nozzle becomes clogged, gently heat it to printing temperature and use a thin needle or cleaning filament to clear the obstruction.

- For severe clogs or worn nozzles, replacement may be necessary. Refer to the manufacturer's guidelines for nozzle replacement.



Unique Design for Convenience, Fast Disassem the Nozzle Hot End



Figure 6.1: The nozzle hot end is designed for easy disassembly for maintenance.

6.3 Lubrication

- Periodically check the Z-axis lead screw and X/Y axis rods for dust or debris. Clean and apply a small amount of lithium grease or machine oil if needed to ensure smooth movement.

7. TROUBLESHOOTING

This section addresses common issues you might encounter and their potential solutions.

Problem	Possible Cause	Solution
Filament not extruding	Clogged nozzle, incorrect temperature, tangled filament.	Clean the nozzle, verify print temperature settings, ensure filament spool unwinds freely.
Print not sticking to build plate	Build plate not clean, Z-offset too high, bed temperature too low.	Clean build plate with isopropyl alcohol, ensure auto-leveling completes, check bed temperature settings.
Poor print quality (layer shifting, stringing)	Loose belts, incorrect print speed, retraction settings.	Check for loose belts, adjust print speed in slicer, fine-tune retraction settings.
Printer not turning on	Power cable disconnected, faulty power adapter.	Ensure power cable is securely connected, try a different power outlet, contact support if issue persists.

8. SPECIFICATIONS

Feature	Detail
Model Number	Tina2 Basic V7
Brand	WEEFUN
Product Dimensions	8.27"D x 8.27"W x 11.42"H (approx. 210 x 210 x 290 mm)
Item Weight	3 pounds (1.36 kg)
Printing Technology	FDM (Fused Deposition Modeling)
Compatible Filament	PLA
Build Plate	Flexible Magnetic Build Plate
Leveling	Automatic Leveling
Connectivity	SD Card, USB (cable not included)
Special Features	Resume Printing Function, Fully Assembled, Open Source

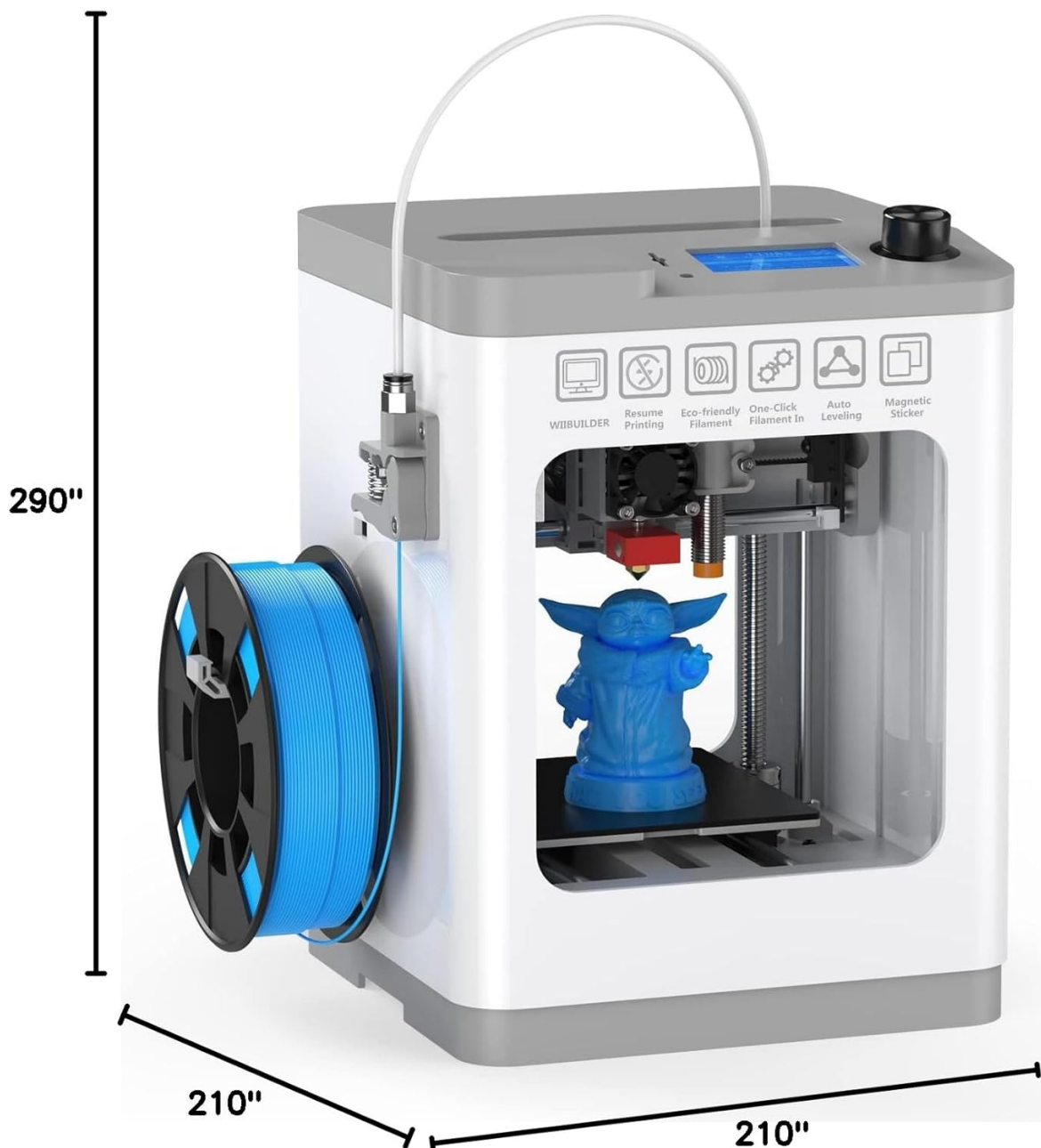


Figure 8.1: Physical dimensions of the TINA2 Mini 3D Printer (approximately 210mm x 210mm x 290mm).

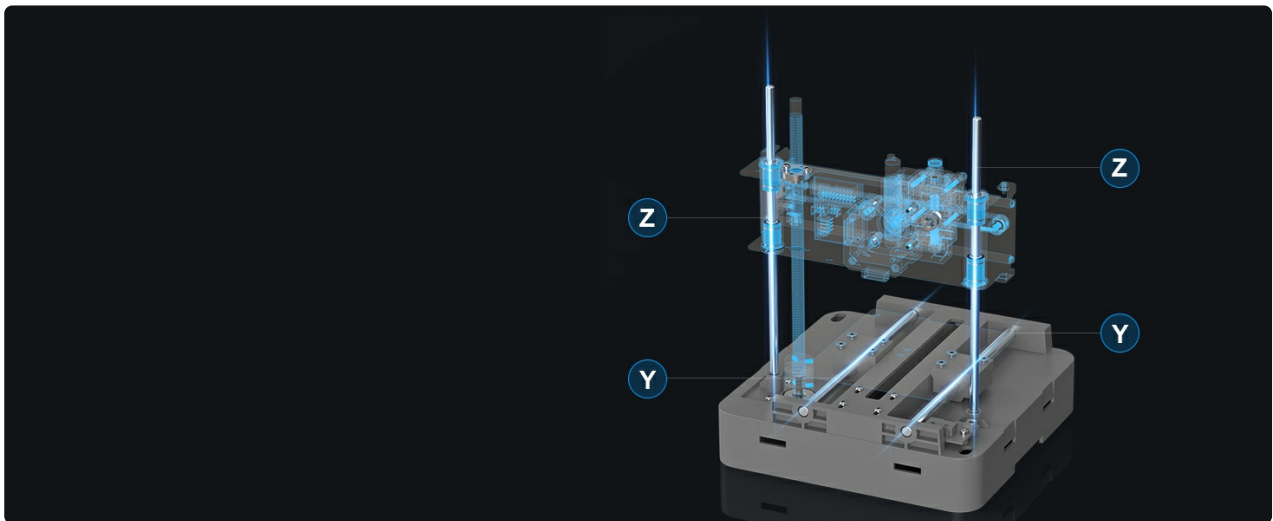


Figure 8.2: Internal structure highlighting the dual Z-axis and Y-axis for stability and precision.

9. WARRANTY INFORMATION

WEEFUN provides a limited warranty for the TINA2 Mini 3D Printer against defects in materials and workmanship under normal use. The warranty period typically begins from the date of purchase. Please retain your proof of purchase for warranty claims.

This warranty does not cover:

- Damage caused by improper use, maintenance, or unauthorized modifications.
- Consumable parts such as nozzles, build plates, and filament.
- Damage due to accidents, neglect, or natural disasters.

For detailed warranty terms and conditions, please refer to the official WEEFUN website or contact customer support.

10. CUSTOMER SUPPORT

If you encounter any issues or have questions not covered in this manual, please contact WEEFUN customer support. Our team is dedicated to providing assistance and ensuring your satisfaction.

- **Online Support:** Visit the official WEEFUN website for FAQs, troubleshooting guides, and software downloads.
- **Email Support:** For technical assistance, email our support team.
- **Community Forums:** Join online communities for tips, tricks, and peer support.

Please have your printer's model number (Tina2 Basic V7) and purchase information ready when contacting support.

