



Manuals.plus /

› Simsen /

› SIMSEN Dehumidifier User Manual

Simsen CT-2

SIMSEN Dehumidifier User Manual

Model: CT-2

Brand: Simsen

1. INTRODUCTION

Thank you for choosing the SIMSEN 95oz Dehumidifier. This compact and efficient dehumidifier is designed to improve air quality and create a healthier, more comfortable living environment by effectively reducing humidity in spaces up to 720 sq ft. It features quiet operation, two working modes, and convenient auto-off functionality.

Please read this manual thoroughly before operating the dehumidifier to ensure proper use, maintenance, and safety.

2. PRODUCT FEATURES

- **High Efficient Dehumidification:** Equipped with a double dehumidification condenser, this unit can remove up to 34oz (1000ml) of moisture per day in optimal conditions (86°F and 80% RH).
- **Safe & Smart Operation:** Features a 95oz (2800ml) water tank and an auto-off function that activates when the tank is full, indicated by a red light. Includes a drain hose for continuous drainage, eliminating the need for daily emptying.
- **Ultra Quiet & Two Working Modes:** Offers a high power mode for rapid dehumidification and a super quiet sleep mode (approx. 30dB) for undisturbed rest.
- **Colorful Atmosphere Light:** Integrated breathing atmosphere lights with 7 colors that change automatically. Users can pause on their preferred color or turn the lights off.
- **Versatile Application:** Ideal for rooms under 720 sq ft, including bedrooms, bathrooms, basements, closets, and RVs, helping to maintain humidity levels below 45%.

3. PRODUCT OVERVIEW AND COMPONENTS

Familiarize yourself with the main parts of your SIMSEN Dehumidifier.



Front view of the SIMSEN Dehumidifier, showing the control panel and water level indicator.



Dimensions of the SIMSEN Dehumidifier: 13.77 inches (H) x 8.26 inches (W) x 5.55 inches (D).

Included Components:

- SIMSEN Dehumidifier Unit
- Drain Hose
- User Manual (this document)

4. SETUP

1. **Unpacking:** Carefully remove the dehumidifier and all accessories from the packaging. Retain packaging for future storage or transport.
2. **Placement:** Place the dehumidifier on a flat, stable surface in the desired area. Ensure there is at least 8 inches of space around the unit for proper airflow. Avoid placing it directly against walls or furniture.
3. **Power Connection:** Plug the power cord into a suitable electrical outlet.
4. **Water Tank Installation:** Ensure the water tank is correctly inserted into the unit. The dehumidifier will not operate if the tank is not properly seated or is full.
5. **Continuous Drainage Setup (Optional):**
For continuous drainage, remove the plug from the drainage hole at the bottom of the water tank. Insert the provided drain hose firmly into the drainage hole. Route the hose to a suitable drain (e.g., floor drain, large bucket) ensuring it is sloped downwards to allow gravity drainage. Do not allow the hose to kink or be elevated above the unit.

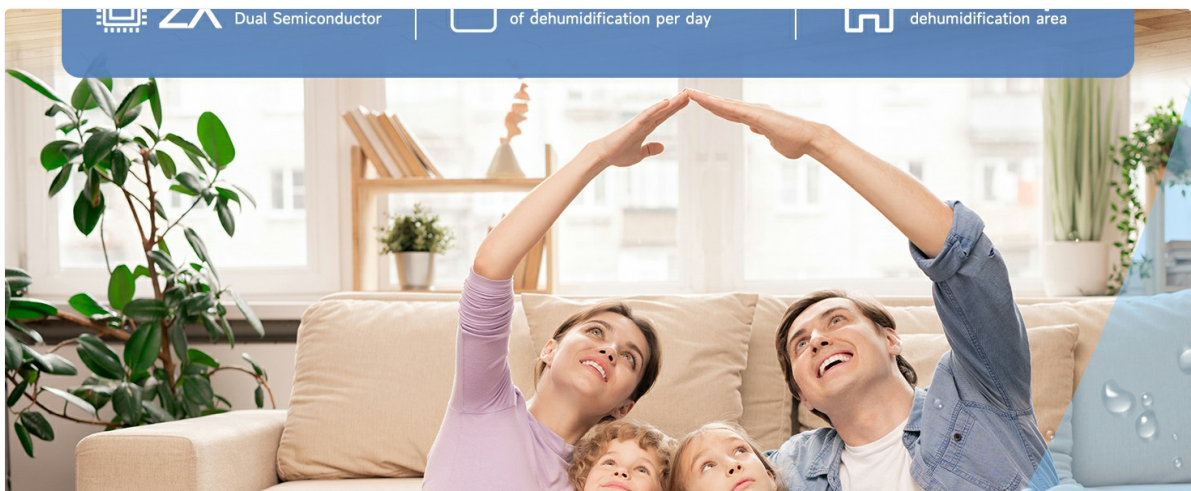


Illustration of setting up the continuous drainage hose for the dehumidifier.

5. OPERATING INSTRUCTIONS

Power On/Off:

- Press the power button () on the control panel to turn the unit on or off.

Working Modes:

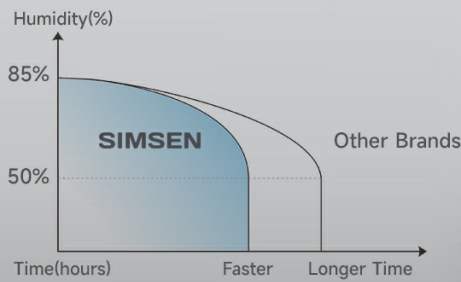
The dehumidifier offers two distinct working modes:

- **High Power Mode:** This is the default mode upon startup. It provides maximum dehumidification for quick moisture removal.
- **Sleep Mode:** Press the sleep button () to switch to sleep mode. In this mode, the fan speed is reduced for quieter operation (approx. 30dB), and all indicator lights are turned off to ensure a peaceful environment.

Suitable For Various Spaces

Application Area | Powerful Mode >>>

Suitable for spaces 30-720 sq.ft, maintains air humidity at good levels



Notice! The dehumidifier keeps the air humidity between 45% and 55% at most. The higher the surrounding humidity, the better the dehumidification effect.

Visual representation of the dehumidifier operating in Powerful Mode, showing dual condensation sheets.

Two Ways To Empty Your Water Tank

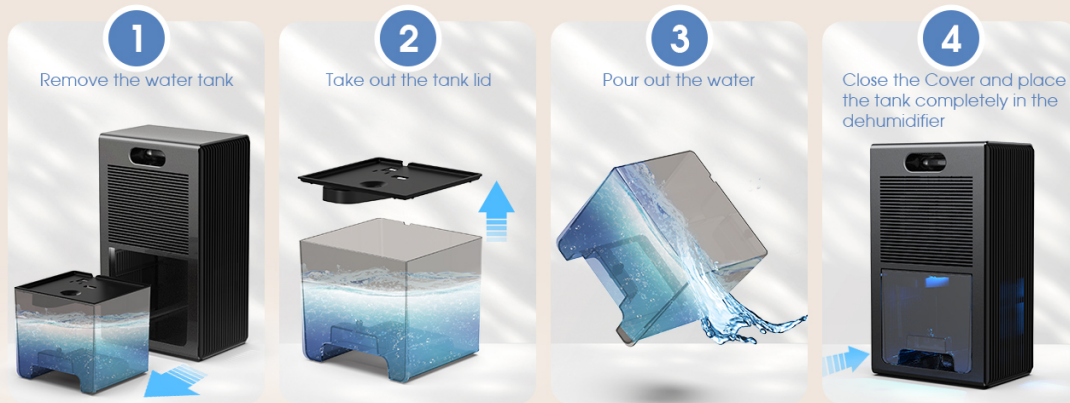
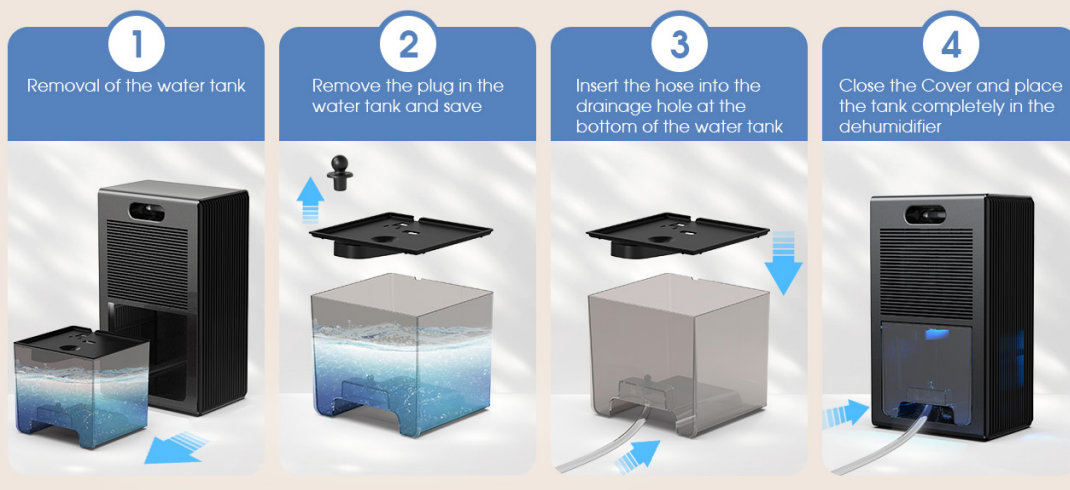


Illustration of the dehumidifier in Sleep Mode, highlighting its quiet operation compared to other environments.

Atmosphere Light Control:

- Press the light button () to switch the atmosphere lights on or off.
- The lights will cycle through 7 colors automatically. To pause on a specific color, press the light button again when your desired color is displayed.



Depiction of the dehumidifier's colorful atmosphere lights feature.

Auto Shut-off Function:

- When the water tank is full, the dehumidifier will automatically shut down to prevent overflow.
- A red warning light will flash, and the unit will beep to alert you that the water tank needs to be emptied.



Image showing the dehumidifier with a full water tank and the red warning light activated.

6. MAINTENANCE

Emptying the Water Tank:

If not using continuous drainage, the water tank will need to be emptied regularly.

1. Turn off the dehumidifier and unplug it from the power outlet.
2. Carefully pull out the water tank from the front of the unit.
3. Remove the tank lid and pour out the collected water.
4. Clean the tank with mild soap and water if necessary, then rinse thoroughly.
5. Replace the tank lid and slide the empty water tank back into the dehumidifier until it clicks into place.

Step-by-step guide for manually emptying the dehumidifier's water tank.

Cleaning the Air Filter:

Regular cleaning of the air filter is recommended to maintain optimal performance. (Note: Specific filter

location/removal not detailed in provided data, so keep general)

- Turn off and unplug the unit.
- Locate and remove the air filter (usually on the back or side).
- Clean the filter with a vacuum cleaner or wash it with warm, soapy water. Ensure it is completely dry before reinstalling.
- Reinstall the clean, dry filter.

Storage:

- If storing the unit for an extended period, ensure the water tank is empty and clean.
- Clean the exterior of the unit with a soft, damp cloth.
- Store the dehumidifier in a cool, dry place, preferably in its original packaging.

7. TROUBLESHOOTING

Problem	Possible Cause	Solution
Dehumidifier does not turn on.	No power; Water tank full or not properly seated.	Check power connection; Empty and re-seat water tank.
Unit is running but not collecting water.	Room humidity too low; Temperature too low; Air filter clogged.	Dehumidifiers work best in higher humidity; Ensure room temperature is within operating range (59-95°F); Clean air filter.
Unit is noisy.	Operating in High Power Mode; Unit not on a stable surface.	Switch to Sleep Mode for quieter operation; Place on a flat, stable surface.
Red light flashing.	Water tank is full.	Empty the water tank.

If the problem persists after trying the above solutions, please contact customer service.

8. SPECIFICATIONS

Specification	Value
Brand	Simsen
Model Name	CT2
Color	Space Grey
Floor Area Coverage	Up to 720 Square Feet
Water Tank Capacity	95 Fluid Ounces (2800ml)
Dehumidification Capacity	34oz (1000ml) per day (at 86°F, 80% RH)
Product Dimensions (D x W x H)	5.55"D x 8.26"W x 13.77"H
Item Weight	5.94 Pounds
Material	Plastic
Number of Speeds	2
Wattage	58 Watt-hours
Operation Modes	Efficient Dehumidification, Sleep, Colorful Light
Recommended Uses	Bedroom, Basement, Bathroom, Closet, RV
Upper Temperature Rating	104 Degrees Fahrenheit

9. WARRANTY AND CUSTOMER SUPPORT

SIMSEN dehumidifiers come with a **TWO-YEAR warranty** from the date of purchase. Additionally, we offer a **60-day free exchange and refund service**.

For any issues, questions, or technical support, please contact our customer service team directly. We provide lifetime customer service and tech support, available 24 hours a day to assist you.

Please refer to the original purchase documentation or the official SIMSEN website for contact information.

You can also find the official User Manual PDF [here](#).

10. IMPORTANT SAFETY INFORMATION

- Always unplug the dehumidifier before cleaning or performing any maintenance.
- Do not operate the unit with a damaged cord or plug.
- Do not block air inlets or outlets.

- Keep the unit away from water and other liquids.
- This appliance is not intended for use by persons (including children) with reduced physical, sensory or mental capabilities, or lack of experience and knowledge, unless they have been given supervision or instruction concerning use of the appliance by a person responsible for their safety.
- Children should be supervised to ensure that they do not play with the appliance.