

## Manuals+

[Q & A](#) | [Deep Search](#) | [Upload](#)

Manuals.plus /

› [MokerLink](#) /

› MokerLink 48 Port Gigabit Ethernet Switch with 2 SFP Port, Dual Power Supply, Fanless Metal Rackmount Unmanaged Plug and Play Network Switch 48xGE + 2SFP User Manual

## MokerLink 48xGE + 2SFP

# MokerLink 48 Port Gigabit Ethernet Switch User Manual

Model: 48xGE + 2SFP

## 1. INTRODUCTION

---

This manual provides detailed instructions for the installation, operation, and maintenance of the MokerLink 48 Port Gigabit Ethernet Switch (Model: 48xGE + 2SFP). This unmanaged network switch is designed for high-performance data transmission in various network environments, from home offices to data centers.

### Key Features:

- **Gigabit Ports:** 48 gigabit ethernet ports and 2 gigabit SFP ports, offering a switching capacity of 112Gbps for high data throughput. Supports 8K MAC address table for connecting numerous devices.
- **Dual Power Supply:** Features two built-in identical power supplies for redundant backup, ensuring continuous operation even if one power supply fails.
- **Easy to Use:** Unmanaged plug-and-play design requires no configuration; simply connect power and Ethernet cables.
- **Stable and Quiet:** Constructed with a durable metal housing and a fanless design for silent operation. Double-sided cooling holes ensure stable performance.
- **Versatile Application:** Suitable for desktop or rackmount placement, ideal for home, business, and data networks, supporting devices like IP cameras, Wireless Access Points, and other network devices.

## 2. PACKAGE CONTENTS

---

Verify that all items listed below are present in your product package. If any items are missing or damaged, please contact MokerLink support.

- MokerLink 48G Switch (Model: 48xGE + 2SFP)
- 2 x Power Cords
- Rackmount Kit
- Quick Installation Manual (This document serves as a comprehensive guide)

## 3. PRODUCT OVERVIEW

---

Familiarize yourself with the physical components and indicators of the MokerLink 48 Port Gigabit Ethernet Switch.

### 3.1 Front Panel



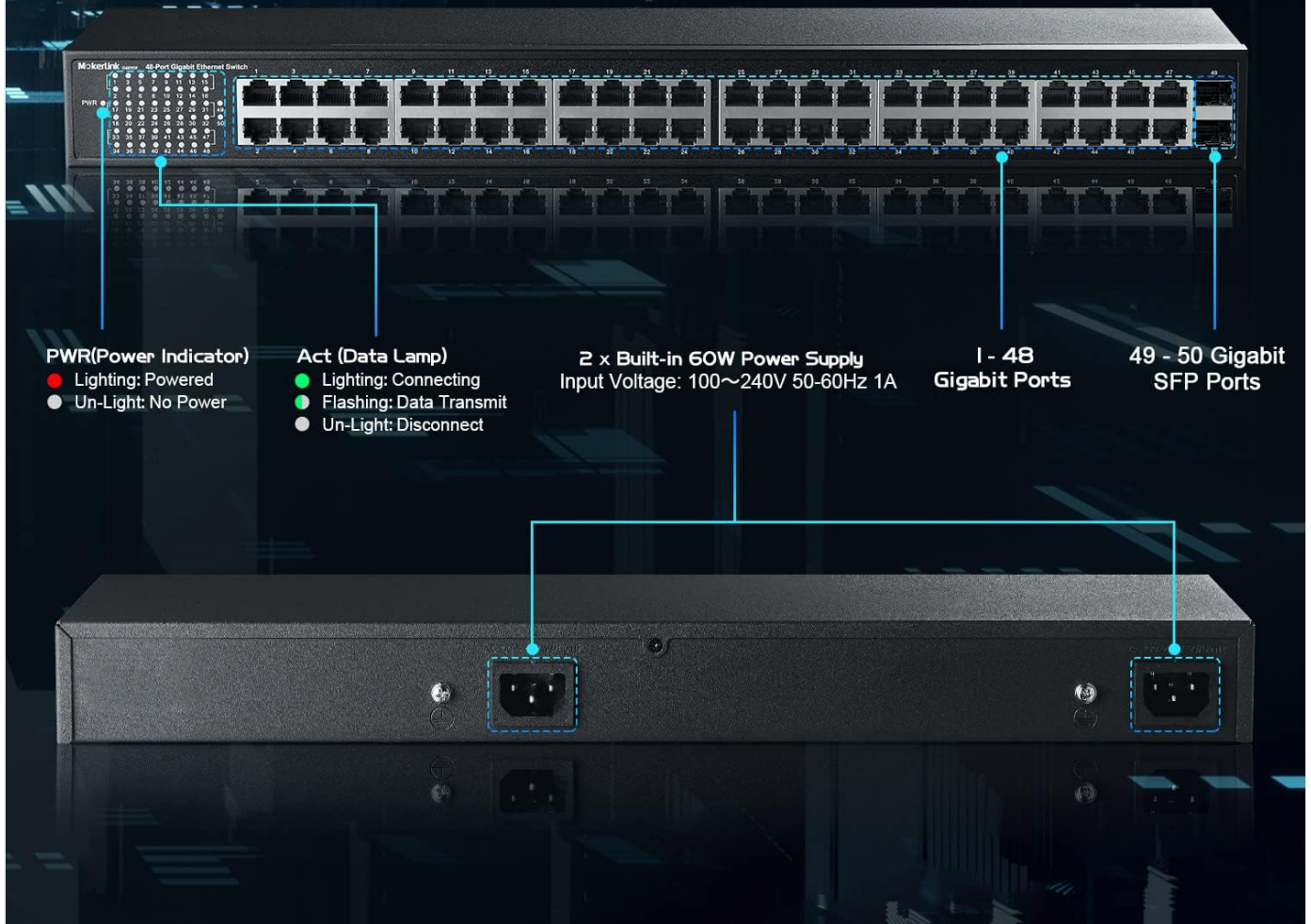
**Image Description:** This image displays the front panel of the MokerLink 48 Port Gigabit Ethernet Switch. It features 48 RJ45 Gigabit Ethernet ports and 2 SFP ports. On the left side, there are LED indicators for power and data activity for each port. The overall design is a black, rectangular metal chassis suitable for rack mounting.

- **Ethernet Ports (1-48):** Standard RJ45 ports for connecting network devices such as computers, servers, and other switches.
- **SFP Ports (49-50):** Two Gigabit SFP (Small Form-Factor Pluggable) ports for fiber optic connections, extending network reach or connecting to backbone devices.
- **LED Indicators:**
  - **PWR (Power Indicator):** Lights up when the switch is powered on.
  - **Act (Data Lamp):** Lights up when a link is established, flashes during data transmission.

### 3.2 Rear Panel

# 48-Port Gigabit Ethernet Switch with 2-Port SFP

## 48 Gigabit Port and Redundant Power Supply



**Image Description:** This image shows the rear panel of the MokerLink 48 Port Gigabit Ethernet Switch. It prominently features two power input sockets, highlighting the dual redundant power supply capability. Each socket is a standard IEC C14 inlet for power cords.

- **Power Inputs:** Two AC power inlets (100-240V, 50-60Hz) for connecting the included power cords. The dual inputs provide power redundancy.

## 4. SETUP

Follow these steps to properly set up your MokerLink 48 Port Gigabit Ethernet Switch.

### 4.1 Physical Installation

The switch can be placed on a desktop or mounted in a standard 19-inch equipment rack.

- **Desktop Placement:** Ensure the switch is placed on a stable, flat surface with adequate ventilation around the cooling holes.
- **Rackmount Installation:**

1. Attach the included rackmount brackets to the sides of the switch using the provided screws.
2. Secure the switch into a standard 19-inch equipment rack using appropriate rack screws. Ensure proper airflow within the rack.



**Image Description:** This image illustrates the MokerLink 48 Port Gigabit Ethernet Switch mounted within a standard 19-inch server rack. The diagram highlights the 1U height of the switch, demonstrating its compatibility with rack environments.

## 4.2 Power Connection

Connect the power cords to the switch and a power outlet.

1. Insert one end of the provided power cords into the power inlets on the rear panel of the switch.
2. Plug the other end of the power cords into a standard AC power outlet (100-240V, 50-60Hz).
3. The PWR LED on the front panel will illuminate, indicating that the switch is receiving power.



**Image Description:** This diagram illustrates the dual power supply setup for the MokerLink switch. It shows two power cords connected from a power strip to the two power inlets on the rear of the switch, emphasizing the redundant power feature. The diagram also indicates the power consumption details.

### 4.3 Network Connection

Connect your network devices to the switch.

1. Connect Ethernet cables from your network devices (e.g., computers, servers, routers, IP cameras, Wireless Access Points) to any of the 48 Gigabit Ethernet ports (1-48) on the front panel.
2. For fiber optic connections, insert compatible SFP modules (not included) into the SFP ports (49-50), then connect fiber optic cables to the SFP modules.
3. Once a device is connected and active, the corresponding Act LED for that port will illuminate and flash during data transmission.

# Easy to Use and Well Designed



6KV Port and 1.5KV Power  
Lightning Protection



Fanless, Noiseless Design



Plug and Play,  
No Configuration Required



**Image Description:** This image shows the MokerLink 48 Port Gigabit Ethernet Switch with multiple yellow Ethernet cables connected to its front panel ports. This visually represents the "Plug and Play" aspect and ease of connecting network devices.

## 5. OPERATING INSTRUCTIONS

The MokerLink 48 Port Gigabit Ethernet Switch is an unmanaged device, designed for simple plug-and-play operation.

- **Power On:** Once connected to power, the switch will automatically power on. The PWR LED will light up.
- **Automatic Configuration:** As an unmanaged switch, no software configuration is required. It automatically detects network speeds and duplex modes for connected devices.
- **Data Transmission:** When a device is connected and actively transmitting data, the corresponding Act LED will flash. A solid Act LED indicates a link is established but no data is currently being transmitted.
- **Redundant Power:** The dual power supply system ensures continuous operation. If one power source fails, the other will seamlessly take over, preventing network downtime.

## 6. MAINTENANCE

---

Proper maintenance ensures the longevity and optimal performance of your switch.

- **Cleaning:** Use a soft, dry cloth to clean the exterior of the switch. Do not use liquid or aerosol cleaners. Ensure the cooling vents are free from dust and obstructions.
- **Ventilation:** Maintain adequate space around the switch for proper airflow, especially around the cooling holes on the sides. Avoid placing the switch in enclosed spaces or near heat sources.
- **Environmental Conditions:** Operate the switch within recommended temperature and humidity ranges (refer to specifications). Avoid exposure to direct sunlight, excessive moisture, or extreme temperatures.
- **Cable Management:** Ensure all network and power cables are neatly organized and not excessively bent or strained to prevent damage and maintain reliable connections.

## 7. TROUBLESHOOTING

---

If you encounter issues with your MokerLink switch, refer to the following common troubleshooting steps.

Problem	Possible Cause	Solution
No Power (PWR LED Off)	<ul style="list-style-type: none"><li>• Power cord not properly connected.</li><li>• Power outlet not functioning.</li><li>• Faulty power cord.</li></ul>	<ul style="list-style-type: none"><li>• Ensure both power cords are securely plugged into the switch and a working power outlet.</li><li>• Test the power outlet with another device.</li><li>• Try different power cords.</li></ul>
No Link (Act LED Off)	<ul style="list-style-type: none"><li>• Ethernet cable not properly connected.</li><li>• Faulty Ethernet cable.</li><li>• Connected device is off or not functioning.</li><li>• Incorrect port used (e.g., SFP module not inserted).</li></ul>	<ul style="list-style-type: none"><li>• Ensure the Ethernet cable is securely connected to both the switch port and the device.</li><li>• Try a different Ethernet cable.</li><li>• Verify the connected device is powered on and functioning correctly.</li><li>• Ensure SFP modules are correctly inserted for fiber connections.</li></ul>
Slow Network Speed	<ul style="list-style-type: none"><li>• Cable quality or length issues.</li><li>• Network congestion.</li><li>• Connected device limitations.</li></ul>	<ul style="list-style-type: none"><li>• Use high-quality Cat5e/Cat6 or higher Ethernet cables.</li><li>• Ensure cable lengths are within standard limits.</li><li>• Check for other high-bandwidth activities on the network.</li><li>• Verify the capabilities of the connected devices.</li></ul>

If the problem persists after attempting these solutions, please contact MokerLink customer support for further assistance.

## 8. SPECIFICATIONS

---

Detailed technical specifications for the MokerLink 48 Port Gigabit Ethernet Switch.

Feature	Description
---------	-------------

Feature	Description
Model Number	48xGE + 2SFP
Number of Ports	48 x Gigabit Ethernet, 2 x Gigabit SFP
Switching Capacity	112 Gbps
MAC Address Table Size	8K
Jumbo Frame Support	9K
Data Transfer Rate	1000 Megabits Per Second (per port)
Power Supply	Dual Built-in 60W Power Supplies (100-240V AC, 50-60Hz)
Power Consumption (Full Load)	≤ 45W
Cooling	Fanless, Silent Design
Housing Material	Metal
Dimensions (L x W x H)	17.32" x 7.87" x 1.77" (440mm x 200mm x 45mm)
Item Weight	8.03 pounds (3.64 kg)
Mounting Options	Desktop, 19-inch Rackmount
Lightning Protection	6KV Port, 1.5KV Power

## 9. WARRANTY INFORMATION

---

MokerLink products are designed and manufactured to the highest quality standards. Specific warranty terms and conditions may vary by region and point of purchase.

For detailed warranty information, please refer to the warranty card included with your product, or visit the official MokerLink website. Keep your proof of purchase for warranty claims.

Optional protection plans may be available at the time of purchase.

## 10. SUPPORT

---

For technical support, product inquiries, or further assistance, please contact MokerLink customer service.

- **Online Resources:** Visit the official MokerLink website for FAQs, updated manuals, and support resources.
- **Contact Information:** Refer to the contact details provided on the MokerLink website or the product packaging.
- **Product Page:** You can find more information about this product and other MokerLink offerings at the [MokerLink Store on Amazon](#).

