

Manuals+

[Q & A](#) | [Deep Search](#) | [Upload](#)

[manuals.plus](#) /

› [alacrity](#) /

› [Alacrity NA-X6-CCD Bluetooth Barcode Scanner User Manual](#)

alacrity NA-X6-CCD

Alacrity NA-X6-CCD Bluetooth Barcode Scanner User Manual

Model: NA-X6-CCD

1. PRODUCT OVERVIEW

The Alacrity NA-X6-CCD is a portable mini 1D barcode scanner designed for versatile use across various platforms. It offers three connection methods: Bluetooth, 2.4GHz wireless, and USB wired, ensuring compatibility with Windows, Mac, Android, iOS, and Linux systems. Its compact design makes it suitable for mobile applications, while its robust features support both instant data upload and storage modes for efficient barcode management.



Image 1.1: The Alacrity NA-X6-CCD barcode scanner shown with its USB cable, 2.4G wireless dongle, and lanyard.

2. PACKAGE CONTENTS

Please verify that all items are present in the package:

- 1 x Alacrity NA-X6-CCD Barcode Scanner
- 1 x 2.4GHz Wireless Dongle
- 1 x USB Charging Cable (Type C)
- 1 x User Manual
- 1 x Lanyard

Drop Height:

Can sustain drops from up to 5ft



Image 2.1: Visual representation of the scanner, user guide, 2.4G wireless dongle, USB cable, and lanyard included in the package.

3. SETUP AND CONNECTIVITY

3.1. Charging the Scanner

The scanner is equipped with a 650mAh rechargeable Li-on battery. Before initial use, fully charge the device. A full charge typically takes approximately 3.5 hours and provides up to 24 hours of continuous working time or 30 days of standby time.

After 2 hours fully charged, 650mAh rechargeable battery can continuously work for 5 hours



Image 3.1: Diagram illustrating the 650mAh battery capacity, charging time of 3.5 hours, and continuous working time of 24 hours.

3.2. Connection Modes

The Alacrity NA-X6-CCD supports three distinct connection methods:

- **Bluetooth Connection:** For smartphones, tablets, and other Bluetooth-enabled devices.
- **2.4GHz Wireless Connection:** Utilizes the included dongle for PCs, POS machines, and laptops.
- **USB Wired Connection:** Allows operation while charging, providing a direct data link.

Support wired and wireless modes

Wired modes



Wireless modes

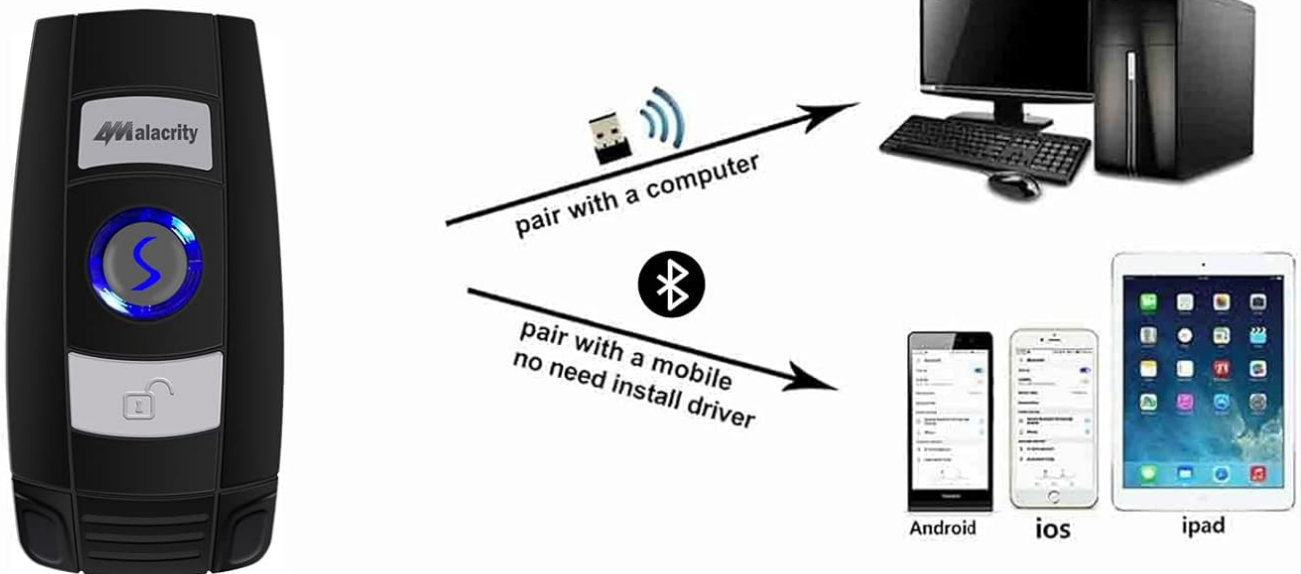


Image 3.2: Illustration of the scanner's wired connection via USB cable to a computer and wireless connections (Bluetooth to mobile, 2.4GHz to computer via dongle).

3.2.1. Bluetooth Connection

To connect via Bluetooth:

1. Ensure the scanner is powered on.
2. Activate Bluetooth on your smartphone, tablet, or computer.
3. Search for available devices and select "BarCode Scanner HID" (or similar) to pair.
4. The Bluetooth transmission distance is up to 33 feet (10 meters).

3.2.2. 2.4GHz Wireless Connection

To connect via 2.4GHz wireless:

1. Insert the 2.4GHz wireless dongle into an available USB port on your PC, POS machine, or laptop.

2. The scanner should automatically connect to the dongle. This is a plug-and-play operation, requiring no driver installation.
3. The 2.4GHz wireless transmission distance is 49-82 feet (15-25 meters) indoors and 164-492 feet (50-150 meters) in barrier-free outdoor environments.

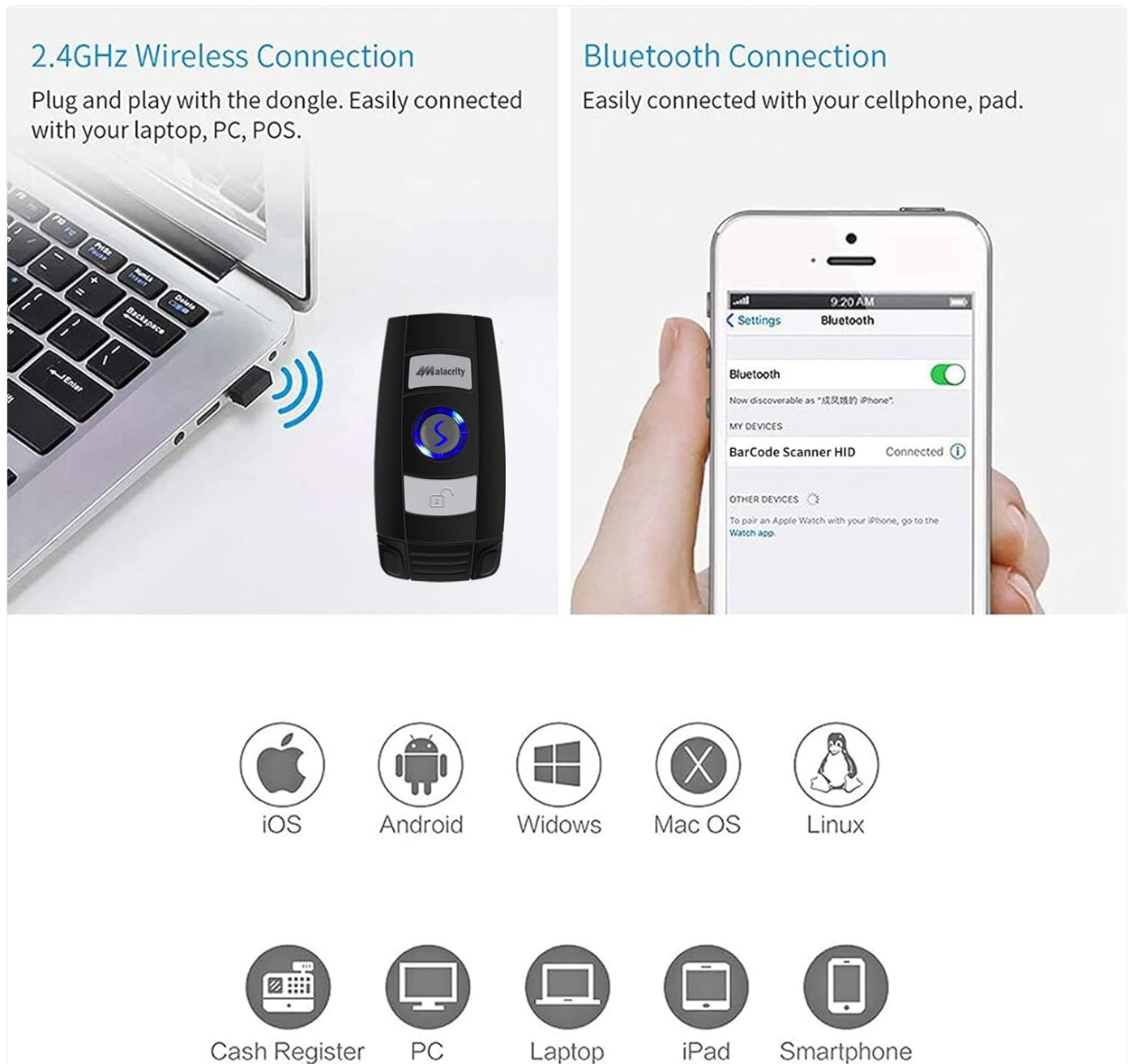


Image 3.3: Detailed view of 2.4GHz wireless connection via dongle to a laptop and Bluetooth connection to a smartphone, along with compatible operating systems (iOS, Android, Windows, Mac OS, Linux) and devices (Cash Register, PC, Laptop, iPad, Smartphone).

Long Transmission Distance



Image 3.4: Diagram illustrating the effective transmission distances for Bluetooth (15m/49ft) and 2.4GHz wireless (30m/98ft) in indoor environments, and extended ranges in barrier-free environments.

4. OPERATING MODES

4.1. Scanning Modes

The scanner supports three scanning modes:

- **Manual Trigger Mode:** Press the scan button to initiate a scan. This is the default mode.
- **Auto-Scanning Mode:** The scanner automatically detects and scans barcodes when they are presented within its field of view.
- **Continuous Scanning Mode:** The scanner continuously emits a scan beam, scanning any barcode it detects.

Refer to the user manual for specific setting codes to switch between these modes.

4.2. Data Upload Modes

The scanner offers two data upload modes:

- **Instant Upload Mode:** Barcode data is transmitted to your connected device immediately after each scan.

- **Storage Mode:** Barcode data is stored in the scanner's internal 16MB memory (capable of storing over 50,000 barcodes). Data can be uploaded to your device later by scanning a specific setting code found in the user manual.

2 Uploading Modes

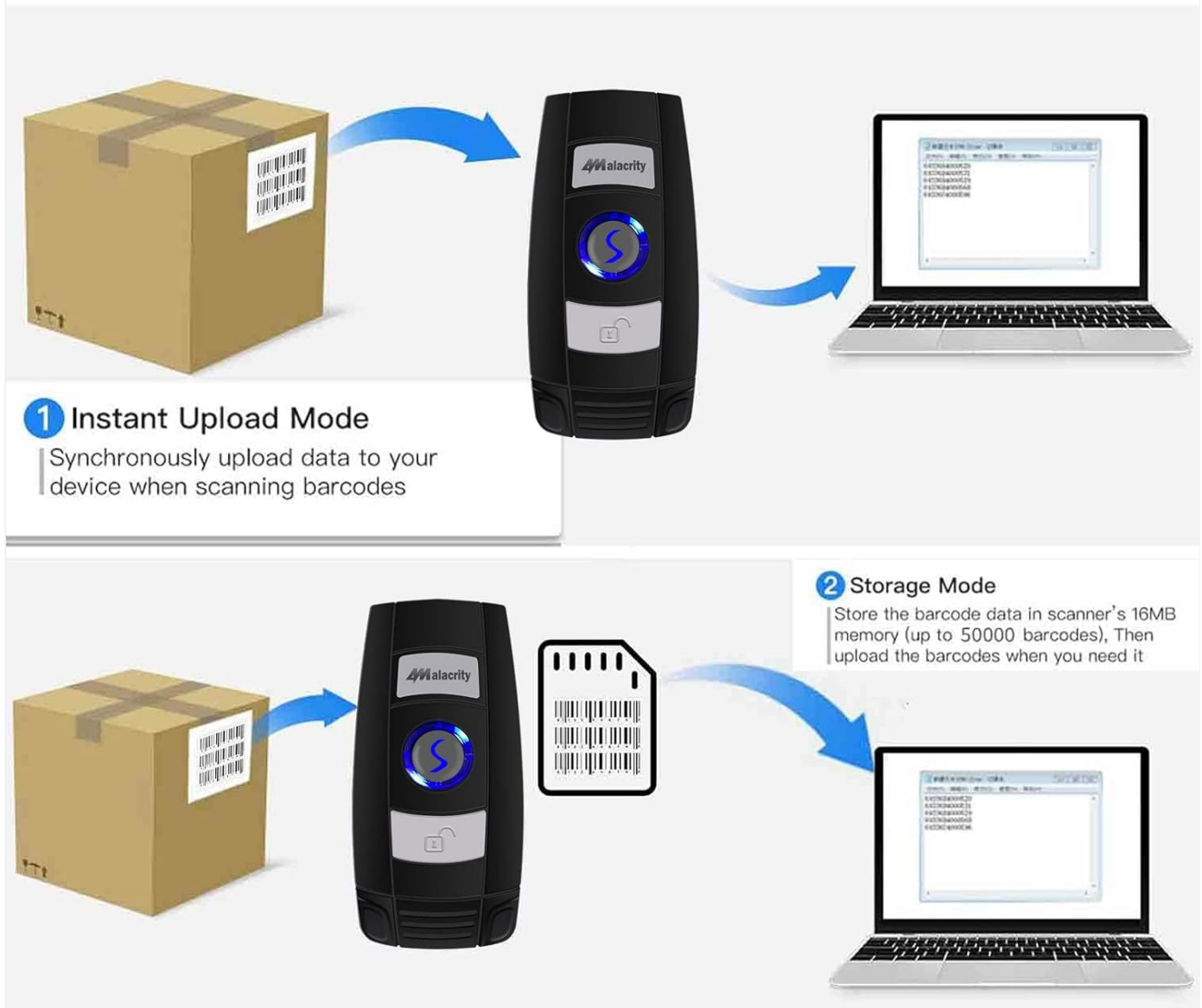


Image 4.1: Diagram showing the two data uploading modes: Instant Upload, where data is sent synchronously, and Storage Mode, where data is saved internally and uploaded later.

5. BARCODE COMPATIBILITY

The Alacrity NA-X6-CCD 1D wireless barcode scanner is capable of scanning both printed and screen barcodes. This includes barcodes displayed on mobile phones, tablets, and computer monitors.

5.1. Supported Barcode Types

The scanner supports a wide range of 1D barcode symbologies, including but not limited to:

- EAN-8, EAN-13
- Codabar
- CODE 39, CODE 93, CODE 128
- China Post

- GS1-128
- UPC-A, UPC-E
- ISBN/ISSN, ISBT
- Interleaved 2 of 5, Standard 2 of 5, Matrix 2 of 5, Industrial 2 of 5
- MSI
- RSS variants
- ITF14
- Telepen



Image 5.1: The scanner actively scanning a barcode displayed on a smartphone screen, demonstrating its capability to read digital barcodes.

6. MAINTENANCE

To ensure the longevity and optimal performance of your Alacrity NA-X6-CCD barcode scanner, follow these maintenance guidelines:

- **Cleaning:** Use a soft, dry cloth to clean the scanner's exterior. For the scanning window, use a lens cleaning cloth

and a mild cleaning solution if necessary. Avoid abrasive materials or harsh chemicals.

- **Storage:** Store the scanner in a cool, dry place away from direct sunlight, extreme temperatures, and high humidity.
- **Battery Care:** To preserve battery life, avoid fully discharging the battery frequently. If storing the scanner for an extended period, ensure it has a partial charge (around 50%) and recharge it every few months.
- **Drop Protection:** The scanner is designed to sustain drops from up to 5 feet. However, repeated drops or drops from greater heights may cause damage. Handle with care.

7. TROUBLESHOOTING

If you encounter issues with your Alacrity NA-X6-CCD barcode scanner, consider the following common troubleshooting steps:

- **Scanner Not Connecting:**
 - Ensure the scanner is charged and powered on.
 - For Bluetooth, verify Bluetooth is enabled on your device and the scanner is in pairing mode. Try re-pairing.
 - For 2.4GHz wireless, ensure the dongle is securely inserted and recognized by your computer. Try a different USB port.
 - For USB wired, ensure the cable is properly connected to both the scanner and the host device.
- **No Data Transmission After Scanning:**
 - Check if the scanner is successfully connected to your device.
 - Verify the scanner is in the correct data upload mode (Instant Upload or Storage Mode). If in Storage Mode, you need to manually upload the data.
 - Ensure the cursor is in a text field or application ready to receive input on your host device.
- **Unable to Scan Certain Barcodes:**
 - Confirm the barcode type is supported by the scanner (refer to Section 5.1).
 - Ensure the barcode is clear, undamaged, and well-lit.
 - Adjust the scanning distance and angle.
 - Some barcode types may need to be enabled via setting codes in the user manual.
- **Scanner Not Responding:**
 - Perform a soft reset by turning the scanner off and then on again.
 - If unresponsive, allow the battery to fully discharge and then recharge it.

For advanced configurations or persistent issues, please consult the detailed user manual provided with the product or contact Alacrity customer support.

8. SPECIFICATIONS

Feature	Specification
Model	NA-X6-CCD
Product Dimensions	2.56 x 2 x 1 inches (6.5 x 5.1 x 2.5 cm)

Feature	Specification
Item Weight	3.2 ounces (90.7 grams)
Battery	1 Lithium Polymer battery (650mAh, included)
Charging Time	Approx. 3.5 hours
Continuous Working Time	Approx. 24 hours
Standby Time	Approx. 30 days
Connectivity Technology	Wireless (Bluetooth, 2.4GHz), USB Cable
Compatible Devices	Smartphones, Tablets, PCs, POS machines (Windows, Mac, Android, iOS, Linux)
Storage Capacity	16MB (stores 50,000+ barcodes)
Drop Height	Up to 5 feet (1.5 meters)

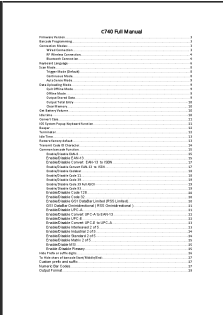

9. WARRANTY AND SUPPORT


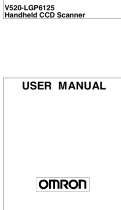


Alacrity is committed to providing quality products and customer satisfaction. For any questions, technical assistance, or support regarding your NA-X6-CCD barcode scanner, please feel free to contact the seller. We aim to respond to inquiries within 24 hours.

Additionally, a complete Software Development Kit (SDK) is available for secondary development purposes. Please contact the seller if you require access to the SDK.



Related Documents - NA-X6-CCD

	<p>Netum C740 Barcode Scanner: Full Manual and Setup Guide</p> <p>Comprehensive user manual for the Netum C740 barcode scanner, covering setup, connection modes (wired, wireless, Bluetooth), barcode programming, configuration options, and troubleshooting.</p>
	<p>Netum NT-1205BT Barcode Scanner Quick Setup Guide</p> <p>Comprehensive guide for setting up and configuring the Netum NT-1205BT 1D CCD Bluetooth and USB barcode scanner, covering connection modes, operation modes, keyboard language, scan modes, data uploading, terminators, idle time, beeper settings, factory reset, and various barcode symbology configurations.</p>

	<p>Netum NT-W3 Barcode Scanner Quick Setup Guide</p> <p>Quick setup guide for the Netum NT-W3 barcode scanner, covering configuration, scanning modes, and programming for various barcode symbologies.</p>
	<p>OMRON V520-LGP6125 Handheld CCD Scanner User Manual</p> <p>Comprehensive user manual for the OMRON V520-LGP6125 Handheld CCD Scanner, covering installation, setup, RS-232C and PLC/Touchscreen interfaces, and programming bar code menu functions.</p>
	<p>Globus: Podrobná pravidla hry – Vyhrajte poukaz na tankování a Birell Active</p> <p>Oficiální pravidla promoční hry v hypermarketu Globus Chomutov, kde můžete vyhrát poukaz na tankování nebo karton nápoje Birell Active. Zjistěte, jak se zúčastnit, jaké jsou ceny a podmínky.</p>
	<p>Bluetooth Barcode Scanner Quick Start Guide</p> <p>A quick start guide for the Bluetooth barcode scanner, covering package contents, decoder parameters, connection modes (wired and Bluetooth), pairing instructions for various operating systems, upload modes, scanning modes, profile settings, terminator settings, character settings, keyboard settings, language and voice settings, sleep time, shutdown, and factory reset.</p>