



[Manuals.plus](#) /

> [Ctronics](#) /

> Ctronics 2.5K 4MP Wi-Fi Outdoor PTZ Security Camera Instruction Manual (Model: CTIPC-380C-4MP-BP-EU)

Ctronics CTIPC-380C-4MP-BP-EU

Ctronics 2.5K 4MP Wi-Fi Outdoor PTZ Security Camera Instruction Manual

Model: CTIPC-380C-4MP-BP-EU

1. INTRODUCTION

This manual provides detailed instructions for the installation, operation, and maintenance of your Ctronics 2.5K 4MP Wi-Fi Outdoor PTZ Security Camera. Please read this manual thoroughly before using the product to ensure proper function and safety. Keep this manual for future reference.



Image: Ctronics 2.5K 4MP Wi-Fi Outdoor PTZ Security Camera, front view.

2. PACKAGE CONTENTS

Verify that all items listed below are included in your package. If any items are missing or damaged, please contact Ctronics customer support.

- Ctronics 2.5K 4MP PTZ Security Camera (2 units, if purchased as a 2-pack)
- Power Adapter (2 units, if purchased as a 2-pack)
- Ethernet Cable (2 units, if purchased as a 2-pack)
- Mounting Screws and Wall Plugs
- Instruction Manual



Image: Contents of the Ctronics security camera package, including cameras, power adapters, and mounting hardware.

3. PRODUCT FEATURES

The Ctronics 2.5K 4MP Wi-Fi Outdoor PTZ Security Camera offers advanced features for comprehensive surveillance:

- **2.5K 4MP HD Resolution:** Captures clear video at 2560x1440P, providing more detail than 1080P cameras.
- **Color Night Vision:** Equipped with 4 white lights and 4 infrared lights, enabling full-color night vision up to 30 meters.
- **Human Detection & Auto Tracking:** Intelligent humanoid detection reduces false alarms by focusing on human shapes. The camera automatically tracks detected human movement.
- **PTZ Functionality:** Supports 355° horizontal pan and 90° vertical tilt control remotely via your smartphone, covering a wide area.
- **Two-Way Audio:** Built-in microphone and speaker allow for real-time communication through the camera.
- **IP66 Weatherproof:** Designed with a durable, weather-resistant casing to withstand extreme outdoor conditions.
- **Local Storage:** Features an integrated SD card slot, supporting up to 128GB TF cards for continuous or event-triggered recording.
- **Multi-User Viewing & Remote Access:** Supports simultaneous online viewing by multiple users and remote access via iOS/Android/Mac/Windows devices using the "HiP2P" or "CTRONICS" applications.

4. SETUP GUIDE

4.1 Physical Installation

1. **Choose a Location:** Select an outdoor location with a clear view of the area you wish to monitor. Ensure the location is within range of your Wi-Fi network or has access to an Ethernet connection.
2. **Mount the Camera:** Use the provided mounting screws and wall plugs to securely attach the camera to a wall or ceiling.
3. **Connect Power:** Plug the power adapter into the camera and then into a power outlet.



Image: Ctronics camera mounted outdoors, demonstrating its IP66 weatherproof design.

4.2 App Download and Account Creation

1. **Download the App:** Search for "CTRONICS" or "HiP2P" in your mobile device's app store (iOS/Android) or download the client software for Mac/Windows from the official Ctronics website.
2. **Create an Account:** Open the app and follow the on-screen instructions to register a new account.



Image: Ctronics app interface on a smartphone, illustrating multi-user access and remote viewing capabilities.

4.3 Camera Pairing and Network Connection

1. **Add Device:** In the app, tap the "+" icon to add a new device.
2. **Bluetooth Pairing (Recommended):** The camera supports effortless Bluetooth pairing. Ensure your phone's Bluetooth is enabled. The app will automatically detect the camera within 10 meters. Follow the prompts to connect.



Image: Visual guide for Bluetooth pairing, showing automatic detection and quick setup.

3. **Wi-Fi Configuration:** Select your Wi-Fi network and enter the password. Ensure the camera is connected to a 2.4GHz Wi-Fi network.
4. **Wired Connection (Optional):** If preferred, connect the camera to your router using an Ethernet cable. The app will detect the camera automatically.
5. **Complete Setup:** Once connected, name your camera and set a password for security.

5. OPERATING INSTRUCTIONS

5.1 Live View and PTZ Control

- Open the Ctronics app and select your camera to view the live feed.
- Use the on-screen joystick or swipe gestures to control the camera's pan (355° horizontal) and tilt (90° vertical) movements.



Image: Illustration of the camera's 355-degree pan and 90-degree tilt capabilities, controlled via smartphone.

5.2 Two-Way Audio

- While in live view, tap the microphone icon to speak through the camera's speaker.
- Tap the speaker icon to listen to audio from the camera's surroundings.

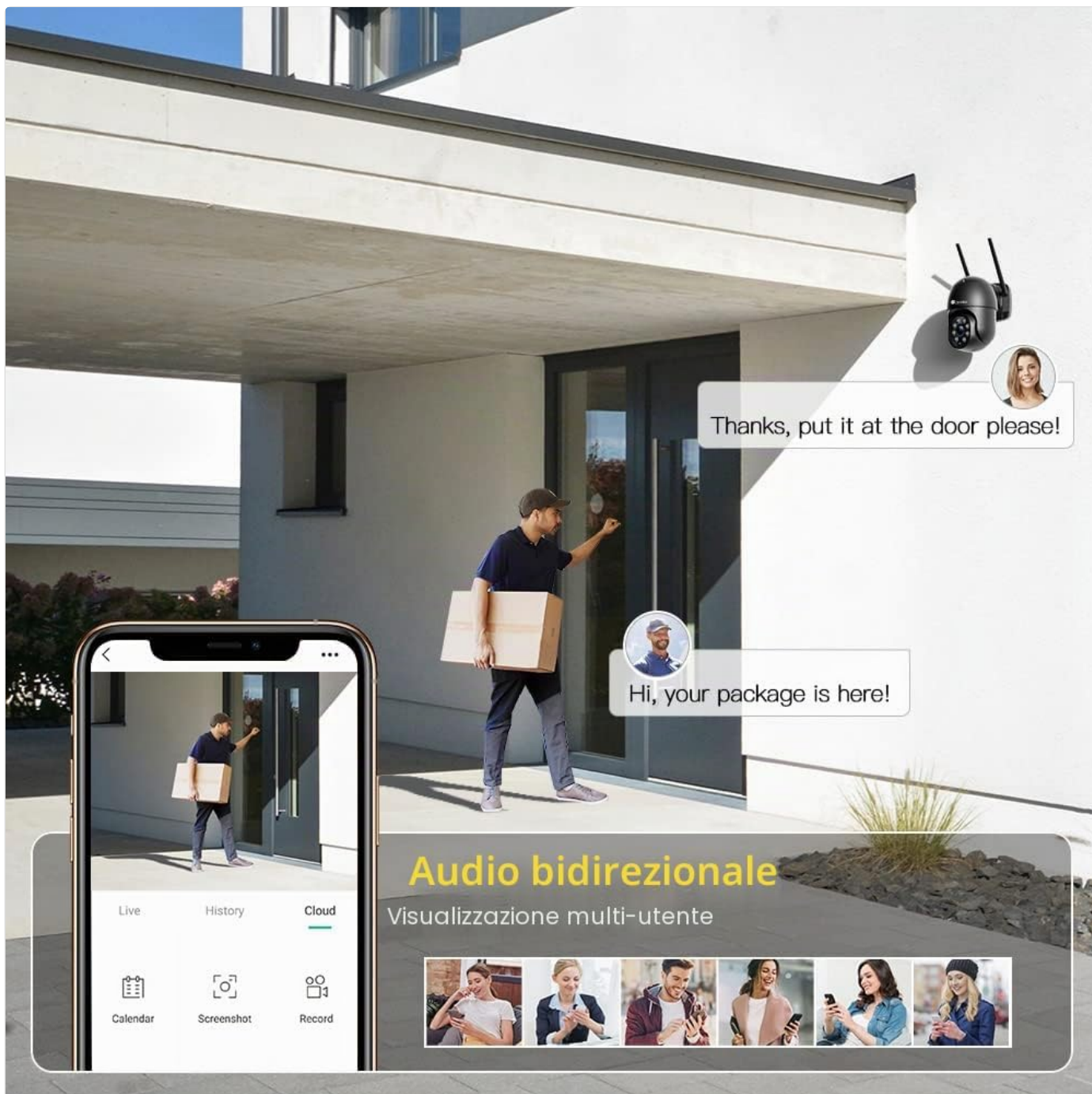
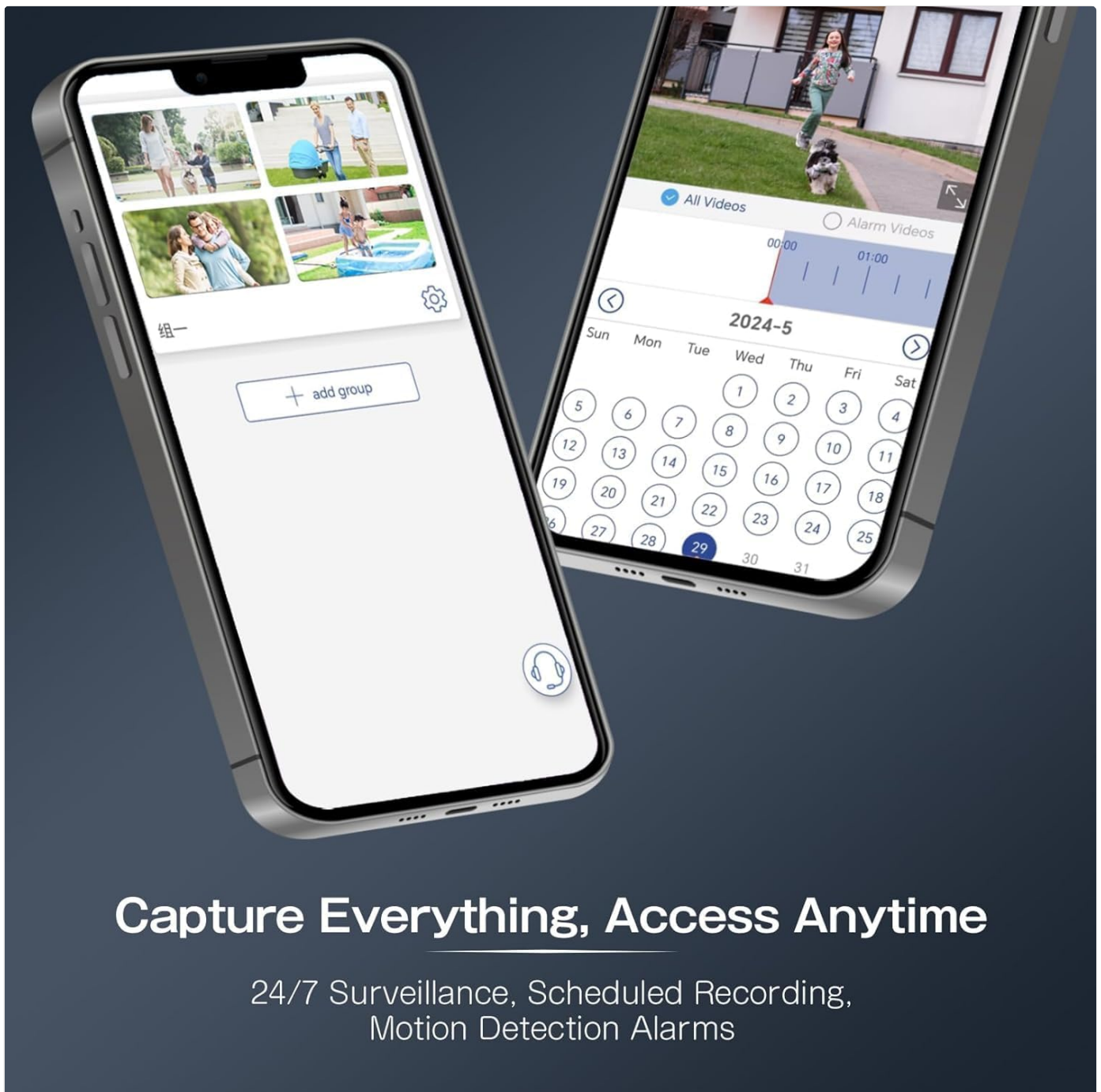


Image: Demonstrates the two-way audio feature, allowing communication with individuals near the camera.

5.3 Recording and Playback

- **Local Storage:** Insert a Micro SD card (up to 128GB) into the camera's SD card slot for continuous or event-triggered recording.
- **Cloud Storage:** Optional cloud storage services may be available through the app for secure off-site backup.
- **Playback:** Access recorded footage via the "Playback" or "History" section in the app.



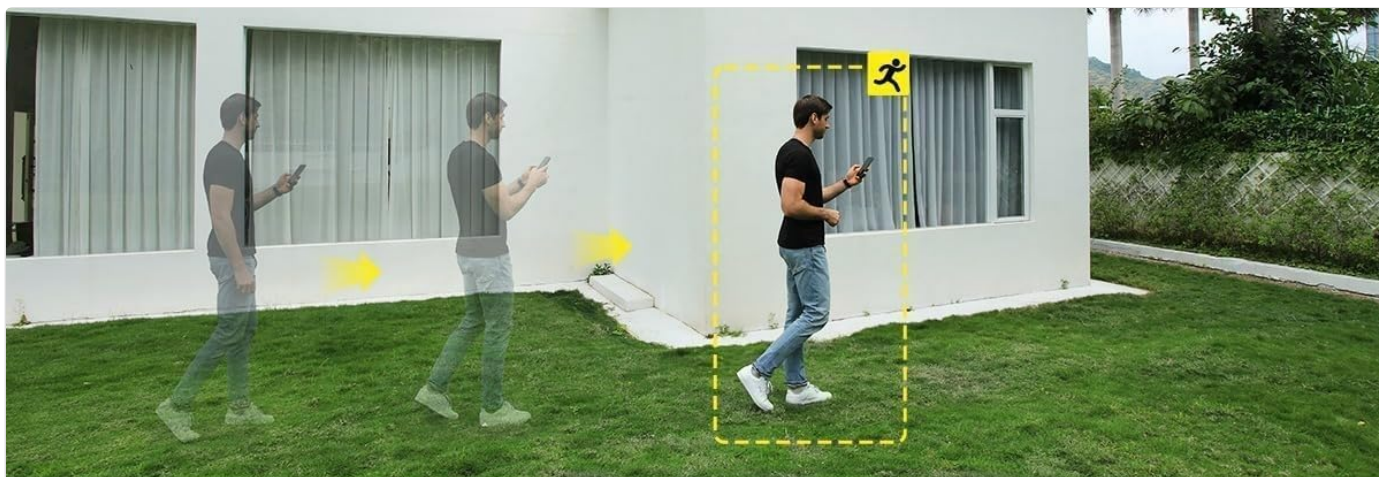
Capture Everything, Access Anytime

24/7 Surveillance, Scheduled Recording,
Motion Detection Alarms

Image: The Ctronics app displaying a timeline and calendar for accessing recorded surveillance footage.

5.4 Motion Detection and Alerts

- **Enable Detection:** Navigate to the camera settings in the app to enable Human Detection.
- **Sensitivity:** Adjust the detection sensitivity to minimize false alarms.
- **Alerts:** Configure email alerts or push notifications to your smartphone when motion is detected.
- **Auto Tracking:** When Human Detection is active, the camera will automatically track detected individuals.



Rilevamento Umano e Tracciamento Automatico

Sensibilità Regolabile e Zone di Rilevamento Personalizzabili

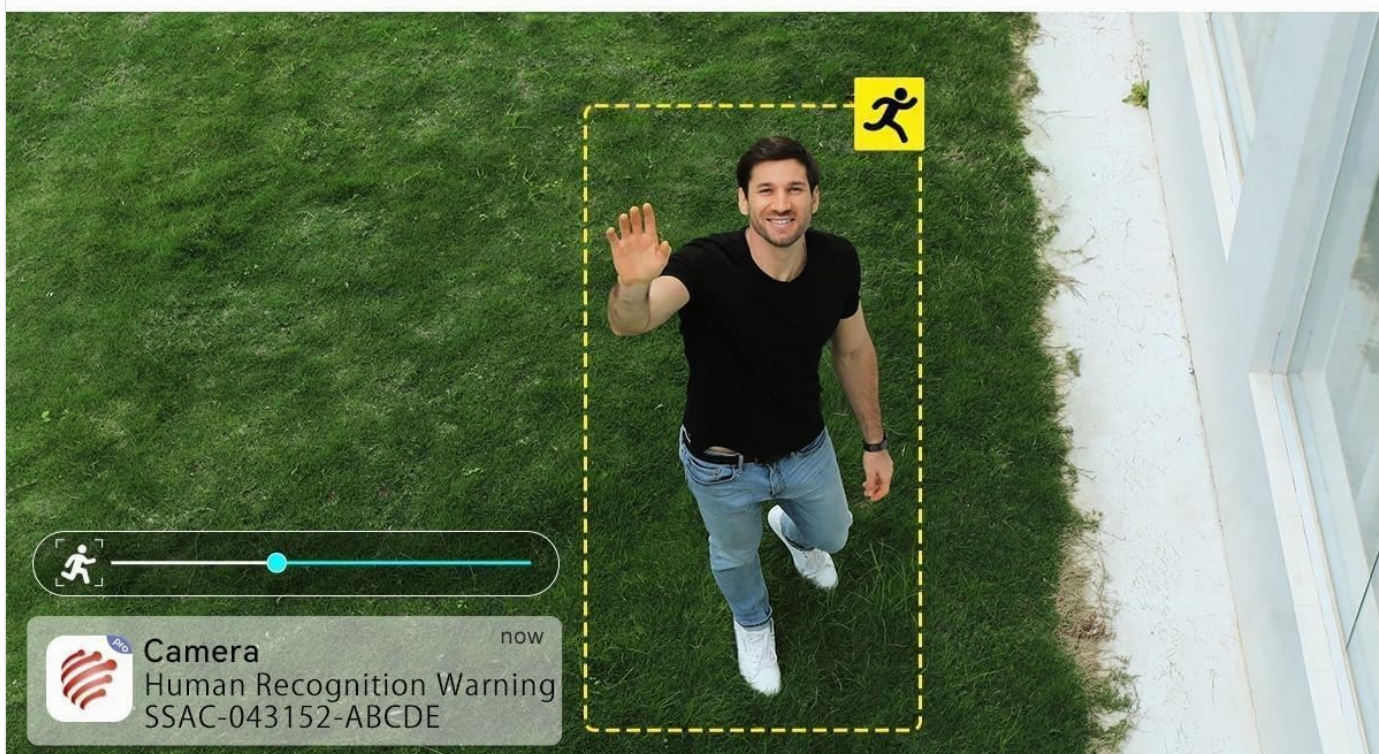


Image: Illustrates the camera's human detection and auto-tracking capabilities, highlighting a detected person.

5.5 Night Vision Modes

- The camera automatically switches to night vision in low-light conditions.
- You can choose between infrared (black and white) or full-color night vision in the app settings.

Visione notturna a colori

Distanza di visione notturna fino a 30 metri



Image: The camera's color night vision feature, providing clear visibility up to 30 meters in low light.

6. MAINTENANCE

- **Cleaning:** Regularly wipe the camera lens with a soft, damp cloth to ensure clear image quality. Do not use harsh chemicals.
- **Firmware Updates:** Check the app periodically for firmware updates. Keeping your camera's firmware updated ensures optimal performance and security.
- **Power Supply:** Ensure the power adapter and cable are free from damage.
- **SD Card Management:** If using an SD card, periodically review and back up important footage. The camera supports automatic overwriting when the card is full.

7. TROUBLESHOOTING

Problem	Possible Solution
---------	-------------------

Problem	Possible Solution
Camera offline/Cannot connect to Wi-Fi	<ul style="list-style-type: none"> • Ensure the camera is powered on. • Check Wi-Fi signal strength at the camera's location. • Verify Wi-Fi password is correct. • Restart the camera and your router. • Ensure your Wi-Fi is 2.4GHz.
Poor image quality	<ul style="list-style-type: none"> • Clean the camera lens. • Ensure sufficient lighting for optimal image. • Check network bandwidth for streaming issues.
Motion detection not working or too many false alarms	<ul style="list-style-type: none"> • Verify Human Detection is enabled in app settings. • Adjust detection sensitivity. • Ensure the camera's view is not obstructed.
SD card not recording	<ul style="list-style-type: none"> • Ensure the SD card is inserted correctly. • Format the SD card via the app. • Check if the SD card is full (though it should overwrite). • Verify the SD card is compatible (up to 128GB).

8. SPECIFICATIONS

Feature	Detail
Model Name	CTIPC-380C-4MP-BP-EU
Brand	Ctronics
Resolution	2.5K 4MP (2560x1440P)
Connectivity Technology	Wired, Wi-Fi (2.4GHz)
Special Features	Night Vision (Color), Human Detection, Auto Tracking, Two-Way Audio
Usage Environment	Outdoor (IP66 Weatherproof)
Pan/Tilt Angle	355° Pan, 90° Tilt
Night Vision Range	Up to 30 meters
Storage	Micro SD Card (up to 128GB), Cloud Storage (optional)
Compatible Devices	iOS, Android, Mac, Windows
Power Source	Corded Electric (12 Volt, 3.5 Watt)
Material	Acrylonitrile Butadiene Styrene (ABS)
Dimensions	17 x 17 x 24 cm
Number of IR LEDs	4

Feature	Detail
Effective Still Image Resolution	4 MP
Video Capture Resolution	1080p (Note: Product title states 2.5K 4MP, this might be a default recording setting or a lower resolution option)
Video Capture Format	MP4
Control Method	App

9. WARRANTY AND SUPPORT

Ctronics is committed to providing reliable products and excellent customer service. For any issues, questions, or support needs, please refer to the following:

- **Warranty Information:** Please refer to the warranty card included in your package or visit the official Ctronics website for detailed warranty terms and conditions.
- **Customer Support:** For technical assistance or troubleshooting beyond this manual, contact Ctronics customer support through their official website or the contact information provided in the app.
- **Online Resources:** Visit the Ctronics brand store on Amazon or their official website for FAQs, updated manuals, and additional product information.