

klarus XT11R

Klarus XT11R Tactical Flashlight User Manual

Model: XT11R

INTRODUCTION

The Klarus XT11R is an advanced tactical flashlight designed for reliability and performance in various environments. It features a powerful 1300-lumen output, a long beam distance, and extended battery life, making it suitable for law enforcement, outdoor activities, and everyday carry. Its intuitive dual-switch design allows for rapid mode changes and quick access to tactical functions like strobe.

PRODUCT OVERVIEW

The XT11R flashlight is engineered for durability and ease of use. Below are its key components and features.



The Klarus XT11R tactical flashlight, showcasing its robust aluminum body and dual tail switches.

One-Hand Full Range Control

Increased grip area, cross-shaped texture, anti-slip
securely held in hand, full range control even with gloves



14.6cm (5.7")

Length



2.5cm (1")

Grip Diameter



The XT11R's ergonomic design allows for comfortable one-hand full range control, even with gloves. It measures 14.6cm (5.7 inches) in length with a 2.5cm (1 inch) grip diameter.

Rapid Reaction Flashlight

Banish the darkness, your force multiplier in security work

4 Light Modes



Strobe



High



Medium



Low



The flashlight offers rapid reaction with four light modes: Strobe, High, Medium, and Low, accessible via the tail switch.

Dual-Switch Tail Cap

Simple, Intuitive Control

One-hand control in the dark without sight
quick lock onto setting, one-touch illumination



Simple, Fast, Accurate, Powerful

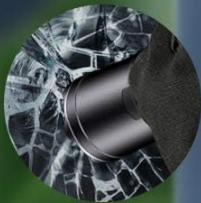
Larger control surface, speed and control from any direction

The dual-switch tail cap provides simple, intuitive control for one-hand operation in the dark, allowing quick access to settings and one-touch illumination.

Self-Defense & Crenelated Bezel

An Ace Up Your Sleeve

Compact, lightweight, easy to stow inside a pack or pocket



Window Breaker



Self-Defense



The XT11R features a crenelated bezel for self-defense and window breaking capabilities, making it a versatile tool.

SETUP

Package Contents

Upon unboxing your Klarus XT11R, please verify that all components are present:

- Klarus XT11R Tactical Flashlight
- USB-C Charging Cable
- User Manual
- Lanyard (if included)
- Spare O-ring (if included)
- Battery (if included, note: some models are sold without battery)



The XT11R package typically includes the flashlight, a USB-C cable, and the user manual.

Battery Installation

1. Unscrew the tail cap of the flashlight by turning it counter-clockwise.
2. Insert the 18650 Li-ion battery (if included, or a compatible battery) with the positive (+) end facing towards the head of the flashlight. The XT11R is designed for 18650 batteries.
3. Screw the tail cap back on clockwise until it is securely tightened. Ensure it is fully tightened to maintain water resistance and proper electrical contact.

Initial Charging

Before first use, it is recommended to fully charge the flashlight battery.

- Locate the USB-C charging port on the side of the flashlight. It is usually covered by a rubber flap for protection.
- Open the rubber flap and insert the provided USB-C cable into the port.
- Connect the other end of the USB-C cable to a compatible USB power source (e.g., wall adapter, computer USB port, power bank).
- The indicator light near the charging port will show the charging status. It typically turns red during charging and green when fully charged.
- Once charging is complete, disconnect the cable and securely close the rubber flap to protect the port from dust and water.



The XT11R features a convenient USB-C direct charging port for quick and easy recharging.

OPERATING INSTRUCTIONS

The XT11R features a dual-switch tail cap for intuitive control and quick access to various lighting modes.

Tail Switches

- **Primary Switch (Larger Button):**

- Press fully to turn the flashlight ON/OFF.
- Half-press and hold for momentary ON (releases to OFF).

- **Mode Switch (Smaller Button):**

- When the light is ON, press to cycle through lighting modes: High → Medium → Low.
- When the light is OFF, press and hold for One-Touch Strobe.
- When the light is ON, press and hold for One-Touch Strobe. Release to return to the previous mode.

Lighting Modes

- **High:** Maximum brightness (1300 lumens) for powerful illumination.
- **Medium:** Balanced brightness for general use and extended runtime.
- **Low:** Minimal brightness for close-range tasks and maximum battery life.
- **Strobe:** Disorienting flashing light for tactical situations or signaling.



The powerful beam of the XT11R provides excellent visibility for outdoor activities like camping.



The one-touch strobe function provides immediate access to a disorienting flash, useful for self-defense or signaling.

MAINTENANCE

Proper maintenance ensures the longevity and optimal performance of your Klarus XT11R flashlight.

- **Cleaning:** Regularly clean the flashlight body with a soft, damp cloth. For the lens, use a lens cleaning cloth and solution to

- avoid scratches.
- **Lubrication:** Apply a thin layer of silicone grease to the O-rings and threads periodically to maintain water resistance and smooth operation.
 - **Battery Care:**
 - Remove the battery if the flashlight will not be used for an extended period to prevent leakage.
 - Store batteries in a cool, dry place.
 - Do not over-discharge or over-charge batteries.
 - **Water Resistance:** The XT11R is IPX8 rated (submersible up to 2 meters). Ensure the tail cap is fully tightened and the USB-C port cover is sealed before exposing to water.



The XT11R is designed with IPX8 water resistance, allowing it to function reliably even in wet conditions.

TROUBLESHOOTING

If you encounter issues with your XT11R flashlight, refer to the following common problems and solutions:

Problem	Possible Cause	Solution
Flashlight does not turn on.	Battery low or depleted; Incorrect battery insertion; Loose tail cap; Dirty contacts.	Charge or replace battery; Ensure positive end faces head; Tighten tail cap; Clean battery and flashlight contacts with an alcohol swab.
Light flickers or turns off unexpectedly.	Loose tail cap; Low battery; Overheating.	Tighten tail cap; Charge battery; Reduce brightness mode to allow cooling.
Cannot cycle through modes.	Mode switch malfunction; Battery issue.	Ensure battery is fully charged; Contact customer support if issue persists.
Charging indicator not working.	Faulty cable or power source; Charging port issue.	Try a different USB-C cable and power source; Ensure port is clean and free of debris.

SPECIFICATIONS

Detailed technical specifications for the Klarus XT11R Tactical Flashlight.

Feature	Detail
Model	XT11R

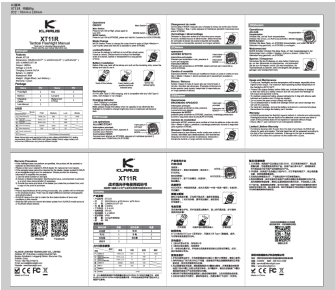
Feature	Detail
Brightness	1300 Lumens (Max)
Beam Distance	300 Meters (Max)
Runtime	144 hours (Max)
Light Source Type	LED
Power Source	Battery Powered (1 A battery required, included)
Battery Cell Composition	NiMH
Material	Aluminum 6061-T6 with Mil-Spec HAIII anti-abrasive and anodized finish
Water Resistance Level	IPX8 (2 meters submersible)
Impact Resistance	1 Meter
Dimensions	5.7 inches (length), 1 inch (diameter)
Item Weight	4.3 ounces (122 Grams)
Special Features	LED Flashlight, Dual Tail Switches, USB-C Rechargeable, Crenelated Bezel

WARRANTY AND SUPPORT

Klarus provides a warranty for its products. For specific warranty terms and conditions, please refer to the official Klarus website or the warranty card included with your product. For technical support, troubleshooting assistance beyond this manual, or warranty claims, please contact Klarus customer service through their official channels. You can find more information and contact details on the official Klarus website:www.klaruslight.com



Documents - klarus – XT11R



[\[pdf\]](#) User Manual Instructions
XT11R 6 A1zhaunqu cdr Administrator Manual Instructions and Videos KLARUS 17053887702093173 klaruslight
upload files article 20240116 |||
...
lang: score:35 filesize: 3.63 M page_count: 1 document date: 2020-09-11

[pdf]

2023 2024 04 11 cdr admin

KLARUS

1714037032505186617140370325051866171403703250518661714037032505186617140370325051866klaruslight
cn upload files article 20240425 17140370325051866klaruslight 17140370325051866

1714037064309429217140370643094292171403706430942921714037064309429217140370643094292klaruslight

17140370643094292klaruslight ||| ||| KLARUS 1 4 0 KLARUS58 XT XT11TacticalGear XT21X2019 2 4 0

20113KLARUSXT10 RS11 USB XT10 360X3 360 XT20 X6 AA X5 AAA ED10 CL2 3 4 0 2023CL2

EDCEVERYDAYCARRY EDC 2020HR1PLUS - 2019360X3 2017TitaniumH1A 2023XT1CPRO 2022CL2 1 2 1

2019XT21X 2018

KLARUS 1 4 0 KLARUS58 XT XT11TacticalGear XT21X2019 2 4 0 20113KLAR ... XT12S

XT11GTPRO JEEP C12 XT12S / XT11SXT11GTPRO / XT2CXT11UV XT11GTPROXT2CR

XT2CRPROA1PRO**XT11R** / XT11SXT1ARS80GT XT11UVMi7FX10 XT12GT

XT2CRPROXT2CR / XT1CRS10 XT11 / A1**XT11R** XT2C...

lang:i-klingon score:28 filesize: 65.46 M page_count: 48 document date: 2024-04-25

