

Gaoducash TYZG1

Gaoducash Smart Hub Gateway User Manual

MODEL: TYZG1

1. Introduction

This manual provides detailed instructions for the installation, operation, and maintenance of your Gaoducash Smart Hub Gateway (Model TYZG1). This multi-protocol communication gateway supports Wi-Fi, Zigbee, and Bluetooth Mesh, enabling seamless integration and control of various smart home devices through a single platform.

The gateway acts as a central bridge, allowing you to manage and automate your smart devices, including those compatible with Smart Life/Tuya App, Amazon Alexa, and Google Assistant. Please read this manual thoroughly before using the product to ensure proper functionality and safety.

2. Product Overview

The Gaoducash Smart Hub Gateway is a compact device designed to unify your smart home ecosystem. It supports multiple communication protocols to ensure broad compatibility with various smart devices.



Figure 2.1: Gaoducash Smart Hub Gateway, USB power cable, and a smartphone showing the Smart Life app interface for device management.

Key Features:

- **Multi-Mode Connectivity:** Supports Zigbee, Bluetooth Mesh, and Wi-Fi protocols for comprehensive device integration.
- **App Remote Control:** Manage devices from anywhere using the Smart Life/Tuya App.
- **Voice Control:** Compatible with Amazon Alexa, Google Assistant, and Siri for hands-free operation.
- **Smart Scene Creation:** Enables automation and device linkage across different protocols.
- **High Device Capacity:** Connect and control up to 128 smart devices simultaneously.

The multi-mode gateway supports Wi-Fi+Bluetooth+Zigbee multi-protocol communication. Bluetooth mesh (SIG) and Zigbee communication ensure stable control of 128 devices.



Figure 2.2: The gateway supports Zigbee, Bluetooth, and Zigbee+BLE Mesh protocols, powered via USB, and integrates with Tuya and Smart Life apps.

3. Setup Instructions

3.1. Package Contents

- Gaoducash Smart Hub Gateway (Model TYZG1)
- USB Power Cable
- User Manual (this document)

3.2. Initial Power-Up

1. Connect the provided USB power cable to the gateway's power port.
2. Plug the other end of the USB cable into a compatible 5V/1A USB power adapter (not included) or a USB port.
3. The indicator light on the gateway will illuminate, indicating it is powered on.

3.3. App Installation

1. Download the **Smart Life** or **Tuya Smart** app from your smartphone's app store (iOS App Store or Google Play Store).
2. Register for a new account or log in if you already have one.

3.4. Adding the Gateway to the App

1. Open the Smart Life/Tuya Smart app.
2. Tap the '+' icon in the top right corner to add a device.
3. The app may automatically discover the gateway. If not, select 'Gateway & Other' or search for 'Multi-mode Gateway'.
4. Follow the on-screen instructions to connect the gateway to your 2.4GHz Wi-Fi network. Ensure your phone is connected to the same 2.4GHz Wi-Fi network during setup.

5. Once connected, you can rename the gateway for easier identification.



Figure 3.1: The gateway's broad compatibility with various smart home platforms and protocols.

3.5. Adding Sub-Devices (Zigbee/Bluetooth)

After the gateway is successfully added, you can begin adding your Zigbee and Bluetooth sub-devices.

1. On the gateway's control interface within the app, tap **Add Device** or '+'.
2. Put your Zigbee or Bluetooth device into pairing mode (refer to the device's specific manual for instructions).
3. The app will search for nearby devices. Once detected, select the device and follow the prompts to add it.
4. You can assign devices to specific rooms and rename them for easy management.

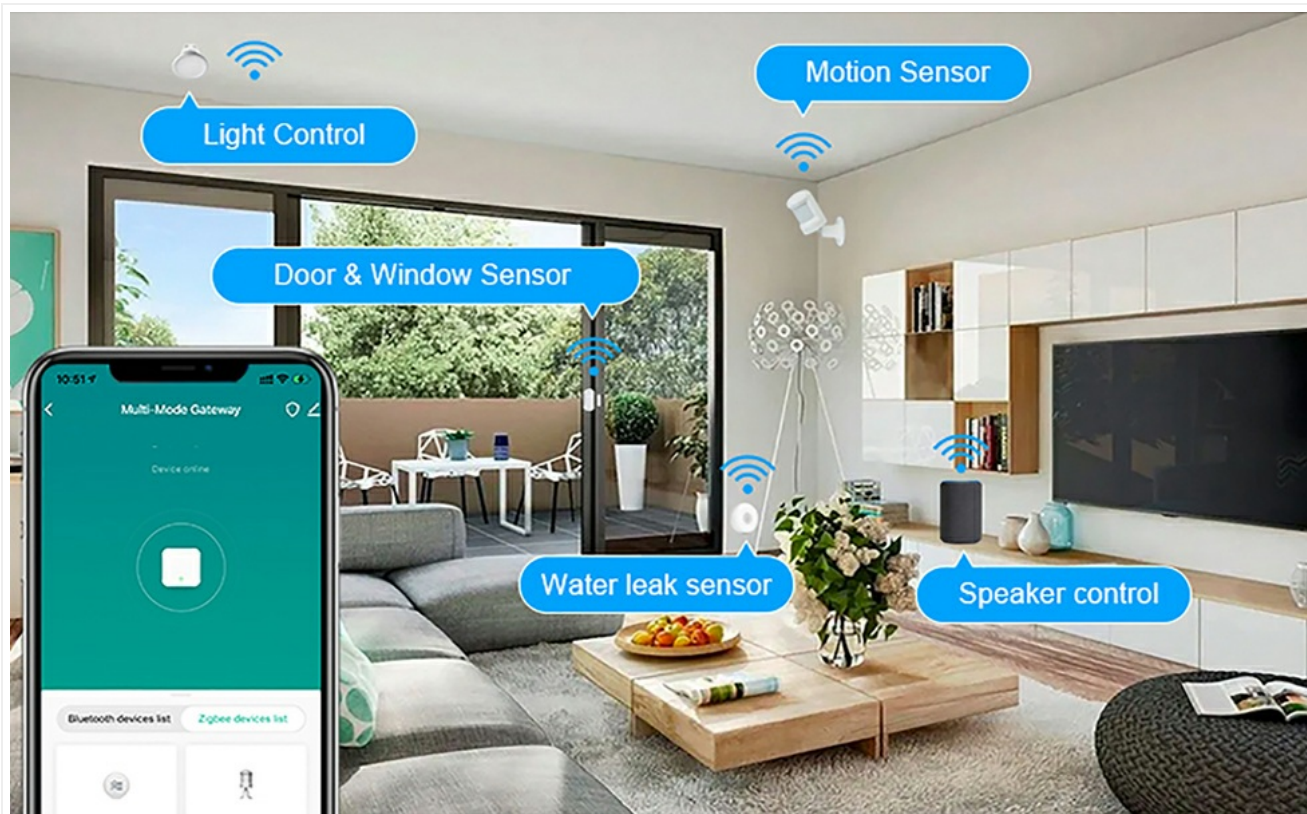


Figure 3.2: App interface for associating and adding new Bluetooth and Zigbee devices to the gateway.

Adding sub-devices without network access and multiple sub-devices accessing the network at the same time

ensure stable control of 128 devices



Figure 3.3: The gateway supports adding up to 128 sub-devices, ensuring stable control even without direct network access for some devices.

4. Operating Instructions

4.1. App Control

The Smart Life/Tuya Smart app provides a centralized platform to control all devices connected to your gateway.

- **Remote Control:** Turn devices on/off, adjust settings, and monitor status from anywhere with an internet connection.
- **Group Control:** Group multiple devices together to control them simultaneously (e.g., turn off all lights in a room).
- **Device Reset:** The app allows for resetting individual devices or the gateway itself if needed.

Control All the Device Remotely

No need to separately control your Bluetooth and ZigBee devices in two different interfaces, simply control them within one multi-mode gateway hub with reliable local linkage and group control services supported.



Figure 4.1: Remote control of various smart devices across different protocols via the gateway.

4.2. Voice Control Integration

The gateway is compatible with popular voice assistants, allowing for convenient hands-free control.

1. **Link Accounts:** In the Smart Life/Tuya Smart app, navigate to 'Me' > 'More Services' > 'Voice Control' and link your Amazon Alexa or Google Assistant account.
2. **Discover Devices:** Once linked, ask your voice assistant to discover new devices.
3. **Issue Commands:** You can now control your connected smart devices using voice commands (e.g., "Alexa, turn on the living room light," "Hey Google, close the kitchen fingerbot").

Vioce Control

Compatible with Alexa and Google Home, Use your voice to control your smart device unlock and lock as you like



Hi ! Alexa,
Please open the
front door

Figure 4.2: Example of voice control with Amazon Alexa to manage smart devices connected through the gateway.

Associate other smart devices in App for local scenario linkage and automation.

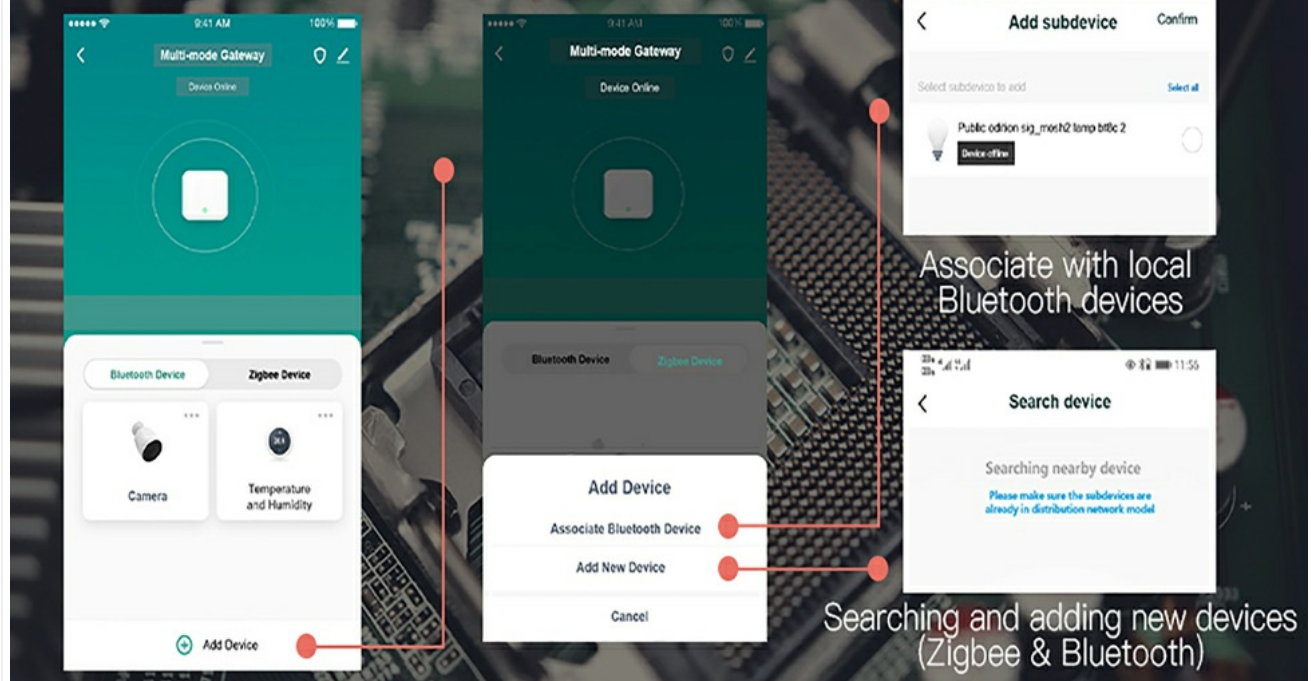


Figure 4.3: Voice control supported by Tuya Smart app, Smart Life app, Amazon Alexa, and Google Home.

4.3. Creating Smart Scenes and Automation

The gateway allows you to create custom smart scenes and automations, linking devices across different protocols for a truly integrated smart home experience.

1. In the Smart Life/Tuya Smart app, navigate to the 'Smart' or 'Automation' section.
2. Tap '+' to create a new scene or automation.
3. Define conditions (e.g., a Zigbee motion sensor detects movement, a Bluetooth temperature sensor reaches a certain temperature).
4. Define actions (e.g., turn on a Wi-Fi light, activate a Bluetooth fingerbot).
5. Save your automation. The gateway will execute these commands locally for faster response times.

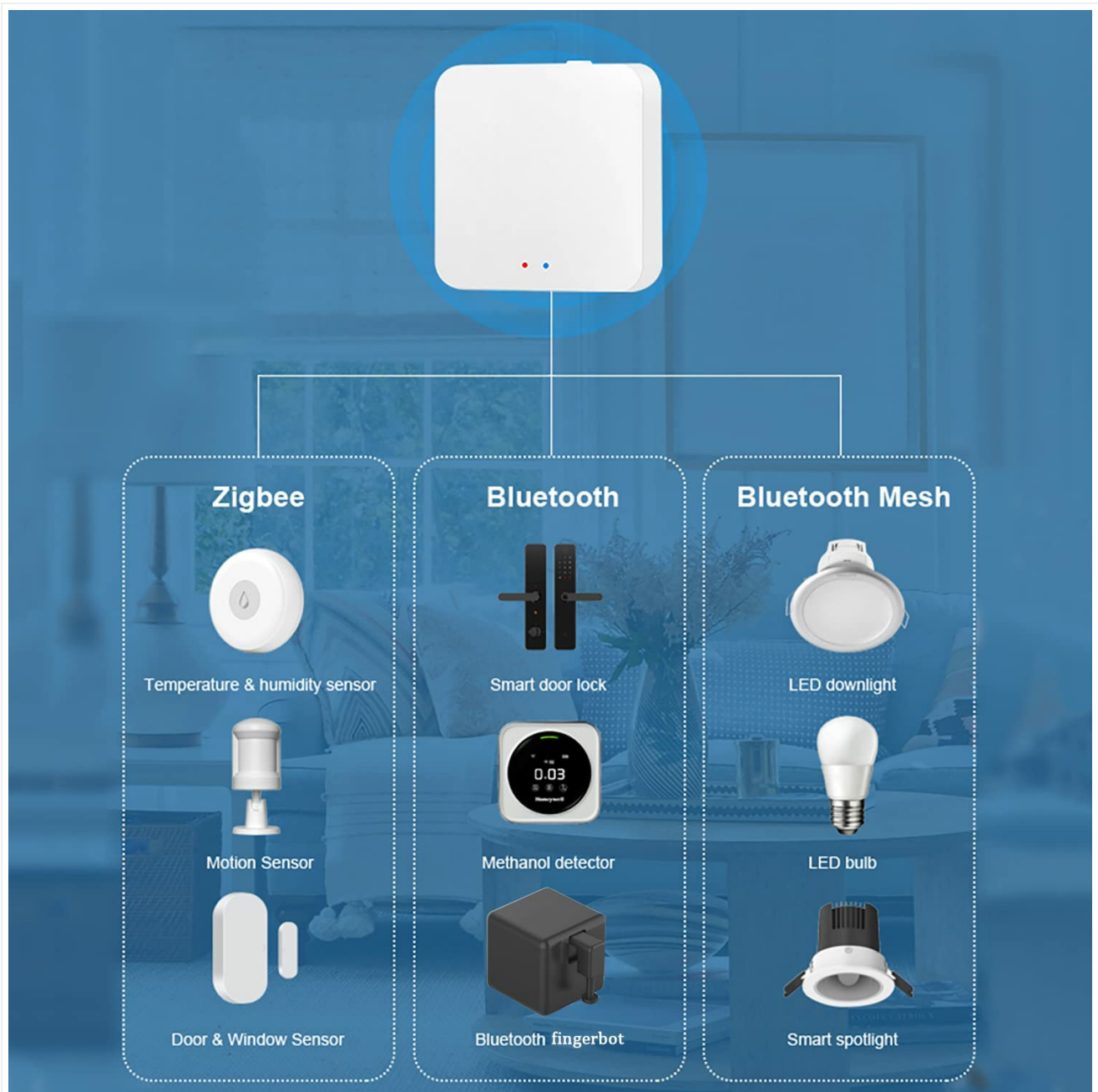


Figure 4.4: The gateway integrates devices from Zigbee, Bluetooth, and Bluetooth Mesh protocols.



Figure 4.5: Example of smart scene linkage and automation using the gateway.

Standard protocol development based on ZigBee3.0 and Bluetooth SIG standard protocol

for smart integration in Smart Life App with intelligent controls

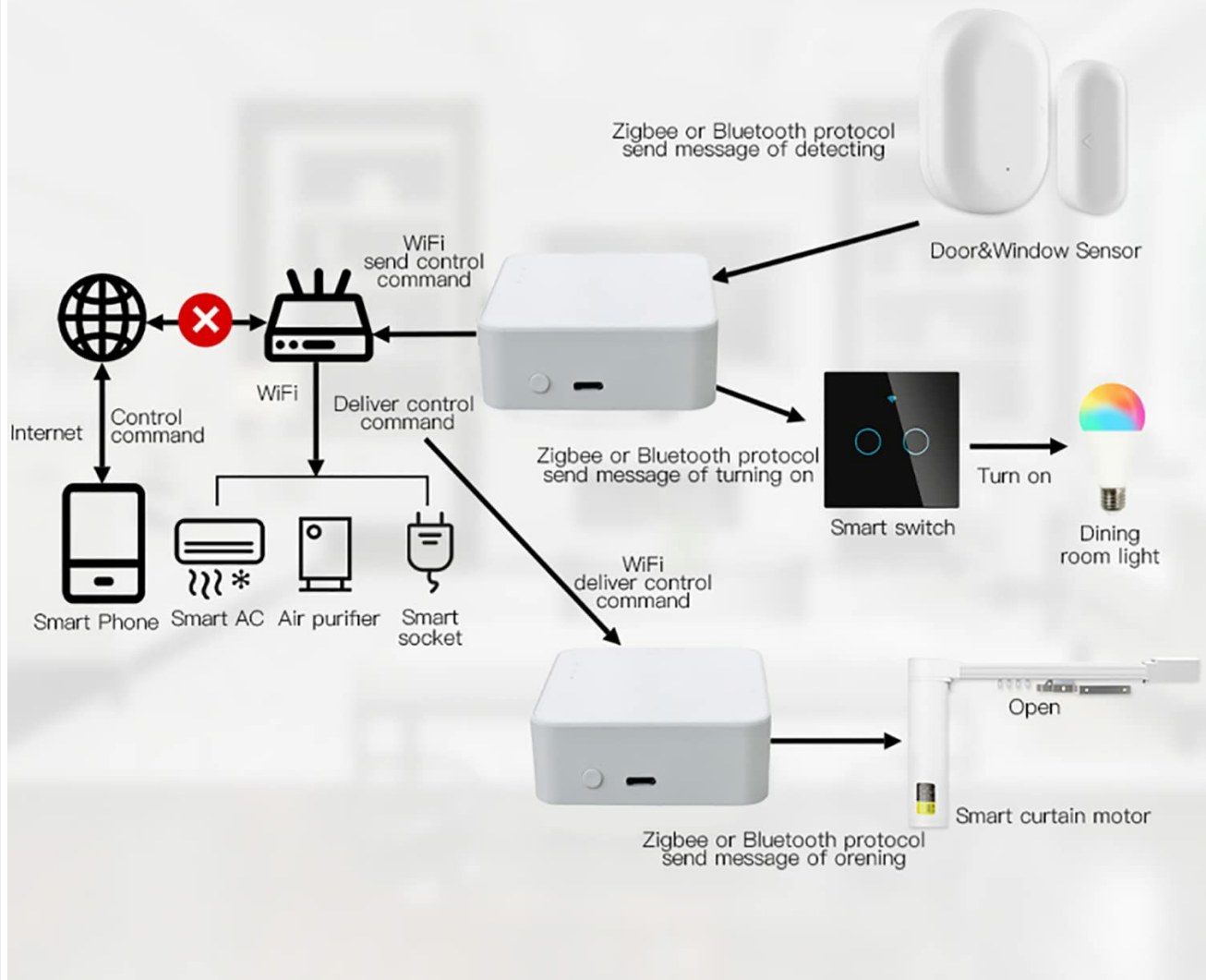


Figure 4.6: The gateway's role in delivering control commands across different protocols for smart integration.



Figure 4.7: The multi-mode gateway supports Wi-Fi, Bluetooth, and Zigbee multi-protocol communication, ensuring stable control of up to 128 devices.

5. Maintenance

5.1. Cleaning

To maintain the gateway's performance and appearance:

- Ensure the device is unplugged before cleaning.
- Wipe the exterior with a soft, dry cloth.
- Do not use liquid cleaners or abrasive materials, as these can damage the device.

5.2. Firmware Updates

Periodically check for firmware updates through the Smart Life/Tuya Smart app. Updates can improve performance, add new features, and enhance security.

1. Open the Smart Life/Tuya Smart app.
2. Select your gateway from the device list.
3. Look for 'Firmware Update' or 'Check for Updates' in the device settings.
4. Follow the on-screen instructions to install any available updates. Ensure the gateway remains powered during the update process.

6. Troubleshooting

If you encounter issues with your Gaoducash Smart Hub Gateway, refer to the following common problems and solutions:

Problem	Possible Cause	Solution
---------	----------------	----------

Problem	Possible Cause	Solution
Gateway cannot connect to Wi-Fi.	Incorrect Wi-Fi password; 5GHz Wi-Fi network; weak signal.	Ensure correct 2.4GHz Wi-Fi password. Confirm your router is broadcasting a 2.4GHz network. Move the gateway closer to the router.
Cannot add Zigbee/Bluetooth sub-devices.	Device not in pairing mode; out of range; incompatible device.	Ensure the sub-device is in pairing mode. Move the device closer to the gateway. Verify the device is Zigbee or Bluetooth compatible (Wi-Fi-only devices cannot connect to this gateway).
Sub-devices frequently disconnect or automations are unreliable.	Weak signal between gateway and sub-device; network interference; outdated firmware.	Relocate the gateway or sub-device to improve signal strength. Check for and install any available firmware updates for the gateway and sub-devices.
Voice control not working.	Voice assistant account not linked; devices not discovered.	Ensure your Smart Life/Tuya Smart account is correctly linked to Alexa/Google Home. Ask your voice assistant to discover devices again.
Gateway is unresponsive.	Power issue; software glitch.	Unplug the gateway, wait 10 seconds, then plug it back in. If the issue persists, perform a factory reset (refer to app for specific reset instructions).

7. Specifications

Feature	Specification
Model Number	TYZG1
Product Dimensions	2.52 x 2.52 x 0.6 inches
Item Weight	3.84 ounces
Operating Voltage	5 Volts
Current Rating	1 Amps
Connectivity	Wi-Fi (2.4GHz), Zigbee 3.0, Bluetooth Mesh (BLE)
Max Connected Devices	128
App Compatibility	Smart Life, Tuya Smart
Voice Assistant Compatibility	Amazon Alexa, Google Assistant, Siri
Manufacturer	Gaoducash

8. Warranty and Support

8.1. Warranty Information

The Gaoducash Smart Hub Gateway (Model TYZG1) includes a **24-month warranty** from the date of purchase. This warranty covers manufacturing defects and ensures the product functions as described under normal use. Please retain your proof of purchase for warranty claims.

The warranty does not cover damage caused by misuse, accidents, unauthorized modifications, or improper installation.



8.2. Customer Support

For technical assistance, troubleshooting, or warranty inquiries, please contact Gaoducash customer support through the following channels:

- **Email:** Refer to the contact information provided on the product packaging or the official Gaoducash website.
- **Online Support:** Visit the Gaoducash official website for FAQs, support articles, and contact forms.

When contacting support, please provide your product model number (TYZG1) and a detailed description of the issue.

Related Documents - TYZG1

	<p>Zigbee Gateway User Manual</p> <p>User manual for the Zigbee Gateway, detailing setup, connection, and troubleshooting. Compatible with Alexa and Google Assistant.</p>
	<p>TuYa Smart Home Lighting and Devices Catalog by Shenzhen New Brightness Technology</p> <p>Explore the comprehensive range of TuYa smart home lighting solutions and devices from Shenzhen New Brightness Technology. Featuring Wi-Fi, Bluetooth, and Zigbee connectivity, compatible with Alexa, Google Assistant, and HomeKit. Includes smart bulbs, LED strips, ceiling lights, smart sockets, and gateways.</p>