

Manuals+

[Q & A](#) | [Deep Search](#) | [Upload](#)

manuals.plus /

- › [xiwxi](#) /
- › [xiwxi Wireless Earbuds Instruction Manual](#)

xiwxi N09-001

xiwxi Wireless Earbuds

INSTRUCTION MANUAL - MODEL N09-001

Product Overview

The xiwxi Wireless Earbuds offer an immersive audio experience with Hi-Fi stereo sound and deep bass, powered by Bluetooth 5.3 technology. Designed for comfort and durability, these earbuds are IPX8 waterproof, making them suitable for various activities including workouts. Enjoy clear calls with Environmental Noise Cancelling (ENC) and convenient smart touch controls.



Image: xiwx Wireless Earbuds and Charging Case. The earbuds are black with a sleek design, and the compact charging case is also black, showing three indicator lights.

What's in the Box

- xiwx Wireless Earbuds (L/R)
- Charging Case
- USB-C Charging Cable
- 3 Pairs of Silicone Earcaps (S, M, L - M size pre-installed)
- User Manual



Image: All items included in the xixi Earbuds package, neatly arranged: the charging case, two earbuds, a USB-C cable, multiple sizes of ear tips, and the user manual.

Setup

Charging the Earbuds and Case

Before first use, fully charge the earbuds and charging case. Connect the provided USB-C cable to the charging port on the case and a power source. The indicator lights on the case will show the charging status.

Charging Case Indicator:

- 1 Light: 0-25% Battery
- 2 Lights: 25-50% Battery
- 3 Lights: 50-75% Battery
- 4 Lights: 75-100% Battery

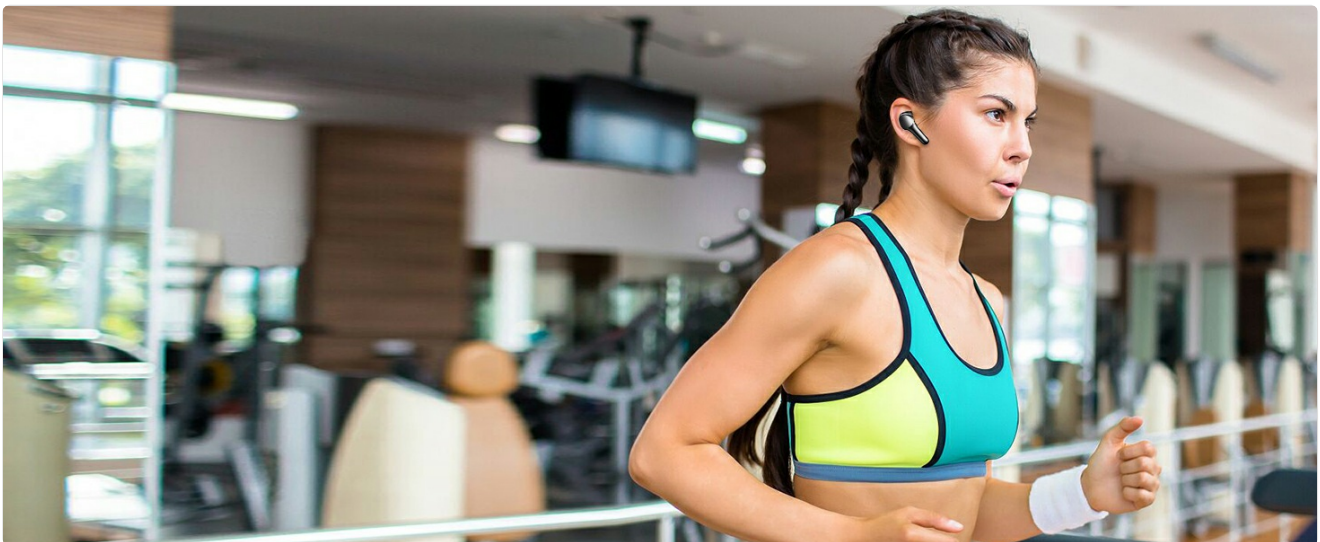


Image: The black charging case with four white LED indicator lights showing battery level. A USB-C cable is shown plugging into the case.

Bluetooth Pairing (One-Step)

1. Ensure your device's Bluetooth is turned on.

2. Open the charging case and take out both earbuds. They will automatically enter pairing mode.
3. On your device, search for "N09" in the Bluetooth settings and select it to connect.
4. Once connected, a voice prompt will confirm "Connected".

The earbuds will automatically reconnect to the last paired device when taken out of the case.

One Step Auto Pairing

As soon as you take your earbuds out of the case, they are paired to your Apple&Android devices instantly. Enjoy incredible sound seamlessly.

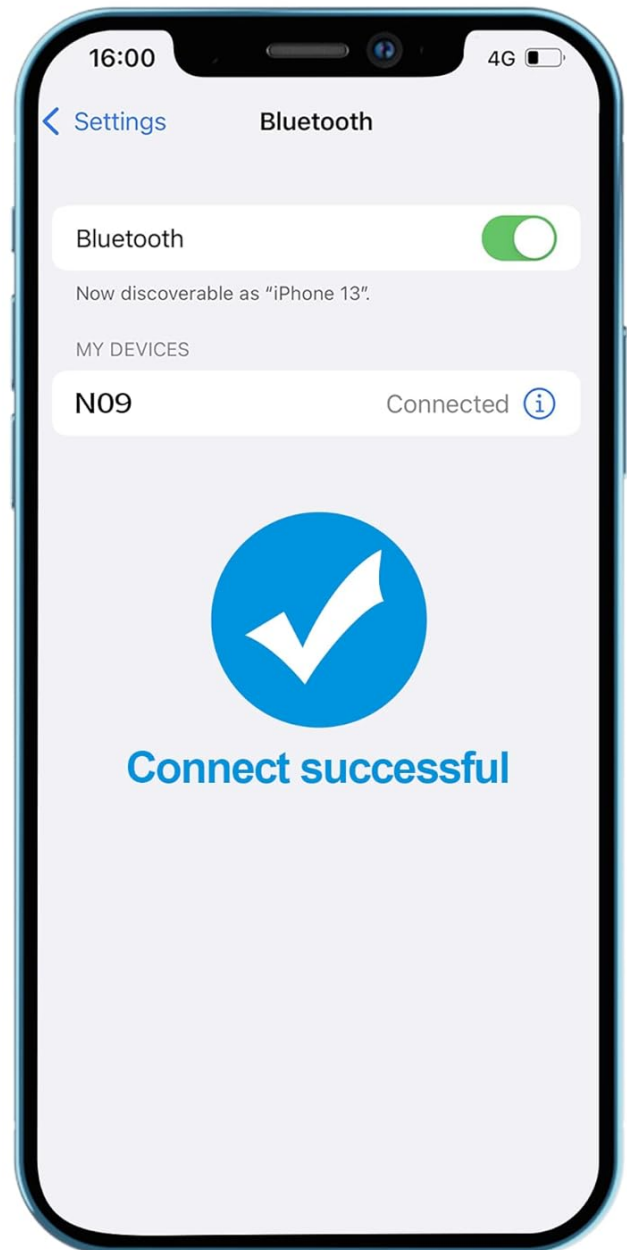


Image: A smartphone screen displaying Bluetooth settings, showing the "N09" earbuds as connected, with a checkmark indicating successful pairing. The earbuds and case are shown next to the phone.

Operating Instructions

Smart Touch Controls

The earbuds feature intuitive touch controls for easy management of music and calls.

Action	Left Earbud (L)	Right Earbud (R)
Play/Pause	Hold 2s (L/R)	
Previous Song	Tap x2	N/A
Next Song	N/A	Tap x2
Volume Up	N/A	Tap x1
Volume Down	Tap x1	N/A
Answer Call	Tap x1 (L/R)	
Hang Up Call	Hold 2s (L/R)	
Activate Voice Assistant (Siri)	Tap x3 (L/R)	



Image: A visual guide illustrating the various touch controls on the earbuds for music playback, volume adjustment, call management, and voice assistant activation.

Maintenance

Cleaning

Regularly clean your earbuds and charging case to ensure optimal performance and hygiene. Use a soft, dry, lint-free cloth. For ear tips, remove them and clean with mild soap and water, then dry thoroughly before reattaching.

Water Resistance

The earbuds are IPX8 rated, offering protection against sweat, water splashes, and rain. They are suitable for workouts and outdoor activities. **Note: The charging case is NOT waterproof.** Avoid exposing the charging case to water or moisture.

Water Resistant with IPX8 Rating

Reinforced design for sweat & water resistance during tough workouts or running (The charging case is not waterproof)



Image: Two black earbuds with water splashing around them, illustrating their IPX8 water-resistant rating. The text emphasizes reinforced design for sweat and water resistance.

Troubleshooting

Earbuds Not Pairing/Connecting

- Ensure both earbuds are charged.
- Make sure Bluetooth is enabled on your device.
- Try turning your device's Bluetooth off and on again.
- Move the earbuds closer to your device.

How to Reset the Earbuds

1. Delete the connection history for "N09" from your device's Bluetooth settings.
2. Place both earbuds back into the charging case.
3. Press the touch button on both earbuds 5 times quickly and simultaneously.
4. The earbuds will clear their memory and turn off after the red & blue lights are on for 2 seconds.

5. Then, you can reconnect with your device normally following the pairing instructions.

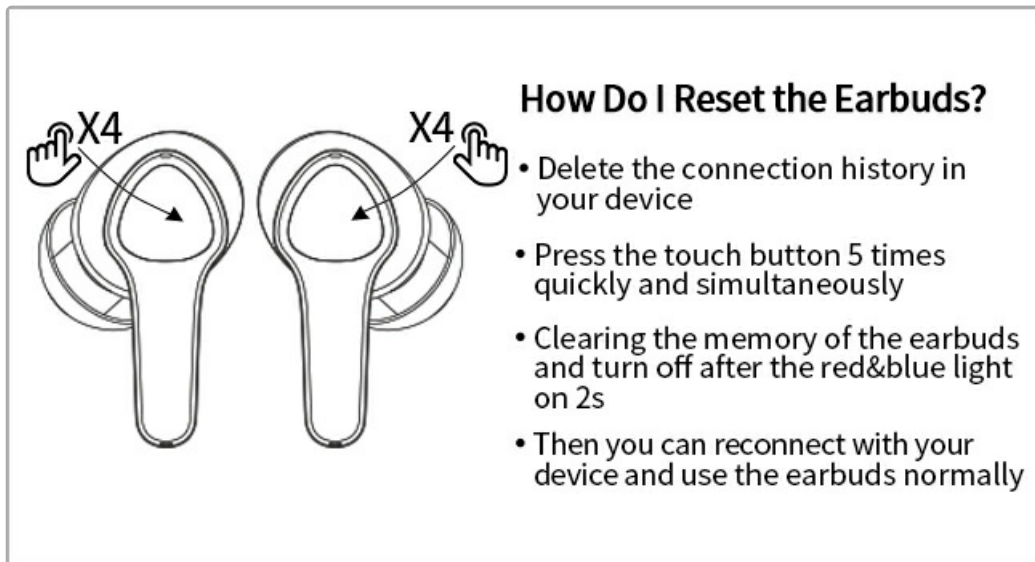


Image: A diagram illustrating the steps to reset the earbuds by tapping the touch sensor five times simultaneously on both earbuds.

Specifications

Feature	Detail
Model Name	N09
Bluetooth Version	5.3
Wireless Communication Technology	Bluetooth
Water Resistance Level	IPX8 (Earbuds only)
Battery Life (Earbuds)	Up to 6 hours (single charge)
Total Battery Life (with Charging Case)	Up to 30 hours
Charging Time	Approx. 1.5 hours
Headphones Jack	USB C
Noise Control	Environmental Noise Cancelling (ENC)
Control Type	Smart Touch Control
Material	Silicone
Item Weight (Earbud)	4.8g (approx.)

Official Product Videos

N09 Wireless Earbuds Bluetooth

Video: An official product video showcasing the N09 wireless earbuds, highlighting features like fast connection, smart touch controls, IPX8 water resistance, Hi-Fi stereo sound, call noise reduction, stable and comfortable fit, and long battery life.

Warranty and Support

For warranty information and further support, please refer to the official xiwxi website or contact customer service through your point of purchase. A detailed User Guide is also available for download:

[Download User Guide \(PDF\)](#)