

[Manuals.plus](#) /

> [WAONIQ](#) /

> WAONIQ Meridian Brush User Manual

WAONIQ AB-S15

WAONIQ Meridian Brush User Manual

Model: AB-S15

INTRODUCTION

Thank you for choosing the WAONIQ Meridian Brush. This electric heating back massager is designed to provide a comprehensive massage experience, incorporating micro-current, heating, far-infrared, and vibration functions to promote circulation and relieve discomfort. Please read this manual thoroughly before use to ensure safe and effective operation.



Image: The WAONIQ Meridian Brush, a black handheld device with a brush head and an attached power adapter, shown alongside a person measuring their waist.

SAFETY INFORMATION

To ensure safe operation and prevent injury or damage, please observe the following precautions:

- Do not use the device near water or in excessively humid environments.
- Keep the device away from high temperatures and direct sunlight.
- Do not use if the power cord or plug is damaged.
- Unplug the device when not in use or before cleaning.
- Consult a physician before use if you have pre-existing medical conditions, are pregnant, or have a pacemaker.
- Avoid using the device on sensitive areas, open wounds, or inflamed skin.
- Do not apply excessive pressure during use, especially with micro-current function.
- Keep out of reach of children.
- For micro-current function, it is recommended to apply a conductive gel or lotion to the skin to ensure smooth gliding and prevent discomfort.
- Always keep the device moving when using the micro-current function to avoid concentrated sensation.

PRODUCT FEATURES

The WAONIQ Meridian Brush combines multiple therapeutic functions:

- **Gua Sha Therapy with Micro-current Heating:** Promotes blood circulation and meridian clearing, effective for relieving joint and muscle pain, reducing fatigue, and supporting metabolism.
- **Five Physiotherapy Methods:** Features brushing, five-level micro-electric settings, five-level temperature settings, far-infrared penetration, and two-level vibration massage.
- **Four Major Advantages:** Vibration massage, micro-electric dredging, thermal energy dredging, and deep penetration for effective blood circulation and immunity improvement.
- **Versatile Application:** Suitable for home use to relax the body and relieve fatigue, as well as for professional use in beauty salons.
- **Safe and Reliable:** Designed for application to all parts of the human body, easy to operate for both professional and personal use.



Meridian Dredging, Massage to Relieve Fatigue

Image: The Meridian Brush being used on a person's back, illustrating its application for meridian dredging and fatigue relief.



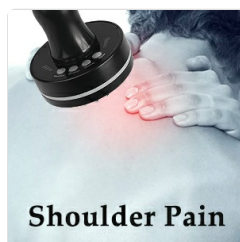
Back Pain

Relieves Back Pain



Knee Pain

Relieves Knee Pain



Shoulder Pain

Relieves Shoulder Pain

SETUP

1. Unpacking

1. Carefully remove the Meridian Brush and all accessories from the packaging.
2. Check for any signs of damage. If damaged, do not use and contact customer support.
3. Retain the packaging for future storage or transport.

2. Power Connection

1. Connect the power adapter cable to the input port on the Meridian Brush handle.
2. Plug the power adapter into a standard electrical outlet.
3. Ensure the connection is secure before operating the device.

OPERATING INSTRUCTIONS

Control Panel Overview



Image: Close-up of the Meridian Brush control panel, showing buttons for Vibration, Massage (Micro-current), Heating, and Power, along with indicators for Micro-current and Temperature levels.

- **Power Button:** Press to turn the device ON/OFF.
- **Vibration Button:** Toggles vibration mode (two levels: high and low).
- **Massage Button (Micro-current):** Activates micro-current function. Press repeatedly to cycle through 5 intensity levels.
- **Heating Button:** Activates heating function. Press repeatedly to cycle through 5 temperature levels.
- **Infrared Switch:** (Integrated with Heating or a separate button) Activates far-infrared light.
- **Micro-current Indicator:** Displays the current micro-current intensity level.
- **Temperature Indicator:** Displays the current heating temperature level.

Usage Guidelines

1. **Preparation:** Ensure your skin is clean. For micro-current function, apply a thin layer of conductive gel, lotion, or essential oil to the area you wish to treat. This helps the device glide smoothly and enhances conductivity.
2. **Power On:** Press the Power button to turn on the device.
3. **Select Function:**
 - Press the **Vibration** button to activate vibration. Press again to switch between high and low levels.
 - Press the **Massage** button to activate micro-current. Press repeatedly to adjust intensity from level 1 to 5. Start with a lower level and increase gradually.
 - Press the **Heating** button to activate heat. Press repeatedly to adjust temperature from level 1 to 5. The far-infrared light will also activate.
4. **Application:** Gently glide the brush head over the desired area of the body. For micro-current, always keep the device moving to avoid concentrated sensations.
5. **Duration:** Use for 10-20 minutes per session, or as recommended by a professional.
6. **Power Off:** After use, press the Power button to turn off the device and unplug it from the power outlet.

**8 Ferninfrarotlampen dringen in die
Kortikalis ein und dringen tief in das subkutane Fett ein
30 Bürstenköpfe aus Edelstahl glatt, ohne die Haut zu verletzen,
beständig gegen Korrosion durch ätherische Öle**

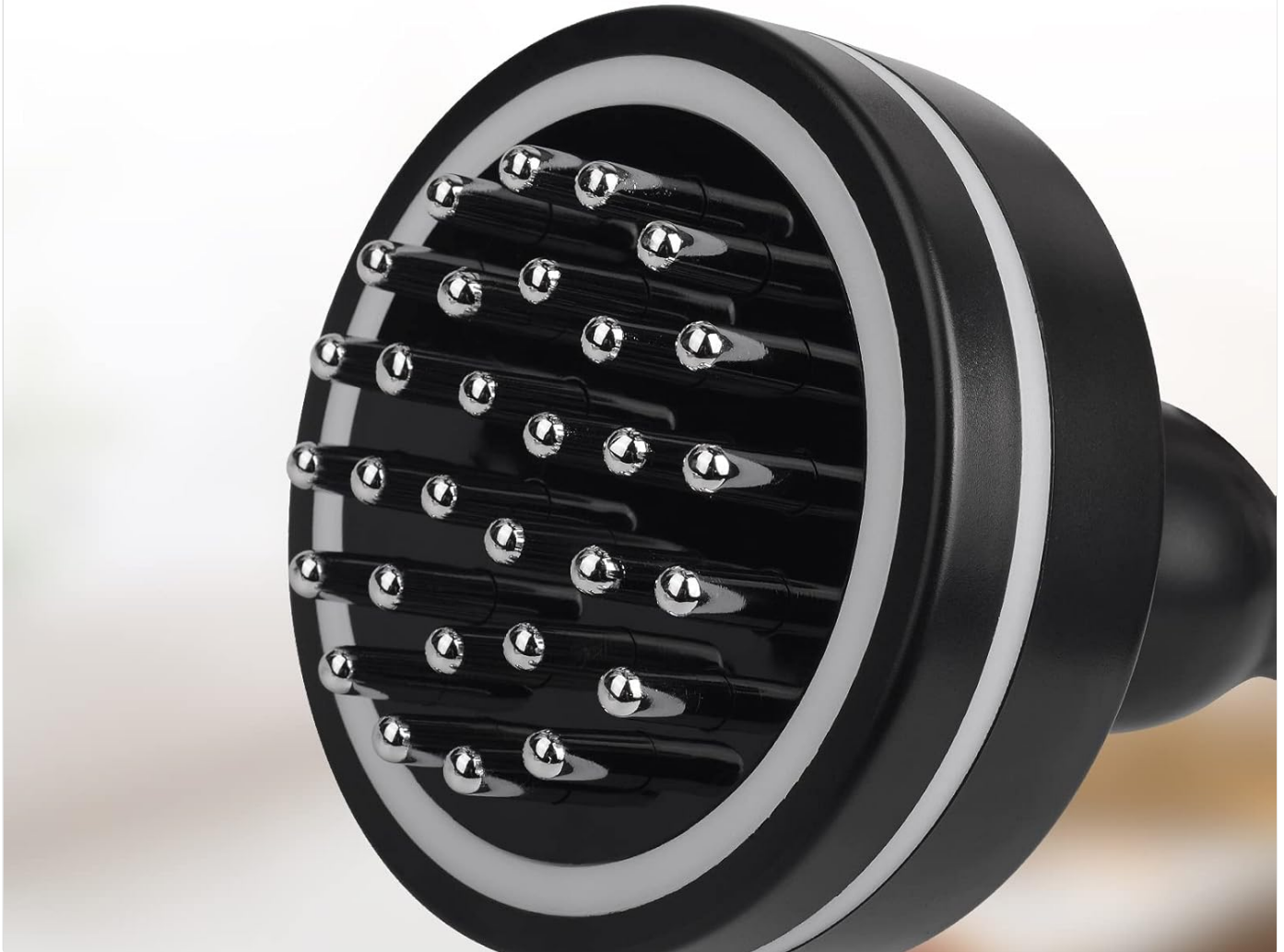


Image: Examples of the Meridian Brush in use, including on the abdomen, thigh, and showing the red light function.

MAINTENANCE

Cleaning

1. Always unplug the device before cleaning.
2. Wipe the brush head and body of the device with a soft, damp cloth.
3. Do not use abrasive cleaners, alcohol, or harsh chemicals, as these may damage the surface.
4. Ensure the device is completely dry before storing or next use.

Storage

- Store the device in a cool, dry place, away from direct sunlight and moisture.
- Keep it out of reach of children and pets.
- If possible, store in its original packaging to protect it from dust and damage.

TROUBLESHOOTING

If you encounter any issues with your Meridian Brush, please refer to the following table:

Problem	Possible Cause	Solution
Device does not turn on.	Not plugged in correctly; Power outlet issue; Damaged power cord.	Ensure power adapter is securely plugged into both the device and the wall outlet. Try a different outlet. Inspect power cord for damage.
No heat or weak heat.	Heating function not activated; Low temperature setting.	Press the Heating button to activate. Press repeatedly to increase the temperature level. Allow a few minutes for the device to warm up.
Micro-current sensation is too strong or uncomfortable.	High intensity setting; Insufficient conductive medium; Device not moving.	Reduce the micro-current intensity level. Apply more conductive gel/lotion to the skin. Ensure the device is continuously moving across the skin.
Vibration is weak or absent.	Vibration function not activated; Low vibration setting.	Press the Vibration button to activate. Press again to switch to the higher vibration level.

If the problem persists after trying these solutions, please contact WAONIQ customer support.

SPECIFICATIONS

Feature	Detail
Model Number	AB-S15
Product Dimensions	9.45 x 3.94 x 7.09 inches (approx. 24 x 10 x 18 cm)
Weight	1.32 Pounds (approx. 0.6 kg)
Manufacturer	WAONIQ
Power Input	220V (Input), 9V 2A (Output)
Power Consumption	18W
Brush Head Material	Stainless Steel
Handle Material	Rubber
Special Features	Heat, Micro-current, Vibration, Far-infrared

Leistung: 18W

Spannung: Eingang 220V Ausgang 9V 2A

20cm/7.9in

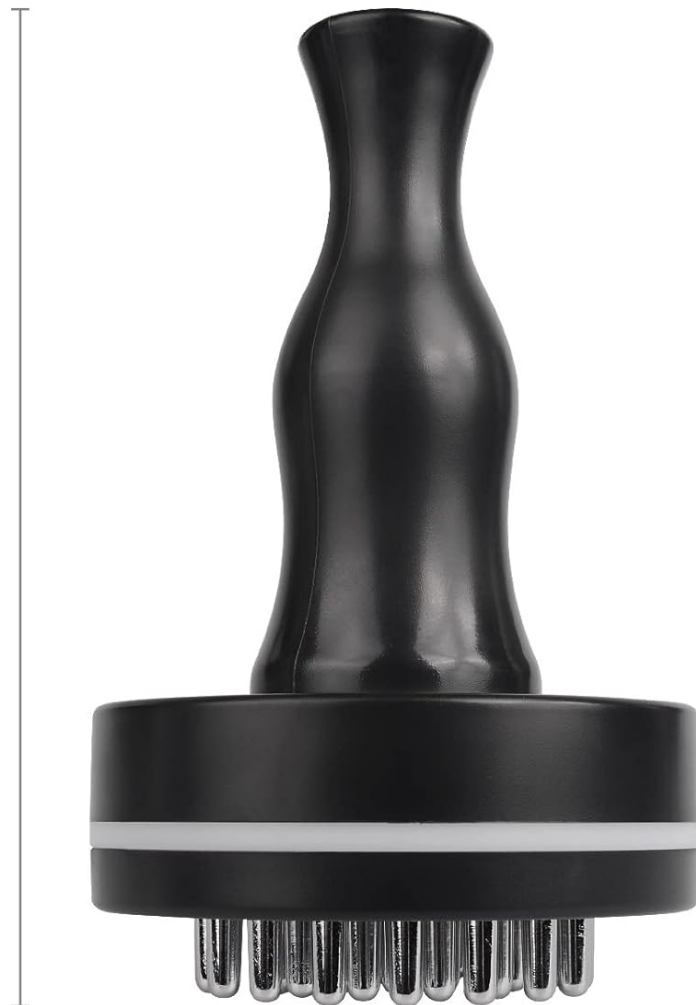


Image: Diagram illustrating the dimensions of the Meridian Brush, showing a height of approximately 20cm (7.9 inches).



Image: Detailed view of the brush head, highlighting 8 far-infrared lamps and 30 smooth stainless steel brush heads designed not to harm the skin and resistant to essential oils.

WARRANTY AND SUPPORT

WAONIQ is committed to providing quality products and customer satisfaction. While specific warranty details are not provided in this manual, please retain your proof of purchase for any warranty claims.

For product support, troubleshooting assistance, or warranty inquiries, please contact WAONIQ customer service through the retailer where you purchased the product or visit the official WAONIQ store on Amazon:

[Visit the WAONIQ Store on Amazon](#)

