

Manuals.plus /

- › SCUMAXCON /
- › SCUMAXCON 7-inch Wireless Carplay Android Auto Car Stereo (Model DZT037) Instruction Manual

SCUMAXCON DZT037

SCUMAXCON 7-inch Wireless Carplay Android Auto Car Stereo (Model DZT037) Instruction Manual

Comprehensive instruction manual for the SCUMAXCON 7-inch Wireless Carplay Android Auto Car Stereo (Model DZT037), covering installation, operation, features, and specifications.

1. INTRODUCTION

This manual provides detailed instructions for the installation, operation, and maintenance of your SCUMAXCON 7-inch Wireless Carplay Android Auto Car Stereo, Model DZT037. Please read this manual thoroughly before using the product to ensure proper functionality and safety.



Figure 1: SCUMAXCON 7-inch Car Stereo main unit with Android interface displayed.

Your browser does not support the video tag.

Video 1: Before and after comparison of the car stereo installation, showcasing the new interface and features.

2. KEY FEATURES

- **CPU & OS:** 8-Core 1.6Ghz processor with Android 13 operating system.
- **Memory:** 4GB RAM + 64GB internal storage.
- **Display:** 7-inch capacitive IPS touchscreen (1280*720 resolution) with split-screen capability.
- **Connectivity:** Wireless Carplay, Wireless Android Auto, WiFi (5G supported), GPS Navigation, Bluetooth 5.0, FM/AM-RDS Radio.
- **Audio:** DSP-36EQ for superior sound quality, compatible with speakers up to 4x4 ohm impedance.
- **Inputs:** USB (2 ports, one 6-pin high-speed charging/data, one 4-pin data), RCA, RVC (Rear View Camera), TPMS (Tire Pressure Monitoring System), DVR (Digital Video Recorder), OBD (On-Board Diagnostics).
- **Control:** Steering Wheel Controls support.
- **Cooling:** All-aluminum shell with integrated cooling fan for stable performance.

Figure 2: Overview of the car stereo's advanced features and connectivity options.

3. VEHICLE COMPATIBILITY

This car stereo is designed for various VW, Skoda, and Seat models. Please verify your vehicle's dashboard and original radio type against the images and list below to ensure compatibility.

Matching vehicles



For VW

For GolfV 5 09/2003 - 2013
 For Tiguan 2007 -2013
 For Scirocco 2008 - 2013
 For Touran 03/2003 -2013
 For Passat 2005 -2014
 For Passat CC 2008 -2011
 For EOS 05/2006- 2014
 For Caddy 2004-2018
 For Polo V 6R 2009 - 2013
 For Jetta 08/2005
 For Sharan 2010 -2014

For skoda

For Altea 05/2004
 For Tolrdo 12/2004
 For Leon 09/2005
 For Altea XI 04/2007
 For Alhambra 2010

For seat

For Fabia Combi 04/2007-2012
 For Yeti 2009 -2012

1. Before your purchases, please check the radio size and the power plug of your car.
2. If there is the problem of battery leakage problem, please contact the Branded after-sales customer service.

Figure 3: Examples of compatible vehicle dashboards.

Compatible Models:

- **For VW:** Jetta, Golf, Passat, Tiguan, Transporter, EOS, CC, Golf V (2009/03-2013), Golf VI (2009-2013), Scirocco (2008-2013), Touran (2003-2013), Passat CC (2008-2011), Caddy (2004-2018), Polo V 6R (2009-2013), Sharan (2010-2014), Amarok (2010-2015), Beetle (2011-2015), Bora (2006-2015), Golf Plus (2004-2013), Magotan (2006-2013), Sagitar (2005-2015), Vento (2009-2015).
- **For Skoda:** Fabia (2007-2013), Octavia (2007-2012), Praktik (2007-2011), Roomster (2006-2015), Superb (2008-2014), Yeti (2009-2015).
- **For Seat:** Altea (2004-2015), Alhambra (2010-2014), Leon (2005-2012), Toledo (2004-2015).

Important Notes:

- After installation, ensure the gateway is set up correctly. Refer to the setup section for details.
- If your original radio is RCD510/RNS510/RNS315 with an RGB camera, an adapter (YX2216 or YX2216-G) may be required.
- The radio does not support Dynaudio audio, Fender audio, or factory-installed power amplifier systems.

4. WHAT'S IN THE BOX

The package includes the following components:

- SCUMAXCON 7-inch Car Stereo Unit
- Power Cable Harness
- RCA Cable Harness
- Reversing Cable
- Audio Output Cable
- CANbus Decoder Box
- GPS Antenna
- 4G Antenna
- USB Cables (x2)
- Microphone



Figure 4: Included components and their typical appearance.

5. SETUP & INSTALLATION

Follow these steps carefully for proper installation. If you are unsure, consult a professional installer.

5.1. Removing the Old Radio Unit

1. Using a plastic pry tool, carefully remove the trim panel surrounding your old car radio.
2. Unscrew the four screws located on both sides of the old unit.
3. Gently pull out the old radio unit and disconnect all wires from its rear. Note the type of power plug (e.g., Quadlock).

Your browser does not support the video tag.

Video 2: Detailed guide on removing the old car radio and connecting the new unit's wiring harness.

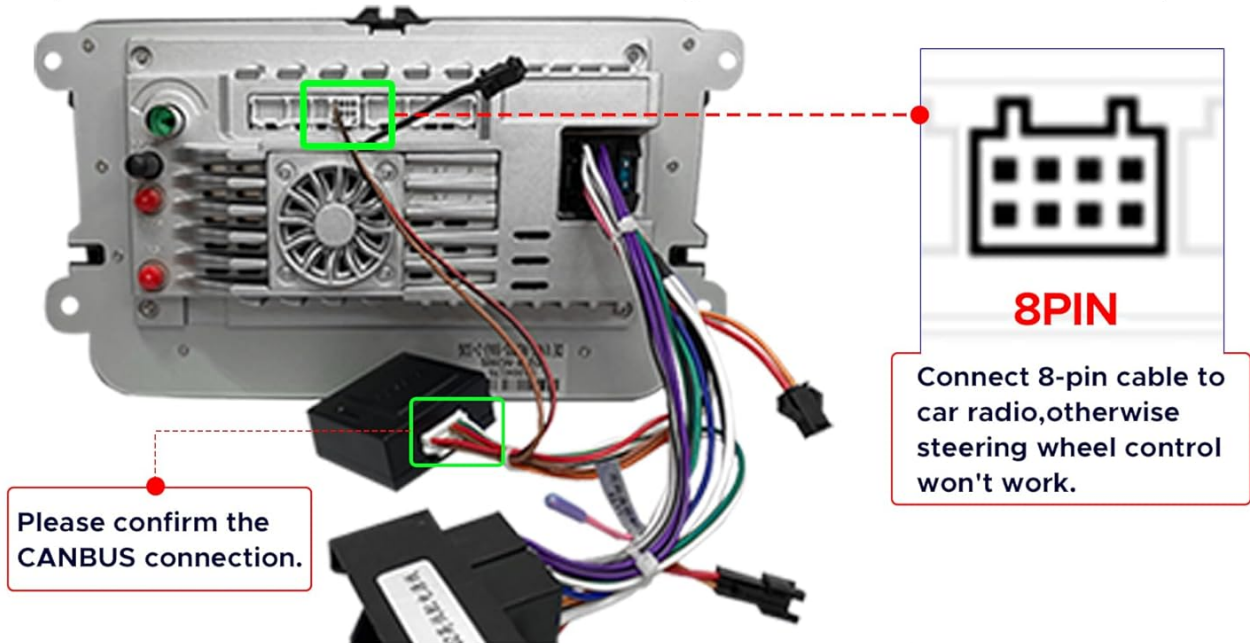
5.2. Connecting the New Stereo

1. **Power Cable & CANbus:**

- Connect the CANbus decoder box to the new stereo's power cable.
 - Plug the CANbus power adapter into the designated port on the new stereo.
 - Determine if the "Anti-leakage plug" in your vehicle's power cable should be connected or disconnected based on your vehicle's configuration. If uncertain, try both options. Incorrect connection may prevent the head unit from shutting down.
 - Connect the main power adapter of the new stereo to the vehicle's power harness.
2. **RCA Cable:** Plug the RCA cable into the new stereo. This cable includes connections for audio output, auxiliary input, and video input (e.g., for a rear view camera).
 3. **Reversing Cable:** Plug the reversing cable into the new stereo. Connect the reversing camera's cable to the vehicle's reverse wire (wiring may vary by camera model).
 4. **Audio Cable:** Connect the audio cable if an external amplifier is being used. The position of this wire is the same interface as the CANbus power cable.
 5. **USB Cables:** Plug both USB cables into the new stereo. Route them to a convenient location, such as the glove compartment.
 6. **Antenna Connections:**
 - Plug the radio antenna adapter into the new stereo and connect it to the vehicle's radio antenna adapter.
 - Stick the GPS antenna receiver to the edge of the dashboard panel and plug its adapter into the new stereo.
 - Stick the 4G antenna receiver to the edge of the windshield and plug its adapter into the new stereo.
 7. **Microphone:** Stick the microphone to the edge of the windshield (or a preferred location) and connect it to the new stereo.

Steering Wheel Control

Step 1: Connect the wires according to the method of the picture.



Step 2: Choose your vehicle model. (For specific settings, please refer to the product description below.)

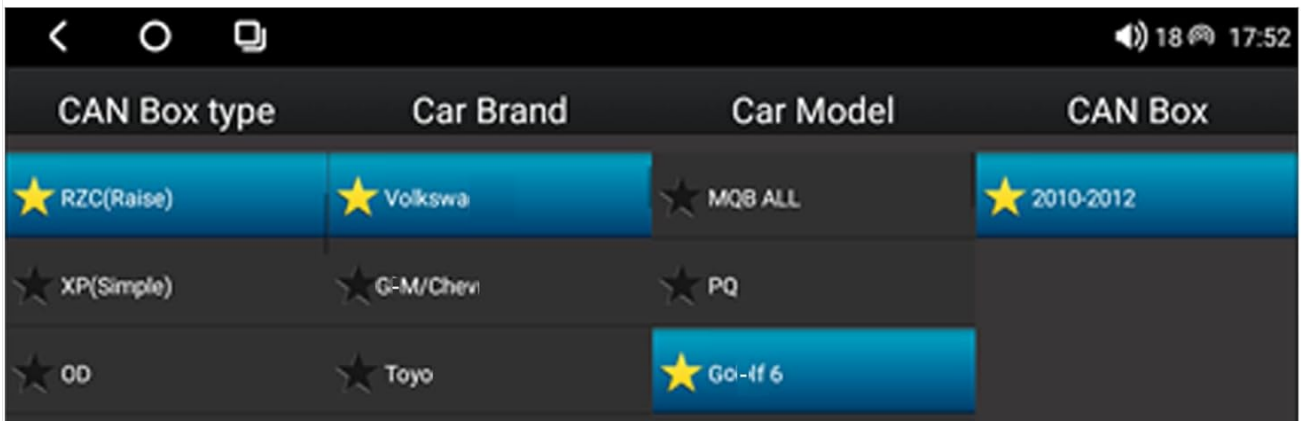


Figure 5: Steering wheel control wiring and CANbus settings.

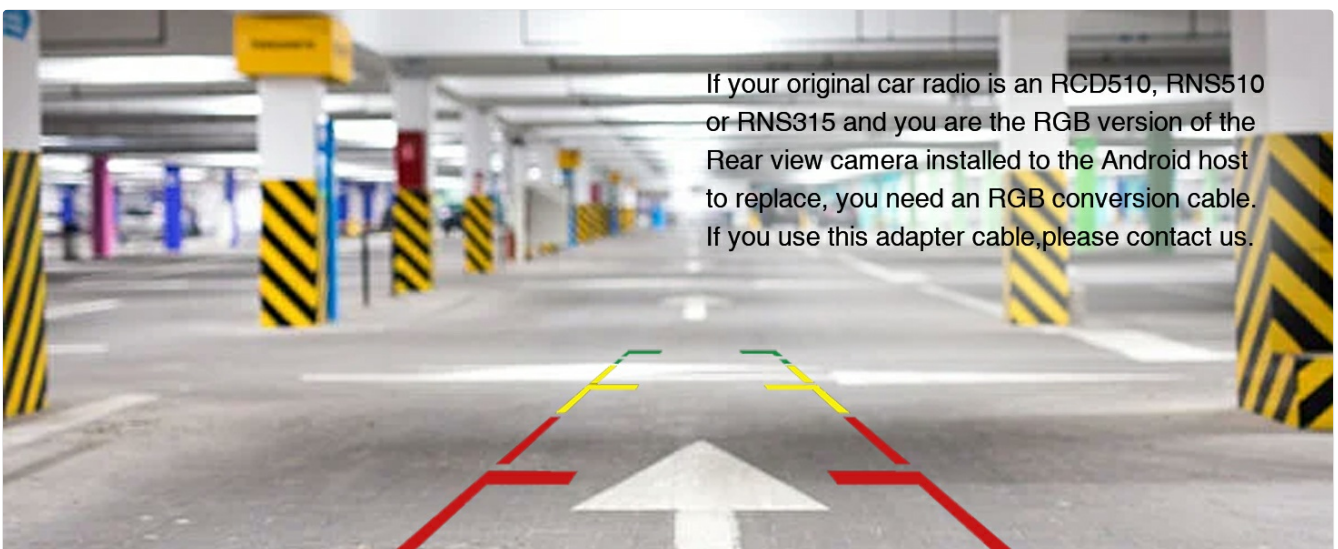


Figure 6: Power cable types and CANbus decoder connection.

5.3. Initial Testing & CANbus Settings

1. Before fully reinstalling the unit, perform a preliminary test to ensure all connections are working.
2. **CANbus Configuration:** This is a critical step for proper vehicle integration.
 - Go to **Settings > Factory**.
 - Enter the password: **3368**, then click **Confirm**.
 - Select **Car Model**.
 - Choose the CANbox type as **RZC** and the car brand as **VW**.
 - Select your specific car model. If your model is not listed, choose a general option like **[PQ-LOW/HIGH]**. The **[LOW/HIGH]** refers to your original vehicle's configuration (e.g., automatic climate control, multifunction steering wheel).

5.4. Final Reinstallation

1. Carefully slide the new stereo unit into the dashboard opening.
2. Fix the new stereo with the four screws on both sides.
3. Reattach the trim panel, ensuring it snaps securely into place.

6. OPERATING INSTRUCTIONS

Your browser does not support the video tag.

Video 3: Demonstration of various applications and sound settings on the car stereo, including Netflix, YouTube, Spotify, and Waze.

6.1. Wireless Carplay & Android Auto

Connect your iOS or Android smartphone wirelessly to access various apps, maps, and media through the car's infotainment system.

- **Wireless Carplay:** Connect iOS phones via Bluetooth. Requires iOS 10 or later.
- **Wireless Android Auto:** Requires a compatible phone with Android 13 or later, 5 GHz Wi-Fi, and an active data plan.
- **Voice Control:** Supports "Hey Siri" or "OK Google" for hands-free operation.

Link to expand and master your drive!



Figure 7: Wireless Carplay and Android Auto interfaces.

Google & Siri Voice Assistant Free Your Hands

Phone Music Navigation Message



Figure 8: Voice assistant functionality.

6.2. Navigation

The unit supports GPS navigation and allows downloading offline maps from the Play Store. You can use popular navigation apps like Google Maps or Waze.

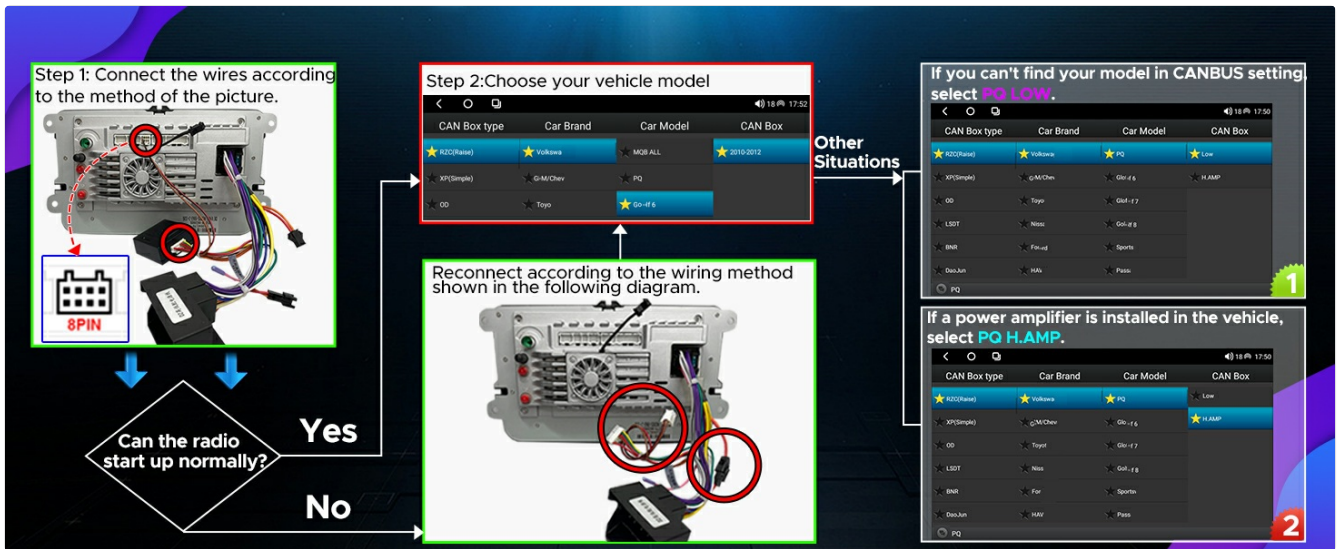


Figure 9: Navigation and other apps available via Google Play Store.

6.3. Media Playback & Streaming

Enjoy smooth and seamless video playback and music streaming from various sources.

- **Streaming Apps:** Supports popular streaming services like Netflix, YouTube, Spotify, and TikTok (requires sufficient CPU, memory, and high-speed WiFi/4G).
- **High-Definition IPS Screen:** Provides clear visuals for videos.
- **Bluetooth 5.0:** Offers faster, more stable connections and enhanced audio quality with support for high-quality audio codecs.

Bored with boring car rides?

EQ Setting



APP Download



Figure 10: EQ settings and available media applications.

6.4. Sound Settings (DSP-36EQ)

The integrated DSP-36EQ allows for precise audio customization.

- Adjust different frequencies (bass, mid-range, treble) to create a personalized sound profile.
- Utilize features like surround sound, stereo sound enhancement, and bass enhancement.

Please Confirm the Different Power Cable

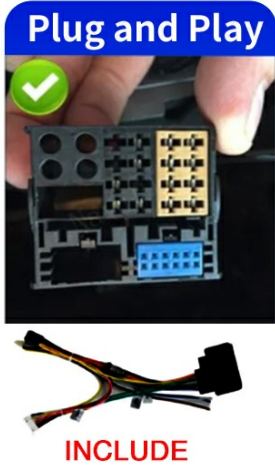


Figure 11: DSP-36EQ sound settings interface.

6.5. Split Screen Functionality

The 7-inch IPS touchscreen supports split-screen mode, allowing you to run two applications simultaneously.

- Example combinations: Map + Music, Map + FM Radio, Picture-in-Picture (PIP).
- The screen features a reflective film to reduce glare and improve visibility in strong light.

Struggling with single - screen limitations?



Map+Music

Split screen



Map+FM



PIP



With a **reflective film**, the screen reduces glare and enhances strong-light visibility.

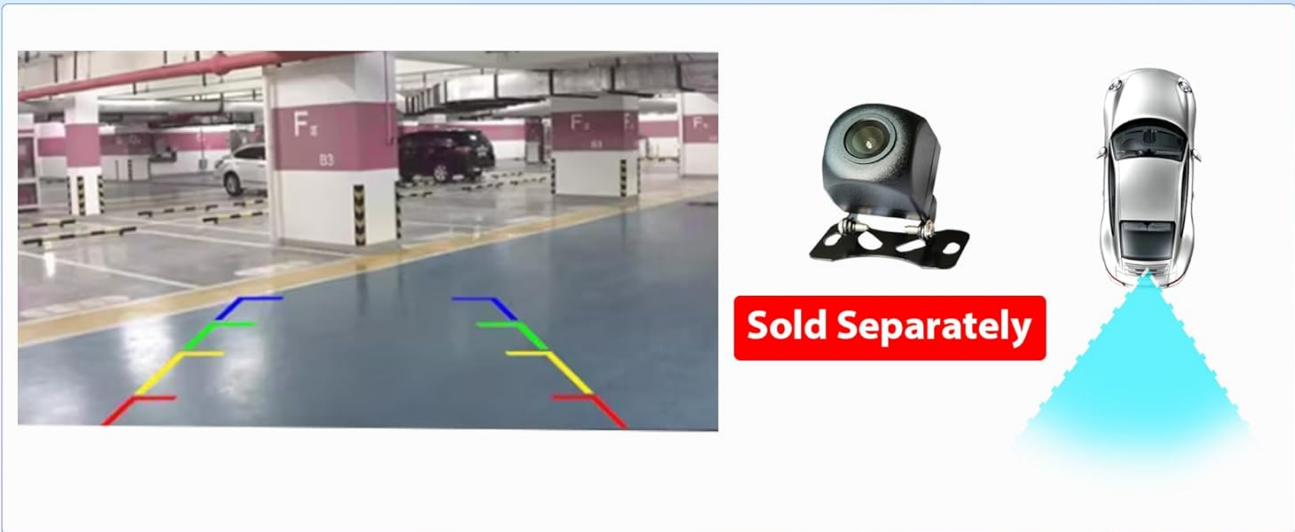
Figure 12: Split-screen and Picture-in-Picture modes.

6.6. Rear View Camera (RVC)

The unit supports a rear view camera for enhanced safety during reversing. The camera is sold separately.

Facing risky reversing and chaotic controls?

Rear View Camera



Steering Wheel Control

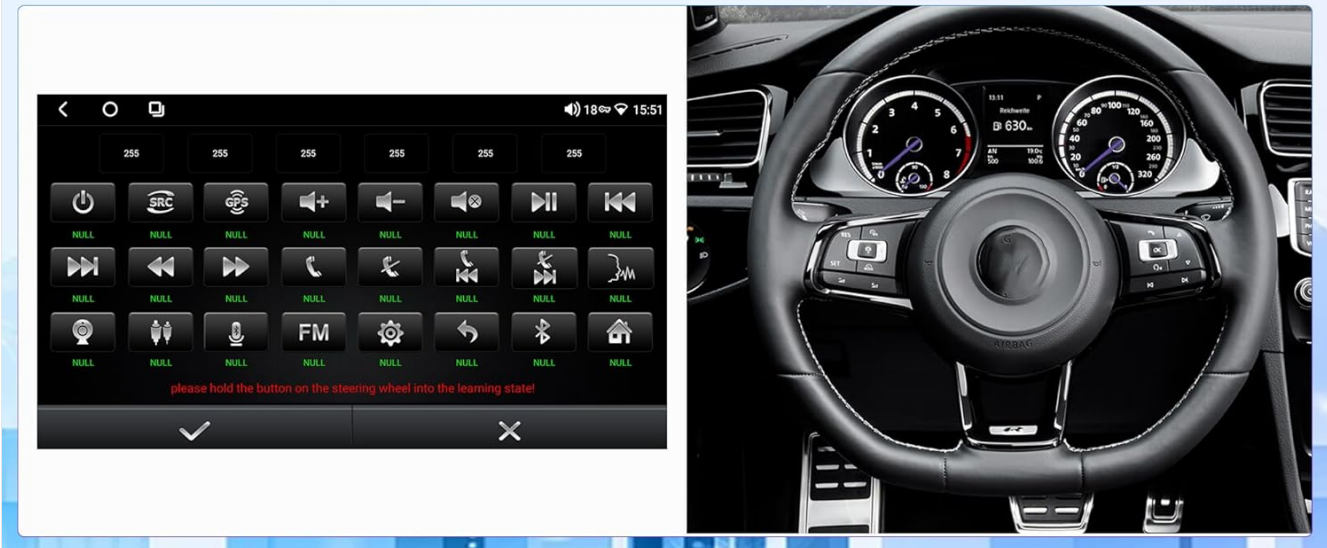


Figure 13: Rear View Camera functionality.

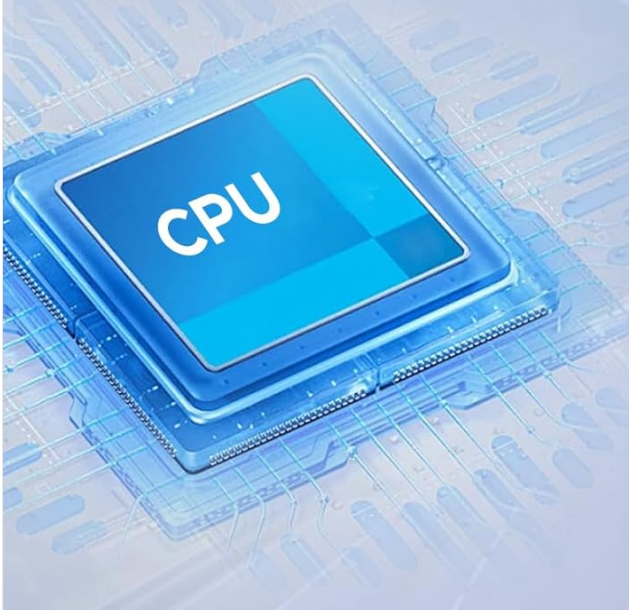
7. MAINTENANCE

- **Cleaning:** Use a soft, dry cloth to clean the screen and unit. Avoid abrasive cleaners or solvents.
- **Software Updates:** Periodically check for software updates to ensure optimal performance and access to new features. Updates can typically be found on the manufacturer's website or through the unit's settings.
- **Cooling System:** The unit features an all-aluminum shell with a cooling fan. Ensure the fan is not obstructed to maintain proper heat dissipation.

Tired of Overheating and Slowdowns?

All-aluminum shell with cooling fan

Strong cooling, stable & durable



Powerful 8-Core CPU

Swift, reactive, top multitasking

Figure 14: Integrated cooling fan for system stability.

8. TROUBLESHOOTING

Common Issues and Solutions

Problem	Possible Cause	Solution
Unit does not power on.	Incorrect power cable connection; blown fuse.	Check all power connections. Verify vehicle's fuse box. Ensure CANbus decoder is correctly connected.
Unit does not shut down properly.	"Anti-leakage plug" incorrectly connected/disconnected.	Refer to the installation video and try connecting/disconnecting the "Anti-leakage plug" as appropriate for your vehicle.
Steering wheel controls not working.	CANbus not configured or 8-pin cable not connected.	Ensure the 8-pin CANbus cable is connected. Go to Settings > Factory (password 3368) > Car Model and select the correct CANbox type and car model.
Rear view camera not displaying.	Incorrect wiring; RGB camera requires adapter.	Check reversing cable connection. If using an RGB camera, ensure the correct RGB to AV adapter is installed.
Wireless Android Auto not connecting.	Phone OS version too old; 5 GHz Wi-Fi not active.	Ensure your Android phone is running Android 13 or later and has 5 GHz Wi-Fi enabled.
Apps like Netflix/YouTube are slow or laggy.	Insufficient CPU/RAM or slow internet connection.	Ensure a stable and fast 5G WiFi/4G LTE connection. Close other background applications.

9. SPECIFICATIONS

Product Specifications

Feature	Detail
Manufacturer	SCUMAXCON
Item Weight	3.45 pounds
Package Dimensions	12.09 x 7.76 x 5.39 inches
Item Model Number	DZT037
Special Features	Bluetooth, GPS Navigation, OPS/RVC, Wireless Android Auto, Wireless Carplay
Vehicle Service Type	Car
Screen Size	7 Inches
Connectivity Technology	Bluetooth, USB, Wi-Fi
Map Type	North America (offline maps downloadable)
Audio Output Mode	Stereo
Mounting Type	Panel Mount
Resolution	1280 x 720

10. WARRANTY & SUPPORT

For warranty information and technical support, please refer to the documentation included with your product or contact SCUMAXCON customer service directly. Keep your purchase receipt as proof of purchase.

If you encounter any issues not covered in this manual, please reach out to the seller or manufacturer for assistance.