

[Manuals.plus](#) /

> [TABYIK](#) /

> TABYIK 35 OZ Small Dehumidifier User Manual

TABYIK DH-CS01

TABYIK 35 OZ Small Dehumidifier User Manual

Brand: TABYIK | Model: DH-CS01

1. INTRODUCTION

Thank you for choosing the TABYIK 35 OZ Small Dehumidifier. This compact and efficient dehumidifier is designed to reduce humidity in small spaces, creating a more comfortable and healthy environment. It features quiet operation, colorful ambient lighting, and an automatic shut-off function for convenience and safety.

This manual provides important information regarding the setup, operation, maintenance, and troubleshooting of your dehumidifier. Please read it thoroughly before use and retain it for future reference.





Image: Front view of the TABYIK 35 OZ Small Dehumidifier, showing its compact design and visible water tank.

2. PRODUCT FEATURES

- **High Efficiency:** Capable of collecting up to 16oz (450ml) of water per day in environments of 86°F and 80% RH.
- **Quiet Operation:** Operates at a low noise level of 28dB, ideal for bedrooms and offices.
- **Colorful LED Light:** Features a separate light button to emit 7-color romantic atmosphere lights.
- **Large Water Tank:** Equipped with a 1000ml (35OZ) transparent tank for easy monitoring and cleaning.
- **Auto Shut-Off:** Automatically turns off when the water tank is 700-800ml full, with a red flashing light indicator.
- **Portable Design:** Compact size (5.9"D x 5.9"W x 10.1"H) with a built-in handle for easy placement in various small spaces.

Dehumidifier Saves your Energy

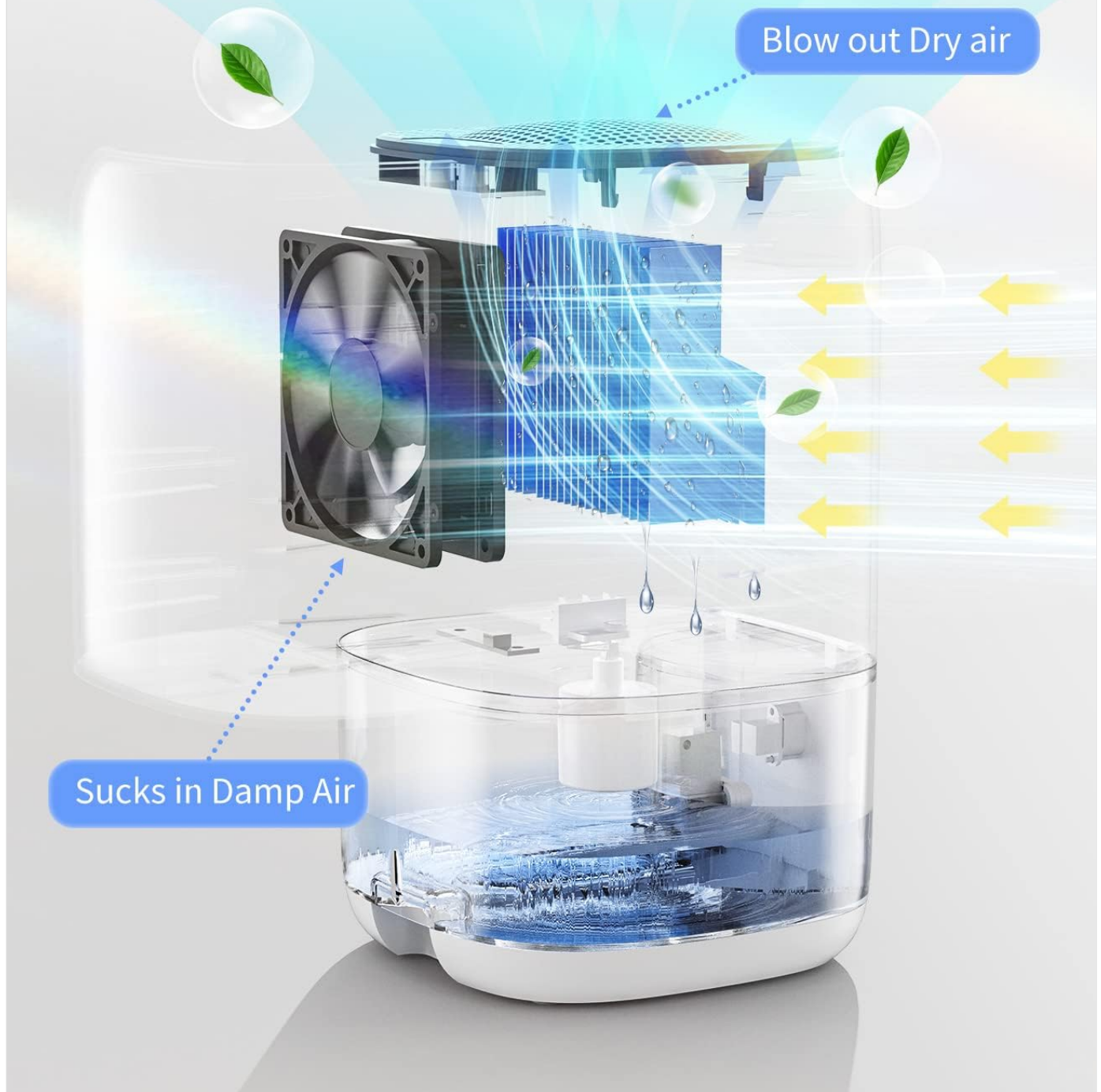


Image: Internal diagram illustrating how the dehumidifier processes damp air into dry air.

3. SETUP

1. **Unpack the Dehumidifier:** Carefully remove the dehumidifier and all accessories from the packaging. Ensure all components listed in the 'Included Components' section are present.
2. **Choose a Location:** Place the dehumidifier on a flat, stable surface in the desired small space (e.g., bedroom, bathroom, RV, closet).
3. **Ensure Proper Airflow:** It is crucial to keep the top air inlet and the back air outlet of the dehumidifier free from blocking. Maintain at least 6 inches (15 cm) of space around all sides of the unit for optimal performance. Do not

place it directly against a wall or in a confined space without adequate ventilation.

4. **Connect Power:** Plug the adapter into the dehumidifier's power port, then plug the adapter into a suitable electrical outlet.

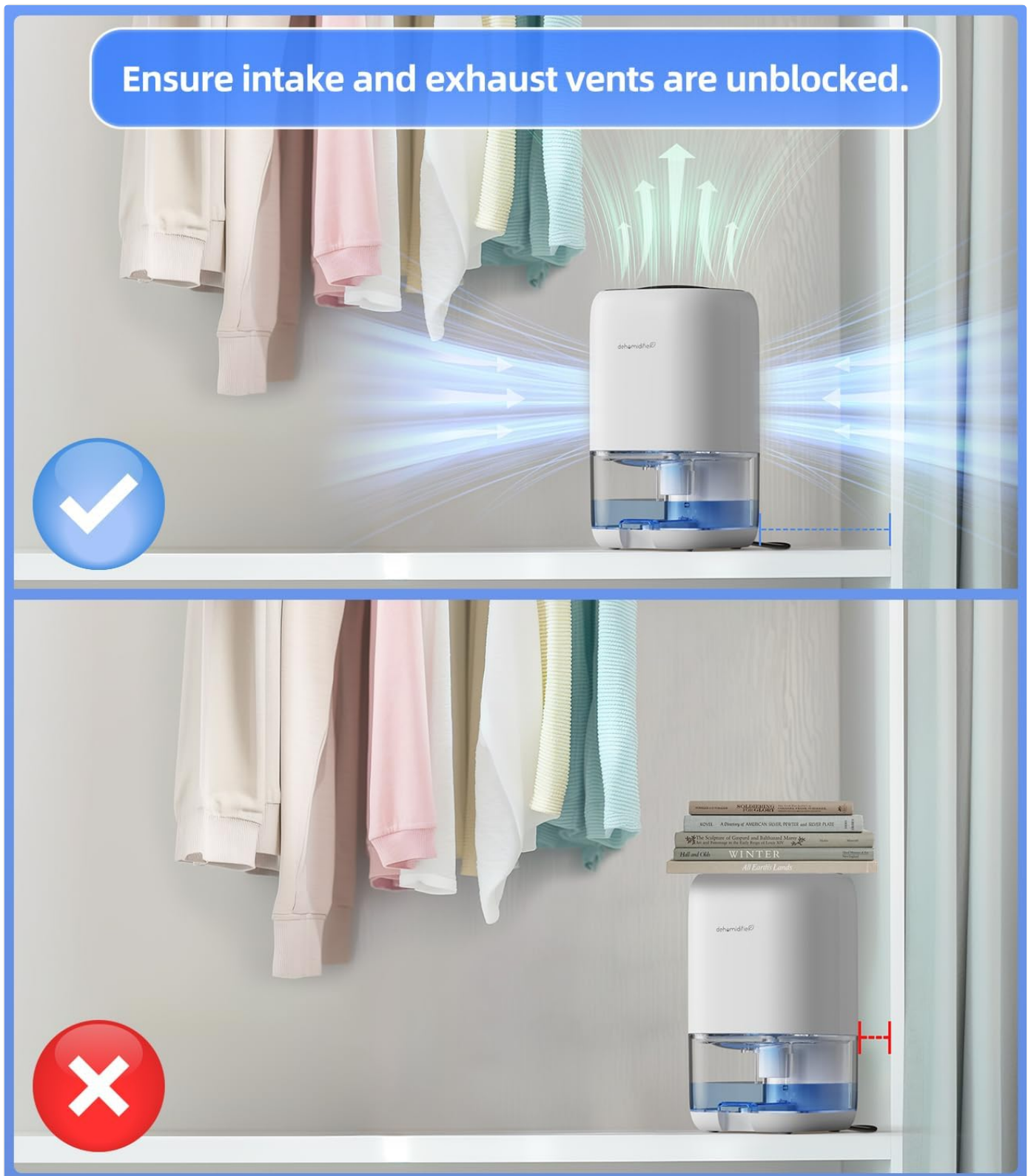


Image: Illustration demonstrating correct placement for optimal airflow, ensuring vents are unblocked.

4. OPERATING INSTRUCTIONS

1. **Power On/Off:** Press the power button () located on the top of the unit to turn the dehumidifier on or off. The unit will begin operating in continuous mode.
2. **Colorful Light Control:** Press the light button () to cycle through the 7-color ambient lighting options. Press once to

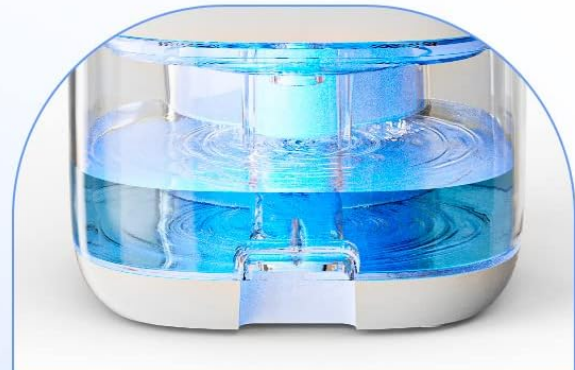
turn on, a second time to lock on a specific color, and a third time to turn off the light.

3. **Water Tank Monitoring:** The transparent water tank allows you to visually monitor the collected water volume.
4. **Auto Shut-Off:** When the water tank reaches approximately 700-800ml, the dehumidifier will automatically shut off, and the light will flash red to indicate that the tank needs to be emptied.



Image: Demonstration of the colorful night light feature, showing different light modes.

Auto shut-off protection



Dehumidifier is working normally



Red warning light flicker when water tank is 700~800ml full, and dehumidifier auto shut-off

Image: Visual guide for the auto shut-off protection, indicating normal operation and full tank warning.

5. MAINTENANCE

Regular maintenance ensures the longevity and optimal performance of your dehumidifier.

1. **Emptying the Water Tank:** When the water tank is full and the unit has automatically shut off, carefully pull out the water tank using the groove design at the bottom. Pour out the collected water.
2. **Cleaning the Water Tank:** Clean the water tank regularly with mild soap and water to prevent mold and mildew buildup. Rinse thoroughly and ensure it is completely dry before reinserting.
3. **Cleaning the Air Filter:** The dehumidifier includes a removable filter to capture dust. Clean the filter regularly (e.g., every 2-4 weeks, depending on usage and air quality) by gently brushing off dust or rinsing with water. Ensure the

filter is completely dry before reinserting.

4. **Exterior Cleaning:** Wipe the exterior of the unit with a soft, damp cloth. Do not use abrasive cleaners or solvents.



Image: Visual representation of the easy-to-use features, including the removable filter for cleaning.

6. TROUBLESHOOTING

Problem	Possible Cause	Solution
Dehumidification efficiency is low.	Low ambient temperature or humidity.	The efficiency of the dehumidifier depends on temperature and humidity. Higher values increase the speed of water collection. Ensure the room temperature is above 41°F (5°C) and humidity is above 45% for effective operation.
Unit is not collecting water or not turning on.	Water tank is full or improperly seated.	Empty the water tank and ensure it is correctly reinserted into the unit. The red light will flash if the tank is full.
Unit is not operating effectively.	Air inlet/outlet blocked; dirty filter.	Ensure the top air inlet and back air outlet are not blocked. Clean the air filter regularly as described in the Maintenance section.
Unusual noise or smell.	Internal issue.	Turn off the unit and unplug it. Contact customer support for assistance.



Image: Common questions and answers for troubleshooting.

7. SPECIFICATIONS

Specification	Detail
Brand	TABYIK
Model Name	DH-CS01
Color	White
Floor Area Coverage	280 Square Feet
Capacity (Water Tank)	1000 Milliliters (35 OZ)
Dehumidification Capacity	0.45 Liters per Day (16oz)
Product Dimensions (D x W x H)	5.9"D x 5.9"W x 10.1"H
Item Weight	2.2 Pounds
Wattage	40 watts
Operation Mode	Continuous
Noise Level	28dB
Material	Plastic
Included Components	Adapter, Dehumidifier, User Manual

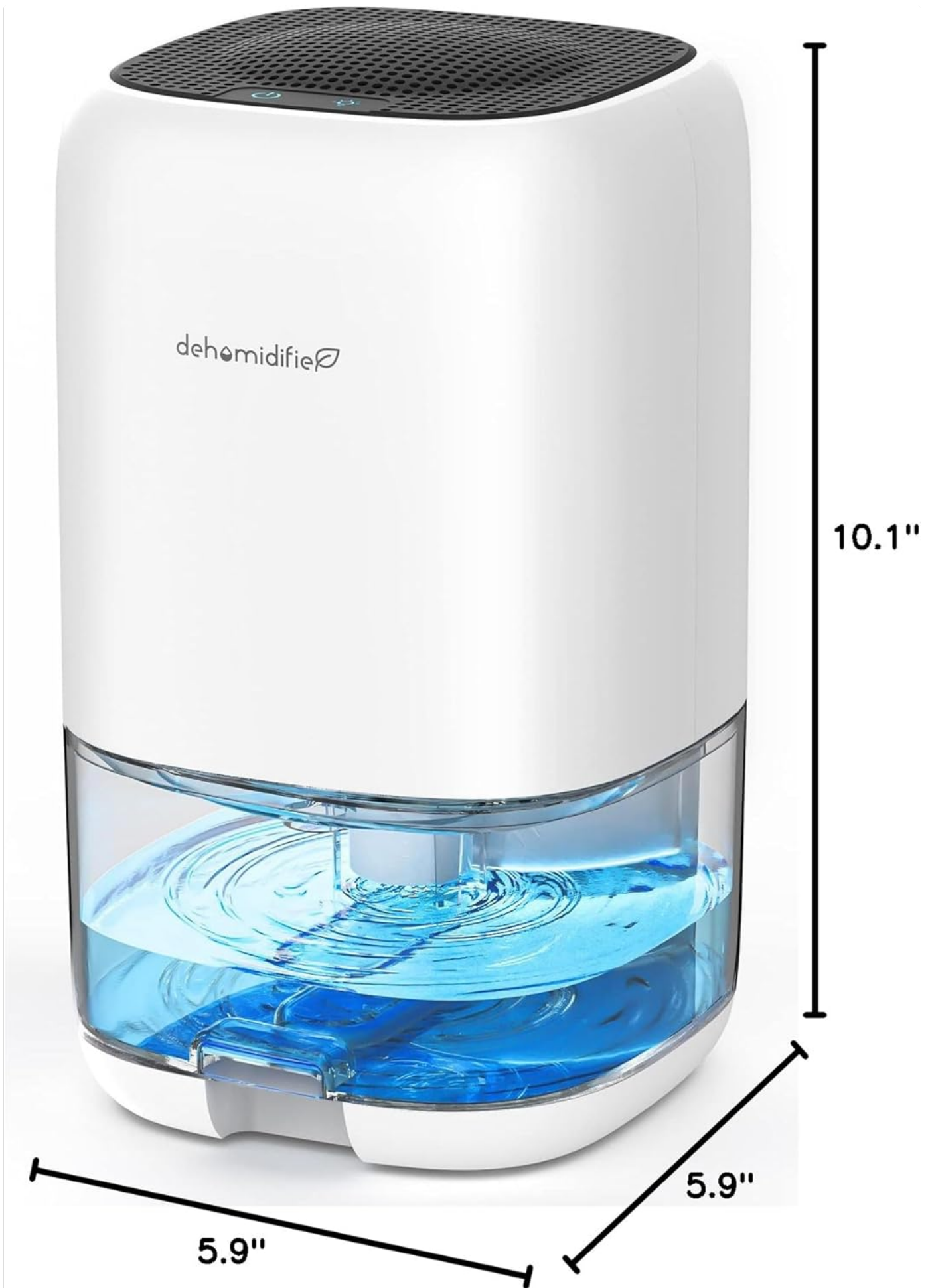


Image: Product dimensions for easy reference.

8. WARRANTY AND SUPPORT

For detailed warranty information, please refer to the official product documentation included with your purchase. If you encounter any issues or have questions not covered in this manual, please contact TABYIK customer support.

You can also refer to the official User Guide PDF for more comprehensive information [Download User Guide \(PDF\)](#)

