

## Hagibis MC30 Pro

# Hagibis USB-C Hub with Hard Drive Enclosure (MC30 Pro) User Manual

Model: MC30 Pro

## 1. INTRODUCTION

The Hagibis MC30 Pro is a versatile 2-in-1 device combining a USB-C docking station with a 2.5-inch SATA hard drive enclosure. This manual provides instructions for the proper installation, operation, and maintenance of your device.



Image 1.1: The Hagibis MC30 Pro showcasing its dual functionality as a USB-C hub and a 2.5-inch SATA hard drive enclosure.

## 2. PRODUCT OVERVIEW

The MC30 Pro offers multiple connectivity options and storage expansion in a compact design. It features various ports and a dedicated slot for a 2.5-inch SATA HDD/SSD.

### Key Features:

- **2-in-1 Design:** Integrates a USB-C hub and a 2.5-inch SATA hard drive enclosure.
- **Multi-functional USB-C Hub:** Includes USB 3.0, USB 2.0, SD Card Reader, and Micro SD Card Reader ports.
- **HDMI Output:** Supports video output.
- **Power Delivery (PD):** For charging compatible devices.
- **Dual Interface Cable:** Equipped with a USB-A/USB-C cable for broad compatibility.
- **Tool-Free Installation:** Easy setup for 2.5-inch SATA drives.
- **Durable Construction:** Made of premium aluminum alloy for efficient heat dissipation.



Image 2.1: Front view of the Hagibis MC30 Pro, highlighting the various ports and the hard drive enclosure.

## 3. SETUP INSTRUCTIONS

### 3.1 Installing a 2.5-inch SATA Hard Drive/SSD

The MC30 Pro features a tool-free design for easy installation of 2.5-inch SATA HDDs or SSDs.

1. **Step 1: Open the Enclosure.** Gently pull out the back cover of the hard drive enclosure.
2. **Step 2: Connect the Drive.** Align your 2.5-inch SATA HDD or SSD with the SATA interface inside the enclosure and firmly connect it. Ensure the drive is seated correctly.
3. **Step 3: Close the Enclosure.** Slide the back cover back into place until it clicks securely.

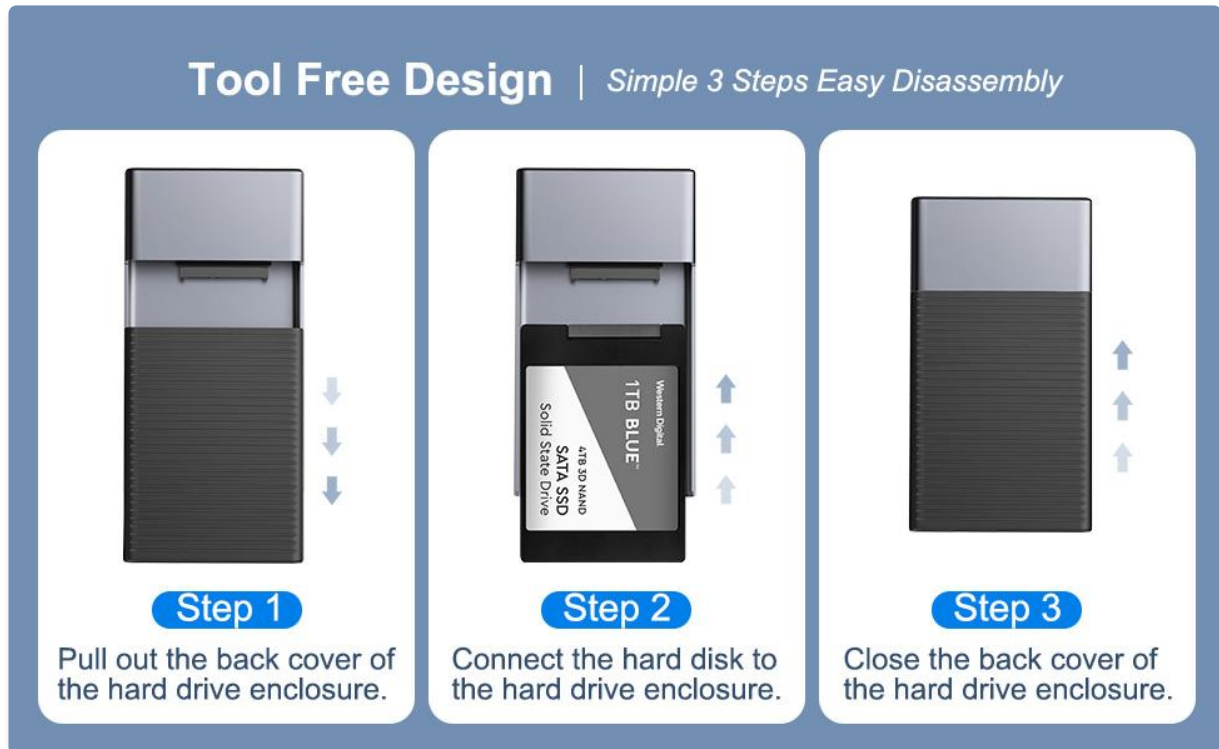


Image 3.1: Visual guide for the three-step tool-free installation of a 2.5-inch SATA drive into the enclosure.

# Real HDMI 2.1 Version

Provide 2.5 inch SATA interface to connect HDD / SSD.

\*Support hard disk with thickness less than 15mm.



Image 3.2: A close-up view of a hand inserting a 2.5-inch SATA hard drive into the open enclosure of the MC30 Pro.

## 3.2 Connecting the Hub to Your Device

The MC30 Pro comes with a dual-interface cable, allowing connection to both USB-A and USB-C ports on your host device.

- Connect the appropriate end of the dual-interface cable (USB-A or USB-C) to your computer, laptop, tablet, or smartphone.
- Connect the other end of the cable to the USB-C input port on the Hagibis MC30 Pro.
- The device is plug-and-play and should be recognized automatically by your operating system (Windows, macOS, Linux, Chrome OS).



Image 3.3: The included dual-interface cable with both USB-A and USB-C connectors for versatile host device compatibility.

## 4. OPERATING INSTRUCTIONS

---

### 4.1 Using USB Ports

The MC30 Pro provides USB 3.0 and USB 2.0 ports for connecting peripherals.

- Connect USB devices such as keyboards, mice, flash drives, or external hard drives to the available USB-A ports.
- The USB 3.0 port offers high-speed data transfer up to 5Gbps.

### 4.2 Using SD/Micro SD Card Slots

Insert your SD or Micro SD cards into the corresponding slots for data access.

- Ensure the card is inserted correctly, facing the right direction.
- The card reader functions as a single logical drive, meaning only one card (SD or Micro SD) can be read at a time.

# Not Only Expand Capacity But Also External USB and Card Reader

SD / Micro SD card slot, USB3.0 and USB2.0 interfaces are provided

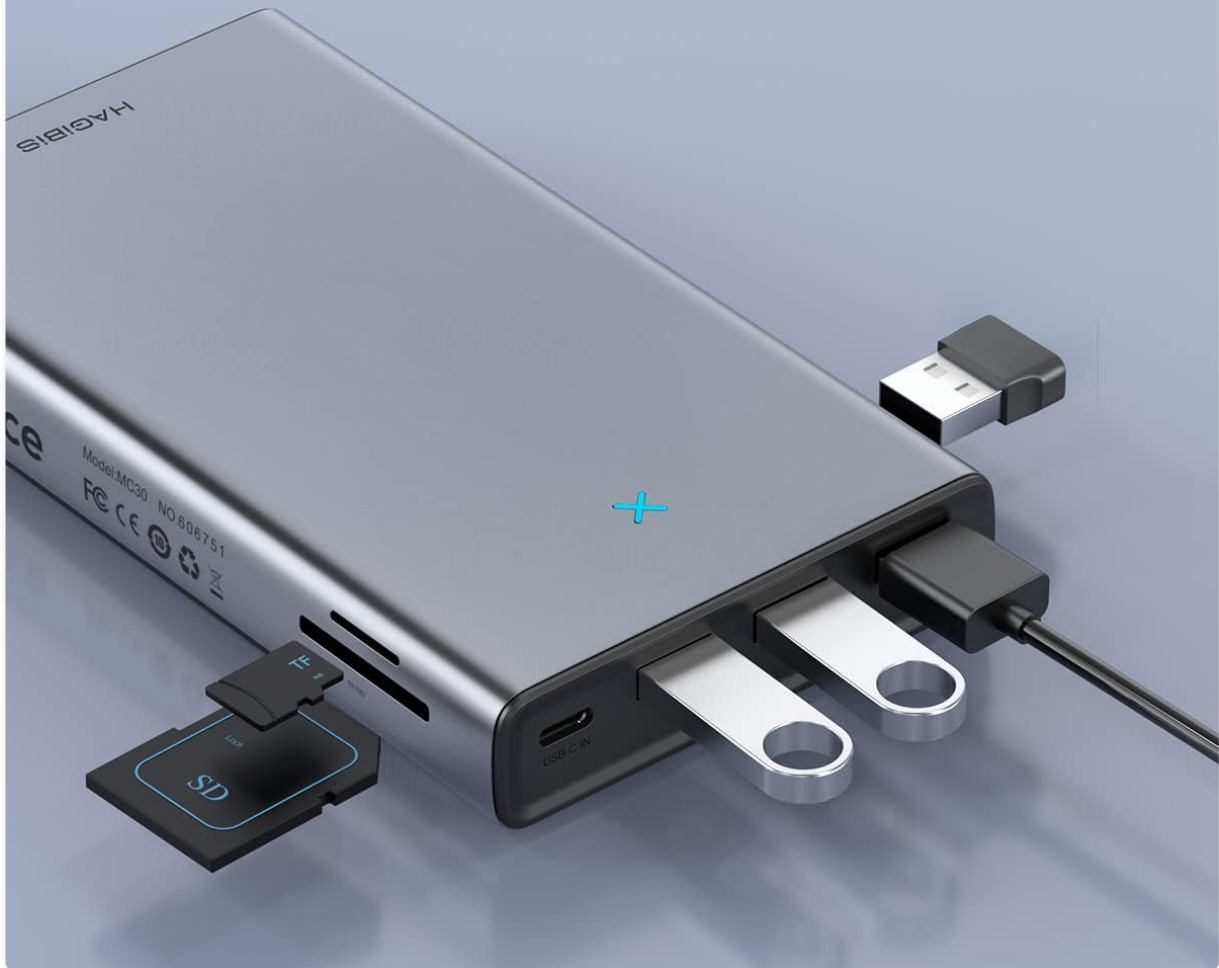


Image 4.1: The Hagibis MC30 Pro in use, demonstrating connected USB devices and an SD card.

## 4.3 HDMI Output

Connect an HDMI cable from the MC30 Pro's HDMI port to an external monitor or TV for video output.

- Ensure your display device is set to the correct HDMI input.
- The hub supports various resolutions and refresh rates.

## 4.4 Power Delivery (PD)

The USB-C PD port allows you to charge your host device while using the hub.

- Connect your USB-C power adapter to the PD port on the MC30 Pro.
- The hub will pass power through to your connected laptop or tablet.

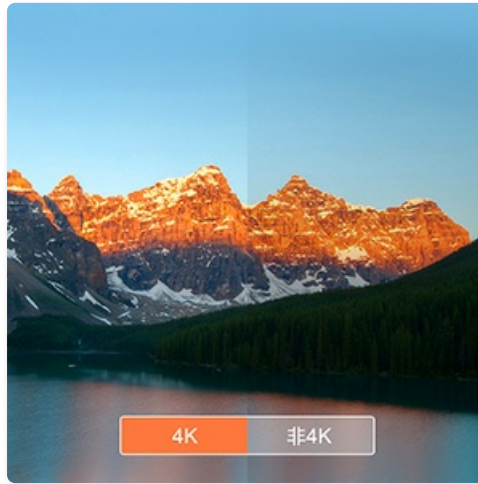


Image 4.2: The Hagibis MC30 Pro connected to a laptop via USB-C and receiving power from a 100W power adapter.

## 5. COMPATIBILITY

---

The Hagibis MC30 Pro is designed for broad compatibility with various devices and operating systems.

- **Compatible Devices:** MacBook, iPad Pro, Mac Mini, laptops, Samsung Note10/S10, Huawei P40/Mate30, and other devices with USB-A or USB-C ports.
- **Operating Systems:** Windows 10/8/7/XP/Vista, Mac OS, Linux, Chrome OS.

## 6. MAINTENANCE

---

To ensure the longevity and optimal performance of your Hagibis MC30 Pro, follow these maintenance guidelines:

- **Cleaning:** Use a soft, dry cloth to clean the exterior of the device. Avoid liquid cleaners or abrasive materials.
- **Heat Dissipation:** The aluminum alloy casing is designed for efficient heat dissipation. Ensure the device is placed in a well-ventilated area during extended use. Avoid covering the device.
- **Storage:** When not in use, store the device in a cool, dry place away from direct sunlight and extreme temperatures.
- **Handling:** Avoid dropping or subjecting the device to strong impacts.

## 7. TROUBLESHOOTING

---

If you encounter issues with your Hagibis MC30 Pro, refer to the following common problems and solutions:

- **Device Not Recognized:**
  - Ensure the USB cable is securely connected to both the hub and your host device.
  - Try connecting the hub to a different USB port on your host device.
  - Restart your host device.
  - Verify that your operating system drivers are up to date.
- **Hard Drive Not Detected:**
  - Ensure the 2.5-inch SATA HDD/SSD is correctly seated and connected inside the enclosure.

- Check if the hard drive is properly initialized and formatted in your operating system's Disk Management (Windows) or Disk Utility (macOS).
  - Test the hard drive in another enclosure or directly connect it to a computer if possible, to rule out drive failure.
- **HDMI Output Not Working:**
    - Verify the HDMI cable is securely connected to both the hub and the display.
    - Ensure the display is set to the correct HDMI input source.
    - Try a different HDMI cable or display.
    - Check your host device's display settings.
- **Slow Data Transfer Speed:**
    - Ensure you are using a USB 3.0 port on both the hub and your host device for optimal speeds.
    - The actual speed may vary depending on the host device, operating system, and the type of drive used.
    - Note that for Apple M1 chip devices, transmission speed may be limited to approximately 300MB/s due to chip architecture.

## 8. SPECIFICATIONS

Feature	Specification
Brand	Hagibis
Model	MC30 Pro
Hardware Interface	USB Type C
Color	Grey
Product Dimensions (L x W x H)	5.8" x 3.2" x 0.8" (148mm x 82mm x 20mm)
Hard Disk Form Factor	2.5 Inches (SATA HDD/SSD)
Data Transfer Rate	Up to 5 Gigabits Per Second (USB 3.0)
Enclosure Material	Aluminum Alloy
Compatible Devices	Camera, Desktop, Laptop, Smartphone, Tablet
Supported OS	Windows, Mac OS, Linux, Chrome OS

## 9. WHAT'S IN THE BOX

The Hagibis MC30 Pro package includes the following items:

- Hagibis USB-C Hub with Hard Drive Enclosure (MC30 Pro)
- USB-A/USB-C Dual Interface Data Cable
- User Manual



- Packing Box



- Product



- USB Cable



- User Guide/Warranty Card

Image 9.1: The Hagibis MC30 Pro, its dual-interface cable, and the user manual, as typically found in the product packaging.

## 10. WARRANTY AND SUPPORT

The Hagibis MC30 Pro comes with a 1-year warranty from the date of purchase. For technical support, warranty claims, or further assistance, please contact Hagibis customer service through their official website or the retailer where the product was purchased.

