

Manuals+

[Q & A](#) | [Deep Search](#) | [Upload](#)

manuals.plus /

- › [Canon](#) /
- › [Canon PIXMA TR8620a All-in-One Printer User Manual](#)

Canon TR8620a

Canon PIXMA TR8620a All-in-One Printer User Manual

Model: TR8620a

1. INTRODUCTION

The Canon PIXMA TR8620a is a versatile All-in-One printer designed for home office environments, offering print, copy, scan, and fax functionalities. It features wireless connectivity, an automatic document feeder, and a user-friendly touchscreen interface, making it suitable for a wide range of document and photo tasks.



Figure 1.1: Front view of the Canon PIXMA TR8620a All-in-One Printer.

2. WHAT'S IN THE BOX

Upon unboxing your Canon PIXMA TR8620a, ensure all the following components are present:

- PIXMA TR8620a Wireless Home Office All-in-One Printer
- Set of Canon Standard Ink Tanks (PGBK / BK / C / M / Y)
- RJ-11 Telephone / Modem Cord
- Power Cord
- Documentation (User Manual, Setup Guide)

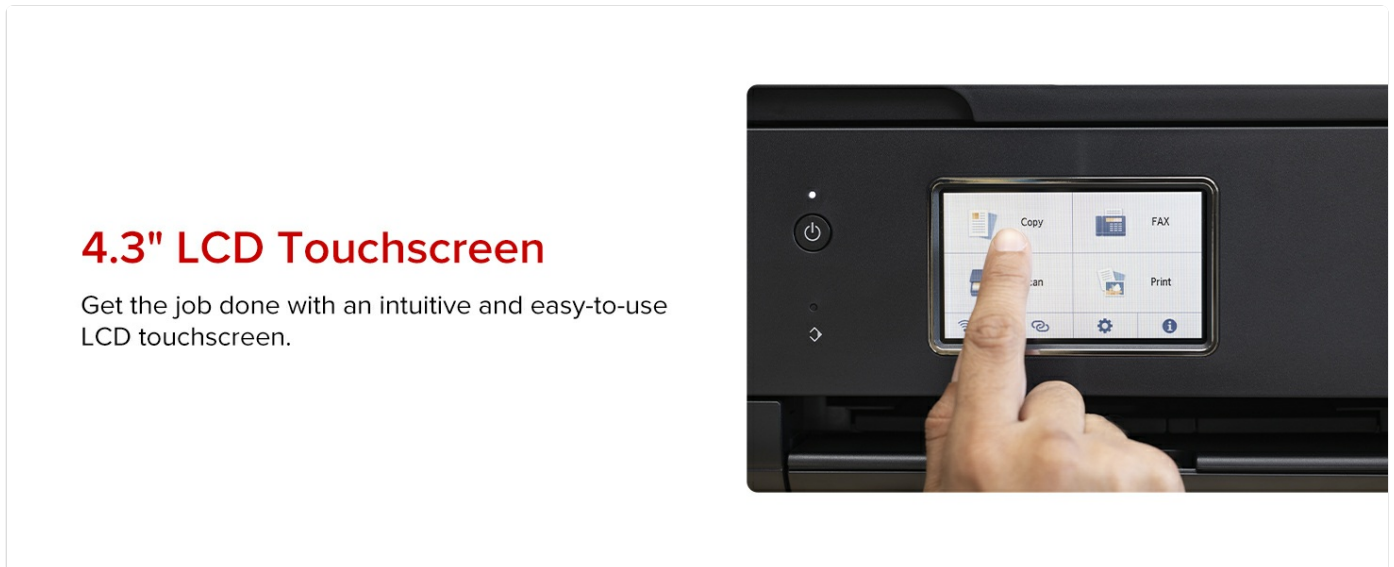


Figure 2.1: Illustration of the items included in the product packaging.

3. SETUP

Follow these steps for the initial setup of your printer:

1. **Unpack the Printer:** Carefully remove the printer from its packaging and remove all protective tapes and packing materials.
2. **Connect Power:** Plug the power cord into the printer and then into a wall outlet. Turn on the printer using the power button.
3. **Install Ink Tanks:** Open the printer's access cover and install the five individual ink tanks into their corresponding slots. Ensure they click into place.

MOBILE COMPATIBILITY

Conveniently print and scan from your compatible mobile device.

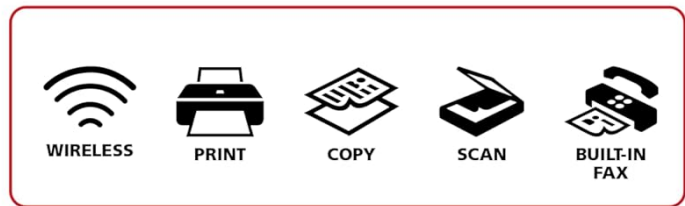


Compatible with: Windows, Mac, Chromebook

Figure 3.1: Proper installation of ink tanks.

4. **Load Paper:** Load paper into the front paper cassette or the rear paper tray. The printer supports up to 100 sheets in the bottom cassette and 100 sheets in the rear tray.

PIXMA TR8620a Wireless Home Office All-In-One Printer



COMPACT
SIZE



MEMORY CARD
SLOT



4.3" COLOR LCD
TOUCHSCREEN



20-SHEET
AUTO DOCUMENT
FEEDER

HIGHLIGHTED FEATURES

- AUTO 2-SIDED PRINTING
- 5 INDIVIDUAL INK TANKS
- VERSATILE PAPER SUPPORT
- 100 SHEET REAR PAPER TRAY
- 100 SHEET BOTTOM CASSETTE
- SD MEMORY CARD SLOT
- BORDERLESS PHOTO PRINTING

CONNECTIVITY

PC + MOBILE DEVICE PRINTING

Compatible with Windows,[®] Mac, Chromebook, iOS,[®] and Android.[™]



WIRELESS



MOBILE PRINTING



Canon
PRINT App



COMPATIBLE INKS



Figure 3.2: Loading paper into the printer's tray.

5. **Initial Setup on LCD:** Follow the on-screen instructions on the 4.3" color LCD touchscreen to select your language, region, and perform print head alignment.
6. **Connect to Network:** Establish a stable and reliable connection using Dual Band Wi-Fi (2.4GHz or 5GHz). You can connect via Easy Wireless Connect or by manually entering your Wi-Fi password on the touchscreen.



Create professional posters and flyers with PosterArtist online.
Easy-to-use, free, template-driven poster creation application.



Figure 3.3: Wi-Fi setup screen on the printer's LCD.

7. **Install Software/Drivers:** Install the necessary drivers and software on your computer or mobile device for full functionality.

4. OPERATING THE PRINTER

The Canon PIXMA TR8620a offers a range of functions accessible via its intuitive touchscreen and connectivity options.

4.1 Core Functions: Print, Copy, Scan, Fax

This printer is a 4-in-1 device, capable of handling various office tasks:

- **Printing:** Achieve fast print speeds of approximately 15 ipm for black and 10 ipm for color documents. Supports auto 2-sided printing to save paper.
- **Copying:** Easily duplicate documents with options for various settings.
- **Scanning:** Digitize documents and photos. The 20-sheet Auto Document Feeder (ADF) allows for efficient scanning of multi-page documents.
- **Faxing:** Send and receive faxes directly from the printer.



Figure 4.1: Overview of the printer's key features and components.

VERSATILE MEDIA SUPPORT

Print photos, high resolution paper, envelopes, and more!



Figure 4.2: The 4.3" LCD touchscreen for easy navigation.

COMPACT DESIGN

Designed with a small footprint
to fit your workspace.



Figure 4.3: The 20-sheet Auto Document Feeder (ADF) for multi-page tasks.

4.2 Mobile Connectivity

Print and scan directly from your compatible mobile devices using:

- **Canon PRINT App:** For comprehensive control and printing from your smartphone or tablet.
- **Apple AirPrint®:** Seamless printing from Apple iOS devices.
- **Mopria® Print Service:** For Android device compatibility.

Stable, Reliable Connection

Stable and reliable connection with Dual Band Wi-Fi (2.4GHz or 5GHz).



Figure 4.4: Mobile printing and scanning options.

4.3 Alexa Integration

Connect your Canon PIXMA TR8620a to Alexa for convenient features:

- **Ink Level Notifications:** Receive alerts when ink levels are low.
- **Smart Reorders:** Enroll in smart reorders through the Alexa app to automatically replenish ink supplies when needed, without a subscription.
- **Voice Commands:** Use voice commands like "Alexa, discover my printer" for easy setup and control.

Auto Duplex Printing

Built-in Auto Duplex Printing can automatically print on both sides of the paper, helping you use less paper for large print jobs.



Figure 4.5: Steps for setting up Alexa smart reorders.

5. MAINTENANCE

Proper maintenance ensures the longevity and optimal performance of your printer.

5.1 Ink Tank Management

The PIXMA TR8620a uses a 5-individual ink tank system (Pigment Black, Black, Cyan, Magenta, Yellow). Replace ink tanks when prompted by the printer or when print quality deteriorates.

Easy to Use

With front and rear paper feeding, you can simultaneously hold plain paper in the front cassette and extend the rear tray when you want to print on photo paper or other paper types. Load up to 200 sheets—100 sheets* in the bottom cassette, 100 sheets* in the rear tray.



*Plain paper, letter size

Figure 5.1: The 5-color individual ink tank system.

5.2 Cleaning

Regularly clean the exterior of the printer with a soft, damp cloth. Refer to the detailed user guide for instructions on cleaning the print head, paper rollers, and other internal components to prevent print quality issues and paper jams.

6. TROUBLESHOOTING

If you encounter issues with your printer, consider the following common troubleshooting steps:

- **No Power:** Ensure the power cord is securely connected to both the printer and a working electrical outlet.
- **Printing Issues:**
 - Check ink levels and replace empty tanks.
 - Verify paper is loaded correctly and not jammed.
 - Ensure the printer is connected to your network or computer.
 - Perform a print head cleaning or alignment from the printer's maintenance menu.
- **Network Connectivity Problems:**
 - Restart your printer and Wi-Fi router.
 - Confirm the correct Wi-Fi password is entered.
 - Ensure the printer is within range of your Wi-Fi router.
- **Error Messages:** Consult the printer's LCD screen for specific error codes and refer to the comprehensive user guide for detailed solutions.

For more in-depth troubleshooting, please refer to the official Canon PIXMA TR8620a User Guide available online.

7. SPECIFICATIONS

Key technical specifications for the Canon PIXMA TR8620a All-in-One Printer:

Feature	Specification
Product Dimensions	13.8"D x 17.3"W x 7.5"H

Item Weight	17.4 pounds
Printing Technology	Inkjet
Functions	Print, Copy, Scan, Fax
Max Print Speed (Black)	15 ipm
Max Print Speed (Color)	10 ipm
Max Print Resolution	4800 x 1200 dpi
Paper Capacity	200 sheets (100 Cassette, 100 Rear Feed)
Auto Document Feeder (ADF)	20 sheets
Display	4.3" Color LCD Touchscreen
Connectivity	Wireless (Wi-Fi), USB
Special Features	Auto 2-Sided Printing, Micro SD Slot, Works with Alexa



Smart reorders with Alexa

Opt in to smart reorders to automatically replenish your favorite products before you run out.

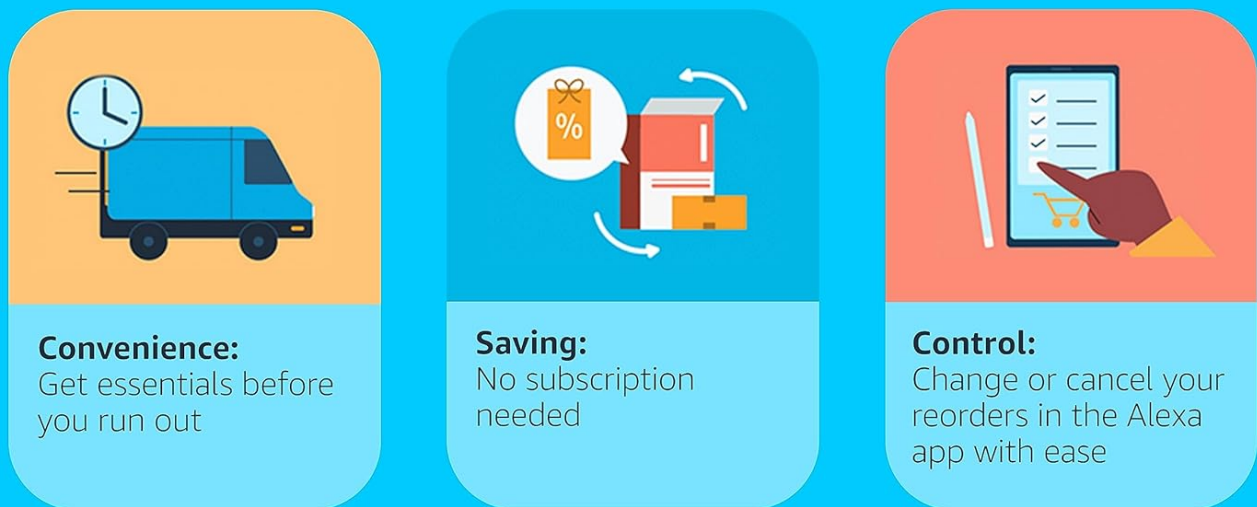


Figure 7.1: Printer dimensions for space planning.

8. WARRANTY AND SUPPORT

The Canon PIXMA TR8620a comes with a **1-Year Limited Warranty**. For warranty claims or technical assistance, please contact Canon customer support.

For detailed information, including a comprehensive user guide and software downloads, please visit the official Canon support website or access the PDF user guide directly:

- [Official User Guide \(PDF\)](#)
- [Canon USA Support Website](#)

