

VEVOR 6ft x 50ft 8 oz Geotextile Fabric

VEVOR Geotextile Landscape Fabric 6ft x 50ft 8 oz - Instruction Manual

Model: 6ft x 50ft 8 oz Geotextile Fabric

Brand: VEVOR

1. INTRODUCTION

The VEVOR Geotextile Landscape Fabric is a heavy-duty, non-woven polypropylene material designed for various landscaping and gardening applications. This fabric provides effective weed control, superior drainage, and soil stabilization, making it an essential tool for maintaining healthy outdoor spaces.

2. KEY FEATURES

- **Heavy Duty and High Strength Material:** Features 8oz tough and durable density, PP non-woven, 350N tensile strength, our weed barrier fabric features erosion-proof, damp-proof, tear-proof, and durable material compared with other woven ground covers.
- **Exclusive Permeability & Soil-Friendly:** The excellent permeability of this weed fabric barrier ensures better gravel filtration, water drainage, and air penetration to retain soil nutrients. This drainage design can filter gravel to work as a liner.
- **Non-Woven Needle Punched Fabric:** This heavy duty geotextile fabric is needle punched, keeping stable yet soft and flexible. This garden fabric can also be used for weed control to keep soil moisture by blocking the sunlight and reducing water evaporation.
- **Easy to Install and Setup:** This landscape fabric is super easy to carry, install or cut into single piece or exact dimensions, just roll down and put it in the preferred area.

NON WOVEN GEOTEXTILE FABRIC

Tough and tear-proof, not easy to break



High Density



High Strength



Long-Lasting Use



Image: VEVOR Geotextile Fabric highlighting high density, high strength, and long-lasting use.

EXCELLENT BREATHABILITY AND PERMEABILITY

No puddles buildup on the fabric's top



Control Weeds Growth

Maintain Soil Humidity

Enable Soil Breathing

Image: VEVOR Geotextile Fabric showcasing its breathability and permeability for weed control and soil health.

80Z HIGH DENSITY EROSION & CORROSION PROOF

Built to withstand long-term use



Image: Comparison illustrating the superior thickness and durability of VEVOR's 8oz geotextile fabric.

3. VERSATILE APPLICATIONS

This landscaping fabric is durable and high-quality, suitable for a wide range of uses:

- Greenhouse applications
- Ground & road stabilization
- General landscaping projects
- French drains
- Driveways or pathways
- Flower beds
- Bridge maintenance
- Gravel underlayment
- Construction projects
- Erosion control
- Farming and gardening applications

6×50FT VERSATILE USES

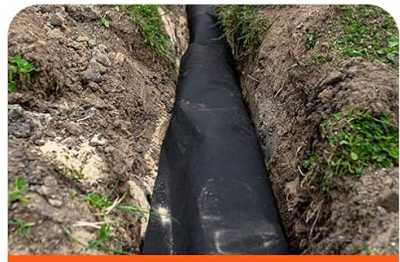
A must-have for agriculture, industry, etc



Road Maintenance



Bridge Repair



Ditch Installation



Wetland Restoration



Drainage Filtration



Greenhouse Insulation



Trees Preservation



Garden



Vegetable Patch

Image: Visual representation of the versatile uses of VEVOR Geotextile Fabric in different outdoor settings.

4. SETUP AND INSTALLATION

The VEVOR Geotextile Landscape Fabric is designed for easy installation. Follow these steps for optimal results:

1. **Prepare the Area:** Clear weeds and rake the soil level to create a smooth surface.
2. **Lay the Fabric:** Roll out the fabric over the prepared area. For plants, place the fabric around them or cut 'X' holes as needed.
3. **Secure the Fabric:** For best results, firmly fix the fabric with landscape staples (not included) to prevent shifting.
4. **Planting (if applicable):** Put your plants into the cut holes, ensuring they are properly positioned.

4-STEP EASY INSTALLATION

Easy to cut and lay, time and effort saved



1 Clear weeds and rake the soil level



2 Place around plants, or cut "X" holes



3 For better result, secure the fabric with staples (Not Included)



4 Put your plant into the hole

Image: Step-by-step visual guide for installing the VEVOR Geotextile Fabric.

Video: This video demonstrates the application of VEVOR Non-Woven Landscape Fabric for drainage and driveway use, showcasing its flexibility and ease of handling.

Video: An instructional video demonstrating the installation process of landscape fabric, including cutting and placement.

5. MAINTENANCE

Once installed, the VEVOR Geotextile Landscape Fabric requires minimal maintenance. Periodically check for any debris accumulation on the surface that might hinder water permeability. Ensure that the fabric remains securely anchored, especially after heavy winds or rain.

6. TROUBLESHOOTING

Slow Water Seepage

If you observe slow water seepage through the fabric, it may be due to incorrect installation or the type of fabric used for the specific application. Ensure the fabric is laid correctly with no obstructions. For drainage projects like French drains, it is crucial to use non-woven geotextile fabric, as woven fabrics may have insufficient penetration for optimal water flow.

Video: This video demonstrates the difference in water penetration between woven and non-woven fabrics, highlighting why non-woven is superior for drainage applications.

Video: This video illustrates the effective drainage capabilities of non-woven geotextile fabric, ideal for French drains and erosion control.

7. SPECIFICATIONS

Attribute	Value
Product Dimensions	600 x 72 x 0.01 inches (6ft x 50ft)
Item Weight	8 ounces
Manufacturer	VEVOR
Item Model Number	6ft x 50ft 8 oz Geotextile Fabric
Main Material	Non-Woven Fabric (PP)
Tensile Strength (Lengthwise)	160N
Tensile Strength (Widthwise)	170N
Material Weight	8.0OZ / sq.yd (271g/m²)



Image: Detailed specifications and dimensions of the VEVOR Geotextile Landscape Fabric.

8. WARRANTY AND SUPPORT

For technical support and e-warranty information, please visit the official VEVOR support website:

www.vevor.com/support