

ARGO ARGO POLIFEMO BEAR

Argo Polyphemo Bear Evaporative Cooler User Manual

Model: ARGO POLIFEMO BEAR

INTRODUCTION

This manual provides important information for the safe and efficient operation of your Argo Polyphemo Bear Evaporative Cooler. Please read this manual thoroughly before using the appliance and keep it for future reference.

The Argo Polyphemo Bear is designed to provide effective cooling and air purification through its evaporative cooling system. It features an intuitive LED control panel and a convenient remote control for ease of use.

PRODUCT OVERVIEW

The Argo Polyphemo Bear Evaporative Cooler is a compact and efficient appliance designed for cooling rooms or personal areas. It features a pure white, glossy finish and is equipped with multi-directional wheels for easy portability.



Figure 1: Front view of the Argo Polyphemo Bear Evaporative Cooler, showing the air outlet grille and water level indicator.



Figure 2: Top view of the control panel, featuring LED indicators and various function buttons.

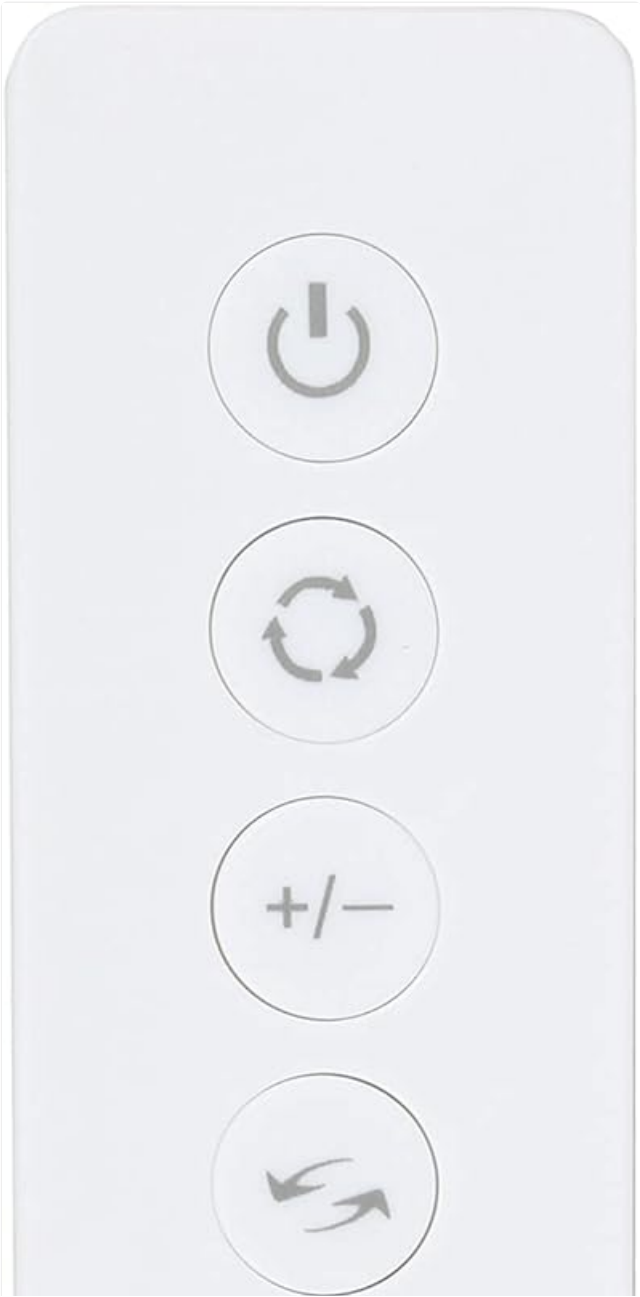




Figure 3: The infrared remote control, allowing convenient operation from a distance.

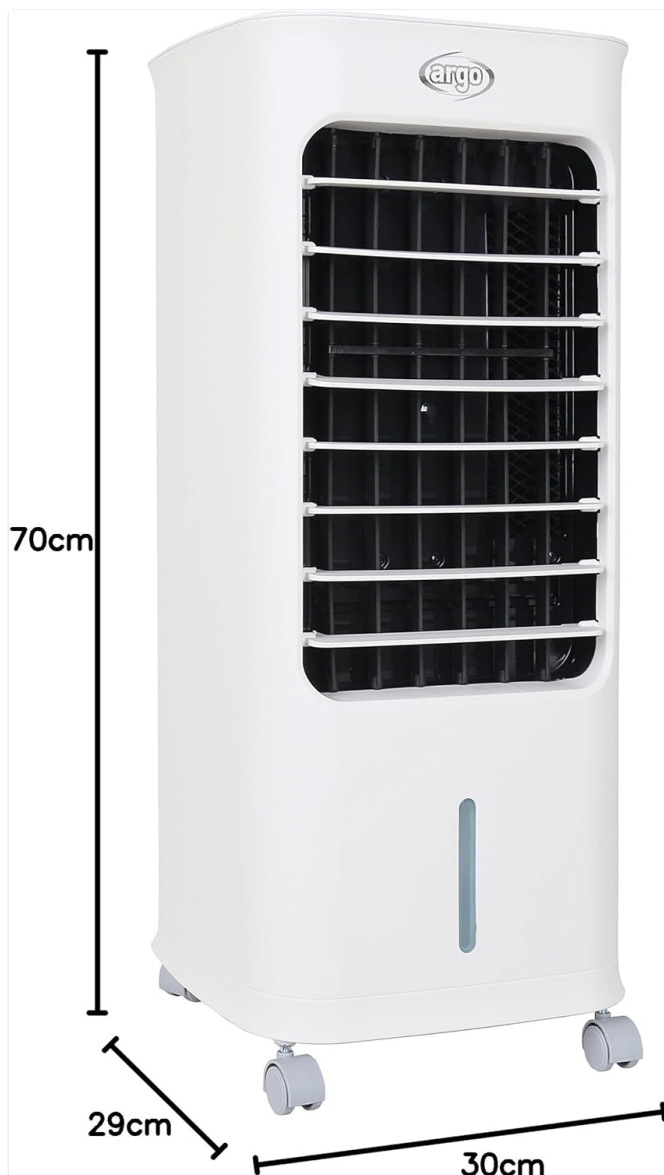


Figure 4: Product dimensions: 70cm height, 29cm depth, 30cm width.

SAFETY INSTRUCTIONS

Always follow basic safety precautions when using electrical appliances to reduce the risk of fire, electric shock, and injury to persons.

- Ensure the power supply voltage matches the appliance's rating.
- Do not immerse the appliance, cord, or plug in water or other liquids.
- Unplug from outlet when not in use, before putting on or taking off parts, and before cleaning.
- Do not operate any appliance with a damaged cord or plug, or after the appliance malfunctions or has been damaged in any manner.
- Keep the appliance out of reach of children.
- Do not block air inlets or outlets.
- Use only on a flat, stable surface.
- Do not use outdoors.

SETUP

1. **Unpacking:** Carefully remove the evaporative cooler from its packaging. Retain packaging for future storage or transport.
2. **Positioning:** Place the unit on a flat, stable surface. Ensure there is adequate space around the unit for proper airflow. The multi-directional wheels allow for easy movement.
3. **Filling the Water Tank:**
 - Locate the removable 5-liter water tank at the bottom of the unit.
 - Pull out the tank gently.
 - Fill the tank with clean tap water. Do not exceed the "MAX" fill line.
 - For enhanced cooling, you may add the included synthetic ice board (after freezing) into the water tank.
 - Carefully slide the water tank back into its position until it clicks securely.



Figure 5: View of the water tank compartment, showing the removable tank and pump mechanism.

4. **Power Connection:** Plug the power cord into a suitable electrical outlet.

OPERATING INSTRUCTIONS

The unit can be operated using the control panel on top of the unit or the infrared remote control.

Control Panel Functions:



Figure 6: Control panel layout with function icons.

- **Power Button** (⏻): Press to turn the unit ON or OFF.
- **Mode Button** (↺): Cycle through ventilation modes: Normal, Natural, Sleep.
- **Speed Button** (≡): Adjust fan speed: Low, Medium, High.
- **Timer Button** (⌚): Set the operating timer (1-7 hours). The unit will automatically turn off after the set time.
- **Oscillation Button** (↔): Activate or deactivate automatic vertical oscillation of the air flaps. Horizontal flaps can be adjusted manually.
- **Cooling/Humidification Button** (*): Activates the evaporative cooling function. Ensure water tank is filled.

Remote Control:

The remote control duplicates most functions of the control panel for convenient operation. Ensure the remote control is pointed towards the unit's receiver.





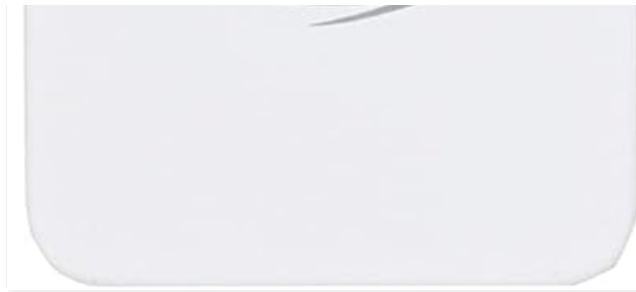


Figure 7: Remote control buttons.

- **Power Button:** Turns the unit ON/OFF.
- **Mode Button:** Cycles through Normal, Natural, Sleep modes.
- **Speed Buttons (+/-):** Adjusts fan speed up or down.
- **Oscillation Button:** Controls vertical oscillation.
- **Cooling Button:** Activates cooling function.

MAINTENANCE

Regular maintenance ensures optimal performance and extends the lifespan of your evaporative cooler. Always unplug the unit before performing any maintenance.

1. Water Tank Cleaning:

- The 5-liter water tank is easily removable for cleaning.
- Empty any remaining water and rinse the tank with clean water.
- For thorough cleaning, use a mild detergent and a soft brush. Rinse thoroughly to remove all detergent residue.
- Allow the tank to air dry completely before reinserting.

2. Filter Cleaning:

The unit features a double filter system: a dust filter and a honeycomb evaporation panel. Both are easily removable for cleaning.





Figure 8: Rear view with the filter panel visible.

- Locate the filter panel at the rear of the unit.
- Gently remove the dust filter and the honeycomb evaporation panel.
- Rinse both filters under running water to remove dust and debris. For stubborn dirt, use a soft brush.
- Allow the filters to air dry completely before reinserting them into the unit.
- Clean filters regularly, especially in dusty environments, to maintain air quality and cooling efficiency.

3. Exterior Cleaning: Wipe the exterior of the unit with a soft, damp cloth. Do not use abrasive cleaners or solvents.

TROUBLESHOOTING

Problem	Possible Cause	Solution
Unit does not turn on.	No power supply; Power button not pressed.	Check power cord connection; Ensure outlet is functional; Press the power button.
No cooling effect.	Water tank empty; Cooling function not activated; Filters are dirty.	
Weak airflow.	Air inlets/outlets blocked; Filters are dirty; Fan speed set too low.	Clear any obstructions; Clean filters; Increase fan speed.
Unusual noise.	Unit not on a flat surface; Water pump issue; Foreign object inside.	Place on a stable surface; Check water level; Inspect for foreign objects (unplug first). If problem persists, contact support.
Remote control not working.	Batteries dead or incorrectly inserted; Obstruction between remote and unit.	Replace batteries; Ensure correct polarity; Remove obstructions; Point remote directly at unit.

If the problem persists after trying these solutions, please contact customer support.

SPECIFICATIONS

Brand	ARGO
Model Number	ARGO POLIFEMO BEAR
Model Name	Polifemo Bear
Color	White
Product Dimensions (L x W x H)	29 x 30 x 70 cm
Item Weight	6.1 Kilograms
Voltage	230 Volt (2.3E+2 Volt)
Number of Speed Levels	3
Control Type	Remote Control, Control Panel
Tank Capacity	5 Liters
Mounting Type	Floor Mount
Recommended Use	Cooling rooms or personal areas
Included Components	Product, User Manual, Warranty Card, Synthetic Ice Board

WARRANTY AND SUPPORT

Your Argo Polyphemo Bear Evaporative Cooler comes with a manufacturer's warranty. Please refer to the included warranty card for specific terms and conditions, including warranty period and coverage details.




For technical support, service, or questions regarding your product, please contact Argo customer service. Contact information can typically be found on the warranty card or the official Argo website.



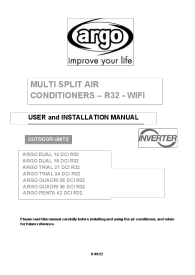
Please retain your proof of purchase for warranty claims.



© 2024 ARGO. All rights reserved.

Related Documents - ARGO POLIFEMO BEAR

	<p>Argo POLIFEMO BEAR Evaporative Air Cooler: Operating Instructions and Guide</p> <p>Comprehensive operating instructions, safety guidelines, maintenance tips, and troubleshooting for the Argo POLIFEMO BEAR evaporative air cooler. Learn how to use and care for your air cooler.</p>
	<p>Argo Polifemo Zeus Evaporative Air Cooler Operating Instructions</p> <p>Operating instructions for the Argo Polifemo Zeus evaporative air cooler. Covers safety, usage, modes, maintenance, and disposal. Features fan and humidifier functions.</p>
	<p>Argo Collezione Primavera/Estate 2018: Climatizzatori, Ventilatori e Deumidificatori</p> <p>Scopri la gamma completa di climatizzatori fissi e portatili, ventilatori, deumidificatori e raffrescatori evaporativi Argo per la collezione Primavera/Estate 2018. Soluzioni per il comfort domestico con tecnologia avanzata e design innovativo.</p>

	<p>Argo 2025 Spring/Summer Collection: Air Conditioners, Fans, Dehumidifiers & Air Purifiers</p> <p>Discover the Argo 2025 Spring/Summer collection, featuring advanced air conditioners, efficient fans, dehumidifiers, and air purifiers. Explore innovative technologies like DC Inverter, R32 refrigerant, and smart WiFi connectivity for optimal home comfort.</p>
	<p>Manual de Usuario Enfriador Evaporativo Argo Polifemo Zeus</p> <p>Instrucciones detalladas de uso, seguridad, mantenimiento y solución de problemas para el enfriador evaporativo Argo Polifemo Zeus. Aprenda a operar su unidad para un ambiente más fresco.</p>
	<p>Argo Multi Split Air Conditioners R32 WiFi User and Installation Manual</p> <p>Comprehensive user and installation manual for Argo Multi Split Air Conditioners featuring R32 refrigerant and WiFi connectivity. Covers installation, operation, safety precautions, maintenance, and disposal for models like ARGO DUAL, TRIAL, QUADRI, and PENTA.</p>