



[Manuals.plus](#) /

> [SriHome](#) /

> SriHome 3MP FHD Security Camera SH039B/SP039 User Manual

## SriHome SH039B/SP039

# SriHome 3MP FHD Security Camera User Manual

Model: SH039B/SP039

## 1. INTRODUCTION

---

This manual provides detailed instructions for the installation, operation, and maintenance of your SriHome 3MP FHD Security Camera (Model SH039B/SP039). Please read this manual thoroughly before using the product to ensure proper functionality and safety. This camera offers 3MP Full HD resolution, color night vision, sound and light alarms, IP66 waterproofing, two-way audio, and local TF card storage.



Image 1: SriHome 3MP IP Camera highlighting key features like 3MP resolution, starlight lens, two-way audio, waterproof design, human detection, motion detection, ONVIF support, color night vision, MicroSD card slot, and H.265 compression.

## 2. PACKAGE CONTENTS

---

Verify that all items listed below are included in your package:

- SriHome IP Camera (x1)
- Power Adapter (x1)
- User Manual (x1)
- Mounting Screws (x1 set)
- Waterproof Plug (x1)

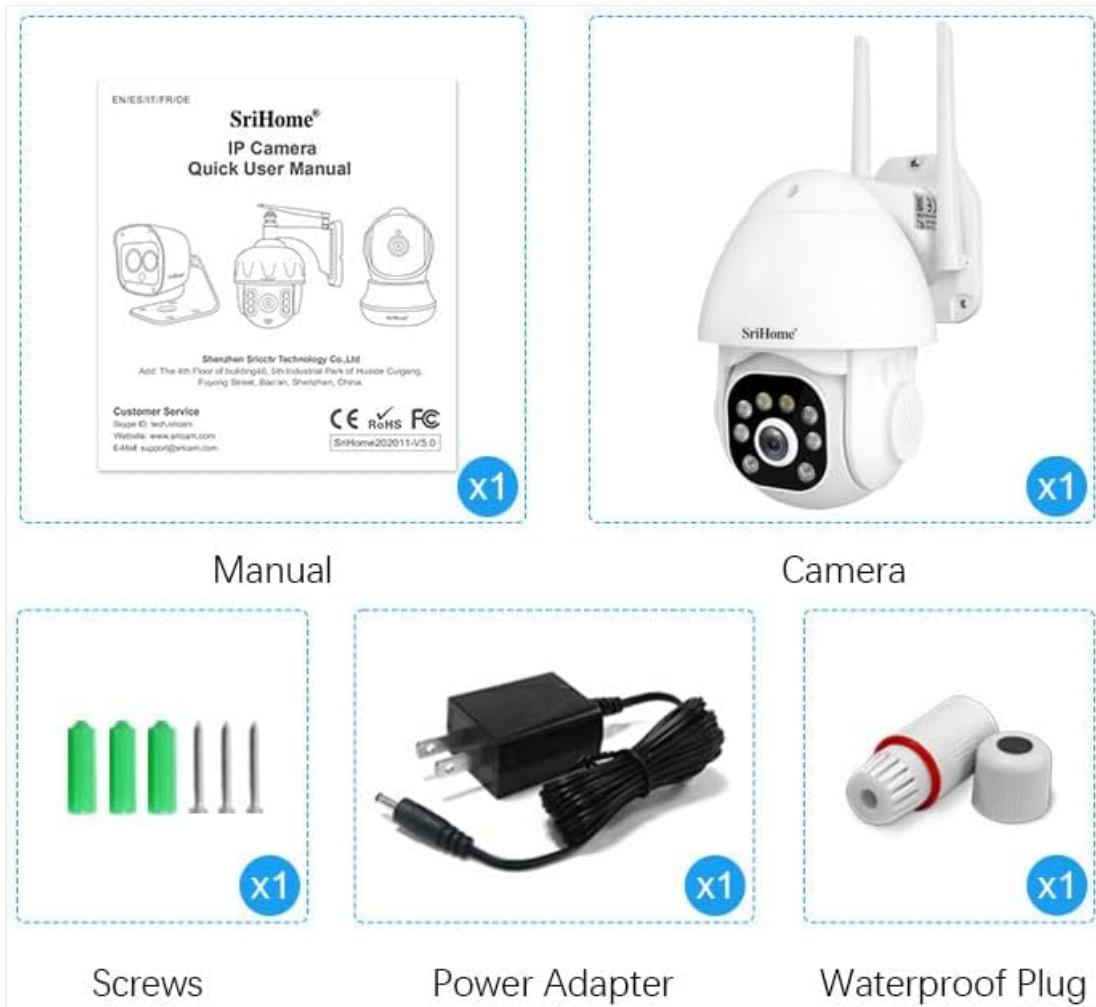


Image 2: Visual representation of the items included in the product package.

### 3. PRODUCT DIAGRAM

---

Familiarize yourself with the components of your SriHome security camera:



Image 3: Detailed diagram illustrating the various parts and ports of the SriHome IP Camera.

- **Antenna:** For Wi-Fi connectivity.
- **Speaker:** For two-way audio communication and audible alarms.
- **White Light:** Provides illumination for color night vision and acts as a warning light.
- **Lens:** The primary camera sensor.
- **Microphone:** For two-way audio communication.
- **Power Jack:** Connects to the power adapter.
- **LAN Port:** For wired network connection.
- **IR LED:** Infrared LEDs for black and white night vision.
- **Warning Lights:** Red and blue lights for active deterrence.
- **Reset Button:** Used to reset the camera to factory settings.
- **MicroSD Card Slot:** For local video storage.

## 4. SETUP

---

### 4.1 App Download

Download the SriHome app to your smartphone for camera control and monitoring.

**For Android:** Scan the QR code or visit [Google Play Store](#).

**For iOS:** Scan the QR code or visit [Apple App Store](#).



Image 4: Instructions for downloading the SriHome app and an overview of multi-user viewing and storage options.

## 4.2 Network Connection

The camera supports both wireless (Wi-Fi) and wired connections.

1. **QR Code Network:** Follow the in-app instructions to connect the camera to your Wi-Fi network by scanning a QR code generated by the app.
2. **AP Hotspot Network:** The camera can connect directly to your phone via its built-in AP hotspot without a router for initial setup or direct monitoring.
3. **Wired Network:** Connect an Ethernet cable to the LAN port for a stable wired connection.

## 4.3 MicroSD Card Installation

To enable local storage, install a MicroSD card (up to 128GB, not included) into the designated slot. Ensure the camera is powered off before inserting or removing the card.

## 4.4 Mounting

The camera is designed for wall mounting. Use the provided screws and waterproof plug to secure the camera in your desired outdoor location. Ensure the mounting surface is stable and can support the camera's weight.

## 5. OPERATING INSTRUCTIONS

### 5.1 Pan & Tilt Rotation

Control the camera's viewing angle remotely through the SriHome app. The camera offers 355° horizontal pan and 90° vertical tilt for comprehensive coverage.



Image 5: Remote control of camera pan and tilt functions via the SriHome app.

### 5.2 Night Vision Modes

The camera features three night vision modes:

- **Alarm Mode (Default):** Provides black and white night vision. When a human figure is detected, the white light automatically turns on, switching to full-color night vision.
- **White Light Mode:** The white light remains on, providing continuous full-color night vision. Brightness is adjustable.
- **Infrared Mode:** White light is off, and the camera uses IR LEDs for standard black and white night vision.

### 5.3 Human Detection & Tracking

Equipped with AI, the camera can distinguish human motion from other movements (e.g., pets, wind, leaves) to reduce false alarms. Upon human detection, the camera sends immediate notifications to your smartphone and can track the detected person.

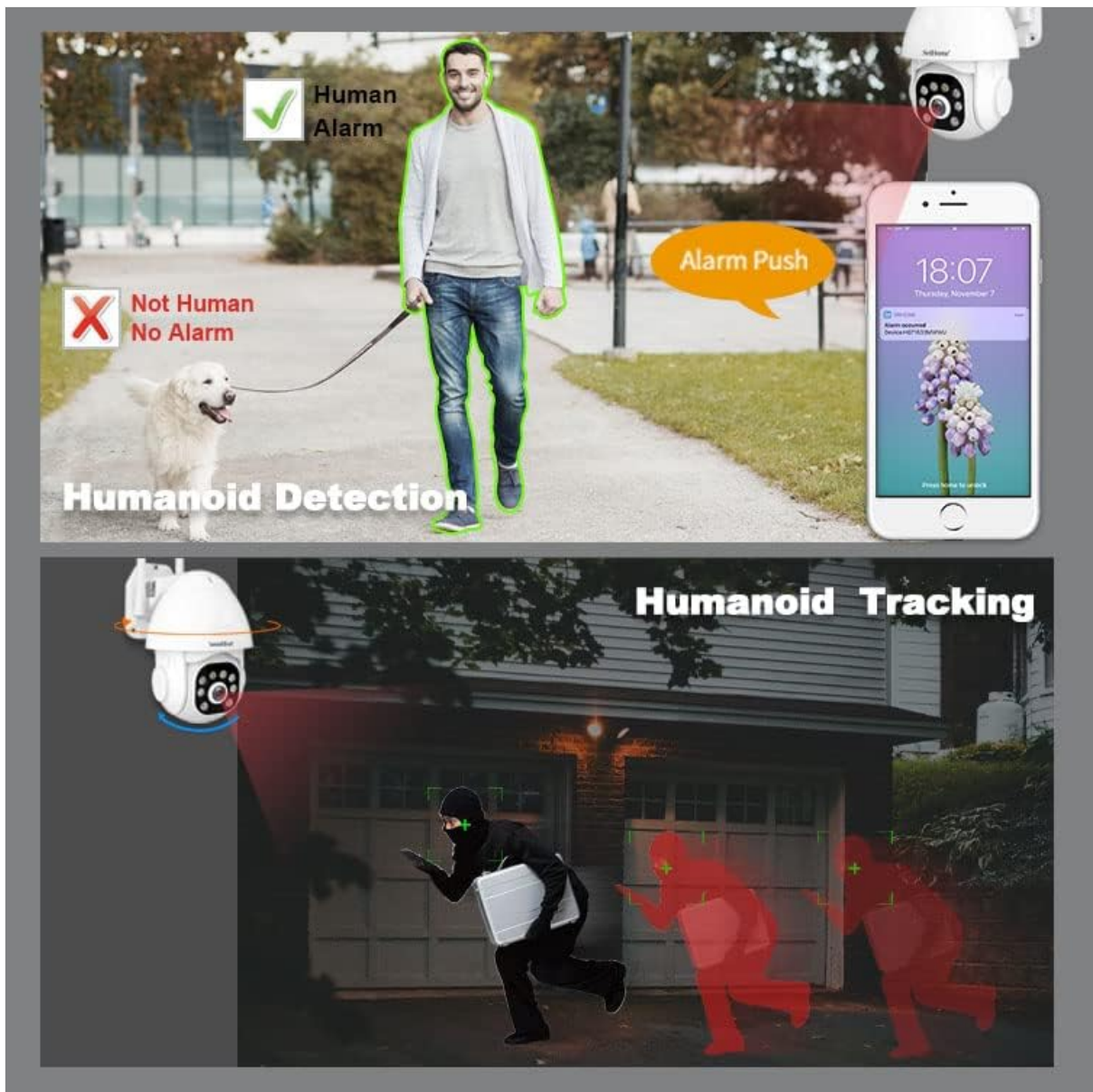


Image 6: Demonstration of the camera's ability to detect and track human figures.

## 5.4 Two-Way Audio

The integrated microphone and high-fidelity speaker allow for real-time two-way communication through the mobile app. You can listen to the camera's surroundings and speak through the camera.



Image 7: The camera's IP66 waterproof design and two-way audio communication capability.

## 5.5 Audible Alarm & Active Defense

When motion or a human is detected, the camera can actively deter intruders by emitting loud sound alarms and flashing red and blue warning lights.



Image 8: The camera activating its audible alarm and flashing lights to deter a person.

## 5.6 Multi-User Viewing

The camera supports up to 5 simultaneous viewers. The first user to set up the camera becomes the administrator. Other users require administrator authorization to access the camera feed.

## 5.7 Storage Options

Recordings can be stored in two ways:

- **MicroSD Card:** Local storage on a MicroSD card (up to 128GB).
- **NVR:** Connect the camera to a Network Video Recorder (NVR) for continuous recording and extended storage (NVR not included).

## 6. MAINTENANCE

---

The SriHome camera is designed for outdoor use with an IP66 waterproof rating, making it resistant to dust, heat, and cold. Regular cleaning of the lens with a soft, dry cloth is recommended to ensure clear image quality. Avoid using harsh chemicals.

## 7. TROUBLESHOOTING

- **Camera not connecting to Wi-Fi:** Ensure the camera is within range of your Wi-Fi router. Check Wi-Fi password accuracy. Try resetting the camera using the reset button.
- **No image or black screen:** Verify the power adapter is correctly connected and the camera is powered on. Check network connection.
- **False alarms:** Adjust the motion detection sensitivity settings in the app. Utilize the human detection feature to minimize alerts from non-human movements.
- **MicroSD card not recording:** Ensure the MicroSD card is correctly inserted and formatted within the app. Check if the card is full or corrupted.
- **Two-way audio issues:** Check microphone and speaker permissions for the SriHome app on your smartphone. Ensure network connection is stable.

## 8. SPECIFICATIONS

Feature	Specification
Model Number	SH039B/SP039
Resolution	3 Megapixels (2304x1296)
Connectivity	Wired (LAN) / Wireless (Wi-Fi)
Pan/Tilt Angle	Pan: 355°, Tilt: 90°
Night Vision	Color Night Vision, Infrared Night Vision (up to 15 meters)
Audio	Two-Way Audio (Built-in Microphone & Speaker)
Storage	MicroSD Card (up to 128GB), NVR
Weather Resistance	IP66 Waterproof
Special Features	Human Detection, Motion Tracking, Audible Alarm, Red/Blue Warning Lights
Power Source	12V DC Power Adapter
Dimensions	16 x 16 x 11 cm
Weight	420 Grams

## 9. WARRANTY AND SUPPORT

For warranty information and technical support, please refer to the contact details provided in the product packaging or visit the official SriHome website. Keep your purchase receipt for warranty claims.