

WUUK Y0410

WUUK Add-on Outdoor Camera (Model Y0410) Instruction Manual

This manual provides detailed instructions for the installation, operation, and maintenance of your WUUK Add-on Outdoor Camera.

1. PRODUCT OVERVIEW

The WUUK Add-on Outdoor Camera (Model Y0410) is a wireless, battery-powered security camera designed for both indoor and outdoor use. It features 2K HD video resolution, color night vision, and two-way audio. This camera requires a WUUK Homebase (sold separately) to function, which provides local storage and manages camera connectivity.



Image: WUUK Add-on Outdoor Camera and its packaging, highlighting 2K resolution and wireless features.

2. PACKAGE CONTENTS

Verify that all items are present in your package:

- WUUK Add-on Camera
- Mount Base
- Screw Pack (screws and wall anchors)

3. SETUP GUIDE

3.1. Charge the Camera

Before initial use, fully charge the WUUK Add-on Camera using a standard USB power adapter (not included). A full charge can provide up to 240 days of operation, depending on usage and environmental factors.

3.2. Download the WUUK App

Download the WUUK app from your device's app store (available for iOS and Android). Create an account or log in if you already have one.

3.3. Connect to WUUK Homebase

The Add-on Camera must be paired with a WUUK Homebase. Ensure your Homebase is powered on and connected to your home network via an Ethernet cable. Follow the in-app instructions to add a new camera and pair it with your Homebase. The app will guide you through the pairing process.

3.4. Mount the Camera

Select a suitable location for your camera. The camera is designed for both indoor and outdoor use and can be wall-mounted. Ensure the chosen location provides optimal viewing and signal strength to the Homebase.

1. Position the mount base against the desired surface.
2. Mark the screw holes.
3. Drill pilot holes if necessary.
4. Secure the mount base using the provided screws.
5. Attach the camera to the mount base and adjust the viewing angle as needed.

Wireless & Battery Powered



Larger Battery
Capacity



240-Day
Battery Life



Solar Panel
Addable



Image: A WUUK Add-on Outdoor Camera securely mounted on an exterior wall, demonstrating typical installation.



Image: A diagram illustrating the wireless signal coverage of the WUUK system around a house, indicating a range of up to 200 feet.

4. OPERATION

4.1. Video Quality and Viewing Angle

The camera captures video in 2K HD resolution, providing clear and detailed images. It features a 135-degree wide viewing angle to cover a broad area.

Full Signal Coverage

Up to 8 Add-on Cams

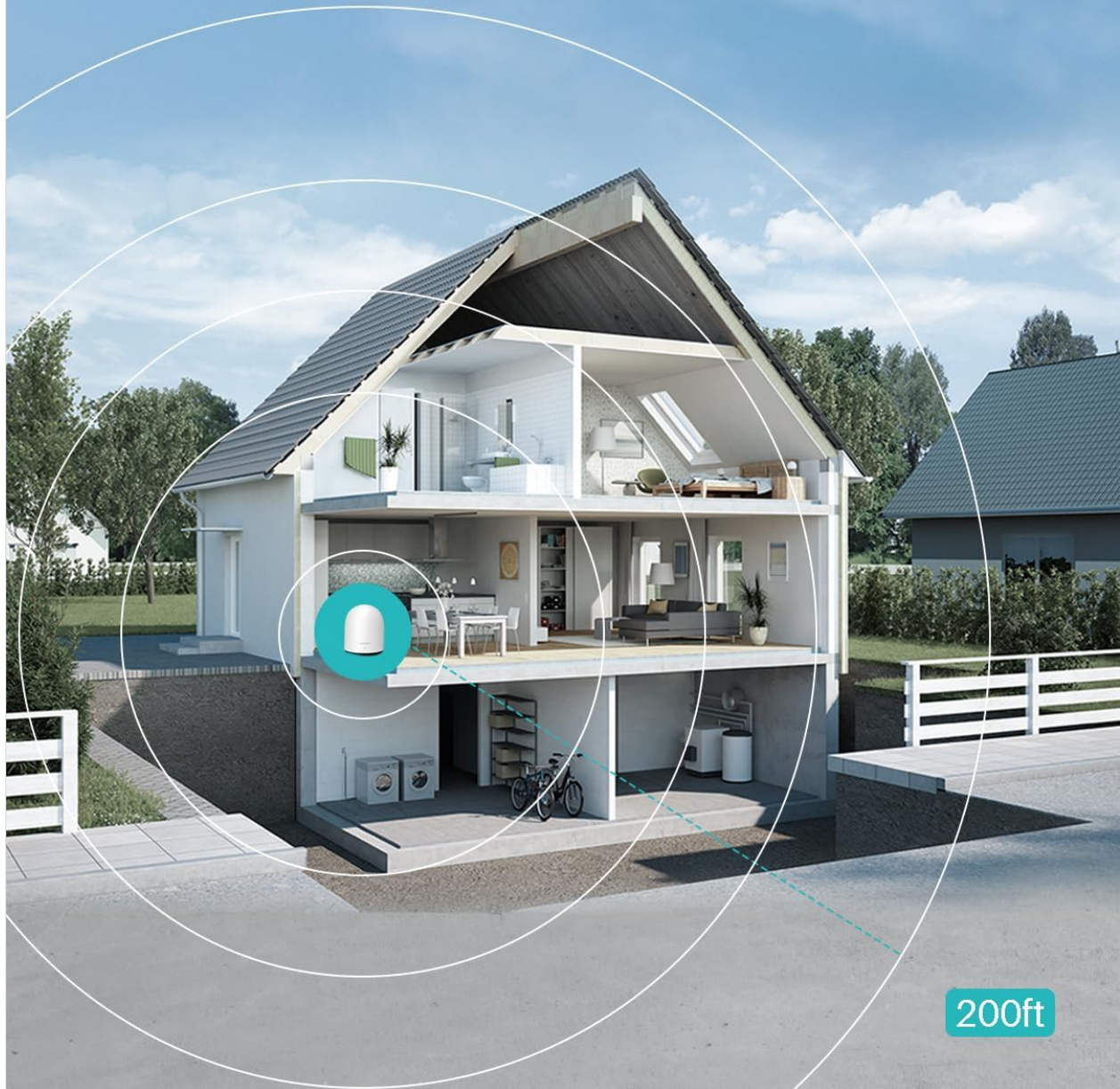


Image: A high-resolution image of a dog playing outdoors, illustrating the clarity of 2K QHD video capture.

4.2. Night Vision

The camera is equipped with color night vision and an integrated spotlight, allowing for clear visibility and detailed color images even in low-light conditions. The spotlight can be activated manually or automatically upon motion detection.

See the Events You Matter

Quickly access the event types, and see what happens instantly

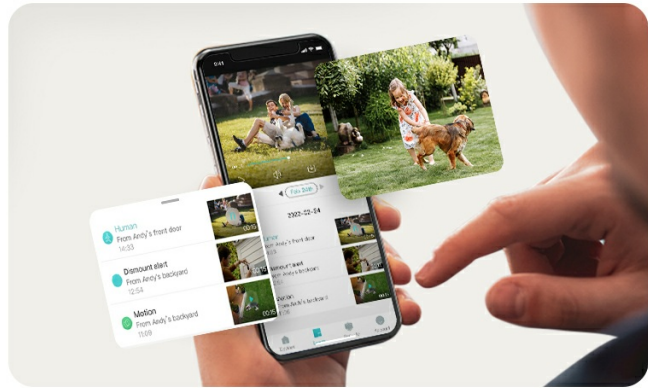


Image: A comparison showing the difference between standard night vision and color night vision with an activated spotlight, providing enhanced detail and color at night.

4.3. Battery Life and Charging

The camera features a 9600mAh high-capacity battery, offering up to 240 days of operation on a single charge. For continuous power, the camera is compatible with WUUK solar panels (sold separately).

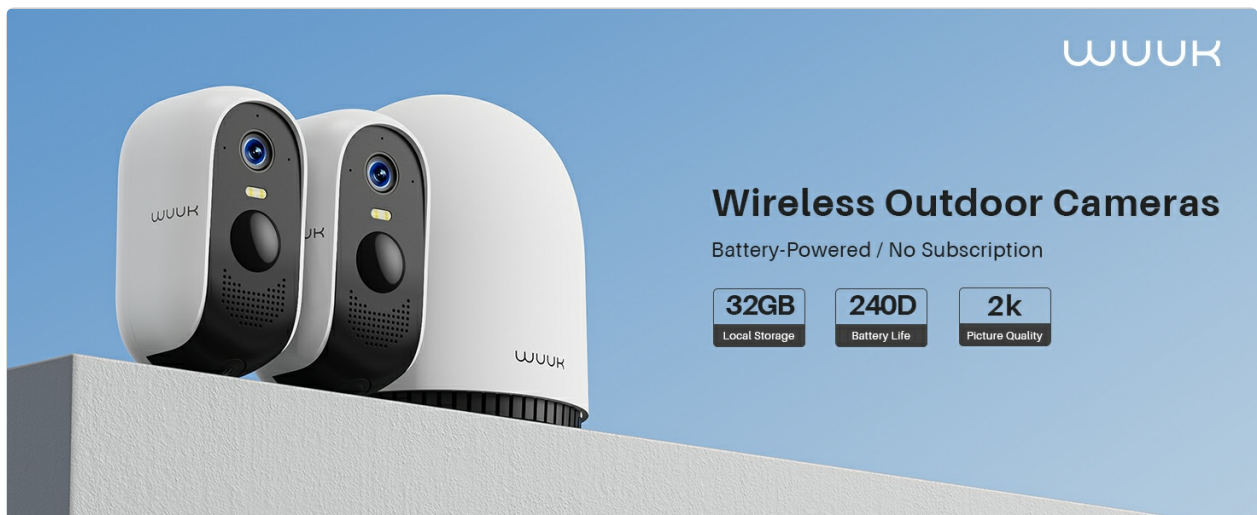


Image: A graphic highlighting the camera's 240-day battery life on a single charge, emphasizing its long-lasting performance.

4.4. Smart Home Integration

The WUUK Add-on Camera is compatible with Amazon Alexa, Google Home, and IFTTT. This allows for voice control and viewing camera feeds on compatible smart devices.

Color Night Vision

With advanced sensors and aperture, more light is captured even in the darkest environments, ensuring brighter and sharper details at night.



Image: A tablet displaying a live feed from a WUUK camera, with logos for Alexa and Google Home, indicating smart device compatibility.

4.5. Local Storage

Video recordings are stored locally on the WUUK Homebase's built-in 32GB storage, eliminating the need for monthly subscription fees for basic functionality.

4.6. Two-Way Audio

Utilize the two-way audio feature to communicate with individuals near the camera, such as delivery personnel or visitors, directly through the WUUK app.

Focus on Key Area - No More Hassle

Customize the detection area, and only pay attention to the important things on the key area

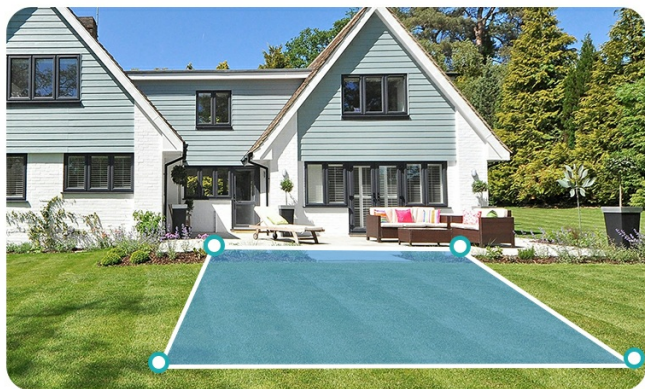


Image: A visual representation of the two-way talk feature, showing a person communicating with a delivery driver through the camera.

4.7. Motion Detection and Alerts

The camera features AI Humanoid Detection to accurately identify human movement and reduce false alarms. You can customize detection zones within the app to focus on specific areas of interest.



Image: A scene depicting a child playing with a soccer ball, with on-screen indicators showing the camera's AI Humanoid Detection in action.

Work with Smart Devices

Compatible with Amazon Alexa, Google Home, and IFTTT. Voice control your cams



Image: A backyard scene with an overlay showing how users can customize specific detection areas to minimize unwanted alerts.

4.8. Live View and Event Playback

Access live video feeds from your camera at any time through the WUUK app. Review recorded events and customize video recording durations as needed.

Not Missing Any Details

2K QHD, record events with perfect detail and color, help you know all events of home



Image: A screenshot from the WUUK app interface, illustrating the option to customize the duration of video recordings.

5. MAINTENANCE

5.1. Battery Charging

When the battery level is low, remove the camera from its mount and charge it using a standard USB power adapter. Reinstall the camera once fully charged.

5.2. Cleaning the Camera Lens

Periodically clean the camera lens with a soft, dry cloth to ensure optimal video clarity. Avoid using abrasive cleaners or solvents.

6. TROUBLESHOOTING

6.1. Camera Not Connecting to Homebase

- Ensure the Homebase is powered on and connected to the internet.
- Verify the camera is within range of the Homebase.
- Restart both the camera and the Homebase.
- Attempt to re-pair the camera through the WUUK app.

6.2. Short Battery Life

- Reduce the frequency of motion detection events.
- Adjust motion detection sensitivity.
- Limit live view access.
- Consider purchasing a WUUK solar panel for continuous charging.

6.3. Poor Video Quality

- Clean the camera lens.
- Ensure a strong wireless signal between the camera and Homebase.
- Check for obstructions blocking the camera's view.

6.4. False Motion Alerts

- Adjust motion detection sensitivity in the app.
- Define or refine custom detection zones to exclude areas with frequent, non-threatening movement (e.g., trees, busy roads).

7. SPECIFICATIONS

Model Number	Y0410
Indoor/Outdoor Usage	Indoor, Outdoor
Video Capture Resolution	1296p (2K HD)
Viewing Angle	135 Degrees
Power Source	Battery Powered (9600mAh)
Battery Life	Up to 240 days (variable)
Connectivity Technology	Wireless (via Homebase)
Local Storage	32GB (on Homebase)
Special Features	2-Way Audio, Built-In Light, Local Recording, Motion Sensor, Color Night Vision
Compatible Devices	Smartphone, Laptop (via app)
Dimensions (L x W x H)	2 x 2 x 3.49 inches
Item Weight	1.04 pounds
International Protection Rating	IP67

8. WARRANTY AND CUSTOMER SUPPORT

For any questions, technical assistance, or support inquiries regarding your WUUK Add-on Outdoor Camera, please contact WUUK customer service. Support can typically be reached via call or through the WUUK application. Specific warranty details may vary and are generally provided at the point of purchase or within the product packaging.