

Futaba UBT3368

Futaba UBT3368 T10PX APA Drop Down - Small Instruction Manual

1. INTRODUCTION

This manual provides essential instructions for the proper installation, operation, and maintenance of the Futaba UBT3368 T10PX APA Drop Down - Small. Please read this manual thoroughly before attempting to install or use the product to ensure correct functionality and to prevent damage.

The Futaba UBT3368 is an optional accessory designed to enhance the ergonomics of your Futaba T10PX transmitter by providing a "drop-down" steering wheel position. This small version is intended for specific user preferences.

2. PRODUCT OVERVIEW

The Futaba UBT3368 T10PX APA Drop Down - Small consists of components designed to modify the steering wheel position on compatible Futaba T10PX transmitters. It typically includes a base plate, a steering wheel adapter ring, and a curved ergonomic piece.



Figure 1: Components of the Futaba UBT3368 T10PX APA Drop Down - Small. The image displays the circular base plate with screw holes, a perforated ring adapter, and a separate curved ergonomic piece, all in black.

The base plate secures to the transmitter, the adapter ring provides the drop-down mechanism, and the curved piece offers a comfortable grip or support.

3. SETUP AND INSTALLATION

Installation of the APA Drop Down requires careful handling and basic tools. Refer to your Futaba T10PX transmitter's main instruction manual for specific disassembly and reassembly procedures related to the steering wheel assembly.

1. **Preparation:** Ensure the transmitter is powered off and disconnect any power sources. Gather necessary tools, typically a small Phillips head screwdriver.
2. **Remove Original Steering Wheel:** Carefully remove the existing steering wheel and any associated components from your T10PX transmitter as per its manual.
3. **Install Drop Down Base:** Attach the main circular base plate of the UBT3368 to the transmitter's steering wheel post using the provided screws or the original screws, ensuring it is securely fastened.
4. **Attach Adapter Ring:** Position the perforated adapter ring onto the base plate. This ring typically allows for angle adjustments. Secure it in place.
5. **Mount Steering Wheel:** Reattach your steering wheel to the newly installed drop-down assembly. Ensure all connections are firm and there is no excessive play.
6. **Final Check:** Gently test the steering wheel's movement to confirm smooth operation and secure attachment.

Note: Overtightening screws can damage components. Always use appropriate force.

4. OPERATING INSTRUCTIONS

Once installed, the Futaba UBT3368 T10PX APA Drop Down functions as an integrated part of your T10PX transmitter's steering mechanism. Its primary purpose is to reposition the steering wheel for improved ergonomic comfort and control.

- **Ergonomic Adjustment:** The drop-down design lowers the steering wheel's position, which can be beneficial for users seeking a more natural hand position during extended use.
- **Angle Customization:** The perforated adapter ring may allow for minor adjustments to the steering wheel's angle or offset, depending on the specific design and your transmitter's capabilities. Consult your T10PX manual for any related settings.
- **Steering Response:** The drop-down mechanism does not alter the electronic steering response of your transmitter. Any changes in feel are purely mechanical and ergonomic.

5. MAINTENANCE

The Futaba UBT3368 T10PX APA Drop Down requires minimal maintenance to ensure longevity and proper function.

- **Cleaning:** Wipe the surface with a soft, dry cloth. Avoid using harsh chemicals or abrasive cleaners, which can damage the finish.
- **Inspection:** Periodically check all screws and connections to ensure they remain tight. Loose components can affect performance and durability.
- **Storage:** Store the transmitter with the drop-down in a clean, dry environment, away from extreme temperatures and direct sunlight.

6. TROUBLESHOOTING

Most issues related to the drop-down are mechanical. If you encounter problems, consider the following:

- **Loose Steering Wheel:** If the steering wheel feels wobbly after installation, ensure all screws securing the drop-down and the steering wheel itself are properly tightened. Do not overtighten.
- **Difficulty in Installation:** Double-check that you are using the correct components for your Futaba T10PX transmitter. Refer to both this manual and your transmitter's manual.
- **Unusual Noise:** If you hear creaking or grinding, disassemble and reassemble the unit, ensuring no

foreign objects are present and all parts are correctly aligned.

For issues related to the electronic function of your transmitter, consult the Futaba T10PX instruction manual or contact Futaba support.

7. SPECIFICATIONS

Feature	Detail
Product Model	UBT3368
Compatibility	Futaba T10PX Transmitter
Product Dimensions	4.5 x 6.5 x 1 inches
Item Weight	0.8 ounces
Manufacturer	Futaba

8. WARRANTY INFORMATION

Warranty coverage for the Futaba UBT3368 T10PX APA Drop Down - Small is provided by the manufacturer, Futaba. Specific warranty terms, conditions, and duration may vary by region and retailer.

Please retain your proof of purchase. For detailed warranty information, including how to make a claim, refer to the documentation included with your product or visit the official Futaba website.


9. CUSTOMER SUPPORT

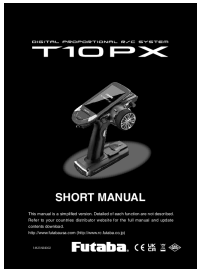
For technical assistance, parts inquiries, or further support regarding your Futaba UBT3368 T10PX APA Drop Down - Small, please contact Futaba customer service.

- **Manufacturer Website:** Visit the official Futaba website for support resources, FAQs, and contact information.
- **Retailer Support:** If purchased from a retailer, they may also offer support or facilitate warranty claims.

Always provide your product model number (UBT3368) and proof of purchase when seeking support.

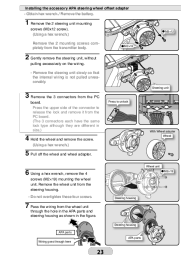
Related Documents - UBT3368

	<p>Futaba T10PX Wheel Spring Installation and Adjustment Guide</p> <p>Detailed instructions for installing and adjusting the Futaba T10PX Wheel Spring. Learn about the three available tension types and how to replace them for optimal steering performance. Includes part numbers and step-by-step guidance.</p>
---	--



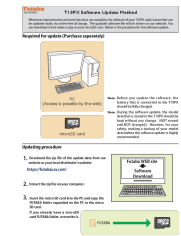
[Futaba T10PX Short Manual - Digital Proportional R/C System](#)

A concise guide to the Futaba T10PX, a digital proportional R/C system. This short manual covers essential information for operating the system, including safety precautions, features, and basic operations. For detailed information, refer to the full manual available on the Futaba website.



[Futaba T10PX 2.4GHz Radio Control System User Manual](#)

Comprehensive user manual for the Futaba T10PX 2.4GHz radio control system, detailing installation, setup, and operation of various features including steering wheel offset adapters, paddle switches, and receiver linking.



[Futaba T10PX Software Update Guide and Feature Enhancements](#)

Comprehensive guide for updating Futaba T10PX radio transmitter software, covering firmware versions 2.0 and 2.1. Includes step-by-step update procedures, troubleshooting, UR mode setup, receiver compatibility, and new features.



[Futaba 9Z Unofficial Workshop Manual: Servicing, Upgrades, and Repair Guide](#)

Comprehensive unofficial workshop manual for the Futaba 9Z series RC transmitters, covering servicing, repair, maintenance, and upgrade procedures. Includes detailed instructions and troubleshooting for models like 9ZAP, 9ZHP, 9ZAW, and WC2.



[Futaba T10PX](#) [R/C](#)
Futaba T10PX R/C