

## ANNKE NCK800

# ANNKE NCK800 4K PoE Security Camera System User Manual

Model: NCK800 | Brand: ANNKE

## 1. INTRODUCTION

This manual provides detailed instructions for the installation, operation, and maintenance of your ANNKE NCK800 4K PoE Security Camera System. Please read this manual thoroughly before using the product to ensure proper setup and optimal performance.

### Key Features:

- **NightChroma 4K Color Night Vision:** Utilizes f/1.0 super aperture for bright, clear, and colorful night vision in low-light conditions.
- **4K Ultra HD at 20 fps:** Captures exceptionally clear 4K Ultra HD footage with a large 1/1.2" CMOS sensor.
- **130 dB True WDR & 3D DNR:** Enhances image clarity in challenging lighting by correcting dark/washed-out areas and reducing noise.
- **Human & Vehicle Detection:** Advanced algorithms reduce false alarms by accurately identifying human and vehicle movement.
- **IP67 Weatherproof & Metal Housing:** Durable design for reliable outdoor and indoor installation, resistant to vandalism and corrosion.

## 2. SYSTEM SETUP

This section guides you through the initial setup of your ANNKE NCK800 security system.

### 2.1 Package Contents

Verify that all components are present in your package:

- ANNKE 8-Channel NVR Recorder
- 8 x ANNKE 4K PoE Turret Cameras
- 4TB Hard Disk Drive (pre-installed in NVR)

- Power Adapter for NVR
- Ethernet Cables
- USB Mouse
- Mounting Screws and Plugs
- Quick Start Guide

## 2.2 Hardware Installation

1. **NVR Placement:** Position the NVR in a secure, well-ventilated area, away from direct sunlight and moisture. Ensure it is connected to a power source and a monitor (via HDMI or VGA) for initial configuration.
2. **Camera Mounting:** Select appropriate locations for your cameras, considering coverage area and power access. The cameras are IP67 weatherproof, suitable for both indoor and outdoor use. Securely mount each camera using the provided screws.
3. **PoE Connection:** Connect each camera to the NVR's PoE ports using Ethernet cables. The NVR will provide both power and data transmission to the cameras.
4. **Network Connection:** Connect the NVR to your router using an Ethernet cable for remote access and notifications.
5. **Power On:** Connect the NVR to a power outlet using the provided power adapter. The system will boot up automatically.



Figure 2.2.1: Overview of the ANNKE NCK800 4K PoE Security Camera System components.

## 2.3 Initial Configuration

Follow the on-screen prompts on the connected monitor to complete the initial setup wizard. This typically includes setting a password, configuring network settings, and formatting the hard drive if necessary.

## 3. OPERATING YOUR SYSTEM

This section details how to operate your ANNKE NCK800 system and utilize its advanced features.

### 3.1 Live View and Playback

- **Live View:** Access the live feed from all connected cameras via the NVR's monitor output or through the ANNKE mobile application/client software.
- **Playback:** Use the NVR interface or software to review recorded footage stored on the 4TB HDD. You can



search by date, time, and event type.

### 3.2 4K Ultra HD Video Quality

The NCK800 system records in 4K Ultra HD at 20 frames per second, providing highly detailed and clear video footage. The large 1/1.2" CMOS sensor enhances light capture for superior image quality.

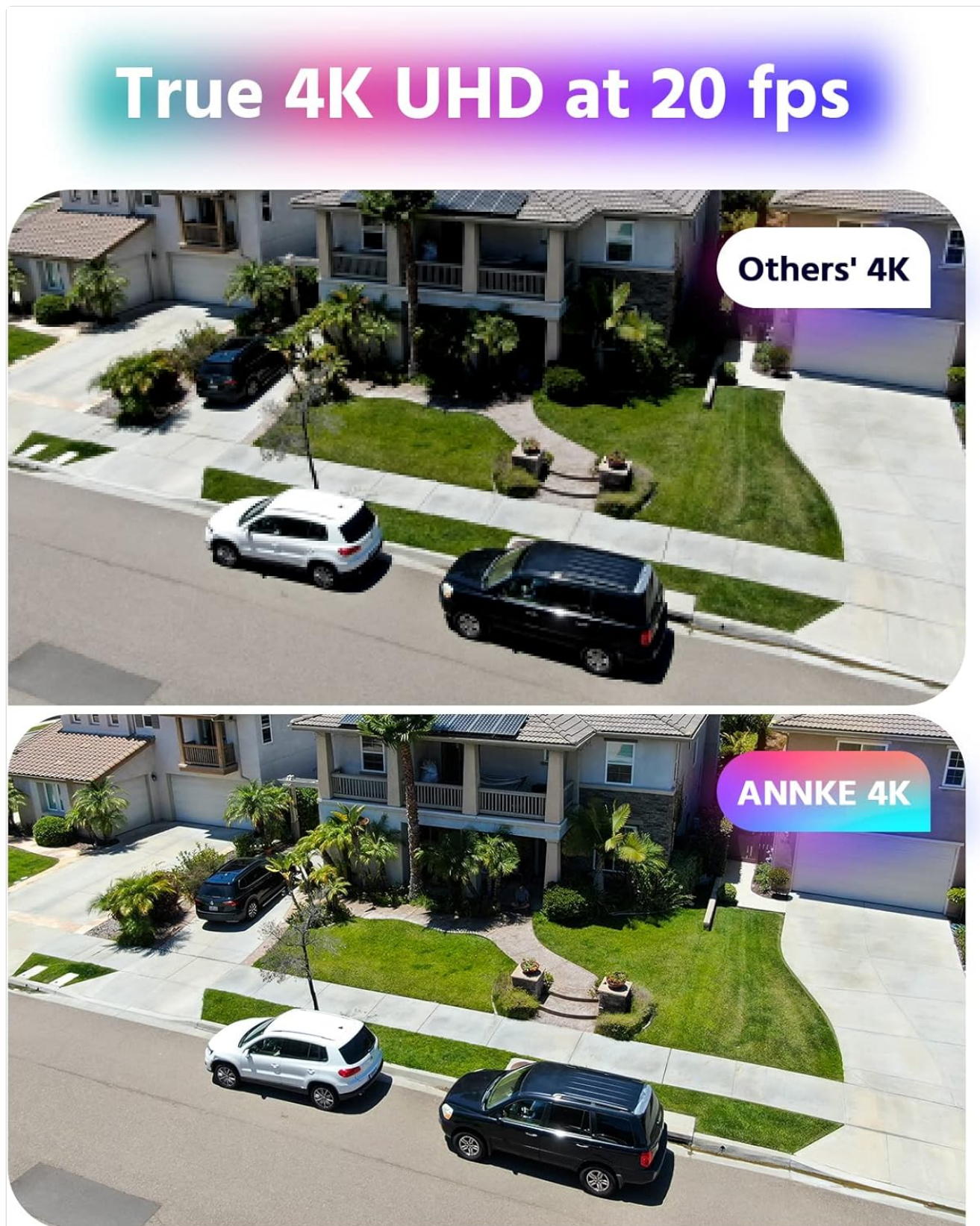


Figure 3.2.1: ANNKE 4K UHD provides superior detail compared to other 4K systems.

### 3.3 NightChroma 4K Color Night Vision

The NCK800 cameras feature NightChroma technology, providing full-color video even in extremely low-light



conditions. This is achieved through an f/1.0 super aperture and advanced image sensors, capturing significantly more light than standard cameras.



# Night 8MP UHD Acme Chroma Color Night Vision



**Others'**  
Night Vision



**ANNKE**  
**8MP**  
Color Night

Figure 3.3.1: NightChroma Color Night Vision provides detailed, colorful images in darkness.



## APERTURE

Less Lighting  
Blurry Images



## SUPER APERTURE

More Lighting  
Clearer Images



Figure 3.3.2: F1.0 Super Aperture captures more light for enhanced clarity.

### 3.4 Human & Vehicle Detection

Configure the AI human and vehicle detection settings to receive accurate alerts. This feature minimizes false alarms caused by environmental factors such as swaying trees or rain.

- **Configuration:** Access the NVR's menu or the ANNKE software to define detection zones and sensitivity levels for human and vehicle recognition.
- **Alerts:** When a human or vehicle is detected, the system can send instant app pushes and email alerts with snapshots to your registered devices.



# 130 dB True WDR & 3D DNR



Figure 3.4.1: Human and Vehicle Detection in action.

## 3.5 Wide Dynamic Range (WDR) and Digital Noise Reduction (DNR)

The 130 dB True WDR feature corrects image exposure in scenes with both very bright and very dark areas, ensuring details are visible across the entire frame. 3D DNR reduces visual noise, especially in low-light conditions, for clearer video.



# Human & Vehicle Detection

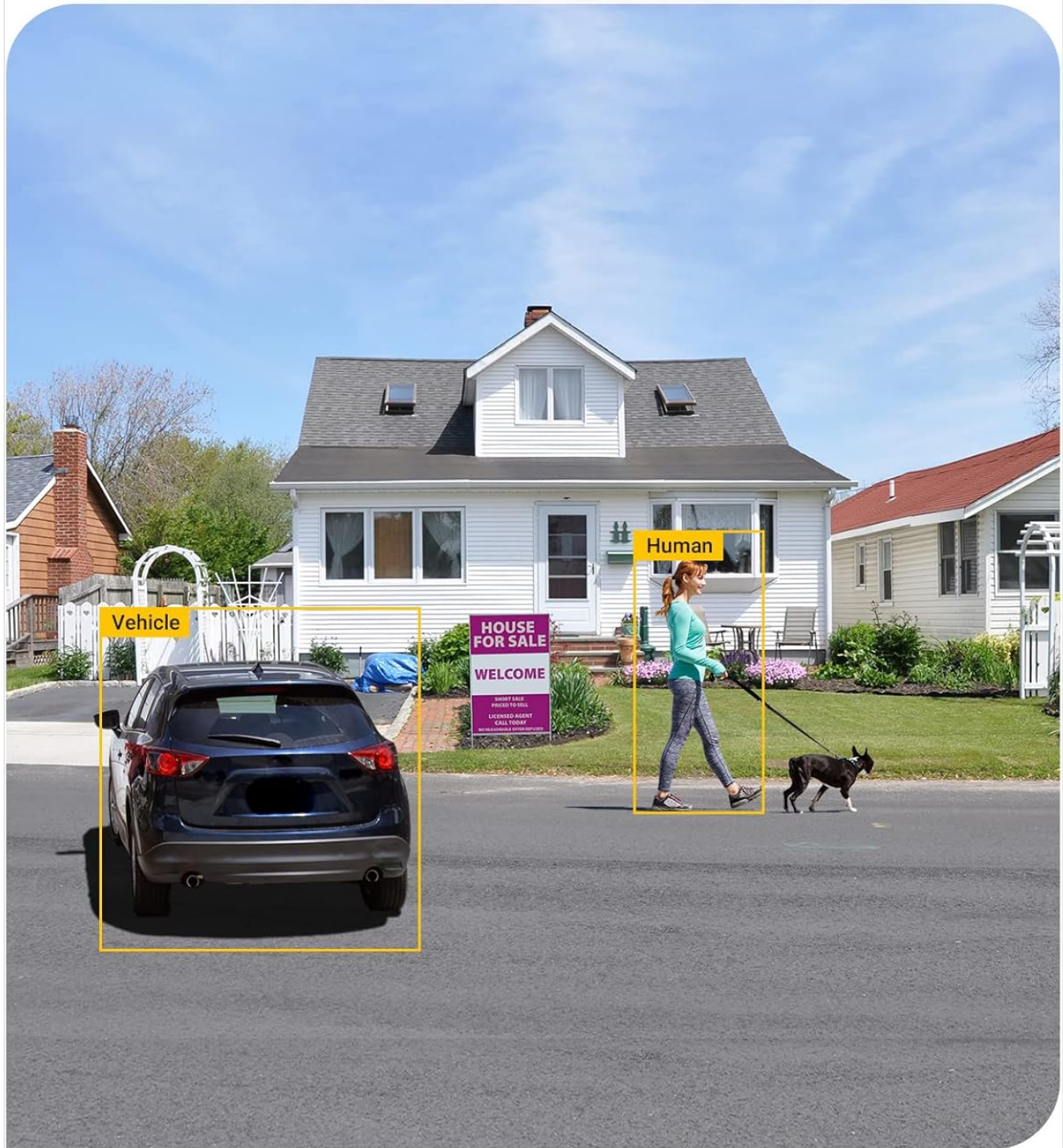


Figure 3.5.1: 130 dB True WDR improves image quality in high-contrast environments.

## 3.6 Field of View (FoV)

The cameras are equipped with a 2.8 mm lens, providing a wide 124° field of view, allowing for extensive coverage of your monitored area.



# 124° FoV with 2.8 mm Lens

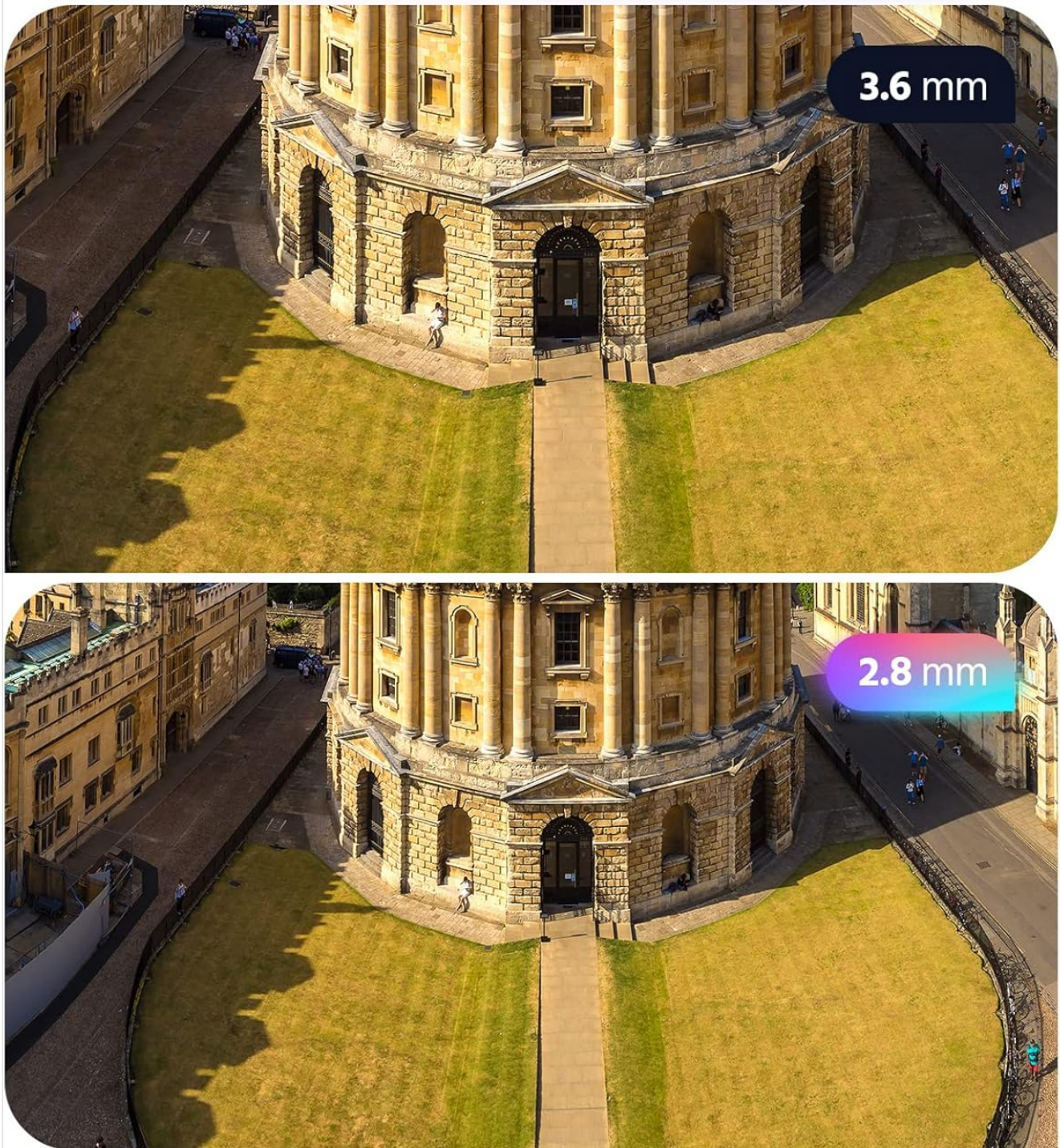


Figure 3.6.1: Wider field of view with a 2.8 mm lens.

## 3.7 H.265+ Video Coding

Your system utilizes H.265+ video compression technology, which significantly reduces file sizes compared to older H.264 standards, allowing for more storage capacity on the 4TB HDD and more efficient bandwidth usage for remote viewing.

## The Leading **H.265+** Coding

100%

**H.264**



25%

**H.265+**

Figure 3.7.1: H.265+ coding provides efficient video storage.

## 4. MAINTENANCE

Regular maintenance ensures the longevity and optimal performance of your security system.

- **Camera Cleaning:** Periodically clean the camera lenses with a soft, damp cloth to remove dust, dirt, or water



spots that may obstruct the view. Avoid abrasive cleaners.

- **Cable Inspection:** Regularly check all Ethernet cables for any signs of wear, damage, or loose connections. Ensure outdoor cables are properly secured and protected from environmental elements.
- **Firmware Updates:** Check the ANNKE official website or your NVR's system settings for available firmware updates. Keeping your system updated ensures access to the latest features and security enhancements.
- **NVR Ventilation:** Ensure the NVR's ventilation openings are clear of obstructions to prevent overheating.
- **Data Backup:** While the 4TB HDD provides ample storage, consider regularly backing up critical footage to an external storage device or cloud service if available.

---

## 5. TROUBLESHOOTING

This section addresses common issues you might encounter with your ANNKE NCK800 system.

- **No Image from Camera:**
  - Check the Ethernet cable connection between the camera and the NVR.
  - Ensure the NVR is powered on and functioning correctly.
  - Verify the camera is receiving power from the PoE port.
- **Poor Night Vision Quality:**
  - Clean the camera lens to remove any smudges or dirt.
  - Ensure there are no obstructions directly in front of the camera that could reflect infrared light (if applicable, though this system emphasizes color night vision).
  - Check for strong light sources near the camera that might interfere with night vision performance.
- **Frequent False Alarms:**
  - Adjust the sensitivity settings for human and vehicle detection in the NVR's configuration.
  - Refine the detection zones to exclude areas with frequent non-human/vehicle movement (e.g., swaying trees, busy roads).
- **Remote Access Not Working:**
  - Ensure the NVR is connected to your router and has internet access.
  - Verify network settings on the NVR and your router (e.g., port forwarding if required, though many systems use P2P for easier setup).
  - Check your mobile device's internet connection and ensure the ANNKE app is updated.

If you encounter issues not covered here, please refer to the ANNKE support resources mentioned in Section 7.

---

## 6. SPECIFICATIONS

Below are the technical specifications for the ANNKE NCK800 4K PoE Security Camera System.

Feature	Specification
---------	---------------

Feature	Specification
Brand	ANNKE
Model	NCK800
Connectivity Technology	Wired (PoE)
Video Capture Resolution	4K (2160p), 1080p
Special Features	Image Sensor, Night Vision, Vehicle Detection, Human Detection, 130 dB WDR, 3D DNR
Number of Channels	8
Memory Storage Capacity	4 TB HDD (included)
Power Source	Corded Electric
Compatible Devices	ANNKE Cameras
Low Light Technology	Night Vision (Full Color NightChroma)
Weatherproof Rating	IP67
Video Compression	H.265+

## 7. WARRANTY AND SUPPORT

ANNKE provides customer support and warranty services for its products. For specific warranty terms and conditions, please refer to the warranty card included with your product or visit the official ANNKE website.

### 7.1 Technical Support

If you require technical assistance, have questions about your system, or need troubleshooting beyond what is covered in this manual, please contact ANNKE customer support. Support contact information can typically be found on the ANNKE official website or in your product's packaging.

**Online Resources:** For additional guides, FAQs, and software downloads, visit the official ANNKE support page: [www.annke.com/support](#) (example link, actual link may vary).