

## TEEHO TE002

# TEEHO TE002 Fingerprint Door Lock

## USER MANUAL

### 1. Product Overview

The TEEHO TE002 Fingerprint Door Lock is an advanced keyless entry solution designed for enhanced home security and convenience. This electronic keypad deadbolt offers multiple access methods including biometric fingerprint identification, user-defined PIN codes, and traditional physical keys. It features smart functionalities such as auto-locking and one-touch locking, making it an ideal choice for front doors and various residential applications. The lock is built with durable aluminum and is designed for easy installation.





Image: The TEEHO TE002 Fingerprint Door Lock in Satin Nickel, showcasing the keypad, fingerprint sensor, and keyhole.

## 2. Installation Guide

The TEEHO TE002 lock is designed for straightforward installation, typically requiring only a screwdriver. No drilling is necessary for standard installations. Ensure your door meets the compatibility requirements before beginning.

### 2.1 Compatibility Requirements

- **Door Holes:** Compatible only with 2-1/8" (54mm) door holes.
- **Door Thickness:** Suitable for doors with a thickness between 1-3/8" and 2" (35mm to 50mm).
- **Backset:** Supports 2-3/8" or 2-3/4" (60mm or 70mm) backsets.

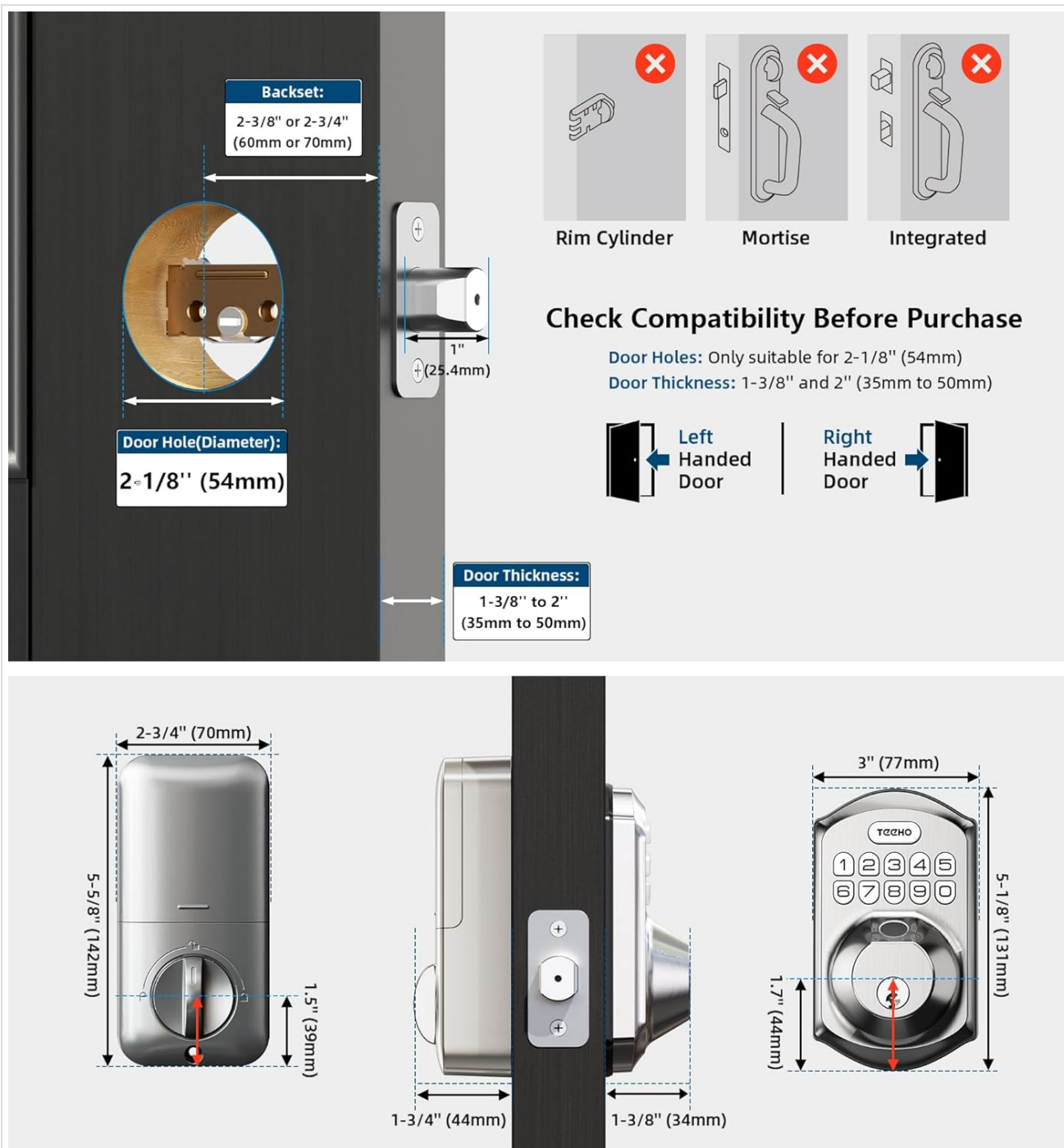


Image: Detailed diagram illustrating the required door hole diameter, door thickness, and backset measurements for proper installation of the TEEHO TE002 lock.

## 2.2 Basic Installation Steps (Summary)

1. Prepare the door: Ensure the door hole and thickness match the specifications.
2. Install the latch: Insert the latch into the door edge and secure it.
3. Install the exterior assembly: Place the exterior keypad assembly onto the door, aligning it with the latch.
4. Install the interior assembly: Attach the interior assembly, ensuring proper cable connection and alignment.
5. Secure the lock: Fasten all screws to secure both assemblies.
6. Install batteries: Insert 4 AA batteries (not included) into the battery compartment.
7. Test the lock: Perform initial tests to ensure all functions operate correctly.

For detailed step-by-step instructions, please refer to the complete installation manual provided with your product or available for download on the TEEHO website.

### 3. Operating Instructions

The TEEHO TE002 offers multiple convenient ways to access your property.

#### 3.1 Fingerprint Unlock

Unlock your door in approximately 1 second using the integrated biometric fingerprint identification technology. The lock recognizes your fingerprint in as little as 0.3 seconds. You can register up to 20 unique fingerprints for family members.

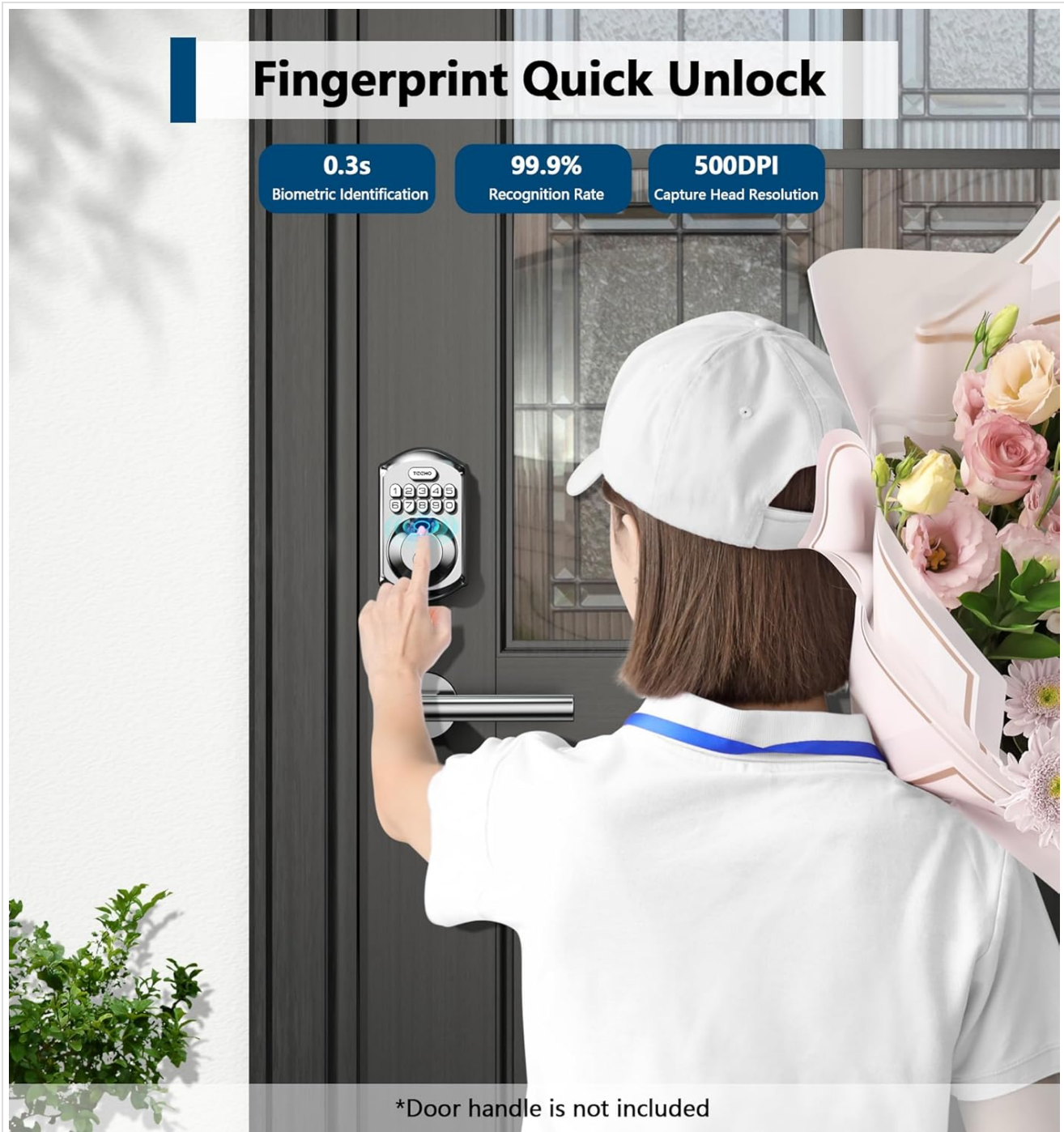


Image: A user placing their finger on the biometric sensor of the TEEHO TE002 lock for quick unlocking.

#### 3.2 Keypad Entry (PIN Codes)

The electronic keypad allows for secure access using PIN codes. You can create up to 20 user codes for regular access and generate one-time PIN codes for temporary guests or service providers. One-time codes are automatically deleted after a single use, enhancing security.





## Up to 21 PIN Codes

**20+1** Up to 21 different PIN Codes & 2 Physical keys Unlock



-  20 Fingerprints
-  20 User Codes
-  One-time Pin Code
-  2 Physical keys

**\*Door handle is not included**

Image: Visual representation of the various access methods available, including 20 fingerprints, 20 user codes, one-time PIN codes, and physical keys.



## One-Time Password

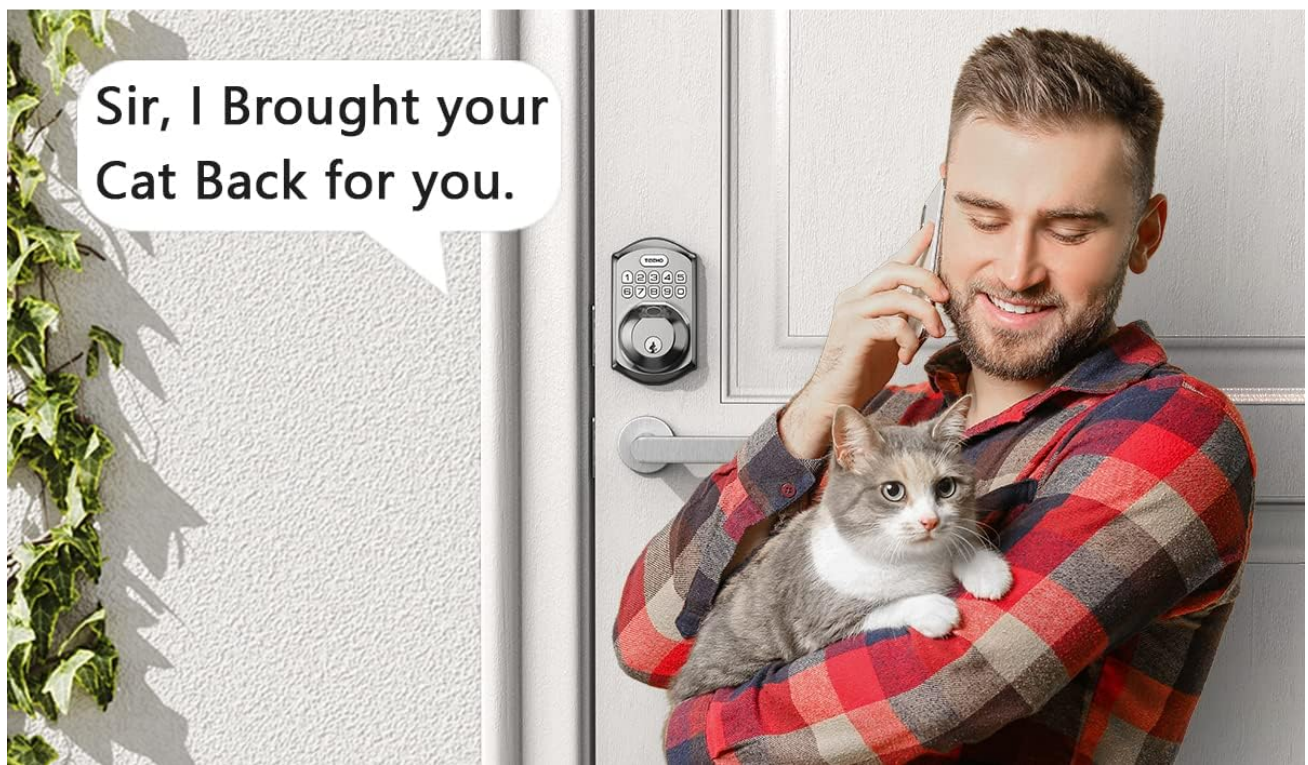


Image: A person receiving a one-time password via text message to grant temporary access to another individual.

### 3.3 Auto-Lock and One-Touch Locking

- **Auto-Lock:** The lock can be configured to automatically lock after a set period, typically between 10-99 seconds, ensuring your door is always secured after entry or exit.
- **One-Touch Auto-Lock:** To manually engage the auto-lock feature instantly, simply press and hold any key on the keypad for 2 seconds.



# Auto-lock & One-touch Locking

10-99 Seconds Auto Lock & 2 Seconds One-touch Lock



\*Door handle is not included

Image: A woman demonstrating the one-touch auto-lock feature by pressing a button on the keypad, with an arrow indicating automatic locking.

## 3.4 Anti-Peeping Password

To prevent others from guessing your code, you can enter random digits before or after your actual PIN code. As long as the correct sequence of your PIN code is embedded within the longer sequence, the lock will unlock.

## 4. Maintenance

### 4.1 Battery Information

The TEEHO TE002 lock operates on 4 AA batteries (not included). For optimal performance, it is recommended to use high-quality alkaline batteries. The lock features a low battery indicator to alert you when the batteries need to be replaced, ensuring continuous operation.



Image: Illustration of the lock's energy conservation features, including up to 6 months of battery life and a visible low battery indicator on the keypad.

## 4.2 General Care

- Clean the lock surface with a soft, damp cloth. Avoid abrasive cleaners or solvents.
- Ensure the fingerprint sensor and keypad are free from dirt or debris for optimal performance.
- The lock has an IP54 waterproof rating, providing protection against dust and splashing water, suitable for indoor and outdoor use.

## 5. Troubleshooting

If you encounter issues with your TEEHO TE002 lock, consider the following general troubleshooting tips:

- **Lock not responding:** Check battery levels and replace if necessary. Ensure batteries are inserted correctly.
- **Fingerprint not recognized:** Ensure your finger is clean and dry. Try re-registering your fingerprint if issues persist.
- **Keypad not responding:** Verify that the keypad is clean. Re-enter the code carefully.
- **Auto-lock not engaging:** Check the auto-lock settings to ensure it is enabled and the delay time is configured as desired.
- **Lock mechanism issues:** Ensure the door frame and strike plate are properly aligned and not obstructing the deadbolt.

For more specific troubleshooting steps or persistent issues, please refer to the comprehensive troubleshooting section in the full user manual or contact TEEHO customer support.

## 6. Specifications

Feature	Detail
Brand	TEEHO
Model Number	TE002
Lock Type	Keypad/Fingerprint Deadbolt Lock



Feature	Detail
Special Features	Fingerprint unlock, Passcode One-time Access, Auto Lock, One-touch Anti-peeping Password, IP54 Waterproof
Material	Aluminum
Color	Satin Nickel
Item Dimensions (L x W x H)	5.12 x 2.95 x 1.3 inches
Item Weight	1 Pounds
Power Source	4 AA Batteries (not included)
Control Method	Touch (Keypad, Fingerprint)
Connectivity Protocol	Nonconnected
Recommended Uses	Indoor door lock, Outdoor door lock

## 7. Warranty and Support

TEEHO stands behind its products with comprehensive customer support and warranty coverage:

- **Warranty:** TEEHO offers a 1-year product support on all parts.
- **Customer Commitment:** Enjoy a 30-day customer commitment period.
- **Lifetime After-Sales Service:** TEEHO provides lifetime after-sales customer service.
- **Support Channels:** This includes online phone support from Monday to Friday, 9 AM to 5 PM PST, and 24/7 online email service.

For assistance, please visit the official TEEHO website or refer to the contact information provided in your product packaging.

Verification Number: 220107044GZU-VOC002

Applicant Name & Address:	SHENZHEN STARFIRE Technology Company CO., LTD 5th Floor, Block 5, Tonghua Information Port, No. 3, Songshangnan Kindong Road Songshangnan Community, Xixi Street, Nanhai District, Shenzhen, Guangdong, 518000, China
Product Description:	Smart Lock
Rating & Principle Characteristics:	Grade 3
Model/Type References:	TE002-AMB, TE002-QMB, TE002-ON
Brand Names:	Tesha

Specification(s)/Standard:	ANSI/BHMA A156.36-2020 Auxiliary Locks
Verification Issuing Office Name & Address:	Intertek Testing Services Shenzhen Ltd. Guangzhou Branch Room 4003 & 4203, No. 63, Punan Road, Huangpu District, Guangzhou, China

Date of Tests: 2022-05-05 ~ 2022-05-21

Test Report Number(s): Z300704402U-001 Dated 2022-04-08

Nelson zhu

Name: Nelson Zhu  
Position: Technical Supervisor  
Date: 29 July 2022

Test Verification of Conformity Verification Number: 220107044GZU-VOC002 On the basis of the tests u ... ng, 518000, China Smart Lock Ratings Principle Characteristics: Models/Type References: Grade 3 **TE002**-MB, **TE002**-ORB, **TE002**-SN Brand Names: Teeho Specification s /Standards: ANSI/BHMA A156.36-2... lang:en **score:37** filesize: 201.83 K page\_count: 1 document date: 2022-07-29