

## Safer SH110

# Safer Home Indoor Multi-Insect Killer Spray SH110

## USER INSTRUCTION MANUAL

Brand: Safer | Model: SH110

### 1. Introduction

This manual provides comprehensive instructions for the safe and effective use of the Safer Home Indoor Multi-Insect Killer Spray SH110. This ready-to-use spray is formulated to control various common household insects.

### 2. Important Safety Information

Always read and follow all label directions and precautions before use. Keep out of reach of children. This product is safe for use around children and pets when used as directed. Do not ingest. In case of contact with eyes, flush with water for at least 15 minutes. If irritation occurs, seek medical attention.

### 3. Product Features

- **Effective Insect Control:** Kills ants, flies, roaches, spiders, silverfish, fleas, and other common household insects.
- **Fast-Acting Formula:** Achieves 100% kill rate for ants, flies, and roaches within 3 minutes upon contact.
- **Natural Ingredients:** Made with a blend of natural oils, including cottonseed oil and clove oil.
- **No Harsh Chemicals:** Contains no harsh chemicals, making it suitable for use around children and pets when used as directed.
- **No Residue:** Dries without leaving any residue, eliminating the need for cleanup.
- **Versatile Application:** Suitable for use in various indoor areas such as kitchens, pantries, bathrooms, living rooms, and basements.
- **Ready-to-Use:** Convenient spray bottle for immediate application.

## 4. Ingredients

---

The Safer Home Indoor Multi-Insect Killer Spray SH110 is formulated with the following ingredients:

- **Active Ingredients:** Clove Oil (0.05%), Cottonseed Oil (0.05%)
- **Inert Ingredients:** 99.90%

## 5. Setup

---

The Safer Home Indoor Multi-Insect Killer Spray SH110 comes ready-to-use. No assembly or mixing is required. Simply ensure the nozzle is set to the desired spray pattern before application.

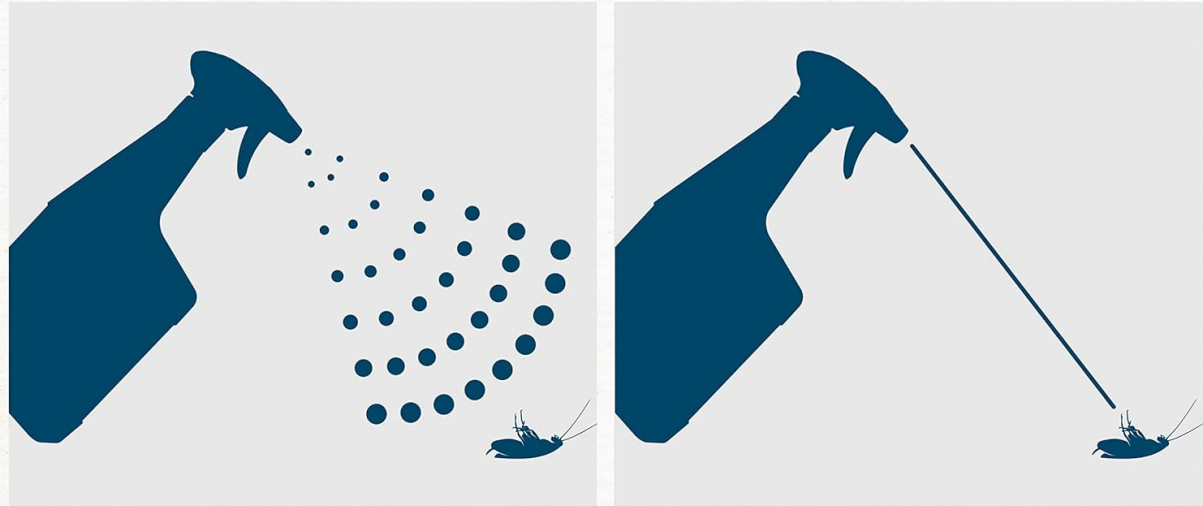
## 6. Operating Instructions

---

Follow these steps for effective application:

1. **Prepare the Nozzle:** Rotate the nozzle to select either the 'spray' setting for general application or the 'stream' setting for crack-and-crevice treatment.
2. **General Application:** For broad coverage, hold the bottle 8-12 inches from the target area and spray directly onto pests until wet. Avoid spraying to the point of runoff.
3. **Crack-and-Crevice Treatment:** For targeted application in tight spaces, use the 'stream' setting. Spray directly into cracks, crevices, and other hidden areas where pests may be present.
4. **Observe Results:** The contact-kill formula works quickly. Pests should be affected within minutes.
5. **No Cleanup Required:** The spray dries without leaving residue, so no wiping is necessary.

# Don't Miss Your Target Broad or Precision Application



**Spray**

**Stream**

**Safer**  
BRAND Home

Figure 1: Nozzle settings for broad spray or targeted stream application.

# Kills By Contact

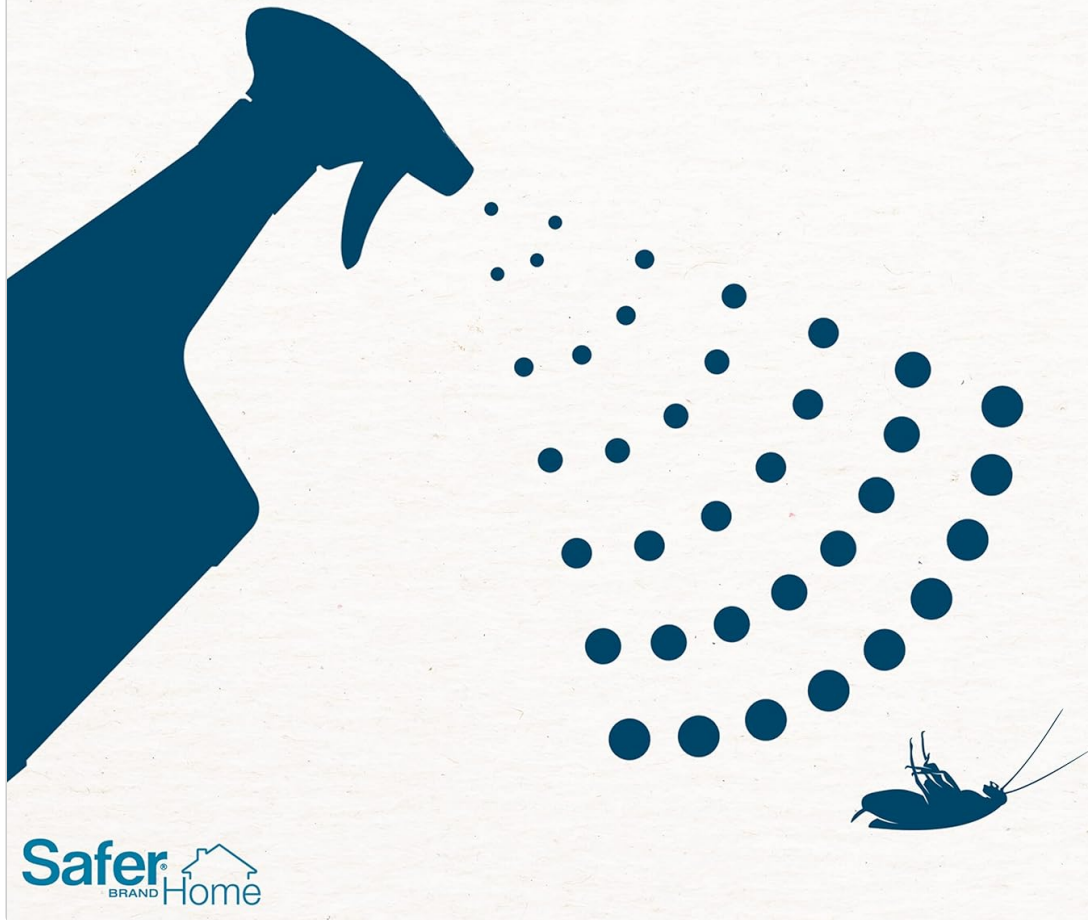
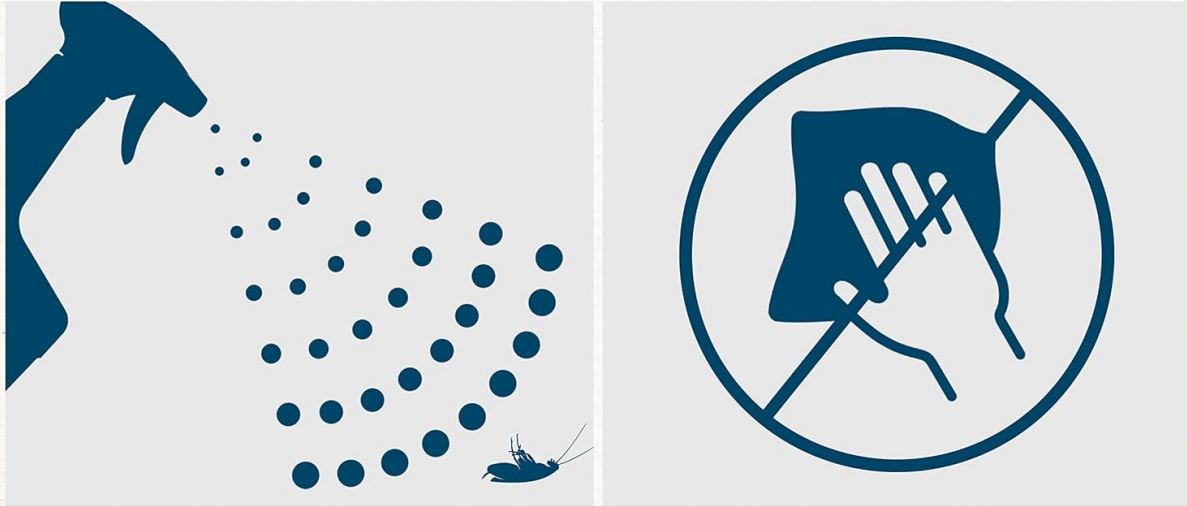


Figure 2: The spray works by contact to eliminate insects.

# No Residue Solution

## There's no need to wipe, dries without cleanup



**Safer**  
BRAND Home

Figure 3: The formula dries without leaving any residue, eliminating the need for cleanup.

Video 1: Official product overview demonstrating the Safer Home Indoor Ant, Fly, Roach, Spider & Flea Killer.

## 7. Storage and Disposal

Store the product in a cool, dry place away from direct sunlight. Avoid excessive heat or freezing. To dispose of the container, rinse it and offer for recycling if available. Consult local regulations for proper disposal of pest control products.



Figure 4: Recycling information for the product bottle.

## 8. Troubleshooting

If you encounter persistent pest issues or the product does not perform as expected, ensure you have followed all application instructions carefully. For further assistance, please contact customer support.

## 9. Specifications

<b>Product Name</b>	Safer Home Indoor Multi-Insect Killer Spray
<b>Model Number</b>	SH110
<b>Brand</b>	Safer
<b>Item Volume</b>	24 Fluid Ounces
<b>Scent</b>	Clove
<b>Material Feature</b>	Natural

<b>Item Form</b>	Spray
<b>Product Dimensions</b>	2 x 4.5 x 11.63 inches
<b>Item Weight</b>	1.5 pounds
<b>Manufacturer</b>	Woodstream Corporation

## 10. Warranty and Support

---

For any questions, concerns, or support regarding your Safer Home Indoor Multi-Insect Killer Spray SH110, please contact Woodstream Corporation customer service. Refer to the product packaging for specific contact details or visit the official Safer brand website.