

Rowenta SF4630

Rowenta SF4630 Express Shine Hair Straightener User Manual

Model: SF4630 | Brand: Rowenta

[Introduction](#) [Safety Warnings](#) [Product Overview](#) [Setup](#) [Operation](#) [Maintenance](#)
[Troubleshooting](#) [Specifications](#) [Warranty & Support](#)

1. INTRODUCTION

The Rowenta SF4630 Express Shine Hair Straightener is designed to provide efficient hair styling with added benefits for hair health and shine. This appliance features ceramic plates infused with argan oil, combined with an ionic effect to reduce static and enhance shine. Its versatile 2-in-1 design allows for both straightening and curling, offering a range of styling options.

Key features include 8 temperature settings, a rapid 30-second heat-up time, and advanced overheat protection for safe and consistent performance. The floating plate system ensures optimal contact with hair for effective styling in a single pass.

CAPELLI BRILLANTI

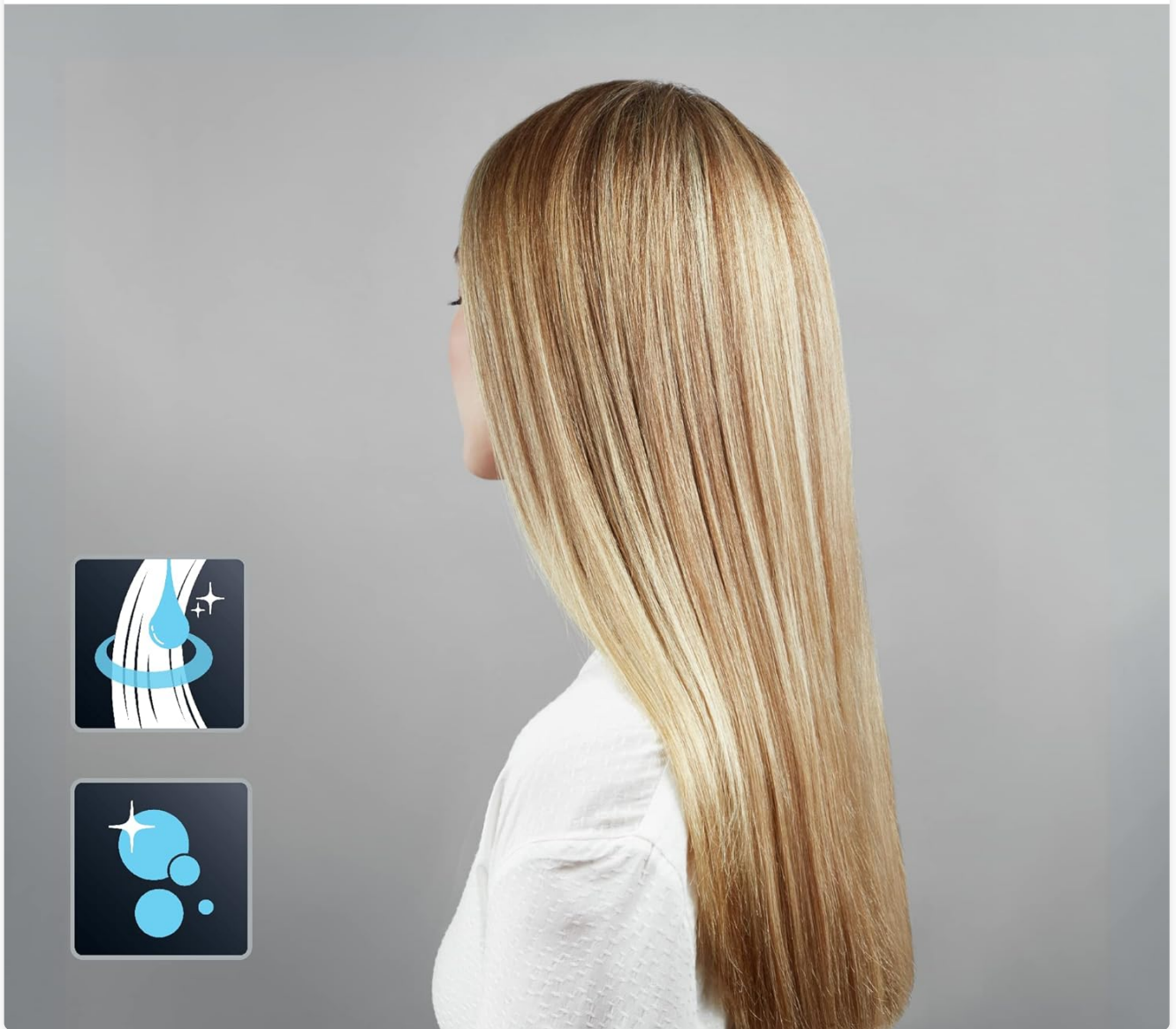


Image: Hair styled with the Rowenta Express Shine straightener, demonstrating smooth, shiny results.

2. SAFETY WARNINGS

Please read all safety instructions carefully before using the appliance. Failure to follow these instructions may result in electric shock, fire, or injury.

- Always ensure the appliance is unplugged when not in use, before cleaning, and before filling the argan oil infuser.
- Do not use this appliance near water, in a bathroom, or near a sink.
- Keep the appliance out of reach of children.
- Do not touch the hot plates during or immediately after use.
- Ensure the power cord is not twisted or damaged.
- The appliance features digital heat sensor technology to prevent overheating and maintain an optimal temperature. However, always monitor the appliance during use.
- If the supply cord is damaged, it must be replaced by the manufacturer, its service agent, or similarly qualified persons to avoid a hazard.
- This appliance is not intended for use by persons (including children) with reduced physical, sensory or mental

capabilities, or lack of experience and knowledge, unless they have been given supervision or instruction concerning use of the appliance by a person responsible for their safety.

3. PRODUCT OVERVIEW

The Rowenta SF4630 Express Shine Hair Straightener is designed for ease of use and effective styling. Familiarize yourself with its components:

1. **Ceramic Plates:** Advanced ceramic coating for smooth gliding and even heat distribution.
2. **Argan Oil Infuser:** Integrated system to infuse hair with argan oil during styling for enhanced shine.
3. **Temperature Control Buttons:** '+' and '-' buttons to adjust temperature settings.
4. **LCD Display:** Shows the current temperature setting.
5. **Ionic Function Button:** Activates the ionic effect to reduce static and frizz.
6. **Locking System:** For secure storage of the plates.
7. **360° Swivel Cord:** Provides flexibility and ease of movement during styling.



Image: The Rowenta SF4630 Express Shine Hair Straightener, showcasing its sleek black and gold design with the ceramic plates open.



Image: A top-down view of the straightener, highlighting the digital temperature display and control buttons for easy adjustment.

4. SETUP

Before using your Rowenta SF4630 Express Shine Hair Straightener for the first time, follow these steps:

1. **Unpack:** Carefully remove the appliance and all packaging materials.
2. **Clean Plates:** Gently wipe the ceramic plates with a damp, soft cloth to remove any dust or residue from manufacturing. Ensure the plates are completely dry before use.
3. **Fill Argan Oil Infuser:** Locate the argan oil infuser (refer to the product diagram if necessary). Fill it with a small amount of argan oil. Do not overfill. This step is optional but recommended for enhanced shine and hair protection.

4. **Plug In:** Connect the power cord to a suitable electrical outlet.

5. OPERATION

The Rowenta SF4630 Express Shine Hair Straightener offers versatile styling for both straight and curled hair.

5.1 Power On and Temperature Selection

1. Plug the appliance into an electrical outlet. The LCD display will illuminate.
2. Press the power button (if available, otherwise it heats up automatically upon plugging in).
3. Use the '+' and '-' buttons to select your desired temperature. The appliance offers 8 settings ranging from 140 °C to 210 °C.
 - **Care Setting (170 °C):** Recommended for healthy and protected hair.
 - **Booster Mode (210 °C):** For intensive straightening, suitable for thicker or more resistant hair.
4. Allow approximately 30 seconds for the straightener to reach the selected temperature. The display will indicate when it is ready.

5.2 Straightening Hair

1. Ensure your hair is clean, dry, and detangled.
2. Divide your hair into small, manageable sections.
3. Take one section of hair and place it between the ceramic plates, close to the roots.
4. Gently close the plates and glide the straightener slowly and evenly down the hair section, from roots to ends. The floating plate system ensures constant contact.
5. Repeat for all sections until desired straightness is achieved.
6. Activate the ionic function (if desired) by pressing the ionic button to reduce static and enhance shine.

5.3 Curling Hair (Liss & Curl Function)

The 2-in-1 Liss & Curl system allows you to create beautiful curls and waves.

1. Ensure your hair is clean, dry, and detangled.
2. Divide your hair into small, manageable sections.
3. Take one section of hair and place it between the ceramic plates, close to the roots.
4. Close the plates and rotate the straightener 180 degrees away from your face.
5. Slowly glide the straightener down the hair section, maintaining the rotation. The rounded edges of the plates will help form the curl.
6. Release the hair and allow the curl to cool before styling.
7. Repeat for all sections.

STYLING VERSATILE



Image: Demonstrating the versatile styling capabilities, showing both hair straightening and curling techniques using the appliance.

6. MAINTENANCE AND STORAGE

Proper care and storage will extend the life of your appliance.

1. **Cool Down:** After each use, turn off the appliance and unplug it from the power outlet. Allow it to cool completely on a heat-resistant surface before handling or storing.
2. **Clean Plates:** Once cool, gently wipe the ceramic plates with a soft, damp cloth to remove any hair product residue. Do not use abrasive cleaners or harsh chemicals.
3. **Empty Infuser:** If using the argan oil infuser, empty any remaining oil and clean the infuser as per instructions (if provided in a separate infuser manual).
4. **Locking System:** Engage the locking system to keep the plates closed for compact and secure storage.
5. **Cord Storage:** Do not wrap the power cord tightly around the appliance, as this can damage the cord. Store it loosely coiled.
6. **Storage Location:** Store the appliance in a dry, safe place, away from moisture and extreme temperatures, and out of reach of children.



Image: The Rowenta SF4630 straightener placed on a bathroom counter, illustrating a typical storage scenario after use.

7. TROUBLESHOOTING

If you encounter any issues with your Rowenta SF4630 Express Shine Hair Straightener, please refer to the following common solutions:

Problem	Possible Cause	Solution
Appliance does not turn on.	Not plugged in correctly, power outlet issue.	Ensure the plug is fully inserted into a working electrical outlet. Test the outlet with another device.
Appliance is not heating up.	Temperature setting too low, internal fault.	Increase the temperature setting using the '+' button. Allow 30 seconds for heat-up. If still not heating, contact customer support.
Hair is not straightening effectively.	Hair sections too large, incorrect temperature, plates not clean.	Use smaller hair sections. Increase temperature if hair type requires it. Ensure ceramic plates are clean and free of residue.

Problem	Possible Cause	Solution
Appliance feels too hot or shuts off unexpectedly.	Overheat protection activated.	Unplug the appliance and allow it to cool down completely. The digital heat sensor technology is designed to prevent overheating. If this occurs frequently, contact customer support.
Argan oil infuser not working.	Infuser empty, clogged.	Ensure the infuser is filled with argan oil. Clean the infuser mechanism if it appears clogged.

For issues not listed here, or if the problem persists, please contact Rowenta customer support.

8. SPECIFICATIONS

Feature	Detail
Product Name	Hair Straightener
Brand	Rowenta
Model Number	SF4630F0
Dimensions (L x W x H)	33.1 x 3.87 x 3.87 cm
Weight	410 grams
Color	Black/Gold
Plate Material	Ceramic Coating
Power Source	Corded Electric
Max Temperature	210 °C
Temperature Settings	8 settings (140 °C - 210 °C)
Heat-up Time	30 seconds
Special Features	Argan Oil Infuser, Ionic Effect, 2-in-1 Liss & Curl System, Overheat Protection, Floating Plates, 360° Swivel Cord, Locking System



Image: Dimensional diagram of the Rowenta SF4630 straightener, indicating its length, width, and height.

9. WARRANTY AND SUPPORT

Rowenta is committed to product quality and customer satisfaction.

9.1 Repairability

This product is designed for repairability for 15 years at a fair price, with access to a network of 6,200 approved repair centers worldwide. This commitment reflects Rowenta's dedication to sustainability and product longevity.

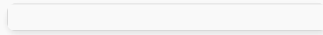


Image: Official logo indicating the product's 15-year repairability commitment.

9.2 Customer Support

For further assistance, product registration, or to locate a service center, please visit the official Rowenta website or contact their customer support directly. You can also visit the [Rowenta Brand Store on Amazon](#) for more information.

