

Moulinex AL5018

Moulinex Easy Fry Oven & Grill 11L Instruction Manual

Model: AL5018

1. INTRODUCTION

This manual provides comprehensive instructions for the safe and efficient use of your Moulinex Easy Fry Oven & Grill 11L. This appliance combines the functions of an air fryer, oven, and grill, offering a versatile solution for preparing a variety of meals with reduced fat. Please read this manual thoroughly before first use and keep it for future reference.

2. IMPORTANT SAFETY INSTRUCTIONS

- Always ensure the appliance is placed on a stable, heat-resistant surface, away from walls and other appliances to allow for proper ventilation.
- Do not immerse the main unit, cord, or plug in water or any other liquid.
- Keep children and pets away from the appliance during operation. The exterior surfaces can become hot.
- Unplug the appliance from the outlet when not in use and before cleaning. Allow it to cool completely before handling or cleaning parts.
- Do not operate any appliance with a damaged cord or plug, or after the appliance malfunctions or has been damaged in any manner.
- Use only accessories recommended by the manufacturer.
- Do not block any ventilation openings.
- Exercise extreme caution when removing hot oil or other hot liquids.
- Do not use the appliance for purposes other than its intended use.

3. PRODUCT OVERVIEW

3.1 Main Unit and Control Panel

The Moulinex Easy Fry Oven & Grill features a compact design with a large 11-liter capacity. It includes a digital touchscreen for easy operation and a transparent viewing window to monitor cooking progress.



Image Description: The main unit of the Moulinex Easy Fry Oven & Grill 11L is shown in black, with its digital control panel visible at the top. Below the control panel is a large transparent door. Various accessories, including two wire racks, a fry basket, a drip tray, a rotisserie spit, extraction tools, and a grill plate, are displayed in front of the unit.

3.2 Included Accessories

Your appliance comes with 7 essential accessories to enhance your cooking experience:

- **2 Wire Racks:** For multi-level cooking and dehydrating.
- **Fry Basket:** Ideal for air frying smaller items like fries or chicken wings.
- **Drip Tray:** Collects excess oil and food particles, making cleanup easier.
- **Rotisserie Spit:** For roasting whole chickens or other large cuts of meat.
- **Extraction Tools:** Safely remove hot accessories from the oven.
- **Grill Plate with Removable Handle:** For searing and grilling various foods.

4. SETUP

1. **Unpacking:** Carefully remove all packaging materials and accessories from the box.

2. **Initial Cleaning:** Before first use, wash all removable accessories (racks, basket, tray, spit, grill plate) with warm soapy water. Wipe the interior and exterior of the main unit with a damp cloth. Ensure all parts are completely dry before assembly.
3. **Placement:** Place the appliance on a stable, level, and heat-resistant surface. Ensure there is adequate space (at least 10 cm) around the appliance for proper air circulation.
4. **Power Connection:** Plug the power cord into a grounded electrical outlet.

5. OPERATING INSTRUCTIONS

5.1 Powering On and Off

To turn on the appliance, press the power button on the touchscreen. To turn off, press and hold the power button until the display shuts down.

5.2 Selecting Cooking Programs and Functions

The appliance offers 8 automatic programs and 9 functions, including air frying, grilling, baking, roasting, dehydrating, broiling, cooking with a grill, and reheating. Use the 'Menu' button on the touchscreen to cycle through the preset programs or manually adjust settings.

8 PROGRAMMES AUTOMATIQUES

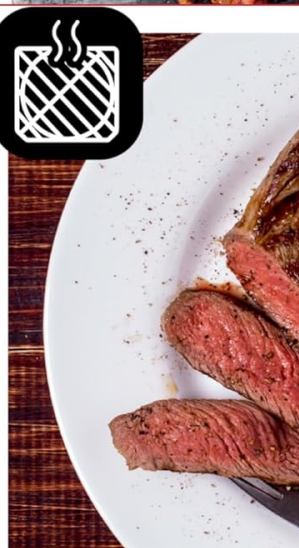
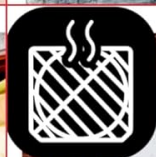


Image Description: A close-up of the digital control panel displaying eight distinct icons representing automatic cooking programs: fries, whole chicken, pizza, red meat, fish, cake, dehydrated fruit, and grilled steak. Each icon is clearly visible, indicating the versatility of the appliance.

5.3 Adjusting Temperature and Time

Use the temperature control buttons (up/down arrows next to the temperature display) to set the desired temperature between 45°C and 200°C. Use the time control buttons (up/down arrows next to the timer display) to set the cooking duration. The timer can be set up to 60 minutes for most functions, and up to 24 hours for the dehydration mode.

5.4 Rotisserie Function

For roasting a whole chicken or other large items, use the rotisserie spit. Secure the food onto the spit, then insert it into the designated slots inside the oven. Select the appropriate program or manually set the temperature and time. The transparent door allows you to monitor the cooking process.

FONCTION RÔTISSERIE



Image Description: The Moulinex Easy Fry Oven & Grill is shown with its door open, revealing a perfectly roasted whole chicken rotating on a rotisserie spit inside. A drip tray is positioned below the chicken to catch juices. The digital control panel displays a temperature of 200 degrees Celsius.

6. ACCESSORIES USAGE

6.1 Wire Racks and Fry Basket

The wire racks can be inserted at different levels for cooking multiple items simultaneously or for dehydrating. The fry basket is ideal for air frying smaller foods, ensuring even crisping.

6.2 Grill Plate

Place the grill plate on one of the rack levels. Use the removable handle to safely insert and remove the hot grill plate. This accessory is designed for searing meats and vegetables, creating distinct grill marks.



Image Description: A hand is shown carefully placing a raw steak onto the ribbed grill plate, which is positioned inside the Moulinex Easy Fry Oven & Grill. The grill plate has a removable handle for safe handling. The interior of the appliance is visible, highlighting the cooking space.

6.3 Drip Tray

Always place the drip tray at the bottom of the oven cavity to catch any drips or crumbs, keeping the interior clean and preventing smoke.

7. CLEANING AND MAINTENANCE

Regular cleaning ensures optimal performance and extends the lifespan of your appliance.

- **Before Cleaning:** Always unplug the appliance and allow it to cool completely.
- **Removable Accessories:** All removable accessories (wire racks, fry basket, drip tray, rotisserie spit, grill plate, extraction tools) are dishwasher-safe. For manual cleaning, use warm soapy water and a non-abrasive sponge.
- **Main Unit:** Wipe the exterior with a damp cloth. For the interior, use a damp, non-abrasive sponge and mild detergent. Do not use harsh chemicals or abrasive cleaning pads.
- **Non-Stick Coating:** The non-stick coating on certain accessories requires gentle cleaning to prevent damage. Avoid metal utensils.
- **Storage:** Ensure all parts are clean and dry before storing the appliance in a cool, dry place.

8. TROUBLESHOOTING

If you encounter any issues with your Moulinex Easy Fry Oven & Grill, please refer to the following common problems and solutions:

Problem	Possible Cause	Solution
Appliance does not turn on.	Not plugged in; power outlet malfunction; appliance malfunction.	Ensure the power cord is securely plugged into a working outlet. Check the circuit breaker. If the issue persists, contact customer support.
Food is not cooking evenly.	Overcrowding; incorrect temperature/time; food not turned/shaken.	Do not overcrowd the basket/racks. Ensure proper temperature and cooking time are set. Turn or shake food halfway through cooking for even results.
White smoke coming from the appliance.	Grease residue from previous use; high-fat food cooking.	Clean the drip tray and interior thoroughly after each use. For high-fat foods, ensure the drip tray is in place and consider reducing the amount of oil used.
Food is not crispy.	Too much moisture; insufficient oil (for air frying); overcrowding.	Pat food dry before cooking. Use a small amount of oil for air frying. Cook in smaller batches to allow hot air to circulate.

9. SPECIFICATIONS

- **Brand:** Moulinex
- **Model Number:** AL5018
- **Capacity:** 11 Liters
- **Power:** 2000 Watts
- **Voltage:** 220 Volts (AC)
- **Material:** Plastic
- **Dimensions (L x W x H):** 37 x 32 x 31 cm
- **Weight:** 8 Kilograms
- **Adjustable Temperature:** 45°C to 200°C
- **Timer:** Up to 60 minutes (24 hours for dehydration mode)

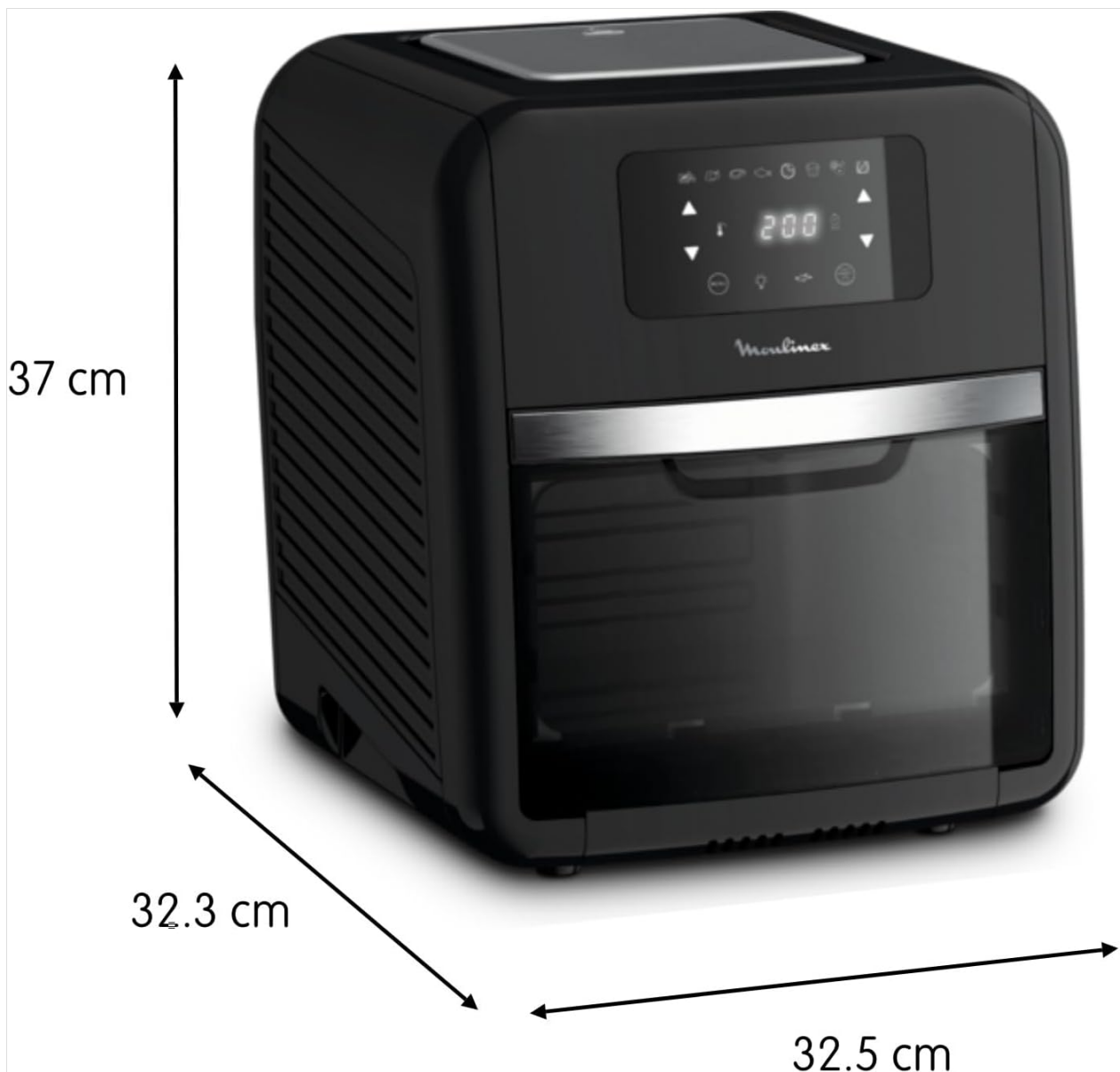


Image Description: A black Moulinex Easy Fry Oven & Grill is shown from a slight angle, with arrows and numerical labels indicating its dimensions: 37 cm in height, 32.3 cm in width, and 32.5 cm in depth. This provides a clear visual representation of the appliance's physical size.

10. WARRANTY AND SUPPORT

For warranty information, please refer to the documentation included with your product packaging or visit the official Moulinex website. For technical support, spare parts, or service inquiries, please contact Moulinex customer service in your region.