

CLABEL 220B

CLABEL 220B Thermal Bluetooth Label Printer User Manual

Model: 220B

1. INTRODUCTION

This manual provides comprehensive instructions for the safe and efficient operation of your CLABEL 220B Thermal Bluetooth Label Printer. This portable, inkless label maker is designed for various applications in small businesses, offices, and homes, supporting label widths from 20mm to 50mm.

2. PACKAGE CONTENTS

Please verify that all items listed below are included in your package:

- CLABEL 220B Thermal Bluetooth Label Printer
- 1 Roll of Thermal Labels
- USB Charging Cable
- User Manual (this document)

3. PRODUCT OVERVIEW

Familiarize yourself with the components of your CLABEL 220B printer.



Image: The CLABEL 220B printer, showcasing its compact design, a printed label emerging from the output slot, and a roll of blank labels.

The printer features a power button, a feed button, and a label compartment. The charging port is typically located on the side or back.

4. SETUP

4.1. Charging the Printer

Before initial use, fully charge the printer. Connect the provided USB cable to the printer's charging port and to a 5V-2A power adapter (not included) or a computer's USB port. The charging indicator light will show the charging status.

4.2. Loading Labels

Follow these steps to correctly load the thermal labels:

Label Installation



Image: Step-by-step guide for label installation, showing opening the cover, setting jam protection, inserting labels, and closing the cover.

1. Open the printer cover.
2. Set the jam protection to "OPEN" if applicable.
3. Insert the label roll into the compartment, ensuring the printable side faces up and the labels are aligned on the left.
4. Pull out a small length of labels and close the cover securely.

5. CONNECTION

5.1. Mobile Phone Connection (Bluetooth)

The CLABEL 220B supports connection with iOS and Android devices via Bluetooth.



Image: Mobile phone connection steps, illustrating downloading the 'Clabel trade' app, enabling Bluetooth, and connecting to the printer within the app.

1. Download the "CLABEL trade" app from your device's app store (iOS App Store or Android Google Play Store).
2. Ensure Bluetooth is enabled on your mobile phone.
3. Open the "CLABEL trade" app and connect to your printer from the device list.

5.2. PC Connection (USB)

For Windows PCs, connect the printer using the provided USB cable.

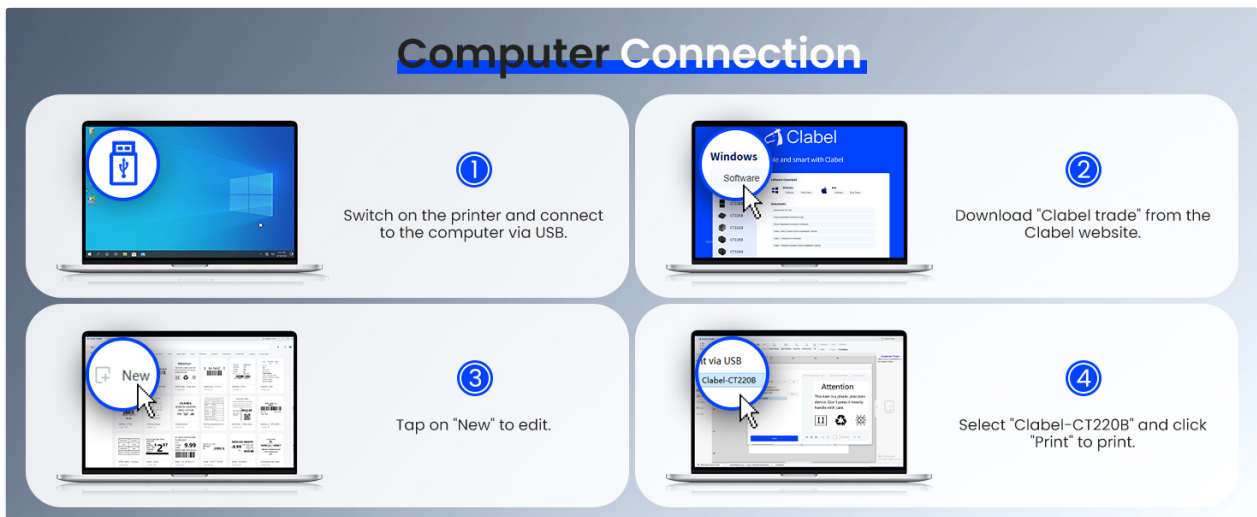


Image: Computer connection steps, detailing turning on the printer, connecting via USB, downloading the driver/app, and printing.

1. Switch on the printer.
2. Connect the printer to your computer via the USB cable.
3. Download the necessary driver or application from the official CLABEL brand website.
4. Open the application, create or select a label, and initiate printing.

6. OPERATING INSTRUCTIONS

6.1. Using the CLABEL Trade App

The "CLABEL trade" app offers extensive features for label creation and management:

- Access over 30 business label templates.
- Utilize more than 450 common symbols for various applications.
- Create and customize your own label templates.
- Edit and typeset labels with text, barcodes, QR codes, images, and more.

6.2. Batch Printing

The printer supports batch printing, allowing you to import data from Excel tables to print multiple labels efficiently. This feature helps improve printing efficiency by setting the printing quantity without repetitive operations.

6.3. Recommended Label Sizes and Uses

The CLABEL 220B printer supports labels with a width of 20-50mm and a length of 15-100mm, accommodating various styles and applications.

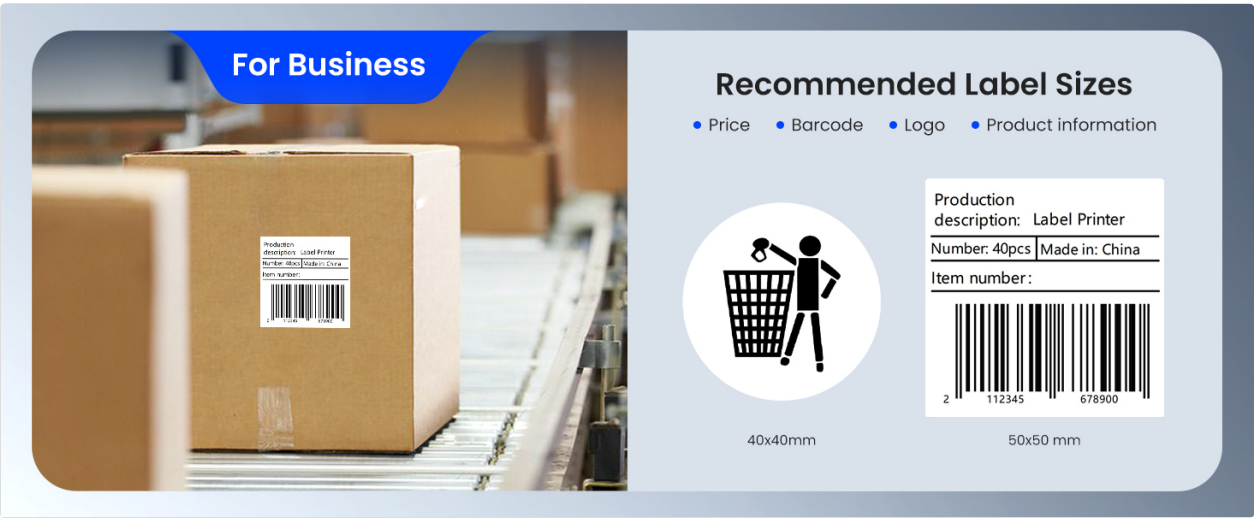


Image: Recommended label sizes for business applications, including price tags, barcodes, logos, and product information (e.g., 40x40mm, 50x50mm).



Image: Recommended label sizes for food applications, such as bakery items, ingredient lists, and price & date labels (e.g., 40x30mm, 50x40mm).



Image: Recommended label sizes for office organization, including labels for letters, addresses, folders, and cables (e.g., 25x78mm, 50x30mm).

7. MAINTENANCE

To ensure optimal performance and longevity of your CLABEL 220B printer, follow these maintenance guidelines:

- **Cleaning the Print Head:** Regularly clean the thermal print head with an alcohol swab to remove dust or adhesive residue. Ensure the printer is off and cooled down before cleaning.
- **Exterior Cleaning:** Wipe the exterior of the printer with a soft, dry cloth. Avoid using harsh chemicals or abrasive materials.
- **Storage:** Store the printer in a cool, dry place away from direct sunlight and extreme temperatures.
- **Battery Care:** For long-term storage, charge the battery to about 50% every three months to prevent deep discharge.

8. TROUBLESHOOTING

If you encounter issues with your CLABEL 220B printer, refer to the following common problems and solutions:

Problem	Possible Cause	Solution
Printer does not turn on	Low battery or power issue	Charge the printer fully. Ensure the power button is pressed correctly.
Poor print quality (light or spotty)	Dirty print head, incorrect label type, or low battery	Clean the print head. Ensure you are using thermal labels. Charge the printer. Adjust print density in the app if available.
Labels are misaligned or jammed	Labels not loaded correctly	Open the cover, re-align the label roll, and ensure it's properly seated. Refer to Section 4.2.
Cannot connect via Bluetooth	Bluetooth off, app issue, or printer not discoverable	Ensure Bluetooth is enabled on your phone and the printer is on. Restart the app and printer. Try re-pairing the device.
PC connection issues	Driver not installed, incorrect cable, or software issue	Install the correct driver from the CLABEL website. Ensure the USB cable is functional. Restart PC and printer.

If the problem persists, please contact CLABEL customer support for further assistance.

9. SPECIFICATIONS

Key technical specifications for the CLABEL 220B Thermal Bluetooth Label Printer:

- **Model:** 220B
- **Printing Technology:** Thermal
- **Connectivity:** Bluetooth, USB
- **Printer Output:** Monochrome
- **Maximum Print Resolution:** 203 DPI
- **Maximum Media Size:** 25-50mm (width)
- **Compatible Devices:** Smartphones (iOS, Android), Windows XP or above
- **Battery Capacity:** 2200mAh
- **Power Consumption:** 2.2 Watts (On-mode)

- **Product Dimensions:** 4.65"D x 4.6"W x 2.88"H
- **Item Weight:** 14.1 ounces (400 Grams)

10. WARRANTY AND SUPPORT

The CLABEL 220B Thermal Bluetooth Label Printer comes with a limited warranty. For specific warranty terms and conditions, please refer to the documentation included with your purchase or visit the official CLABEL website.




For additional support, including detailed user guides and installation manuals, please refer to the following resources:

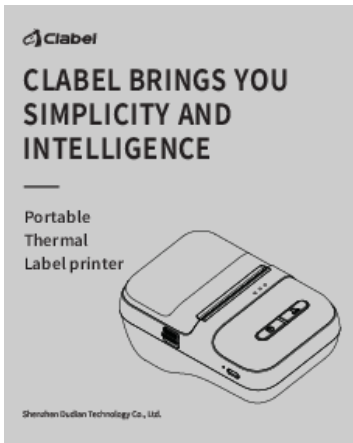
- Official CLABEL Website: [CLABEL Store](#)
- User Guide (PDF): [Download User Guide](#)
- Installation Manual (PDF): [Download Installation Manual](#)

For technical assistance or customer service inquiries, please contact CLABEL support through their official channels.

© 2023 CLABEL. All rights reserved.

Related Documents - 220B

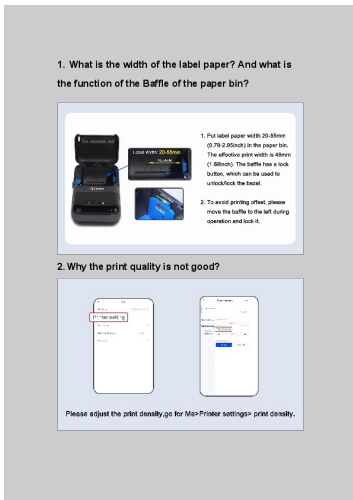
	<p>CLABEL Label Maker: Installation Guide for Clabel Trade App and Drivers</p> <p>Comprehensive guide to installing the Clabel Trade app and drivers for iOS, Android, and Windows devices. Learn how to connect your CLABEL label printer for seamless operation.</p>
	<p>CLABEL 220B Portable Label Maker: FAQ and Usage Guide</p> <p>Get answers to common questions about the CLABEL 220B portable label maker, including setup, printing, app connectivity, and troubleshooting. Learn how to load paper, improve print quality, and contact support.</p>
	<p>Clabel CT221B Label Printer User Manual - Setup and Operation Guide</p> <p>Explore the Clabel CT221B Label Printer with this comprehensive user manual. Learn about packing, components, functions, paper loading, mobile/computer printing, and troubleshooting. Available in multiple languages.</p>



[Clabel CT220B Portable Thermal Label Printer User Manual and Guide](#)

Comprehensive guide for the Clabel CT220B portable thermal label printer, covering setup, mobile and computer printing instructions, product overview, and technical specifications.

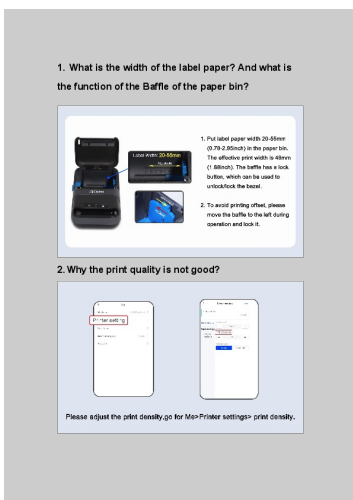
lang:en score:23 filesize: 6 M page_count: 19 document date: 2022-01-24



[CLABEL 220B Portable Label Maker: FAQ and Usage Guide](#)

Get answers to common questions about the CLABEL 220B portable label maker, including setup, printing, app connectivity, and troubleshooting. Learn how to load paper, improve print quality, and contact support.

lang:en score:21 filesize: 650.23 K page_count: 4 document date: 2022-11-24



[\[pdf\] Frequently Asked Questions Label](#)

Dimples FAQ Amazon CLABEL Label Maker 220B Portable Barcode Printer for Address Clothing Retail Jewelry QR Code Small Business Compatible with Android iOS System Use Home Office Black Products 91ga8Yyoj9L m media amazon images I |||

1. What is the width of the label paper And what is the function of the Baffle of the paper bin 2. Why the print quality is not good 3.How to load the label paper correctly If load it incorrectly, the label paper may not function properly. 4.Why my device bluetooth connection is not successfu...

lang:en score:21 filesize: 650.39 K page_count: 4 document date: 2022-11-22

User Manual

CT220B Label Printer



Please read this user manual guide carefully
before operating the product.

[\[pdf\]](#) Guide Label

CT220B V1 0 User guide Label Maker CLABEL 220B Portable Barcode Printer Mini Wireless Thermal Machine Compatible with iOS System for Retail QR Code Small Business Office Products A1b105Sj IL m media amazon images I |||

...

lang:en score:20 filesize: 1.54 M page_count: 20 document date: 2023-04-24