

QIBOX TYZJ03

QIBOX Anti-Theft Video Doorbell Mount (Model TYZJ03) Instruction Manual

1. INTRODUCTION AND OVERVIEW

This manual provides detailed instructions for the installation, operation, and maintenance of your QIBOX Anti-Theft Video Doorbell Mount, Model TYZJ03. This mount offers a secure, no-drill installation solution for compatible video doorbells, designed to protect your device from theft and damage while allowing flexible placement on inward-swinging doors without permanent alterations.

2. PRODUCT FEATURES

- **Anti-Theft Design:** Encapsulates the video doorbell, preventing unauthorized removal from the exterior.
- **No-Drill Installation:** Attaches securely to your door without requiring any drilling or permanent modifications.
- **Adjustable Fit:** Designed to accommodate various door thicknesses, specifically between 0.6 inches and 2.3 inches.
- **Versatile Door Compatibility:** Suitable for most inward-opening doors, whether they open from the left or right. Not suitable for outward-opening doors.
- **Durable Construction:** Manufactured from a combination of stainless steel and plastic for enhanced durability.

3. PACKAGE CONTENTS

Please verify that all items are present in your package:

- 1x QIBOX Anti-Theft Video Doorbell Mount
- Installation instructions (this manual)
- Various installation accessories (screws, foam pads)

4. COMPATIBILITY

The QIBOX Anti-Theft Video Doorbell Mount is compatible with the following video doorbell models:

- Ring Video Doorbell
- Ring Video Doorbell 2
- Ring Video Doorbell 3
- Ring Video Doorbell 3 Plus
- Ring Video Doorbell 4
- Ring Video Doorbell (2020 Release)

Note: This mount is NOT suitable for Blink 2nd Gen (newest model) or other Blink models not explicitly listed.

The maximum dimensions for a compatible video doorbell are 2.55 inches wide x 5.11 inches high x 1.14 inches thick.

Compatible With Most Video Doorbells

Maximum size of Video Doorbell:
2.55inch Wide X 5.11inch Tall X 1.14inch Thick

Applicable Model ✓

Model	Compatibility
Video Doorbell	Compatible
Video Doorbell (2020 release)	Compatible
Video Doorbell 2	Compatible
Video Doorbell 3	Compatible
Video Doorbell 3 PULS	Compatible
Video Doorbell 4	Compatible
Blink Video Doorbell	Compatible
Blink Video Doorbell (newest model)	Not Compatible

Figure 1: Compatibility Chart. This image displays the various Ring and Blink video doorbell models compatible with the QIBOX mount, along with the maximum allowable dimensions for the doorbell device.

5. INSTALLATION AND SETUP

Follow these steps to install your QIBOX Anti-Theft Video Doorbell Mount:

1. Prepare the Mount:

The mount consists of two main parts: the outer casing and the inner bracket. Ensure these are separated. Locate the included foam pads. Cut the thick square pad into 6 smaller square pads of equal size. Divide these into two groups of three. Remove the adhesive backing and attach three pads to the back cover of the inner bracket, ensuring they are evenly spaced to provide cushioning for your doorbell.

Video 1: QIBOX Anti-Theft Doorbell Mount Overview. This video provides a general overview of the QIBOX Anti-Theft Doorbell Mount, demonstrating its components and basic assembly.

Video 2: How to Install QIBOX Anti-theft Doorbell Mount. This video demonstrates the step-by-step installation process of the QIBOX Anti-Theft Doorbell Mount, including preparing the pads and securing the doorbell.

2. Insert Your Video Doorbell:

Carefully place your compatible video doorbell into the outer casing of the mount. Ensure it fits snugly and is aligned correctly with the camera and button cutouts.

3. Assemble the Mount:

Slide the inner bracket into the outer casing, securing your doorbell inside. Use the provided screws to fasten the inner bracket to the outer casing. This step secures your doorbell within the anti-theft enclosure.

4. Measure Door Thickness:

Before attaching the mount, measure the thickness of your door. The mount is designed for doors between 0.6 inches and 2.3 inches thick. Ensure your door falls within this range for a secure fit.

Applicable to the doors opened from left or right

The door must be swing inward



Figure 2: Door Thickness Measurement. This image illustrates the correct method for measuring your door's thickness to ensure compatibility with the mount.

5. Attach to Door:

Position the assembled mount on the edge of your door. The metal bracket should wrap around the door edge, with the doorbell facing outwards. The adjustment screw should be on the inside of your door.



Figure 3: Installed Doorbell Mount. A view of the QIBOX Anti-Theft Video Doorbell Mount with a compatible video doorbell securely installed on a door.

6. Adjust and Secure:

Tighten the adjustment screw on the inside of the door until the mount is firmly secured and does not move. Do not overtighten, as this may damage the bracket or your door. The mount can be adjusted to position the doorbell on the left or right side of the door frame as needed.

CAN BE ADJUSTED LEFT AND RIGHT

The distance to door edge can be adjusted

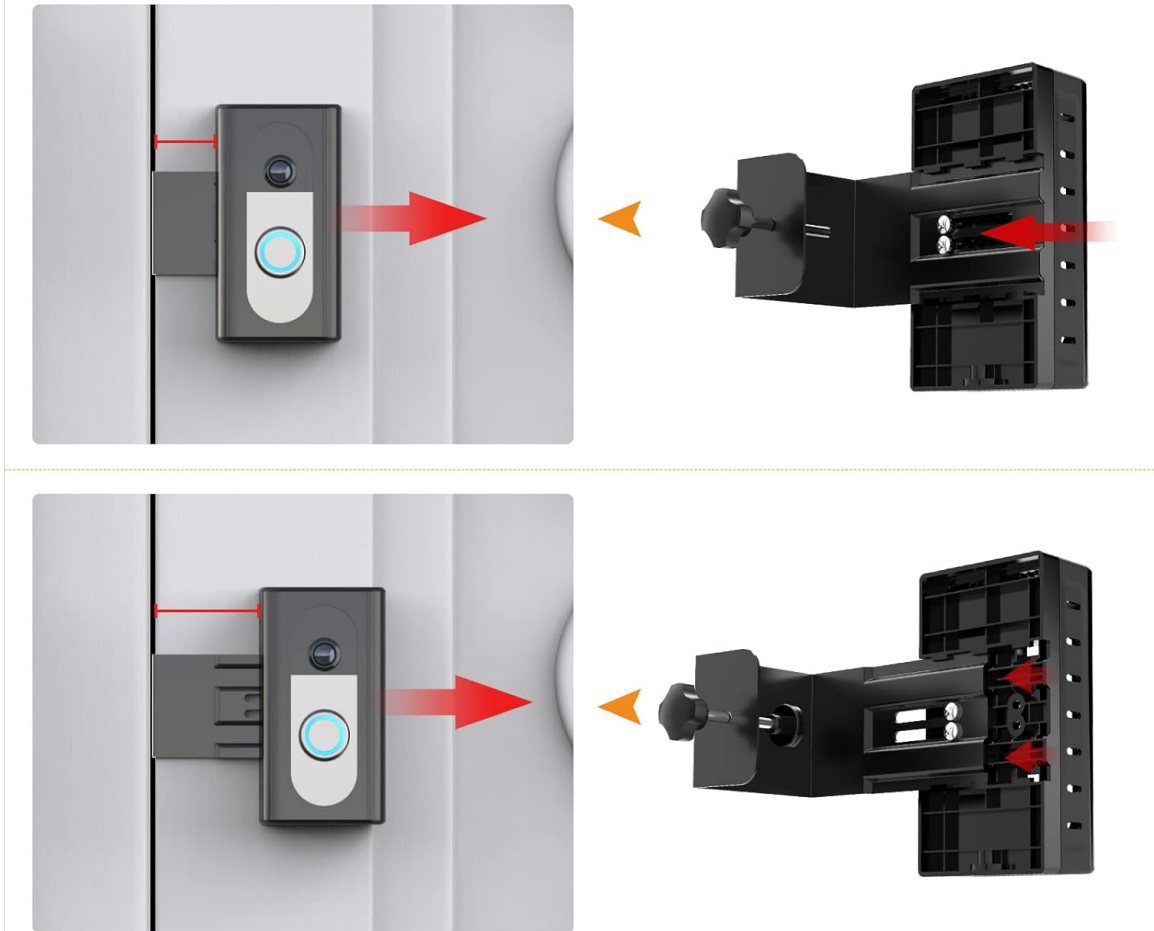


Figure 4: Adjustable Positioning. This diagram shows how the mount can be adjusted to position the doorbell on either the left or right side of the door frame.



Figure 5: Key Features. An infographic detailing the benefits of the mount, including all-around protection, no drilling required, anti-theft design, and easy removal.

6. OPERATING INSTRUCTIONS

Once the QIBOX Anti-Theft Video Doorbell Mount is securely installed, your video doorbell will function normally within the enclosure. Ensure the doorbell's camera view is unobstructed and that the button is easily accessible to visitors. The mount does not interfere with the doorbell's operational features.



Figure 6: Discreet Installation. This image shows the doorbell mount installed on a door, highlighting its discreet and functional design.

7. MAINTENANCE

To ensure the longevity and optimal performance of your QIBOX Anti-Theft Video Doorbell Mount:

- **Regular Inspection:** Periodically check the adjustment screw on the inside of your door to ensure it remains tight and secure.
- **Cleaning:** Clean the mount and your doorbell's casing with a soft, damp cloth. Avoid using harsh chemicals or abrasive cleaning materials, as these may damage the finish.
- **Doorbell Charging:** When your video doorbell requires charging, simply loosen the internal adjustment screw, remove the mount from the door, and access your doorbell. Reinstall after charging.

8. TROUBLESHOOTING

- **Mount feels loose on the door:** Tighten the internal adjustment screw until the mount is firm. Ensure not to overtighten.

- **Doorbell does not fit inside the mount:** Verify your doorbell's dimensions against the maximum compatible size (2.55" W x 5.11" H x 1.14" T) and check the compatibility list in Section 4.
- **Door does not close properly after installation:** Ensure the door thickness is within the specified range (0.6 to 2.3 inches). Adjust the mount's position on the door edge to prevent obstruction.
- **Concern about doorbell theft:** The anti-theft design ensures that the doorbell is fully enclosed and secured by an internal screw, making it inaccessible from the outside when the door is closed.

9. SPECIFICATIONS

Specification	Detail
Model Number	TYZJ03
Item Weight	10.9 ounces
Product Dimensions	3.11 x 3.22 x 5.82 inches
Color	Black
Material	Stainless Steel + Plastic
Installation Method	Door-Mounted
Item Package Quantity	1

10. WARRANTY AND SUPPORT

For any problems encountered with the received product or during installation, please do not hesitate to contact QIBOX customer support. We are committed to resolving any issues immediately.

This product is covered by a return policy of 2026 days from the date of purchase.