



[Manuals.plus](#) /

› [Motorola Nursery](#) /

› Motorola VM481 Video Baby Monitor User Manual

## Motorola Nursery VM481

# Motorola VM481 Video Baby Monitor User Manual

Model: VM481 | Brand: Motorola Nursery

## 1. INTRODUCTION

This user manual provides essential information for the safe and effective operation of your Motorola VM481 Video Baby Monitor. Please read this manual thoroughly before using the product and retain it for future reference.

The Motorola VM481 is a wireless video baby monitor designed to help you keep an eye on your baby. It features a camera unit and a portable parent unit with a 2-inch color screen, offering a secure and private connection without the need for Wi-Fi.



Image: The Motorola VM481 Video Baby Monitor, featuring the camera unit on the left and the parent unit with a 2-inch color screen on the right. The parent unit displays a live feed of a baby.

## 2. PRODUCT COMPONENTS

The Motorola VM481 Video Baby Monitor package typically includes the following components:

- Baby Unit (Camera)
- Parent Unit (Monitor)
- Power Adapters for both units
- Rechargeable Battery for Parent Unit (pre-installed or included separately)
- User's Guide (this manual)

## 3. SETUP

### 3.1 Powering the Baby Unit (Camera)

1. Place the Baby Unit in a convenient location where it can capture the desired view of your baby. Ensure it is out of reach of children.
2. Connect the small plug of the power adapter to the power socket on the Baby Unit.

3. Plug the other end of the power adapter into a suitable electrical outlet.
4. The Baby Unit will power on automatically.

### 3.2 Powering the Parent Unit (Monitor)

1. Ensure the rechargeable battery is correctly installed in the Parent Unit.
2. Connect the small plug of the power adapter to the power socket on the Parent Unit.
3. Plug the other end of the power adapter into a suitable electrical outlet.
4. Press and hold the Power button on the Parent Unit to turn it on.
5. For optimal battery performance, charge the Parent Unit for at least 16 hours before initial use.

### 3.3 Pairing the Units

The Baby Unit and Parent Unit are pre-paired at the factory. If they lose connection or you are adding an additional camera, follow these steps:

- Ensure both units are powered on and within range of each other.
- On the Parent Unit, navigate to the Menu and select the "Add Camera" option.
- Follow the on-screen prompts to initiate pairing.
- On the Baby Unit, press and hold the Pair button (usually located on the back or bottom) until the Parent Unit confirms successful pairing.



Image: A visual representation of the secure, private connection established directly between the camera unit and the parent unit, indicating no Wi-Fi or app is needed for operation.

## 4. OPERATING INSTRUCTIONS

### 4.1 Parent Unit Controls

Familiarize yourself with the buttons and indicators on the Parent Unit:

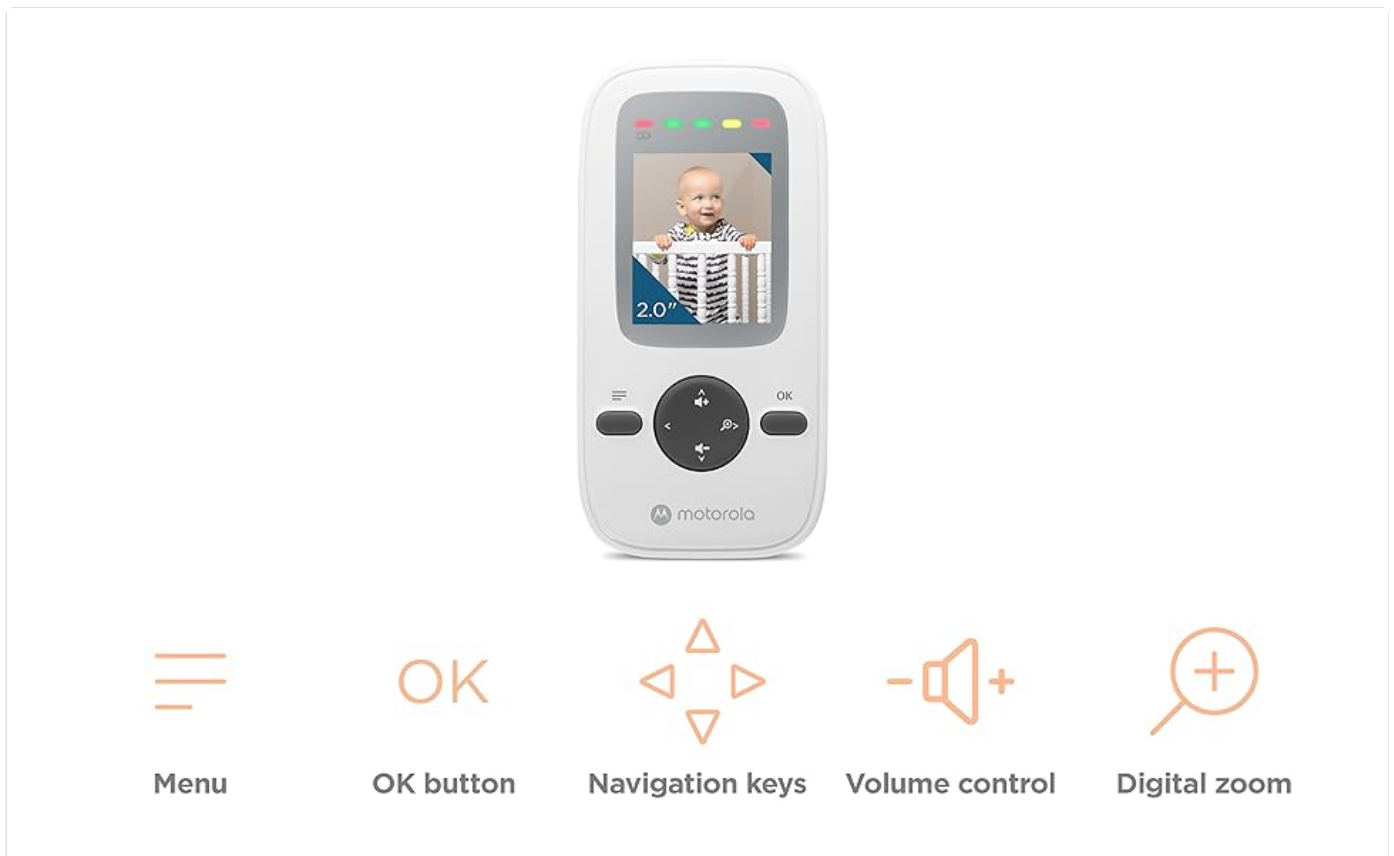


Image: A detailed diagram illustrating the controls on the Motorola VM481 parent unit, including the Menu button, OK button, Navigation keys, Volume control, and Digital zoom button.

- **Power Button:** Press and hold to turn the unit on/off.
- **Menu Button:** Access the main menu for settings and options.
- **OK Button:** Confirm selections within the menu.
- **Navigation Keys (Up/Down/Left/Right):** Navigate through menu options and adjust settings.
- **Volume Control:** Adjust the audio volume from the Baby Unit.
- **Digital Zoom Button:** Zoom in on the video feed.
- **LED Sound Level Indicator:** Visual indication of sound detected by the Baby Unit.

## 4.2 Monitoring Your Baby

- Once both units are powered on and paired, the Parent Unit will display the live video feed from the Baby Unit.
- Adjust the volume using the volume control buttons on the Parent Unit.
- The monitor features a 2-inch color LCD screen for clear viewing.

## 4.3 Digital Zoom

To get a closer look at your baby, use the digital zoom feature:

- Press the Digital Zoom button on the Parent Unit to activate zoom.
- Use the navigation keys to pan the zoomed image.
- Press the Digital Zoom button again to return to normal view.



Image: The Motorola VM481 camera unit with an overlay indicating the digital zoom capability, allowing users to get a perfect view of their little one.

## 4.4 Infrared Night Vision

The Baby Unit is equipped with infrared LEDs for clear viewing in low light conditions or complete darkness.

- Night vision activates automatically when the light level in the room is low.
- The video feed on the Parent Unit will switch to a black and white image.



Image: A split image demonstrating the infrared night vision feature. The left side shows a baby in a crib during the day, and the right side shows the same baby in black and white, illustrating clear visibility in dark conditions.

## 4.5 Temperature Monitoring

The Baby Unit includes a temperature sensor to monitor the room temperature. The temperature reading is displayed on the Parent Unit's screen, allowing you to ensure your baby's room is comfortable.

## 4.6 Secure and Private Connection

The Motorola VM481 uses 2.4 GHz FHSS wireless technology to provide a secure and private connection between the Baby Unit and Parent Unit. This system does not require Wi-Fi or an app for operation, ensuring your privacy.



Image: An icon representing a secure Wi-Fi connection, accompanied by text emphasizing the secure and private connection of the Motorola VM481 baby monitor.

## 5. MAINTENANCE

- **Cleaning:** Clean the monitor and camera units with a soft, lint-free cloth. Do not use cleaning agents or solvents.
- **Battery Care:** To prolong battery life, avoid overcharging the Parent Unit. If storing the unit for an extended period, remove the battery.
- **Storage:** Store the unit in a cool, dry place away from direct sunlight and heat sources.

## 6. TROUBLESHOOTING

Problem	Possible Cause	Solution
No picture or sound on Parent Unit.	Units are not powered on. Units are out of range. Units are not paired.	Ensure both units are plugged in and turned on. Move Parent Unit closer to Baby Unit. Re-pair the units as described in Section 3.3.
Picture is black and white.	Infrared night vision is active.	This is normal operation in low light conditions. The picture will return to color when sufficient light is available.
Static or interference.	Other 2.4 GHz devices nearby. Units are too far apart.	Move the monitor away from other electronic devices. Move Parent Unit closer to Baby Unit.
Parent Unit battery drains quickly.	Battery not fully charged. Battery life naturally degrades over time.	Ensure initial 16-hour charge. Consider replacing the battery if it's old and performance has significantly degraded.

## 7. SPECIFICATIONS

Feature	Detail
Model Name	VM481
Brand	Motorola Nursery
Connectivity Technology	Wireless (2.4 GHz FHSS)
Screen Size	2.0 inches (Color LCD)
Range	Up to 1000 feet (line of sight)
Audio	1-Way Audio, High-sensitivity microphone, LED sound level indicator
Video Features	Digital Zoom, Infrared Night Vision
Special Features	Cry Detection, Temperature Monitoring
Power Source	Battery Powered (Parent Unit), AC Adapter (Baby Unit)
Batteries Required	1 Lithium Ion battery (included for Parent Unit)
Indoor/Outdoor Usage	Indoor
Mounting Type	Wall Mount (optional)
Item Weight	1.05 pounds
UPC	810036771177

## 8. WARRANTY AND SUPPORT

For detailed warranty information, please refer to the warranty card included with your product or visit the official Motorola Nursery website. Keep your proof of purchase for warranty claims.

For technical support, frequently asked questions, or to purchase accessories, please visit the Motorola Nursery support page or contact their customer service directly. Contact information can typically be found on the product packaging or the official website.

Official Brand Store: [Motorola Nursery Store on Amazon](#)

© 2024 Motorola Nursery. All rights reserved.

Motorola and the Stylized M Logo are trademarks or registered trademarks of Motorola Trademark Holdings, LLC.