

EXFIT T100 ANC

EXFIT T100 ANC Wireless Earbuds User Manual

Model: T100 ANC | Brand: EXFIT

1. PRODUCT OVERVIEW

The EXFIT T100 ANC Wireless Earbuds are designed to provide a superior audio experience with Active Noise Cancelling (ANC), Ambient mode, and a low-latency Game mode. Featuring Bluetooth 5.2 for stable connectivity and an ergonomic design for comfortable wear, these earbuds offer up to 24 hours of total playtime with the charging case.



Image: The EXFIT T100 ANC Wireless Earbuds are shown resting inside their sleek black charging case, which is open to reveal the earbuds. The earbuds themselves are black with a glossy, reflective surface.

2. WHAT'S IN THE BOX

- Right Earbud
- Left Earbud
- Earbuds Cradle (Charging Case)
- USB-C Cable
- Replacement Eargel Set (XS/S/M/L)
- Documentation (User Manual)

3. SETUP

3.1 Initial Charging

Before first use, fully charge the earbuds and the charging case. Connect the provided USB-C cable to the charging case and a compatible power source. A full charge typically takes approximately 3 hours. The indicator light on the case will show charging status.



Image: A top-down view of the EXFIT T100 ANC charging case, which is a compact, rectangular black unit with rounded edges. A small, circular blue indicator light is visible on the front surface, indicating power or charging status.

3.2 Pairing with Your Device

1. Ensure the earbuds are in the charging case and the case has sufficient charge.
2. Open the charging case lid. The earbuds will automatically enter pairing mode.
3. On your device (smartphone, tablet, etc.), enable Bluetooth and search for new devices.
4. Select "EXFIT T100 ANC" from the list of available devices.
5. Once connected, you will hear an audio prompt, and the earbuds will be ready for use.

The latest Bluetooth 5.2 technology ensures a stable connection and extended range.

3.3 Adjusting Earbud Fit

For optimal sound quality and comfort, select the eargel tips that best fit your ears. The package includes multiple sizes (XS/S/M/L). Experiment with different sizes to find a secure and comfortable seal.



Image: A close-up of a person's ear with the EXFIT T100 ANC earbud securely placed inside. The earbud is black and blends well with the ear's contours, demonstrating a proper fit.

4. OPERATING INSTRUCTIONS

4.1 Touch Controls

The EXFIT T100 ANC earbuds feature intuitive touch controls on each earbud. Please note that precise touch sensitivity may vary.

- **Answer Call / Play/Pause:** Single tap on either the Left (L) or Right (R) earbud.
- **Hang Up / Reject Call:** Press and hold for 2 seconds on either L or R earbud.
- **Volume Up/Down:** Double tap on the R earbud for Volume Up, double tap on the L earbud for Volume Down.
- **Next Track / Previous Track:** Triple tap on the R earbud for Next Track, triple tap on the L earbud for Previous Track.
- **ANC/Ambient Mode Toggle:** Press and hold for 1 second on either L or R earbud to cycle through Active Noise Cancelling (ANC), Ambient Mode, and Normal Mode.

4.2 Sound Modes

The T100 ANC earbuds offer three distinct sound modes:

- **Active Noise Cancelling (ANC):** Reduces external ambient noise, allowing for a more immersive listening experience. Ideal for noisy environments.
- **Ambient Mode:** Allows you to hear your surroundings while still enjoying your audio. Useful for staying aware of traffic or conversations.
- **Normal Mode:** Standard audio playback without noise cancellation or ambient sound enhancement.



Image: A graphic depicting two earbuds with sound waves around them, illustrating the concepts of Active Noise Cancelling (ANC) and Ambient sound modes. The text below emphasizes controlling noises and voices.

4.3 Game Mode (Low Latency)

Activate Game Mode for reduced audio latency, providing a more synchronized experience for gaming or video playback. This mode minimizes the delay between on-screen action and audio output.



Image: A visual representation of the earbuds' low-latency Game Mode, showing the earbuds seemingly extending out from a smartphone screen that displays a vibrant racing game, symbolizing seamless audio-visual synchronization.

4.4 EXFIT Manager App

Enhance your experience with the EXFIT Manager App. The app allows you to:

- Update earbud firmware.
- Customize touch controls.
- Adjust the strength level of ANC and Ambient sound.
- Choose from four sound equalizers: Signature, Treble, Bass, and Natural EQ, tuned by a professional audio engineer.



Image: A screenshot of the EXFIT Manager App interface displayed on a smartphone, showcasing various sound customization options, including an equalizer graph, allowing users to fine-tune their audio experience.

4.5 Battery Life and Charging

The T100 ANC earbuds provide impressive battery performance:

- Up to 8 hours of playtime on a single charge for the earbuds.
- An additional 16 hours of playtime provided by the charging cradle, totaling 24 hours of use.
- Quick charge feature: Just 5 minutes of charging can provide up to 1 hour of playtime.



Your sound



Tune your own sound that you're asking for,
whichever you want on **MATE**



Image: A graphic highlighting the battery performance of the EXFIT T100 ANC earbuds, showing "24+ hours" total playtime and a quick charge benefit of "5 minutes for up to 1 hour" of use, with the earbuds in their charging case.

5. MAINTENANCE

5.1 Cleaning

Regularly clean your earbuds and charging case to ensure optimal performance and hygiene.

- Use a soft, dry, lint-free cloth to wipe the earbuds and charging case.
- Gently remove any earwax or debris from the eargels and speaker mesh using a small, soft brush or cotton swab.
- Ensure charging contacts on both earbuds and case are clean and dry.

5.2 Water Resistance (IPX4)

The EXFIT T100 ANC earbuds are rated IPX4 water resistant, meaning they are protected against splashing water from any direction. This makes them suitable for workouts and light rain.

Important Note:

- IPX4 rating does not mean the earbuds are waterproof. Do not submerge them in water or expose them to strong jets of water.
- Damage caused by liquid immersion is not covered under warranty.

5.3 Storage

When not in use, store the earbuds in their charging case to protect them from dust, damage, and to keep them charged.

6. TROUBLESHOOTING

If you encounter issues with your EXFIT T100 ANC earbuds, please refer to the following common solutions:

6.1 Connectivity Issues (Frequent Disconnections)

- **Re-pair Earbuds:** Delete "EXFIT T100 ANC" from your device's Bluetooth list and attempt to pair again from scratch.
- **Reset Bluetooth:** Turn off and on your device's Bluetooth.
- **Reduce Interference:** Ensure no other strong wireless signals are nearby.

6.2 ANC/Ambient Mode Not Working

- **Firmware Update:** Connect to the EXFIT Manager App and check for any available firmware updates. Updates can resolve performance issues.
- **Factory Reset:** Perform a factory reset (see section 6.5).
- **Proper Fit:** Ensure the earbuds have a proper seal in your ear. An improper fit can significantly reduce ANC effectiveness.

6.3 Charging Issues

- **Check Cable and Adapter:** Ensure the USB-C cable and power adapter are working correctly. Try a different cable or adapter.
- **Clean Contacts:** Clean the charging contacts on both the earbuds and inside the charging case with a dry cotton swab.

- **Earbud Placement:** Ensure earbuds are correctly seated in the charging case.

6.4 Touch Controls Unresponsive

- **Clean Earbuds:** Ensure the touch surface is clean and dry.
- **Firmware Update:** Check for updates via the EXFIT Manager App.
- **Use App/Device Controls:** If touch controls remain unreliable, use the EXFIT Manager App or your connected device's volume/playback controls.

6.5 Advanced Resets

- **Connect to Other Devices (after initial pairing):** To connect to a new device after initial pairing, place both earbuds in the case, then press and hold the right earbud's touch pad for 3 seconds until the case flashes. This puts them into pairing mode for a new device.
- **Total Factory Reset:** To perform a complete factory reset, place both earbuds in the charging case. Press and hold the right earbud's touch pad for 10 seconds. The case indicator light will flash green to confirm the reset. This will clear all pairing information.

7. SPECIFICATIONS

Feature	Specification
Model Name	T100 ANC
Connectivity Technology	Wireless (Bluetooth 5.2)
Bluetooth Range	Up to 10 meters (32.8 feet)
Noise Control	Hybrid Active Noise Cancellation, Ambient Mode
Control Type	Touch
Earbud Playtime (Single Charge)	Up to 8 hours
Total Playtime (with Charging Case)	Up to 24 hours
Charging Time	Approx. 3 hours (case + earbuds)
Water Resistance Level	IPX4 (Water Resistant)
Driver Type	8mm DCT Dynamic Driver
Earbud Battery Capacity	60mAh (each)
Charging Case Battery Capacity	410mAh
Item Weight	40.5 Grams (total product)
Product Dimensions	1.75 x 0.47 x 1.89 inches
Material	Plastic

8. WARRANTY AND SUPPORT

8.1 Warranty Information

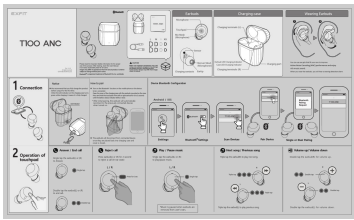
For detailed warranty information, please refer to the warranty card included in your product packaging or visit the official EXFIT website. Keep your proof of purchase for warranty claims.

8.2 Customer Support

If you require further assistance or have questions not covered in this manual, please utilize the EXFIT Manager App for firmware updates and advanced settings. For technical support or service inquiries, please refer to the contact information provided on the EXFIT official website or your purchase documentation.

© 2024 EXFIT. All rights reserved.

Documents - EXFIT – T100 ANC



[\[pdf\]](#) User Manual Guide

T100 ANC manual us 20220413 EXFIT Wireless Bluetooth Earbuds Active Noise Cancelling 5.2 IPX4 Waterproof in Ear Detection 6 Mics 24H Playtime Hi Fi Stereo Earphones for iPhone Android Black User Guide BLUECOM B09SYTN8KW B09SL184B9 D1Q8yeNhmcL m media amazon images I |||

T100 ANC T100 ANC 2022 Rev 1.0 US L M S XS Earbuds Microphone Touchpad Mic Mesh Microphone Sensor Charging case Charging terminals L Wearing Earbuds 1 2 1 Connection 2022 Rev 1.0 US Please read the Important Safety Information for the proper use of this product. After reading, stor...

lang:en score:39 filesize: 9.09 M page_count: 2 document date: 2022-04-13