

[Manuals.plus](#) /

› [KLARSTEIN](#) /

› Klarstein Electric Fireplace 1800W, Model FP6-Studio10ArcS W Instruction Manual

KLARSTEIN FP6-Studio10ArcS W

Klarstein Electric Fireplace 1800W

MODEL: FP6-STUDIO10ARCS W - INSTRUCTION MANUAL

Introduction

Thank you for choosing the Klarstein Electric Fireplace, Model FP6-Studio10ArcS W. This electric fireplace is designed to provide warmth and a realistic flame effect, enhancing the ambiance of your living space. It features an 1800W heating element, LED flame effects, a remote control, a programmable timer, and an adjustable thermostat for comfortable and convenient operation.

Please read this instruction manual thoroughly before installation, operation, or maintenance to ensure safe and efficient use of the appliance. Keep this manual for future reference.



NO FIRE OR SMOKE

Electric fireplace with 2 powerful heating levels



Image: The Klarstein Electric Fireplace, Model FP6-Studio10ArcS W, positioned in a contemporary living room, showcasing its design and flame effect.

Important Safety Instructions

When using electrical appliances, basic precautions should always be followed to reduce the risk of fire, electric shock, and injury to persons, including the following:

- Read all instructions before using this heater.
- This heater is hot when in use. To avoid burns, do not let bare skin touch hot surfaces. Keep combustible materials, such as furniture, pillows, bedding, papers, clothes, and curtains at least 1 meter (3 feet) from the front of the heater and keep them away from the sides and rear.
- Extreme caution is necessary when any heater is used by or near children or invalids and whenever the heater is left operating and unattended.
- Always unplug the heater when not in use.
- Do not operate any heater with a damaged cord or plug or after the heater malfunctions, has been dropped or damaged in any manner. Return heater to authorized service facility for examination, electrical or mechanical

adjustment, or repair.

- Do not use outdoors.
- Do not run cord under carpeting. Do not cover cord with throw rugs, runners, or similar coverings. Arrange cord away from traffic area and where it will not be tripped over.
- To disconnect heater, turn controls to off, then remove plug from outlet.
- Do not insert or allow foreign objects to enter any ventilation or exhaust opening as this may cause an electric shock or fire, or damage the heater.
- To prevent a possible fire, do not block air intakes or exhaust in any manner. Do not use on soft surfaces, like a bed, where openings may become blocked.
- A heater has hot and arcing or sparking parts inside. Do not use it in areas where gasoline, paint, or flammable vapors or liquids are used or stored.
- Use this heater only as described in this manual. Any other use not recommended by the manufacturer may cause fire, electric shock, or injury to persons.
- Always plug heaters directly into a wall outlet/receptacle. Never use with an extension cord or relocatable power tap (outlet/power strip).

Package Contents

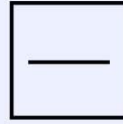
Carefully unpack all components and check for any damage. Ensure all items are present before discarding packaging materials.

- 1 x Klarstein Electric Fireplace (Model FP6-Studio10ArcS W)
- 1 x Remote Control
- 1 x Multilingual User Manual

Setup and Installation

The Klarstein Electric Fireplace is designed for freestanding installation. Follow these steps for proper setup:

1. **Unpacking:** Carefully remove the fireplace and all accessories from the packaging. Retain packaging for future transport or storage.
2. **Placement:** Choose a stable, level, and dry surface for the fireplace. Ensure there is adequate clearance from combustible materials (e.g., curtains, furniture) as specified in the safety instructions (at least 1 meter from the front, sides, and rear). Do not place the fireplace directly below a fixed socket outlet.
3. **Ventilation:** Ensure that the air inlets and outlets of the fireplace are not obstructed. Proper airflow is crucial for safe operation.
4. **Electrical Connection:** Plug the power cord into a suitable 220-240V~, 50/60Hz grounded electrical outlet. Ensure the outlet is easily accessible. Avoid using extension cords or power strips.
5. **Assembly:** The fireplace is largely pre-assembled for freestanding use. Any minor assembly steps, such as attaching decorative elements or the glass top, are detailed in the included assembly instructions.



DECORATIVE

With wooden compartment on the underside



MODERN DESIGN

With a glass shelf on the top

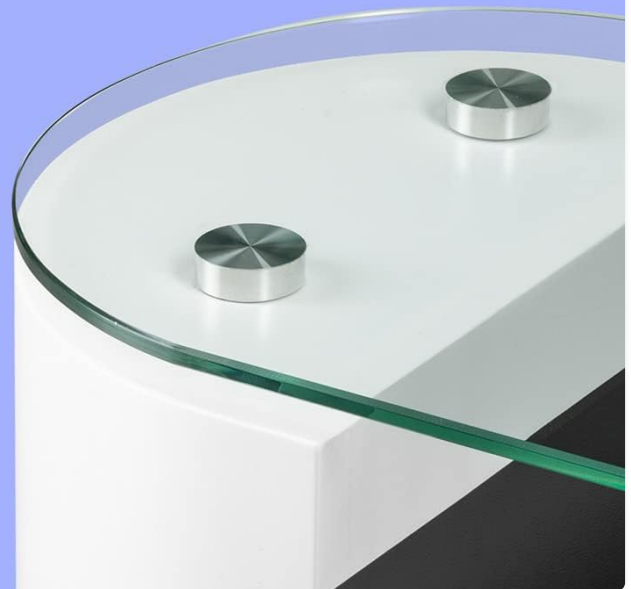
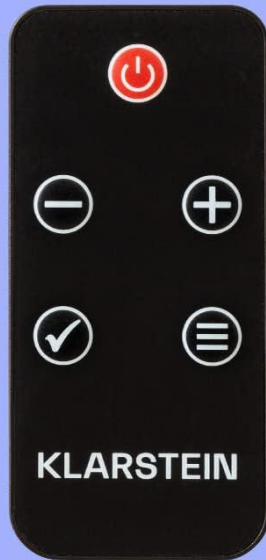


Image: A detailed view of the Klarstein Electric Fireplace, highlighting the integrated decorative wood compartment and the elegant glass shelf on top.

Operating Instructions

The fireplace can be operated using the control panel on the unit or the included remote control.



FROM A DISTANCE

Operation via
remote control



CLEAR

With display for
convenient operation



Image: The remote control and the integrated control panel of the Klarstein Electric Fireplace, showing buttons for power, temperature, and flame effects.

Control Panel and Remote Control Functions:

- **Power On/Off:** Press the power button to turn the unit on or off.
- **Flame Effect:** The fireplace features realistic LED flame effects. Use the dedicated flame button to cycle through different brightness levels or turn the flame effect on/off independently of the heating function.
- **Heating Function:** The unit has a 1800W heating output. Press the heat button to activate the heating. There are typically two heat settings (e.g., low and high) which can be selected.
- **Thermostat Control:** Use the temperature adjustment buttons (usually '+' and '-') to set your desired room temperature. The heater will automatically turn on or off to maintain the set temperature.
- **Timer Function:** Activate the timer function to set a specific operating duration (e.g., 30 minutes to 8 hours). The fireplace will automatically shut off once the timer expires.



ATMOSPHERIC

Flame effects and embers as well as adjustable brightness

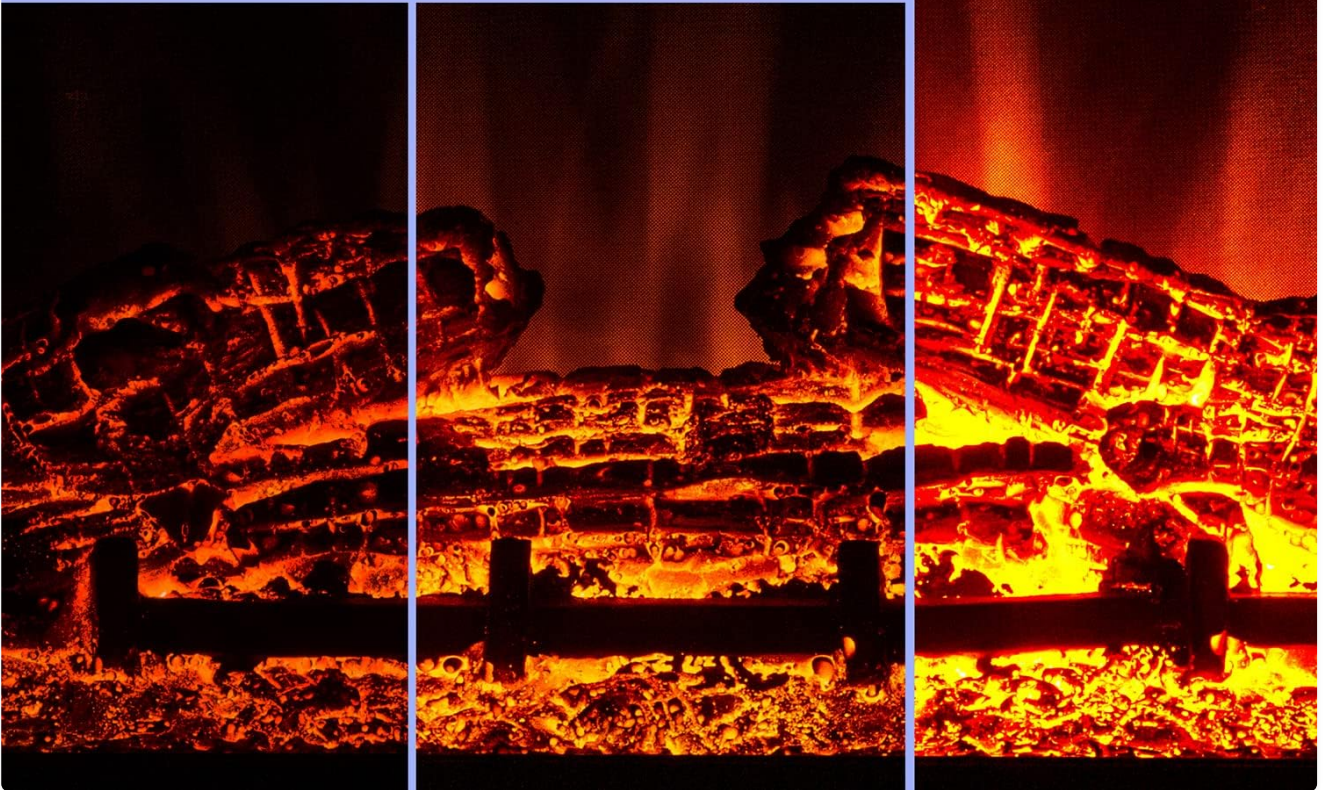


Image: A close-up view of the Klarstein Electric Fireplace's LED flame effect, showing the realistic flickering flames and glowing embers.

Care and Maintenance

Regular cleaning and proper care will ensure the longevity and optimal performance of your electric fireplace.

- **Always unplug the appliance** from the power outlet before cleaning or performing any maintenance.
- **Cleaning the Exterior:** Use a soft, damp cloth to wipe the exterior surfaces. Do not use abrasive cleaners, polishes, or chemical solvents, as these may damage the finish.
- **Cleaning the Glass:** For the glass panel, use a soft cloth and a non-abrasive glass cleaner. Spray the cleaner onto the cloth, not directly onto the glass, to prevent liquid from dripping into the unit.
- **Air Vents:** Periodically check and clean the air intake and exhaust vents to ensure they are free from dust and debris. Use a vacuum cleaner with a brush attachment if necessary.
- **Storage:** If storing the fireplace for an extended period, unplug it, clean it thoroughly, and store it in a dry, dust-free location, preferably in its original packaging.

Troubleshooting

If you encounter any issues with your Klarstein Electric Fireplace, refer to the following troubleshooting guide:

Problem	Possible Cause	Solution
Fireplace does not turn on.	No power supply, power switch off, or circuit breaker tripped.	Check if the unit is plugged in, ensure the power switch is on, and reset the circuit breaker if necessary. Test the outlet with another appliance.
No heat output.	Heating function not activated, thermostat set too low, or overheating protection activated.	Ensure the heating function is turned on. Increase the thermostat setting. If overheating protection is active, unplug the unit, wait 15-20 minutes, and plug it back in. Clear any obstructions from air vents.
Flame effect not working.	Flame effect turned off, or LED malfunction.	Ensure the flame effect button is pressed to activate it. If the issue persists, contact customer support.
Remote control not responding.	Dead batteries, remote out of range, or sensor obstructed.	Replace batteries in the remote control. Ensure you are within range and pointing the remote directly at the fireplace's sensor. Remove any obstructions between the remote and the unit.

If the problem persists after attempting these solutions, please contact Klarstein customer support.

Technical Specifications

The following table outlines the key technical specifications for the Klarstein Electric Fireplace, Model FP6-Studio10ArcS W:



Image: A diagram illustrating the dimensions of the Klarstein Electric Fireplace: 96 cm (width), 79 cm (height), and 26 cm (depth).

Feature	Specification
Model Number	FP6-Studio10ArcS W
Dimensions (L x H x P)	96 x 79 x 26 cm
Weight	20 kg
Heat Output	1800 Watts
Power Supply	220-240 V~ 50/60 Hz
Special Features	LED Flame Effect, Remote Control, Thermostat, Timer
Material	Wood (MDF)
Installation Type	Freestanding

Feature	Specification
Heating Coverage	Approximately 32 square feet

Warranty Information

This Klarstein Electric Fireplace comes with a limited warranty. Please refer to the warranty card included with your product or contact Klarstein customer support for specific details regarding warranty coverage, terms, and conditions.

It is recommended to retain your proof of purchase (receipt or invoice) as it will be required for any warranty claims.

Customer Support

Should you have any questions, require technical assistance, or need to report a problem with your Klarstein Electric Fireplace, please contact our customer support team.

For the most up-to-date contact information, please visit the official Klarstein website or refer to the contact details provided in your product packaging.