



[Manuals.plus](#) /

> [AWNLUX](#) /

> Awnlux Manual Modular Retractable RV Awning Instruction Manual

AWNLUX W5600CW-10x8WA2004

Awnlux Manual Modular Retractable RV Awning

Model: W5600CW-10x8WA2004

Brand: AAWNLUX

1. INTRODUCTION

The Awnlux Manual Modular Retractable RV Awning is designed to provide shade and protection for your RV, 5th wheel, travel trailer, toy hauler, or motorhome. This manual provides detailed instructions for the proper installation, operation, and maintenance of your awning to ensure its longevity and your satisfaction.

The awning features a high-quality 16oz vinyl fabric that is waterproof and offers 95% UV resistance, ensuring durability and comfort in various weather conditions. Its manual operation allows for quick extension and retraction without the need for electricity, simply by using the included pull strap.



Image: Awnlux RV Awning extended, providing shade for an RV parked in a natural setting.

2. SAFETY INFORMATION

Always follow the manufacturer's instructions for installation and operation to ensure safe use and handling of the awning. Pay close attention to all warnings and cautions throughout this manual.

- Ensure the RV is stable and level before installation or operation.
- Do not operate the awning in strong winds or heavy rain. Retract the awning immediately under such conditions to prevent damage.
- Keep hands and clothing clear of moving parts during extension and retraction.
- Do not hang objects from the awning arms or fabric.
- Regularly inspect the awning for any signs of wear, damage, or loose fasteners.
- When measuring and installing the awning arm, remember to avoid car doors, windows, and storage compartments.
- The spring lock on the fabric roller is pretensioned. Do not remove the safety clip until the awning is fully installed and secured.

3. SETUP AND INSTALLATION

This section guides you through the installation process. It is highly recommended to watch the detailed installation video provided by Awnlux for visual guidance.

3.1 Unpacking and Inspection

Upon receiving your awning, you will typically receive two boxes: one for the awning skeleton (frame components) and one for the awning fabric. It is crucial to wait until both boxes arrive before beginning installation.

Open the Awning Skeleton package and carefully check all parts and accessories against the packing list. Ensure nothing is missing. There will also be parts in a small carton within the box; verify its contents before discarding any packaging.



Image: Two Awnlux branded boxes, representing the separate shipments for the awning skeleton and fabric.

3.2 Required Tools

Gather the following tools before starting the installation:

- Electric hand drill
- Hand pliers
- Measuring tape
- Screwdriver
- Marking pencil/marker
- Utility knife
- Wrenches



Image: Essential tools for awning installation, including drills, measuring tape, and various hand tools.

3.3 Measuring and Marking

Before installation, ensure the front and rear of the vehicle body are at the same distance from the ground. Refer to the provided drawing in your manual for specific A, B, C, D points that need to be fixed on your caravan. These points may differ in height and width depending on your awning type. Carefully calculate and measure the correct installation positions.



We have a **professional after-sales** and **installation support team.**

If you find that the box is damaged or the parts are missing after receiving the product, you can contact us at any time. We can help you solve your problem as quickly as possible.

And it supports various video calls. We have professional engineers to help you solve various installation problems.

Please rest assured to buy our products.

Image: Two people using measuring tapes to mark precise locations on the RV for mounting the awning.

3.4 Installing Awning Arms and Fabric Lock Rail

Fix the upper C brackets with M6x50 self-tapping screws. Then, open the two awning arms and put them down. Fix the B bottom brackets with M6x45 self-tapping screws.

Install the Fabric lock rail with $\Phi 4.2 \times 32$ Self-tapping screws. The fabric lock rail is positioned between the two upper brackets, ensuring they are at the same height. Keep the distance between the Fabric lock rail and the upper bracket around 65mm.



NEW FUNCTION

Fabric roller notch and end cap are connected together, the fabric can be changed directly without disassembling the roller, which is more convenient and quicker than other awnings on the market.



AWNING SECURITY LOCK

The awning can be stopped at any time, and it will not be retracted directly unless you open the safety lock. And in a safe location, not easy for children to touch.



ARM SECURITY LOCK

When the awning is closed, the arm safety lock can protect the entire arm, you can safely drive the RV without worrying about the awning dispersing.



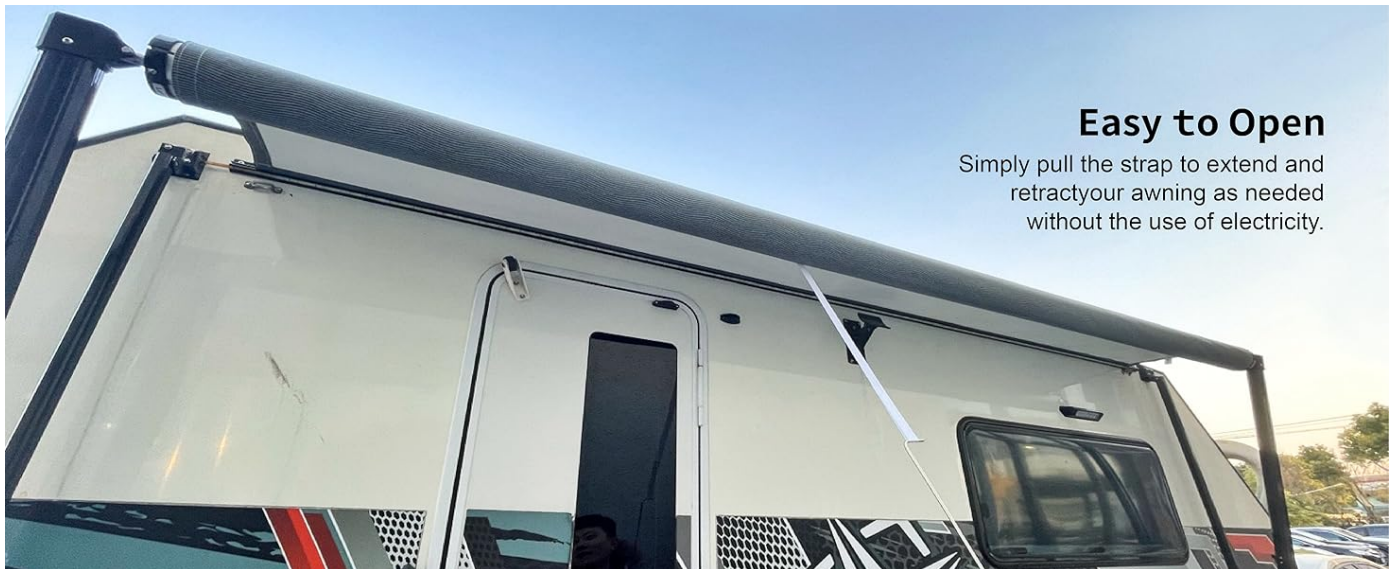
ARM ADJUST HANDLE

New arm adjust aluminum alloy handle, more convenient to adjust the arm height, durable.

Image: Installation of awning arms onto the RV, showing the use of a drill for securing brackets.

3.5 Assembling the Fabric Roller

Take out the roller connector from the tube (located in the left and right ends). Align the hole position and fix it with M6x16 screws. Our Fabric roller connector has a prompt line, which is convenient for you to find the hole position.



Easy to Open

Simply pull the strap to extend and retract your awning as needed without the use of electricity.

Image: Detailed view of connecting sections of the fabric roller tube with screws.

3.6 Attaching Fabric to Roller

Unpack the fabric. Put the fabric and the fabric roller parallel to the proper position. Find the spring lock of the right fabric roller, and determine the two fabric roller ports of A and B. Insert the fabric loop into the B port, then insert the grey polycord into the B port. Insert the fabric into the A port, use the pressing plate to press the fabric into the groove of the fabric roller, then insert the grey polycord into the A port.

If the polycord is difficult to insert into the groove of the fabric roller, you can use a knife to thin it, and then cut off the sharp edges on both sides, so that it can be installed without damaging the fabric.

Support LED Light Strip

Our fabric lock rail has two notches, the top is for inserting the fabric, the bottom is for inserting the LED light strip, you can insert the light strip according to your own needs to make your RV more shining at night. This product does not include light strips, the specific light strips need to be purchased by your own hobby.



Image: Attaching the awning fabric to the roller, showing the insertion of the polycord.

3.7 Mounting Fabric Roller to Arms

Roll up the fabric as directed in the video and place it on the trailer roof. Insert the top of the fabric into the fabric lock rail, then insert the black polycord into the fabric lock rail. Let the fabric be in the middle of the fabric lock rail.

Connect the awning left arm with the left fabric roller. Take out the screw on the left fabric roller, then align the hole, insert the screw to connect to the arming left arm. Follow the video operation, pay attention to safety. Repeat for the right arm. Make sure all screws are installed, then take out the R rings (safety clips).

Both fabric roller and fabric lock rail are spliced and installed, which is more stable to use.

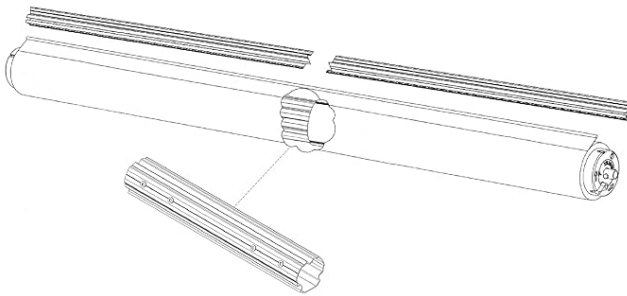


Image: Guiding the fabric roller into the top rail on the RV, ensuring proper alignment.

3.8 Final Installation Check

After completing all installation steps, perform a final check to ensure all components are securely fastened and the awning operates smoothly. The product is now installed and ready for use.

TWO USAGE SCENE MODES

SWITCH FREELY



The awning arm is fixed on the RV, and the triangle formed makes the awning particularly stable.



The awning arm is fixed on the grass or beach, which can increase the height of the awning, making it more convenient for you to use with other accessories.

Image: The Awnlux RV awning fully installed and extended, showcasing its appearance on the travel trailer.

3.9 Installation Video Guide

For a comprehensive visual guide, please refer to the official Awnlux installation video:

Video: Awnlux NPC Manual RV Awning Instruction Video. This video provides step-by-step instructions for the complete installation process of the awning.

4. OPERATING INSTRUCTIONS

The Awnlux Manual Modular Retractable RV Awning is designed for simple, non-electric operation.

4.1 Extending the Awning

1. Ensure the area around the awning is clear of obstructions.
2. Locate the pull strap attached to the awning fabric.
3. Gently pull the strap downwards and outwards to extend the awning. The arms will unfold as the fabric extends.
4. Continue extending until the awning is fully deployed or reaches your desired extension.
5. Adjust the distance of the fabric so that it is consistent up and down.

4.2 Retracting the Awning

1. Using the pull strap, gently guide the awning fabric back towards the RV.
2. As the fabric retracts, the arms will fold back against the RV.
3. Ensure the awning is fully closed, keeping the upper bracket and fabric lock rail flush.

The awning arms can be extended to suit your caravan's height. The minimum folded arm height is 1.75m. If your caravan is higher, please extend the arm to suit. Then lock the position with the set screw. If it is less than 1.45m, the arms can be cut down by removing the top cap on the arm and cutting to the required height.

Video: Awnlux Manual RV Awning Show. This video demonstrates the manual extension and retraction of the awning.

5. MAINTENANCE

Regular maintenance will extend the life of your Awnlux RV awning.

- **Cleaning:** Clean the awning fabric regularly with mild soap and water. Avoid harsh chemicals or abrasive cleaners that can damage the vinyl material. Rinse thoroughly and allow to dry completely before retracting.
- **Inspection:** Periodically inspect all moving parts, fasteners, and the fabric for any signs of wear, corrosion, or damage. Ensure all screws are tight.

- **Lubrication:** Lubricate moving parts of the arms and roller mechanism annually with a silicone-based lubricant to ensure smooth operation.
- **Storage:** When not in use for extended periods, ensure the awning is clean and dry before retracting it fully.

6. TROUBLESHOOTING

If you encounter issues with your awning, refer to the following common problems and solutions:

Problem	Possible Cause	Solution
Awning does not extend/retract smoothly.	Lack of lubrication, bent arms, or debris in the mechanism.	Lubricate moving parts. Inspect arms for damage and clear any debris.
Fabric is uneven when extended.	Fabric not properly aligned on the roller or in the lock rail.	Retract the awning fully and re-extend, ensuring the fabric is centered and evenly distributed. Adjust the distance of the fabric as per operating instructions.
Awning makes grinding noises.	Internal mechanism issue or lack of lubrication.	Apply lubricant to the roller ends. If the noise persists, contact customer support.
Awning arms are loose.	Loose mounting screws.	Tighten all mounting screws on the brackets.

7. SPECIFICATIONS

Feature	Specification
Brand	AWNLUX
Model	W5600CW-10x8WA2004
Size	10' (9'2" Fabric)
Color	White Frame-Ocean Blue
Material	Vinyl
Operation Mode	Manual
Projection Distance	10 Feet
Item Weight	1 pounds
Product Dimensions	72.44 x 12.6 x 9.45 inches

8. WARRANTY AND SUPPORT

AWNLUX products are designed for durability and performance. For specific warranty details, please refer to the warranty information included with your product packaging or contact AWNLUX customer service directly.

If you find that the box is damaged or parts are missing after receiving the product, you can contact AWNLUX at any time. They offer professional after-sales and installation support, including video calls with engineers to help solve various installation problems.

Return Policy: This product typically has a 30-day refund/replacement return policy. Please check your purchase details

for exact terms.

For further assistance, please visit the [AWNLUX Store on Amazon](#).